

INSTALLATION MANUAL

13482

Level of Difficulty

Moderate

Installation difficulty levels are based on time and effort involved and may vary depending on the installer level of expertise, condition of the vehicle and proper tools and equipment.

Weight Carrying Capacity

Gross trailer weight (GTW)	4,500 lbs.
Tongue weight (TW)	675 lbs.

Parts List

Item	Qty	Description
1	1	Trailer hitch

Tools Required

Torque wrench	Torx bit, T15
Socket, 7mm	Flathead screwdriver
Socket, 15mm	Wrench

⚠ WARNING

Never exceed the vehicle manufacturer's recommended towing capacity.

Product Photo



NOTICE

Before you begin installation, read all instructions thoroughly.

Proper tools will improve the quality of installation and reduce the time required.

This installation requires:

- Fascia removal

Periodic inspection of the trailer hitch should be performed to ensure all mounting hardware remains tight and structural components are secure.

To help prevent damage to the product or vehicle, refer to the specified torque specifications when securing hardware during the installation process.

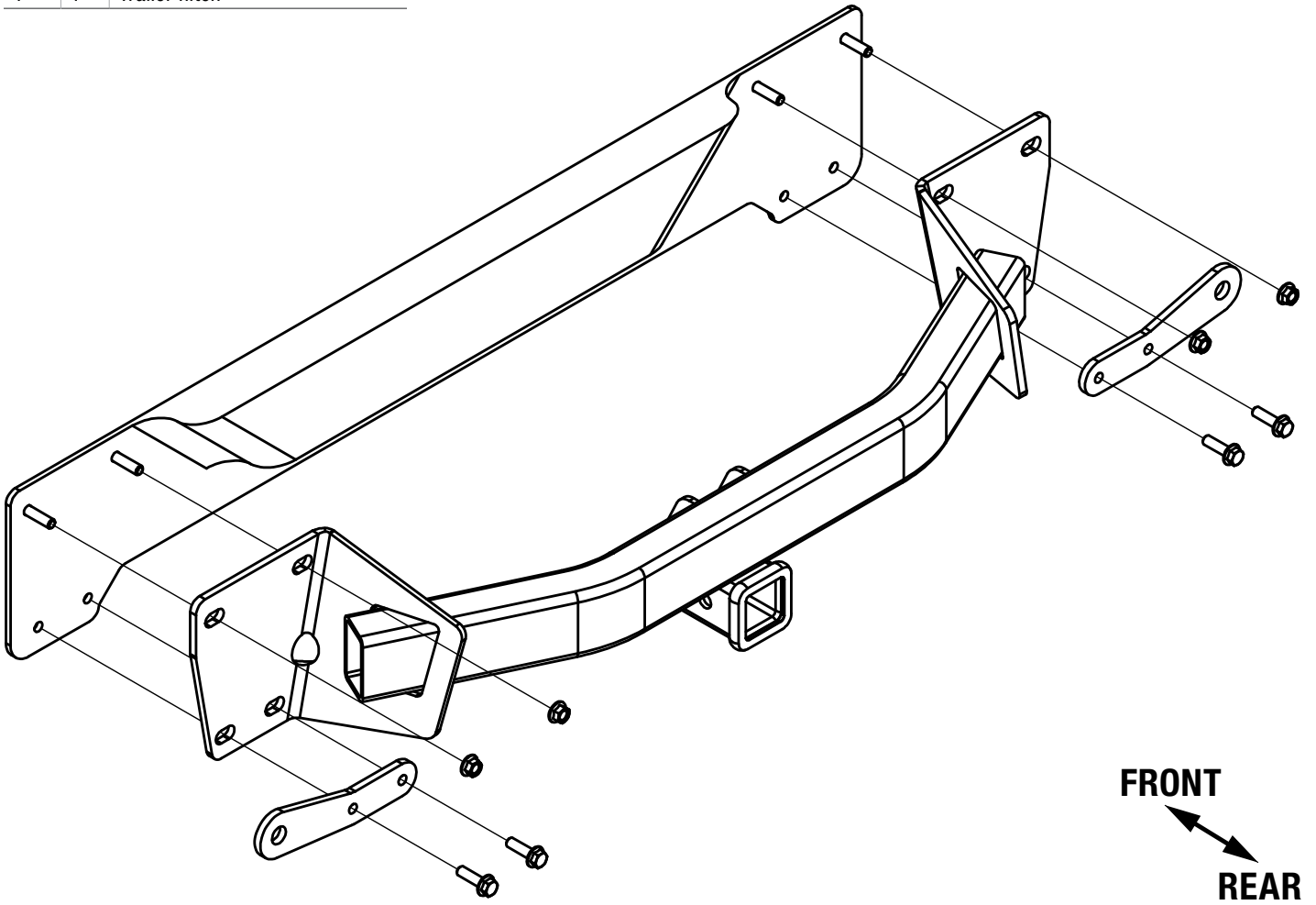
SAFETY INSTRUCTIONS

Safety glasses should be worn at all times while installing this product.

ASSEMBLY

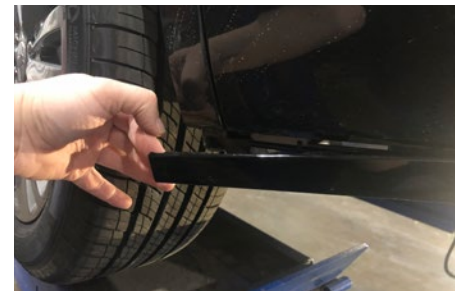
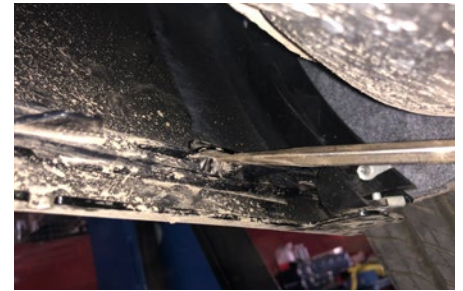
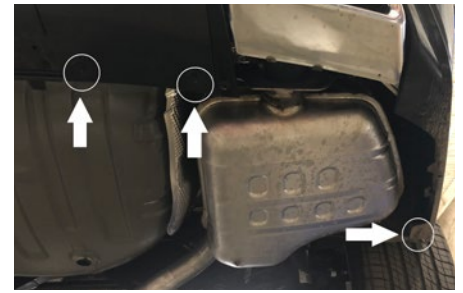
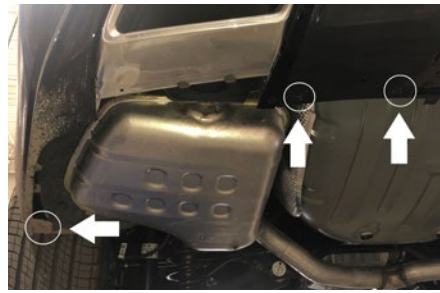
Parts List

Item	Qty	Description
1	1	Trailer hitch



Step 1

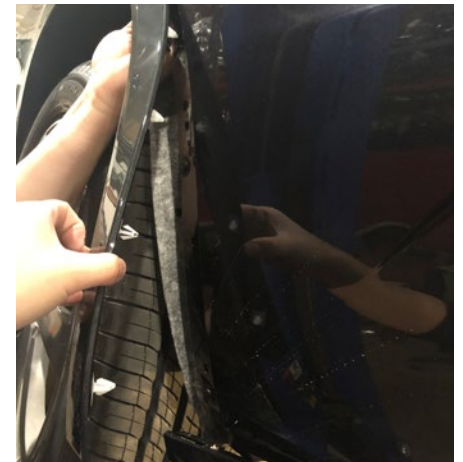
Open the vehicle trunk. Remove the six bolts from the bottom of the fascia with a 7mm socket. Use a flathead screwdriver to remove the plastic insert closest to the rear wheel (driver side shown) from inside of the fascia. Gently pull out the fascia lower mold.



Step 2

On both sides of the vehicle, remove three bolts with a T-15 Torx bit from the rear wheel trim and gently pull out the trim (driver side shown).

Note: Reach inside of the fascia, pinch and push out the white plastic fastener to avoid damage to the trim.



Step 3

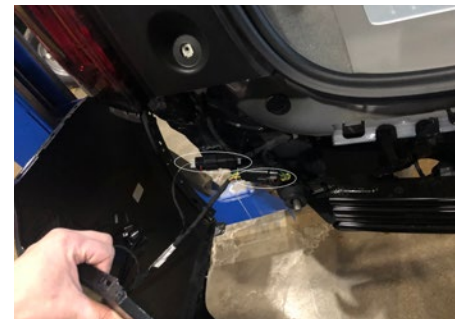
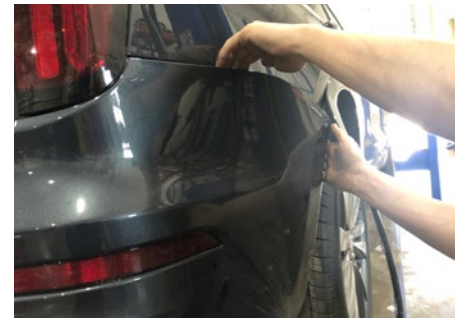
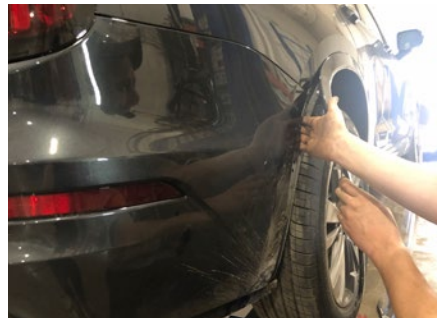
On both sides of the vehicle, pull out the rear wheel trim and remove three fasteners. Use a T-15 Torx bit for the bottom two and a 7mm Hex socket for the top one (driver side shown).



Step 4

From both sides of the vehicle, gently pull the fascia up from the rear wheel trim panel on each side of the vehicle, work up to the taillights and continue to remove the fascia along the bottom of the taillights to the bottom of the trunk.

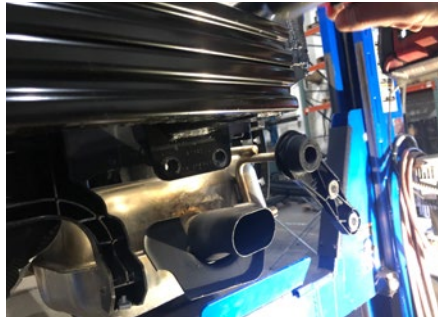
After the fascia is loose all around, slowly pull back the fascia and unplug the two rear bumper sensor harnesses on the driver side.



Step 5

Remove two flange nuts and two flange bolts on each side with a 15mm socket. Rotate the muffler hanger out of the way (passenger side shown) and remove the impact bar.

The hitch will be the replacement of the impact bar. Once removed, return the impact bar back to owner.



Step 6

Raise the hitch into the impact bar position and rotate the muffler hanger back into its original position. Secure the hitch using the fasteners removed in step 5.

Torque all four flange nuts and four flange bolts to 45 ft-lbs (61 Nm).



Step 7

Raise the fascia into position, plug in the sensor harness and reinstall the fascia.

To gain access to the hitch, use a T-15 Torx bit to remove the two fasteners from bottom of the fascia to remove the hitch cover.



Final Installed Image



TOWING BASICS & SAFETY INFORMATION

For information on safely towing your trailer, visit curtmfg.com/understanding-towing.