

# INSTALLATION MANUAL

# 13462

## Level of Difficulty

Moderate

Installation difficulty levels are based on time and effort involved and may vary depending on the installer level of expertise, condition of the vehicle and proper tools and equipment.

## Weight Carrying Capacity

Gross trailer weight (GTW)	4,000 lbs.
Tongue weight (TW)	400 lbs.

## Weight Distribution Capacity

Weight distribution (WD)	5,000 lbs.
WD tongue weight (WDTW)	500 lbs.

## Parts List

Item	Qty	Description
1	6	Carriage bolt, 1/2"-13 x 1-3/4", grade 8
2	6	Serrated-flange nut, 1/2"-13
3	4	Square-hole spacer, 1/4" x 1" x 2"
4	2	Square-hole spacer, 1/4" x 1" x 3"

## Tools Required

Ratchet	Fishwire, 1/2" (includes 6)
Socket, 8mm	Flathead screwdriver
Socket, 10mm	Tape measure
Socket, 19mm	Tin snips
Socket extension, 6"	Exhaust removal tool
Torque wrench	Safety glasses
Gloves	--

\* For a tools reference guide visit [curtmfg.com/trailer-hitch-installation](http://curtmfg.com/trailer-hitch-installation)

## ⚠ WARNING

Never exceed the vehicle manufacturer's recommended towing capacity.

## Product Photo



## NOTICE

Visit [www.curtmfg.com](http://www.curtmfg.com) for a full-color copy of this instruction manual, as well as helpful videos, guides and much more!

Before you begin installation, read all instructions thoroughly.

Proper tools will improve the quality of installation and reduce the time required.

If installing this hitch on a Hybrid model, 13466-SK (service kit) is required.

This installation requires:

- Lowering of the exhaust
- Trimming of the underbody panel
- Part removal

Periodic inspection of the trailer hitch should be performed to ensure all mounting hardware remains tight and structural components are secure.

To help prevent damage to the product or vehicle, refer to the specified torque specifications when securing hardware during the installation process.

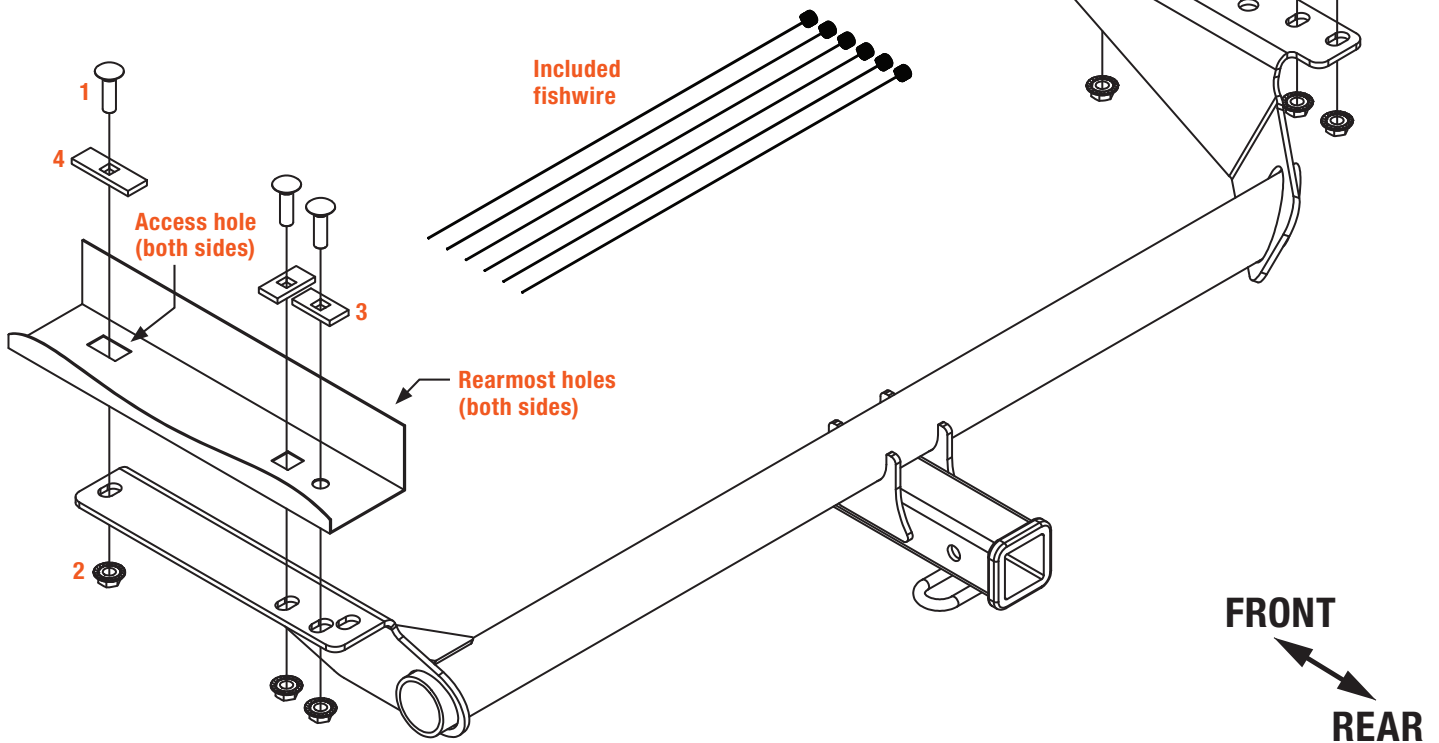
## SAFETY INSTRUCTIONS

Safety glasses should be worn at all times while installing this product.

# ASSEMBLY

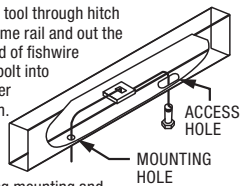
## Parts List

Item	Qty	Description
1	6	Carriage bolt, 1/2"-13 x 1-3/4", grade 8
2	6	Serrated-flange nut, 1/2"-13
3	4	Square-hole spacer, 1/4" x 1" x 2"
4	2	Square-hole spacer, 1/4" x 1" x 3"



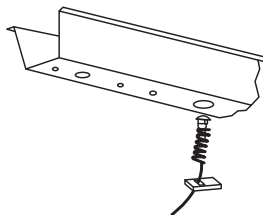
### FISHWIRE TECHNIQUE

Insert coiled end of fishwire tool through hitch mounting hole in vehicle frame rail and out the access hole. Pass coiled end of fishwire through spacer and thread bolt into coil. Kink wire to keep spacer separate from bolt as shown. Pull fishwire, spacer and bolt through frame and out mounting hole. Use fishwire to guide hitch during mounting and prevent loss of bolt or spacer inside frame rail.



### REVERSE PULL FISHWIRE TECHNIQUE

Attach the fishwire to the carriage bolt and slide the spacer onto the fishwire. Push the bolt through the hole followed by the spacer, as shown. Pull the bolt back into position, protruding from the frame.



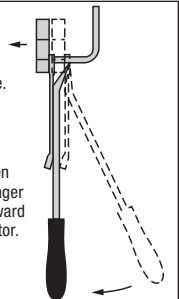
### RUBBER ISOLATOR REMOVAL DIAGRAM

This technique can be used if exhaust hanger removal pliers are not available.

Using a 5/8" open end wrench, slide the wrench up to the rubber isolator, cradling the hanger rod as shown.

Place the flat edge of a pry bar between the wrench and the hanger stop or hanger rod. Then simply rotate the pry bar toward the wrench to remove the rubber isolator.

**Note:** Using a lubricant or soapy water on the hanger rod and the rubber isolator helps removal.



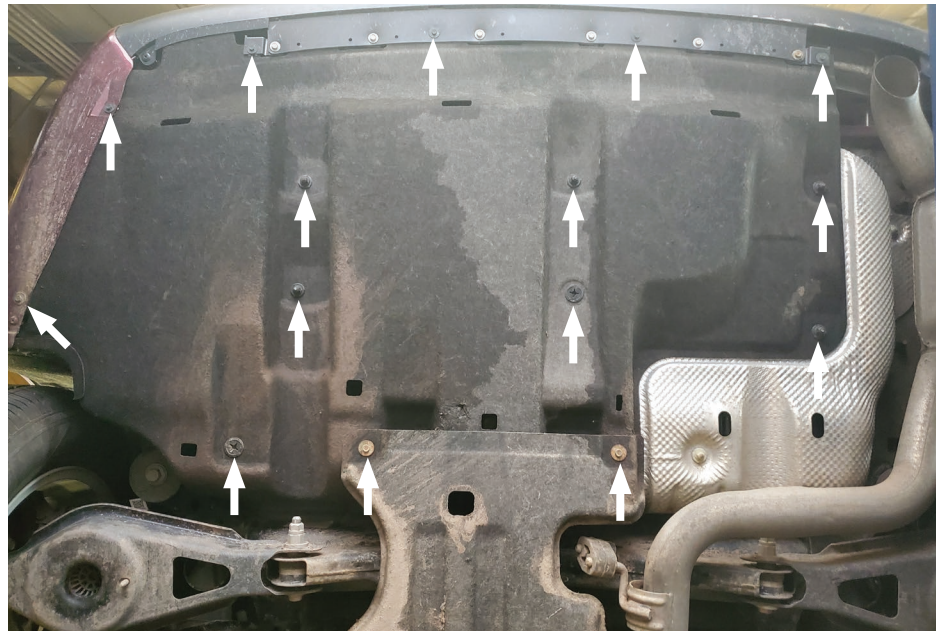
### Step 1

Remove the underbody panel by removing the following hardware:

- Nine M8 fasteners
- Two M10 fasteners
- Seven M10 nuts
- Two plastic push-on fasteners

Set the panel aside for reinstallation in Step 9.

**Note:** Remove the plastic push-on fasteners by pulling down on the panel while unscrewing them with a flathead screwdriver.



### Step 2

Lower the exhaust by removing the two rearmost exhaust hanger rods from the rubber isolator. Use a stand to support the exhaust and prevent any damage.

The exhaust will be reinstalled Step 8.

**Note:** Gently pull on the fascia to access the rearmost exhaust hanger rod.



### Step 3

Remove the heat shield by removing two M10 nuts. Set it aside for reinstallation in Step 8.

**Note:** One nut is located above the exhaust.



#### Step 4

Feed two carriage bolts (#1) and two 2" square-hole spacers (#3) through the access hole and into the two rearward holes using fishwires.

Leave the fishwire attached.

Repeat on the other side of the vehicle.

**Note:** Make sure the square-hole spacers are not overlapping.

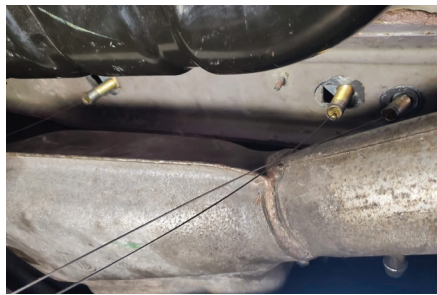


#### Step 5

Install a carriage bolt (#1) with a 3" square-hole spacer (#4) through the access hole using the reverse fishwire method and align the spacer with the access hole.

Leave fishwire attached.

Repeat on the other side of the vehicle.



#### Step 6

Raise the trailer hitch into position by sliding the passenger side of the hitch over the muffler first.

Feed the fishwires previously installed through the three holes in the hitch on both sides of the vehicle until all the carriage bolts (#1) are through the hitch holes.

Remove the six fishwires and loosely install the six serrated-flange nuts (#2).

Torque all 1/2" fasteners to 110 lb-ft.

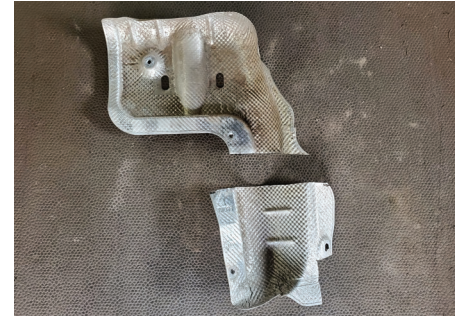
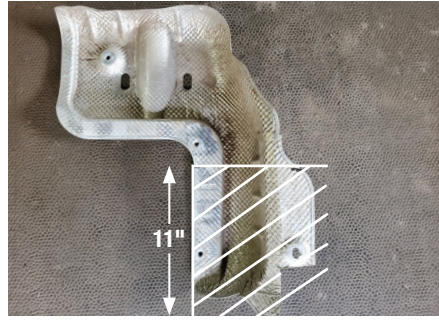


### Step 7

Trim the heat shield to the dimensions shown.

Reinstall the remaining portion of the heat shield with one of the two nuts removed in Step 3. Return the unused nut to the vehicle owner.

Reinstall the exhaust.

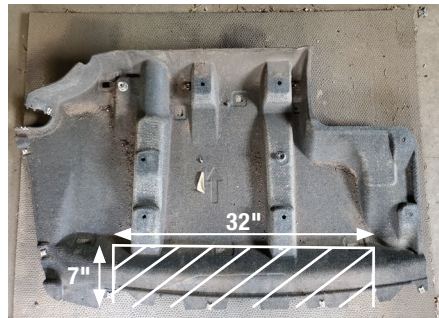


### Step 8

Trim the underbody panel to the dimensions shown. Reinstall the remaining portion of the heat shield with the following hardware removed in Step 1:

- Seven of the nine M8 fasteners
- Two M10 fasteners
- Seven M10 nuts
- Two plastic push-on fasteners

Return any unused fasteners to the vehicle owner.



### Final Installed Image

