

# INSTALLATION MANUAL

# 13458

## Level of Difficulty

Easy

Installation difficulty levels are based on time and effort involved and may vary depending on the installer level of expertise, condition of the vehicle and proper tools and equipment.

## Weight Carrying Capacity

Gross trailer weight (GTW)	5,000 lbs.
Tongue weight (TW)	750 lbs.

## Parts List

Item	Qty	Description
1	4	Carriage bolt, 1/2"-13 x 1-1/2", grade 8
2	4	Square-hole spacer, 1/4" x 1" x 3"
3	4	Serrated-flange nut, 1/2"-13
4	4	Fishwire, 1/2"
5	1	Flange bolt, M8-1.25 x 35mm, CL 10.9

## Tools Required

Ratchet	Socket, 13mm
Torque wrench	Socket, 3/4"
Socket extension, 6"	Aviation sheers
Safety glasses	--

## ⚠ WARNING

Never exceed the vehicle manufacturer's recommended towing capacity.

## Product Photo



## NOTICE

instruction manual, as well as helpful videos, guides and much more!

Before you begin installation, read all instructions thoroughly.

Proper tools will improve the quality of installation and reduce the time required.

This installation requires:

- Lowering of the exhaust
- Trimming the fascia, if applicable
- Fishwiring

Periodic inspection of the trailer hitch should be performed to ensure all mounting hardware remains tight and structural components are secure.

To help prevent damage to the product or vehicle, refer to the specified torque specifications when securing hardware during the installation process.

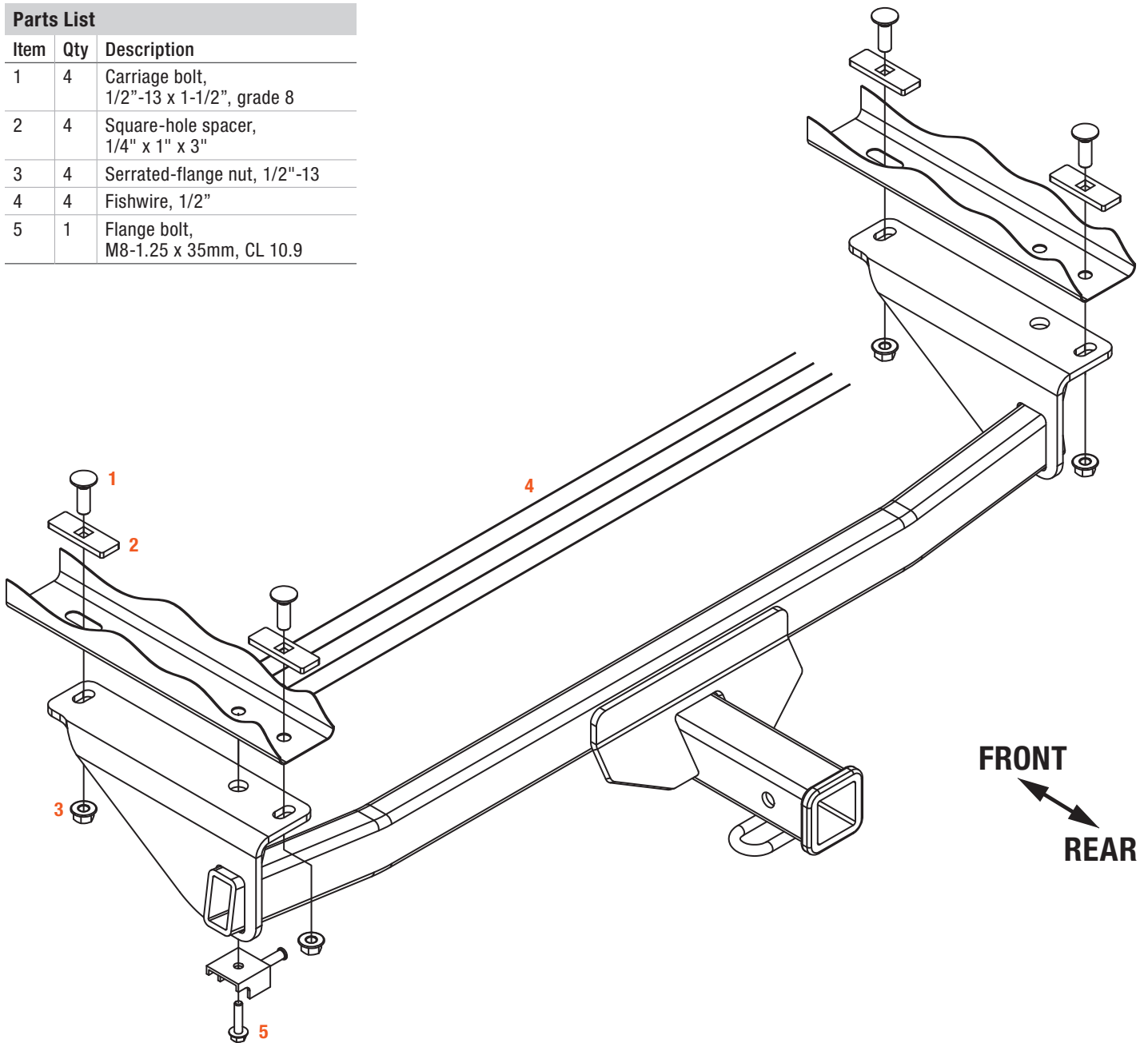
## SAFETY INSTRUCTIONS

Safety glasses should be worn at all times while installing this product.

# ASSEMBLY

## Parts List

Item	Qty	Description
1	4	Carriage bolt, 1/2"-13 x 1-1/2", grade 8
2	4	Square-hole spacer, 1/4" x 1" x 3"
3	4	Serrated-flange nut, 1/2"-13
4	4	Fishwire, 1/2"
5	1	Flange bolt, M8-1.25 x 35mm, CL 10.9



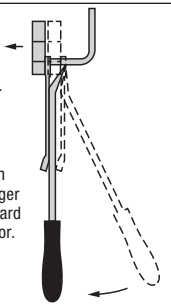
### RUBBER ISOLATOR REMOVAL DIAGRAM

This technique can be used if exhaust hanger removal pliers are not available.

Using a 5/8" open end wrench, slide the wrench up to the rubber isolator, cradling the hanger rod as shown.

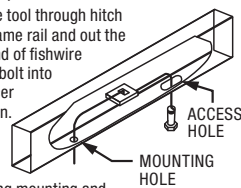
Place the flat edge of a pry bar between the wrench and the hanger stop or hanger rod. Then simply rotate the pry bar toward the wrench to remove the rubber isolator.

**Note:** Using a lubricant or soapy water on the hanger rod and the rubber isolator helps removal.



### FISHWIRE TECHNIQUE

Insert coiled end of fishwire tool through hitch mounting hole in vehicle frame rail and out the access hole. Pass coiled end of fishwire through spacer and thread bolt into coil. Kink wire to keep spacer separate from bolt as shown. Pull fishwire, spacer and bolt through frame and out mounting hole. Use fishwire to guide hitch during mounting and prevent loss of bolt or spacer inside frame rail.

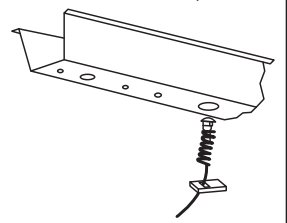


### REVERSE PULL FISHWIRE TECHNIQUE

Attach the fishwire to the carriage bolt and slide the spacer onto the fishwire.

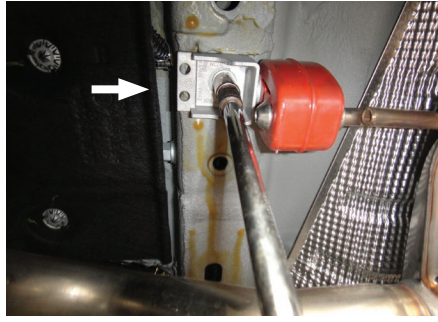
Push the bolt through the hole followed by the spacer, as shown.

Pull the bolt back into position, protruding from the frame.



### Step 1

Lower the exhaust by using a 13mm socket to remove exhaust hanger bolt on the bottom of the driver-side frame rail and removing the exhaust isolator on the passenger-side frame rail.



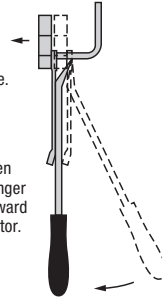
#### RUBBER ISOLATOR REMOVAL DIAGRAM

This technique can be used if exhaust hanger removal pliers are not available.

Using a 5/8" open end wrench, slide the wrench up to the rubber isolator, cradling the hanger rod as shown.

Place the flat edge of a pry bar between the wrench and the hanger stop or hanger rod. Then simply rotate the pry bar toward the wrench to remove the rubber isolator.

**Note:** Using a lubricant or soapy water on the hanger rod and the rubber isolator helps removal.



### Step 2

Fishwire two 1/2" carriage bolts (#1) and square-hole spacers (#2) into the rearward most holes in the frame rails.

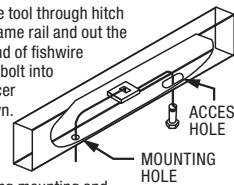
Reverse fishwire the remaining carriage bolts and spacers into the access holes.



#### FISHWIRE TECHNIQUE

Insert coiled end of fishwire tool through hitch mounting hole in vehicle frame rail and out the access hole. Pass coiled end of fishwire through spacer and thread bolt into coil. Kink wire to keep spacer separate from bolt as shown.

Pull fishwire, spacer and bolt through frame and out mounting hole. Use fishwire to guide hitch during mounting and prevent loss of bolt or spacer inside frame rail.

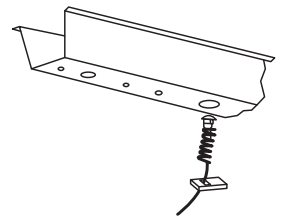


#### REVERSE PULL FISHWIRE TECHNIQUE

Attach the fishwire to the carriage bolt and slide the spacer onto the fishwire.

Push the bolt through the hole followed by the spacer, as shown.

Pull the bolt back into position, protruding from the frame.



### Step 3

Raise the trailer hitch into position and loosely secure with 1/2" serrated-flange nuts (#3).

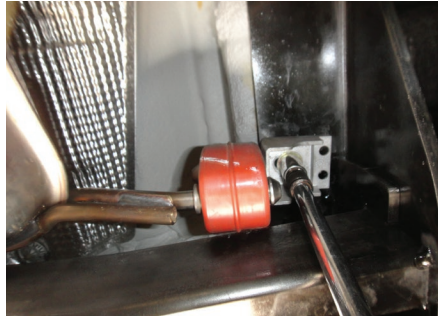
Torque all 1/2" fasteners to 110 lb-ft.

**Note:** The untextured portion of bumper cover may need to be trimmed near the receiver tube if the spacing is too tight.



#### Step 4

Reinstall the exhaust isolator and hanger using the provided M8 flange bolt (#5) and torque it to 23 lb-ft.



#### Final Installed Image

