



13410 INSTALLATION INSTRUCTIONS



Safety glasses should be worn at all times while installing this product.

YEARS: 2010-PRESENT

MAKE: SUBARU

MODEL: OUTBACK (EXCLUDING SPORT)

STYLE: WAGON



WARNING: NEVER EXCEED YOUR VEHICLE MANUFACTURER'S RECOMMENDED TOWING CAPACITY

WEIGHT CARRYING:

TRAILER WEIGHT: 4,000 LBS.
TONGUE WEIGHT: 600 LBS.

PRO INSTALL TIME: **45 MIN.**

NOVICE INSTALL TIME: **90 MIN.**

IF YOU ARE HESITANT TO UNDERTAKE THIS TASK ON YOUR OWN, CONTACT AN AUTHORIZED CURT INSTALLER FOR ADDITIONAL ASSISTANCE.


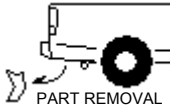

INSTALLATION REQUIRES:

 RATCHET	 10mm 14mm SOCKET	 TORQUE WRENCH
 AVIATION SHEARS	 MASKING TAPE	 TAPE MEASURE
 SCREW DRIVERS	 SAFETY GLASSES	

INSTALLATION TIPS:

1. BEFORE YOU BEGIN INSTALLATION, READ ALL INSTRUCTIONS THOROUGHLY.
2. TO EASE INSTALLATION, 2 PEOPLE MAY BE REQUIRED.
3. USING PROPER TOOLS WILL GREATLY IMPROVE THE QUALITY OF THE INSTALL AND REDUCE THE TIME REQUIRED.

LEVEL OF DIFFICULTY: MODERATE

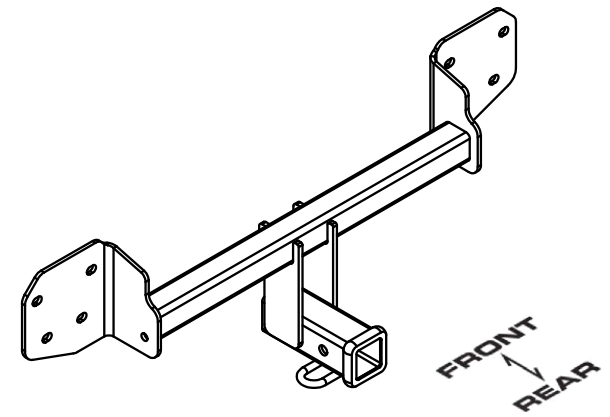
EASY	MODERATE	CHALLENGING
	NO DRILLING REQUIRED	
	BUMPER AND TAIL LIGHT REMOVAL REQUIRED	
	TRIMMING REQUIRED	

VEHICLE PHOTO:



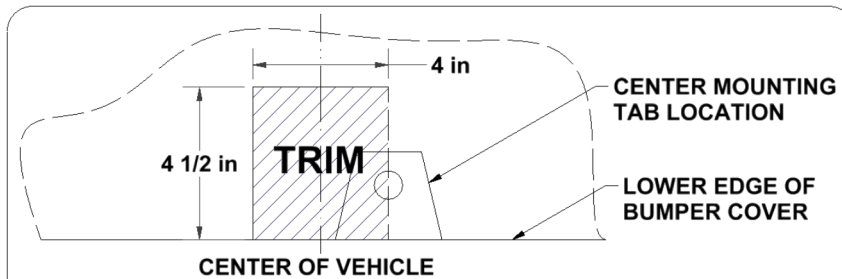
REPRESENTATIVE PHOTO

HITCH ILLUSTRATION:

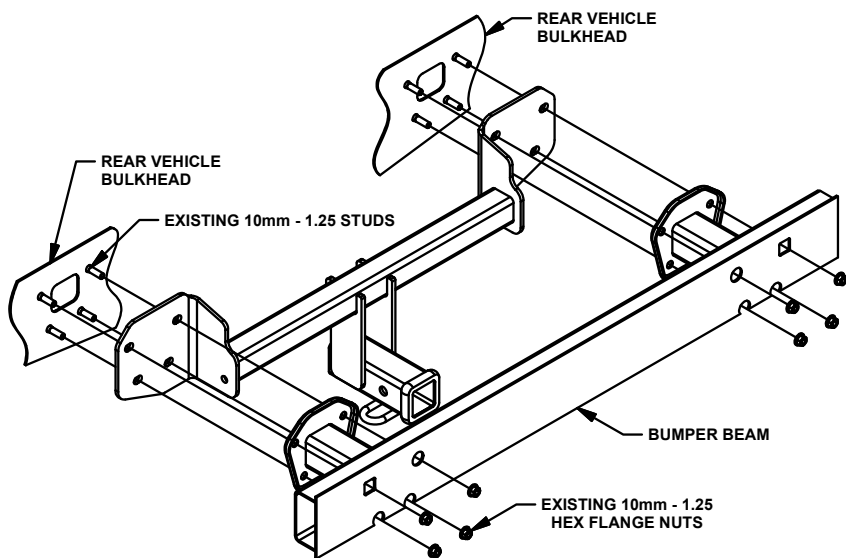


MAKE SURE YOUR HITCH MATCHES

INSTALLATION WALKTHROUGH:

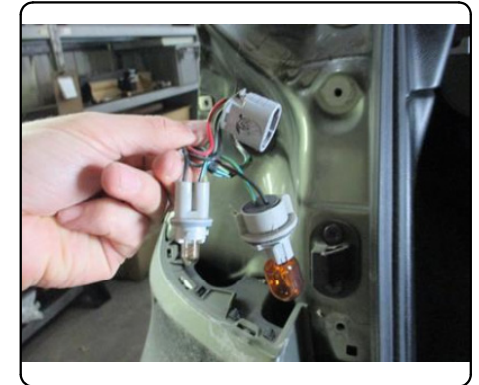


BUMPER COVER TRIM DIAGRAM
REFERENCE ONLY - MEASURE BEFORE CUTTING



FRONT
↓
REAR

1. Remove the tail light plastic push fasteners with a straight and phillips screw driver and the (2) screws with a 10mm socket.
2. Pull each tailight rearward and unhook the wiring connector to remove the lens.

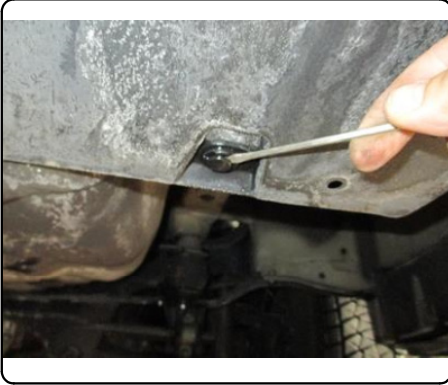


- ↓
3. Using a screw driver, remove the (3) push fasteners in the rear wheel wells holding the bumper cover. If mud flaps are present, remove the (3) screws holding on each side as well.



INSTALLATION WALKTHROUGH:

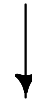
4. Remove the (7) push fasteners along the edge of the bumper cover with a straight screwdriver. When removed, work from one side and gently pull the bumper cover away from the vehicle.



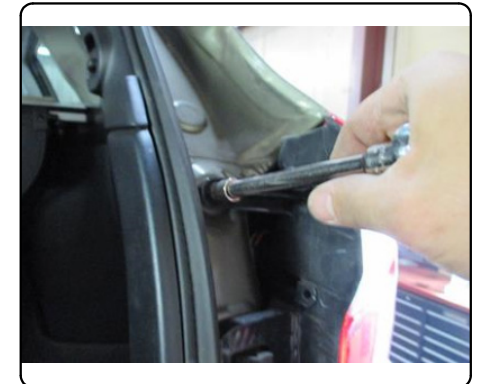
5. Remove the foam from the bumper beam to access the bumper beam bolts. Remove the (8) bumper beam bolts with a 14mm socket and remove the bumper beam.



6. Fold the center bumper cover mounting tab flat against the rear bulkhead of the vehicle. Raise the hitch and bumper beam back into position on the studs, center and loosely reinstall the nuts removed in step 5.



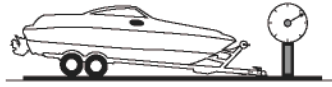
8. Reinstall bumper beam foam and trim the bumper cover as shown in the Bumper Cover Trim diagram on page 2.
9. Reinstall the bumper cover, mud flaps (if present) and tail lights.



TOWING SAFETY INFORMATION

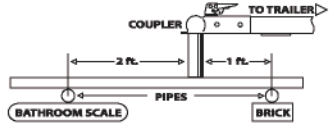
Gross Trailer Weight / GTW

The Gross Trailer Weight is the weight of the trailer & cargo. Measure this by putting the fully loaded trailer on a vehicle scale.



Tongue Weight / TW

The downward force that is exerted on the hitch ball by the coupler. The tongue weight will vary depending on where the load is positioned in relationship to the trailer axle(s). To measure the tongue weight, use either a commercial scale or a bathroom scale with the coupler at towing height. When using a bathroom scale with heavier tongue weights, use the method shown and multiply the scale reading by 3.



Weight Carrying / WC

The total weight of both the trailer and the cargo inside. Never exceed the weight capacity of your trailer hitch.

Weight Distribution / WD

Used to balance the weight of the cargo between the front and rear wheels throughout the trailer, allowing for better steering, braking, and level riding.



Sway Control

A device used to reduce the lateral movements of the trailer that are caused by the wind. This works in conjunction with a weight distribution hitch. Do not use this on a class 1 or 2 hitch, or with surge brakes.

How Much Can You Safely Tow?

TONGUE WEIGHT lbs	1000	2000	3000	4000	5000	6000	7000	8000	10,000	12,000
Tongue weight should be about 10 to 15 percent of the gross trailer weight.										
CLASS 1										
CLASS 2										
CLASS 3										
CLASS 4										
CLASS 5										
TRAILER TYPE										
Camper	11'	12'	13'	14'	15'	16'				
lbs	1100	1200	1300	1400	1500	1600				
Vacation	14'	16'	18'	20'	22'	24'	26'	28'	30'	32'
lbs	2100	2400	2700	3000	3300	3600	3900	4200	4500	4800
Vacation	14'	16'	18'	20'	22'	24'	26'	28'	30'	32'
lbs	2800	3200	3600	4000	4400	4800	5200	5600	6000	6400
5th Wheel										

Refer to owner's manual for towing capabilities and limitations.

Ball Mount

The ball mount is placed inside the opening of the receiver hitch which is mounted to the vehicle. Make sure a hitch pin and clip is properly securing the ball mount to the receiver hitch before you begin towing.

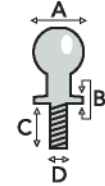
- A: Rise. B: Drop. C: Hole Size. D: Length.



Trailer Ball

The connection from the hitch to the trailer. There are many factors that determine the correct hitch ball:

- Number one is the hitch ball's gross trailer weight rating.
- The mounting platform must be at least 3/8" thick.
- The hole diameter must not be more than 1/16" larger than the threaded shank.
- Every time you tow, check the nut and lock washer to make sure they are fastened securely.
- A: Ball Dia. B: Shank Dia. C: Shank Length. D: Shank Rise.



Coupler

The component that is placed over the trailer ball to connect the vehicle to the trailer. Be sure that the coupler size matches the size of the hitch ball and that the coupler handle is securely fastened. To determine what size hitch ball you need for your application you will need to know the size of coupler that is on the trailer. Be sure your coupler is properly adjusted to the ball you are using.

NOTE: For added security the use of safety devices such as Coupler Safety Pins and Locks is strongly recommended.

Safety Chains

Safety chains are a requirement and should be crossed under the tongue of the trailer so that the tongue will not drop to the road if it becomes separated from the hitch. Always leave enough slack so you can turn. Never allow the safety chains to drag on the ground and never attach the chains to the bumper.

Trailer Classification: Safety Chain Breaking Force - Minimum

Class 1: 2,000 lbs. (8.9 kN)

Class 2: 3,500 lbs. (15.6 kN)

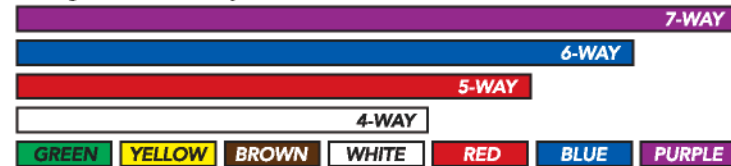
Class 3: 5,000 lbs. (22.2 kN)

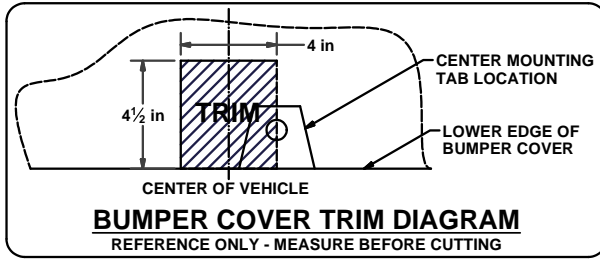
The strength rating of each length of safety chain or its equivalent and its attachments shall be equal to or exceed in minimum breaking force the GVWR (Gross Vehicle Weight Rating) of the trailer.

Electrical

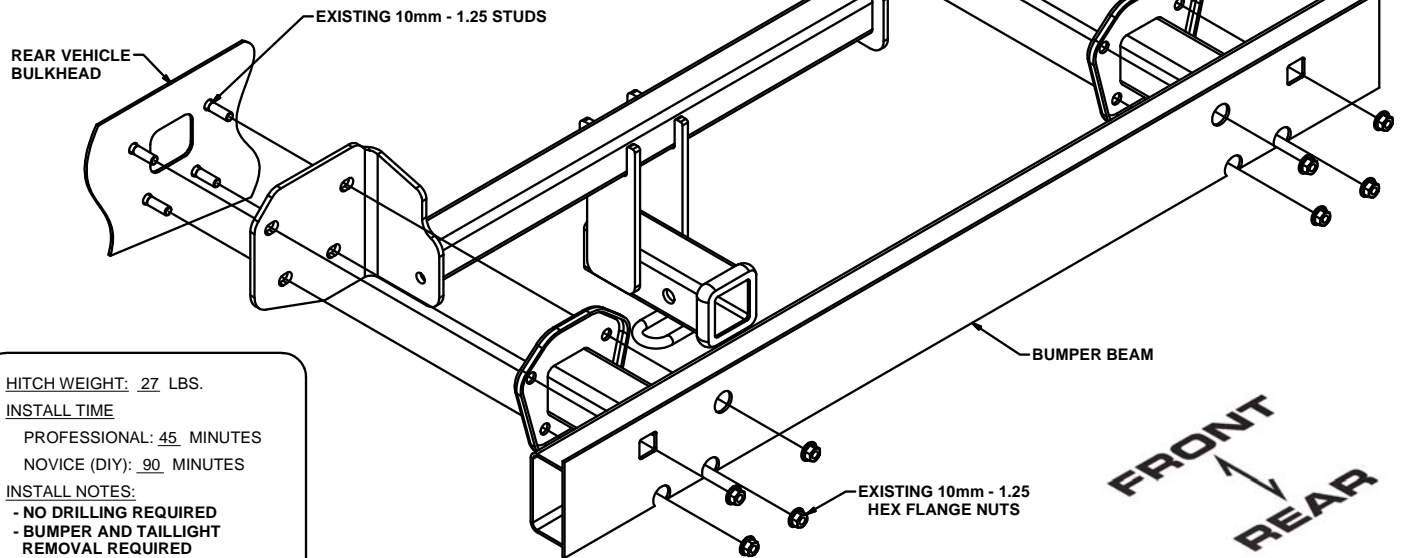
Trailer lights, Electric Brakes, Break-away systems - Every time you tow, be sure to check that all components are working properly.

Wiring identification by color:



13410**SUBARU OUTBACK (EXCLUDING SPORT)****GROSS LOAD CAPACITY WHEN USED AS A WEIGHT CARRYING HITCH: 4,000 LBS. TRAILER WEIGHT & 600 LBS. TONGUE WEIGHT.****WARNING: *** DO NOT EXCEED VEHICLE MANUFACTURER'S RECOMMENDED TOWING CAPACITY *****

TOOLS REQUIRED	
	RATCHET
	10mm & 14mm SOCKETS
	TORQUE WRENCH
	AVIATION SHEARS
	MASKING TAPE
	TAPE MEASURE
	+ & - SCREW DRIVERS
	SAFETY GLASSES

**HITCH WEIGHT: 27 LBS.****INSTALL TIME**

PROFESSIONAL: 45 MINUTES

NOVICE (DIY): 90 MINUTES

INSTALL NOTES:

- NO DRILLING REQUIRED
- BUMPER AND TAILLIGHT REMOVAL REQUIRED
- TRIMMING REQUIRED

INSTALLATION STEPS

1. Remove the tail light plastic push fasteners with a straight and phillips screw driver and the (2) screws with a 10mm socket.
2. Pull each tail light rearward and unhook the wiring connector to remove the lens.
3. Using a screw driver, remove the (3) push fasteners in the rear wheel wells holding the bumper cover. If mud flaps are present, remove the (3) screws holding on each side as well.
4. Remove the (7) push fasteners along the edge of the bumper cover with a straight screwdriver. When removed, work from one side and gently pull the bumper cover away from the vehicle.
5. Remove the foam from the bumper beam to access the bumper beam bolts. Remove the (8) bumper beam bolts with a 14mm socket and remove the bumper beam.
6. Fold the center bumper cover mounting tab flat against the rear bulkhead of the vehicle. Raise the hitch and bumper beam back into position on the studs, center and loosely reinstall the nuts removed in step 5.
7. Torque all 10mm fasteners to 42 lb-ft.
8. Reinstall bumper beam foam and trim the bumper cover as shown in the Bumper Cover Trim diagram above.
9. Reinstall the bumper cover, mud flaps (if present) and tail lights.

PERIODICALLY CHECK THIS RECEIVER HITCH TO ENSURE THAT ALL FASTENERS ARE TIGHT AND THAT ALL STRUCTURAL COMPONENTS ARE SOUND.