

YEARS: 2017-PRESENT

MAKE: HONDA

MODEL: CIVIC

STYLE: HATCHBACK

WARNING: NEVER EXCEED YOUR VEHICLE MANUFACTURER'S RECOMMENDED TOWING CAPACITY

WEIGHT CARRYING:
 TRAILER WEIGHT: 2,000 LBS.
 TONGUE WEIGHT: 200 LBS.

PRO INSTALL TIME: 30 MIN.
NOVICE INSTALL TIME: 60 MIN.

IF YOU ARE HESITANT TO UNDERTAKE THIS TASK ON YOUR OWN, CONTACT AN AUTHORIZED CURT INSTALLER FOR ADDITIONAL ASSISTANCE.

INSTALLATION REQUIRES:

RATCHET	TORQUE WRENCH	6" SOCKET EXTENSION
10mm 11/16" SOCKET	POWER DRILL	DRILL BIT 1/4", STEP
DIE GRINDER	AVIATION SHEARS	SAFETY GLASSES
SCREW DRIVER	MASKING TAPE	

INSTALLATION TIPS:

- BEFORE YOU BEGIN INSTALLATION, READ ALL INSTRUCTIONS THOROUGHLY.
- TO EASE INSTALLATION, 2 PEOPLE MAY BE REQUIRED.
- USING PROPER TOOLS WILL GREATLY IMPROVE THE QUALITY OF THE INSTALL AND REDUCE THE TIME REQUIRED.

LEVEL OF DIFFICULTY: MODERATE

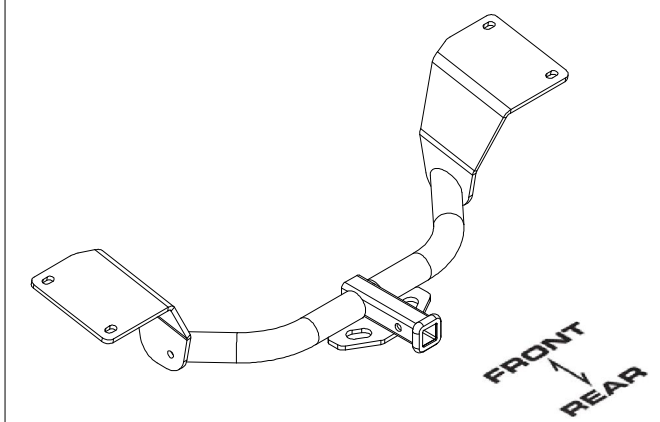
EASY	MODERATE	CHALLENGING
	DRILLING REQUIRED	
	HOLE ENLARGEMENT REQUIRED	
	TRIMMING HEAT SHIELD(S) REQUIRED	
	TEMPORARILY REMOVE HEAT SHIELD(S)	
	FISHWIRE (4) BOLTS	

VEHICLE PHOTO:



REPRESENTATIVE PHOTO

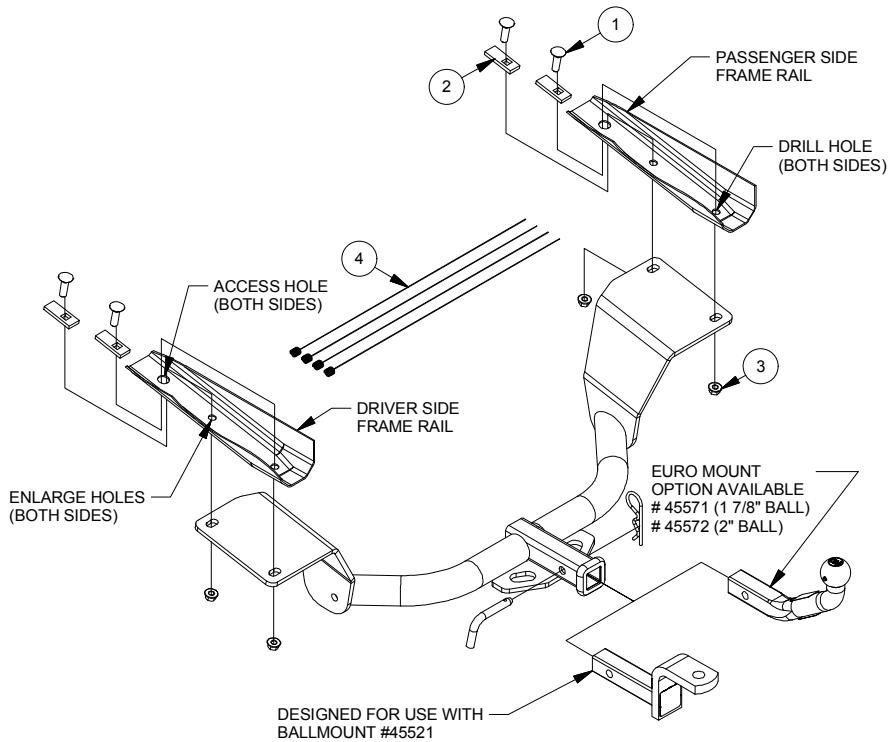
HITCH ILLUSTRATION:



MAKE SURE YOUR HITCH MATCHES

INSTALLATION WALKTHROUGH:

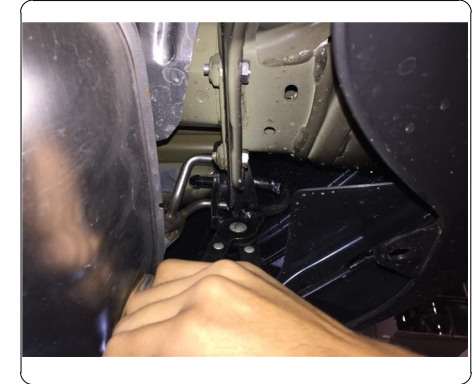
Parts List			
ITEM	QTY	PART NUMBER	DESCRIPTION
1	4	7/16-14 x 1 1/2	CARRIAGE BOLT
2	4	CM-SP2	.250 x .88 x 2.25" SQUARE HOLE SPACER
3	4	7/16-14	HEX FLANGE NUT
4	4	7_16 FISHWIRE	7/16" FISHWIRE



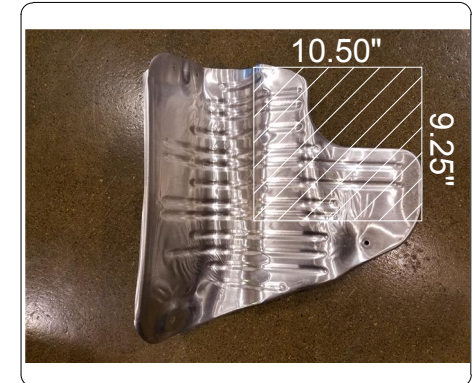
DESIGNED FOR USE WITH BALLMOUNT #45521

FRONT
↑
REAR

1. Remove (3) plastic push pins from the fascia using a screwdriver. Locate and remove (4) rubber isolators to lower exhaust. **NOTE:** To ease installation, locate and remove the plastic exhaust bracket behind the wheel and fascia - set aside for reinstallation.

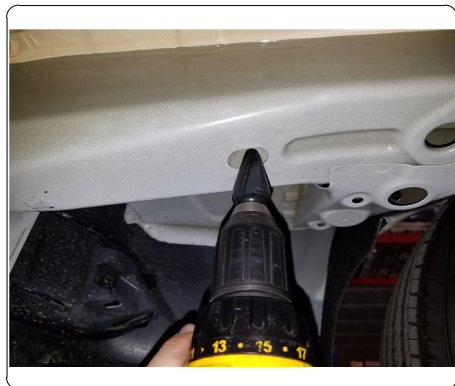


2. Locate and remove (3) bolts with a 10mm socket to remove the heat shield. Mark out a 9.25" x 10.50" section using masking tape and trim heat shield. Reinstall heat shield.

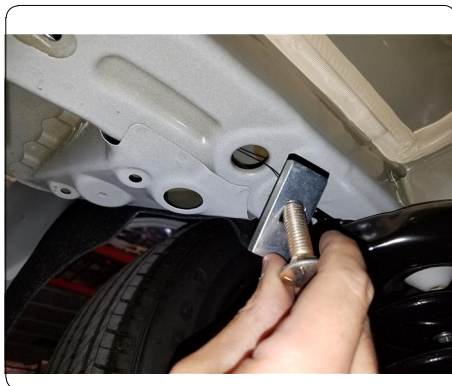


INSTALLATION WALKTHROUGH:

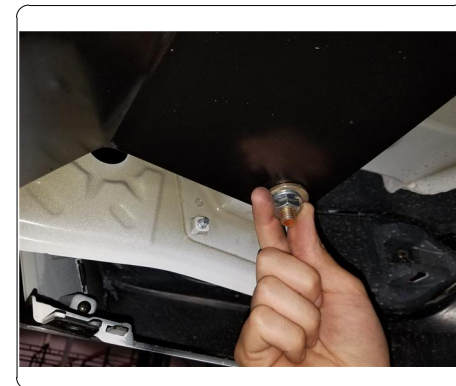
3. Raise hitch into position using forward most holes to line up existing holes on frame to mark out (2) rear most holes. Use hitch as a template to drill the (2) rear most holes with a 1/4" bit. Lower hitch and use a 1/4" step drill bit to enlarge (4) holes to 1/2" in diameter.



4. Fishwire (2) 7/16" carriage bolts and (2) CM-SP2 spacers through access hole, located towards the front of each frame rail.



5. Raise hitch into position and loosely fasten (2) conical tooth washers and (2) 7/16" hex flange nuts on each side using 11/16" socket.



6. Torque all 7/16" hardware to 59 ft-lbs. Reinstall exhaust following Step 1 in reverse order.



11463

HONDA CIVIC (HATCHBACK)

GROSS LOAD CAPACITY WHEN USED AS A WEIGHT CARRYING HITCH: 2,000 LBS. TRAILER WEIGHT & 200 LBS. TONGUE WEIGHT.

WARNING: ALL NON-TRAILER LOADS APPLIED TO THIS PRODUCT MUST BE SUPPORTED BY 18050 STABILIZING STRAPS.

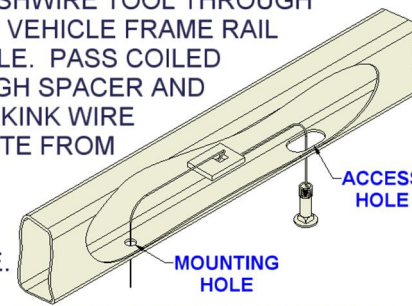
**WARNING: ** FAILURE TO PROPERLY SUPPORT NON-TRAILER LOADS WILL VOID PRODUCT WARRANTY ******WARNING: *** DO NOT EXCEED VEHICLE MANUFACTURER'S RECOMMENDED TOWING CAPACITY *****

Parts List			
ITEM	QTY	PART NUMBER	DESCRIPTION
1	4	7/16-14 x 1 1/2	CARRIAGE BOLT
2	4	CM-SP2	.250 x .88 x 2.25" SQUARE HOLE SPACER
3	4	7/16-14	HEX FLANGE NUT
4	4	7_16 FISHWIRE	7/16" FISHWIRE

FISHWIRE TECHNIQUE

INSERT COILED END OF FISHWIRE TOOL THROUGH HITCH MOUNTING HOLE IN VEHICLE FRAME RAIL AND OUT THE ACCESS HOLE. PASS COILED END OF FISHWIRE THROUGH SPACER AND THREAD BOLT INTO COIL. KINK WIRE TO KEEP SPACER SEPARATE FROM BOLT AS SHOWN. PULL FISHWIRE, SPACER, AND BOLT THROUGH FRAME AND OUT MOUNTING HOLE. USE FISHWIRE TO GUIDE HITCH DURING MOUNTING AND PREVENT LOSS OF BOLT / SPACER INSIDE FRAME RAIL.

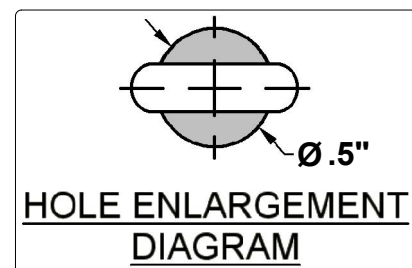
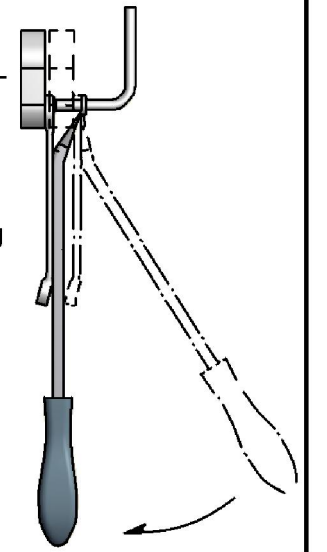
NOTE: SOME VEHICLES MAY FISHWIRE THROUGH END OF FRAME

**RUBBER ISOLATOR REMOVAL DIAGRAM**

This technique can be used if an Exhaust Hanger Removal Pliers is not available.

Using a 5/8" open end wrench, slide the wrench up to the rubber isolator, cradling the hanger rod as shown. Next place the flat edge of a pry bar between the wrench and the hanger stop or hanger rod. Then simply rotate the pry bar toward the wrench to remove the rubber isolator.

Note: Using a spray lubricant or soapy water on the hanger rod and the rubber isolator helps removal.



HOLE ENLARGEMENT DIAGRAM



TOOLS REQUIRED
RATCHET
TORQUE WRENCH
6" SOCKET EXTENSION
10mm, 11/16" SOCKET
POWER DRILL
1/4" STEP DRILL BIT
DIE GRINDER
AVIATION SHEARS
SAFETY GLASSES
SCREWDRIVER
MASKING TAPE

HITCH WEIGHT: 25 LBS.

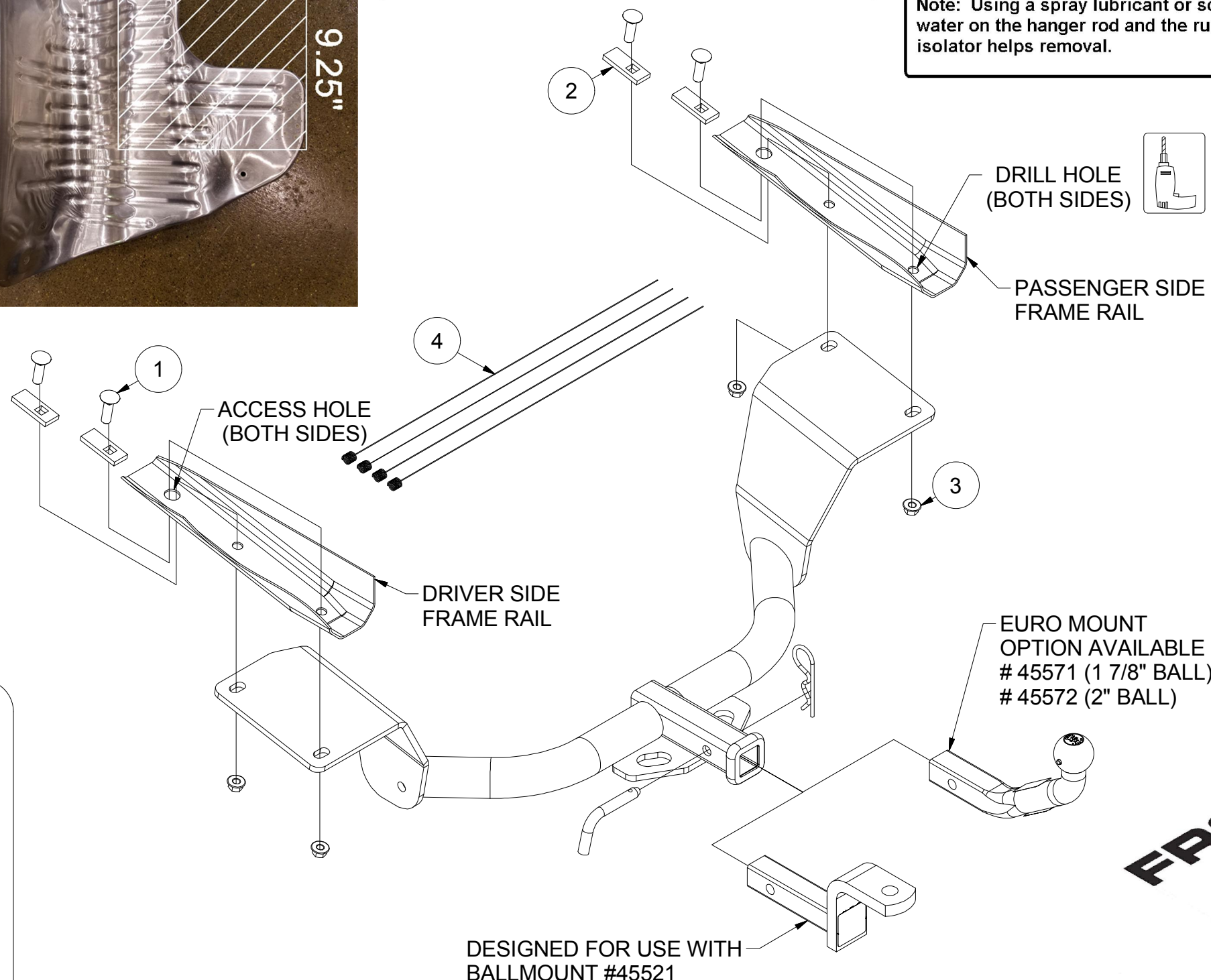
INSTALL TIME

PROFESSIONAL: 30 MINUTES

NOVICE (DIY): 60 MINUTES

INSTALL NOTES:

- DRILLING REQUIRED
- TEMPORARILY REMOVE HEAT SHIELD(S)
- TRIM REQUIRED
- FISHWIRE REQUIRED
- HOLE ENLARGEMENT REQUIRED

**INSTALLATION STEPS**

1. Remove (3) plastic push pins from the fascia using a screwdriver. Locate and remove (4) rubber isolators to lower exhaust. NOTE: To ease installation, locate and remove the plastic exhaust bracket behind the wheel and fascia. Set aside for reinstallation.
2. Locate and remove (3) bolts with a 10mm socket to remove the heat shield. Mark out a 9.25" x 10.50" section using masking tape and trim heat shield. Reinstall heat shield.
3. Raise hitch into position using forward most holes to line up existing holes on frame to mark out (2) rear most holes. Use hitch as a template to drill the (2) rear most holes with a 1/4" bit. Lower hitch and use a 1/4" step drill bit to enlarge (4) holes to 1/2" in diameter.
4. Fishwire (2) 7/16" carriage bolts and (2) CM-SP2 spacers through access hole, located towards the front of each frame rail.
5. Raise hitch into position and loosely fasten (2) conical tooth washers and (2) 7/16" hex flange nuts on each side using 11/16" socket.
6. Torque all 7/16" hardware to 59 ft-lbs. Reinstall exhaust following Step 1 in reverse order.

PERIODICALLY CHECK THIS RECEIVER HITCH TO ENSURE THAT ALL FASTENERS ARE TIGHT AND THAT ALL STRUCTURAL COMPONENTS ARE SOUND.