

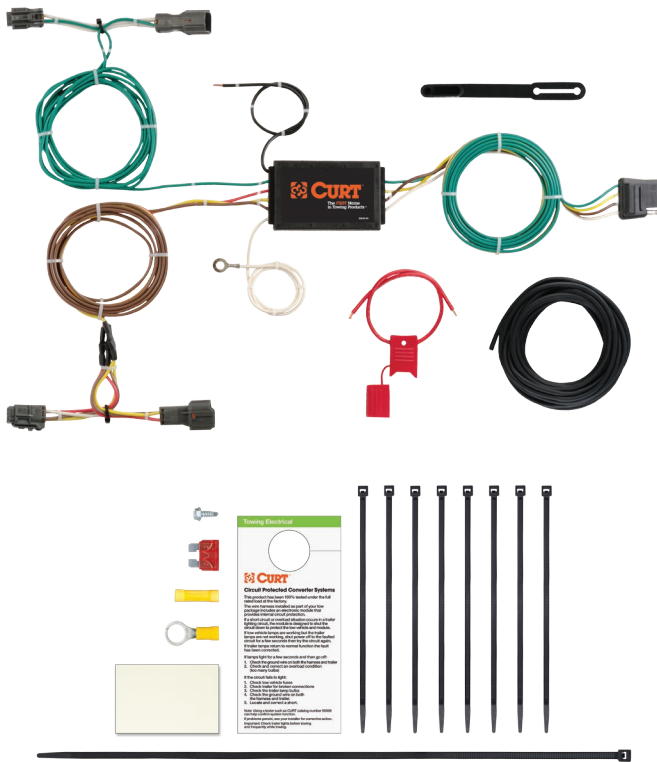
INSTALLATION INSTRUCTIONS

DO NOT EXCEED PRODUCT RATING OR TOW VEHICLE LAMP LOAD RATING, WHICHEVER IS LOWER

56256 APPLICATIONS

Make	Model
Kia	Sorento (without factory tow package)

VEHICLE-TO-TRAILER WIRING HARNESS



WIRING LOCATION GUIDE

SUVs, MINI & FULL-SIZED VANS (S)

Representative vehicle shown below

S1 - Behind driver side taillight housing

S2 - Behind passenger side taillight housing



NOTE

All steps must be followed to ensure the CURT wiring harness will function properly. Once installed, test for proper function by using a test light or connecting a properly wired trailer.

TOOLS NEEDED

- 10mm socket
- Ratchet
- Panel trim removal tool
- Phillips screwdriver
- Wire stripper
- Crimping tool
- Side cutter
- Cutting tool
- Grommet sealant

WARNING

The battery connection must be fuse protected, 10 amp max. Exceeding the product rating can cause loss of warranty, overheating and potential fire. Do not exceed product rating or tow vehicle lamp load rating, whichever is lower.

Signal Circuits - 3.0 amps per side

Tail / Running Circuits - 6.0 amps total

INSTALLATION

Step 1

Locate vehicle battery on the driver side under the hood and disconnect the negative battery terminal (A).

Step 2

Open the vehicle tailgate. Remove all trunk floor coverings and storage trays (B,C,D).

Step 3

Remove the Phillips screws securing the scuff panel (E).

Remove the scuff panel by pulling out on the bottom and then up taking care not to damage the alignment tabs on the back.

Step 4

Starting on the driver side, remove the Phillips screws from the side trim panel (F). Pull back on the side trim panel to locate the grommet in the floor pan (G).

Step 5

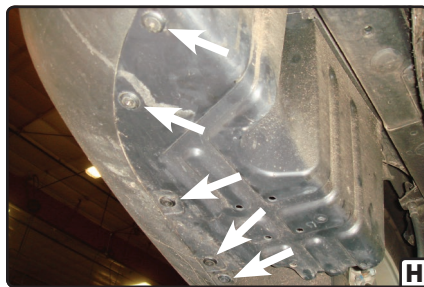
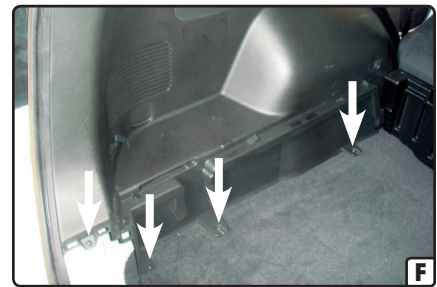
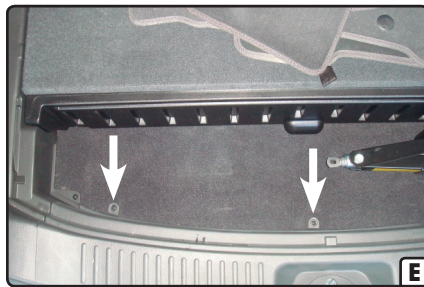
On the driver side, under the vehicle, locate the panel behind the tire. Remove the fasteners securing it in place (H). Remove the panel to gain access to route the CURT wiring harness.

Note: If a harness is routed through the grommet in the floor pan, follow the wires to the connectors and separate them, taking care not to damage the locking tabs (I).

Step 6

From inside the vehicle, remove the grommet and pull up on the vehicle wiring harness. Pull until the disconnected connector under the vehicle and the grommet are located inside behind the side trim panel.

Instructions continued on the page 3



INSTALLATION CONTINUED

Step 7

Remove the two 10mm screws securing the taillight housing (K). Loosen the taillight by gently pulling rearward and out. Behind the taillight housing is the connection for the taillight wiring harness (L). Separate the connector from the taillight housing taking care not to damage the locking tabs. Set the taillight aside.

Step 8

From inside the vehicle route all wiring harness wires, except the 4-flat, through the exposed hole. Using a piece of wire (not included) route the CURT wiring harness end with yellow wire up behind the side trim panel and out of the hole below the taillight (M).

Step 9

Insert the CURT wiring harness end with yellow wire between the separated connectors. Make sure the connectors are fully inserted with locking tabs in place (N).

Step 10

Modify the grommet that was removed from the floor pan in step 7. Taking care not to cut any wires, remove the grommet from the vehicle wiring harness. Using electrical tape, take the grommet and place it on the wiring harness wires and black power wire passing through the hole in the floor pan.

Use a cable tie to help fasten the grommet around the wires (J). Seat the grommet in the floor pan. Use a sealant (not included) to seal grommet where the wires pass through and where grommet was cut.

WARNING: Check for miscellaneous items that may be hidden behind or under any surface before drilling to avoid damage and / or personal injury.

Step 11

Locate a suitable grounding point near the connector such as an existing screw with nut in the vehicle frame or drill a 3/32" pilot hole for the provided screw. The area should be free of rust, dirt and paint. Secure the white ground wire using the ring terminal and provided screw.

Step 12

Locate a flat spot inside the vehicle, near the taillight. Adhere the black converter box using the provided double-sided tape.

Step 13

Route the CURT wiring harness end with the green wire to the passenger side along the backside of the bumper. Using a piece of wire (not included) route the wiring harness end with green wire up behind the side trim panel and out of the hole below the taillight. Repeat steps 7-9 on the passenger side using the harness end with the green wire.

Step 14

Route the black power wire from the vehicle battery as shown on the included CME-PCL-INS sheet.

Step 15

When in use, route the 4-flat to the center of the vehicle. When not in use, roll up and store in a convenient, out of the way location. Secure any loose wires with the provided cable ties.

Step 16

Reinstall all items removed during install and reconnect negative battery terminal. Install the provided 4-flat dust cover to help prevent corrosion.

