

PRODUCT FEATURES:

- Retains factory features in select GM Class II Data Bus vehicles while functioning with an aftermarket radio.
- Pre-programmed to retain factory Steering Wheel Controls.
- Voice Recognition Command from factory SWC.
- Supports Bose, non-Bose and Y-91 audio systems.
- Retains chime functions.
- Built-in chime volume adjustment.
- EIA color coded wiring for easy installation.

PARTS INCLUDED:



SWRGM-48 MODULE

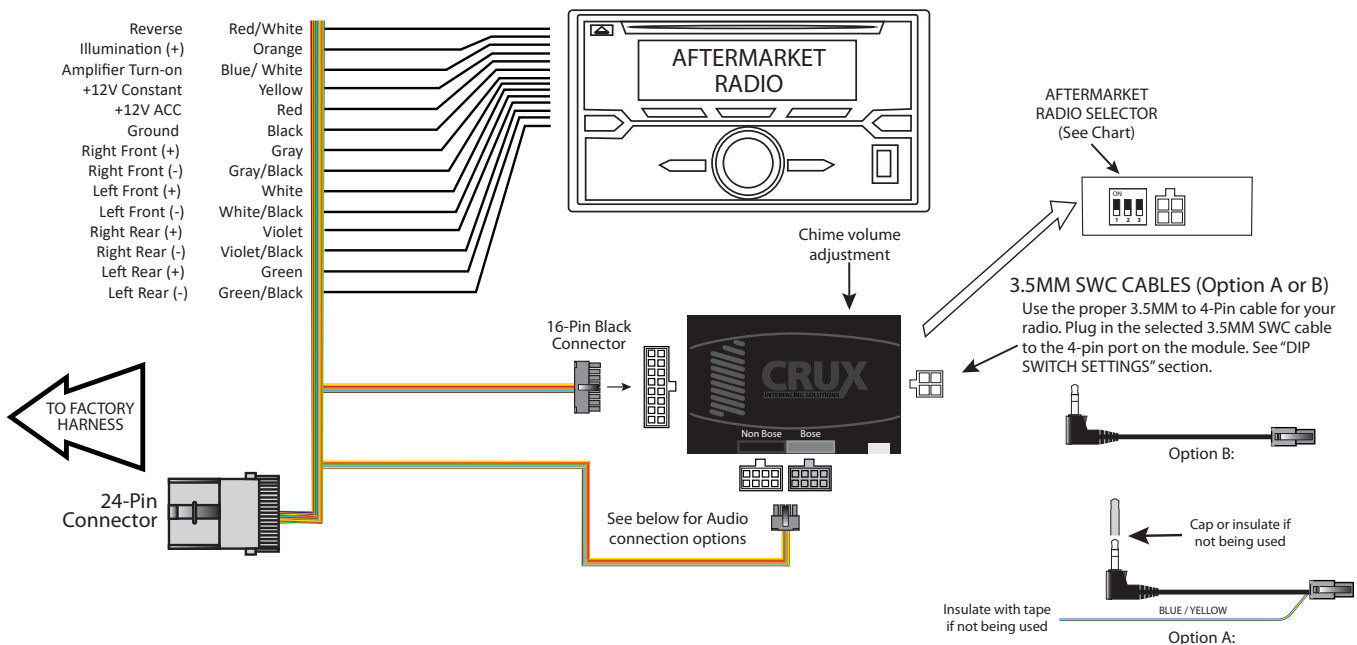


SWRGM-48 HARNESS



SWC CABLE

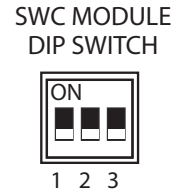
INSTALLATION DIAGRAM:



DIP SWITCH SETTINGS:

AFTERMARKET RADIO DIP SWITCH SETTINGS:

RADIO BRAND:	DIP#:	1	2	3
Atoto, Dual, Fahrenheit, Jensen		OFF	ON	ON
Pioneer, Power Acoustik, Soundstream		OFF	ON	ON
Blaupunkt, Most off-brand Radio		OFF	ON	ON
Alpine		OFF	OFF	OFF
Clarion		ON	ON	OFF
Kenwood		ON	ON	ON
JVC		ON	OFF	ON
Boss, Old Sony		ON	OFF	OFF
New Sony		OFF	ON	OFF



NOTE: For Atoto, Blaupunkt, Dual, Fahrenheit, Power Acoustik, Soundstream, and most off-brand radios, check the aftermarket radio's manual to see if the SWC buttons need to be programmed.

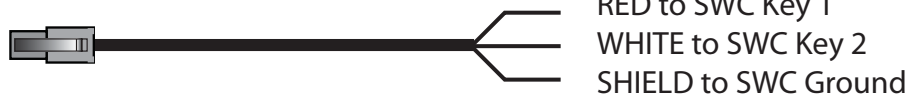
4-PIN SWC CABLE

Use the proper 3.5MM to 4-Pin SWC cable for the aftermarket radio you are using.

OPTION A is used for ALPINE, CLARION. Use the Blue/Yellow wire for JVC and KENWOOD units.
 OPTION B is used for ATOTO, BLAUPUNKT, BOSS, DUAL, FARENHEIT, JENSEN, POWER ACOUSTIK, PIONEER, SONY, SOUNDSTREAM and Most Off-Brand Radios.

NOTE: Cap or insulate the 3.5mm plug or Blue/Yellow wire if not being used.

For aftermarket radios that have wires for SWC connections, cut off the 3.5mm plug on the Crux SWC Cable (option B) and connect the SWC wires as follows:

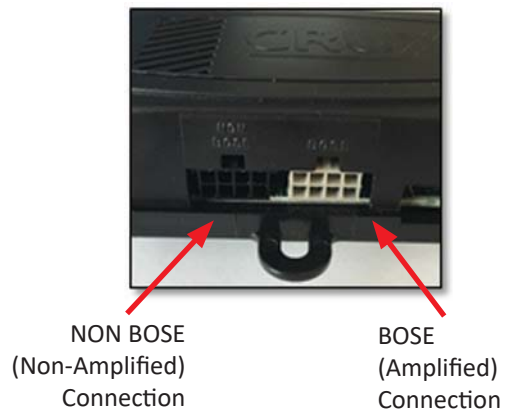


Note that there are some radios that only have SWC1 and SWC2, in this case "shield" does not need to be connected.

SELECTING THE AUDIO SYSTEM:

If the vehicle is equipped with an amplified audio system, the SWRGM-48 has a built-in audio level adaptor that outputs the proper audio level from the aftermarket radio to the factory amplifier. To use this feature, plug in the male 8-pin connector on the SWRGM-48 harness to the GRAY female 8-pin connector on the SWRGM-48 module. The module is also labeled "Bose" and "Non Bose" to avoid confusion. (see picture below)

If the vehicle is NOT equipped with a factory amplified system, plug in the male 8-pin connector to the BLACK female 8-pin on the SWRGM-48 module.



CHIME VOLUME ADJUSTMENT:

The SWRGM-48 has a potentiometer to adjust the chime volume. It is set at half way by default. To adjust the volume, simply use a suitable screw driver and turn the potentiometer clockwise to increase the volume and counter-clockwise to decrease the volume.

Chime
Volume
Adjustment



STEERING WHEEL CONTROL BUTTON FUNCTIONS:

4 BUTTON SWC

<u>SWC Button</u>	<u>SHORT PRESS</u>	<u>LONG PRESS</u>
VOL +	Step Increment	Continuous VOL +
VOL -	Step Decrement	Continuous VOL -
AM/FM	Source	Pick Up Call
Preset	Activate VR /	End Call

NOTES: To Deactivate VR =
 on Pioneer, press "PRESET"
 on JVC = say "Cancel"

To Deactivate VR =
 on Kenwood, long press of PRESET

4 BUTTON SWC

<u>SWC Button</u>	<u>SHORT PRESS</u>	<u>LONG PRESS</u>
ALPINE		
VOL +	Step Increment	Continuous VOL +
VOL -	Step Decrement	Continuous VOL -
Seek Up ▲	Seek Up	N/A
Seek Down ▼	Seek Down	N/A
Source Up	Pick up Call	End Call
Source Down	Source	N/A
Prog		
Voice		

<u>SWC Button</u>	<u>SHORT PRESS</u>	<u>LONG PRESS</u>
CLARION		
VOL +	Step Increment	Continuous VOL +
VOL -	Step Decrement	Continuous VOL -
Seek Up ▲	Preset Up	N/A
Seek Down ▼	Preset Down	N/A
Source Up	Pick up Call	End Call
Source Down	Source	N/A
Prog	Mute	N/A
Voice	Mute	N/A

<u>SWC Button</u>	<u>SHORT PRESS</u>	<u>LONG PRESS</u>
JVC		
VOL +	Step Increment	Continuous VOL +
VOL -	Step Decrement	Continuous VOL -
Seek Up	Seek Up	N/A
Seek Up ▲	Seek Down	N/A
Seek Down ▼	Pick up Call	End Call
Source Down	Source	N/A
Prog	Activate Voice Recognition	N/A
Voice	Activate Voice Recognition	N/A

NOTE: Say "CANCEL" to Deactivate VR

<u>SWC Button</u>	<u>SHORT PRESS</u>	<u>LONG PRESS</u>
KENWOOD		
VOL +	Step Increment	Continuous VOL +
VOL -	Step Decrement	Continuous VOL -
Seek Up ▲	Seek Up	Tune Up
Seek Down ▼	Seek Down	Tune Down
Source Up	Pick up Call	End Call, Deactivate VR
Source Down	Source	N/A
Prog	Activate Voice Recognition	Deactivate VR
Voice	Activate Voice Recognition	N/A

NOTE: BT Inactive, Source Up Activate Call History

<u>SWC Button</u>	<u>SHORT PRESS</u>	<u>LONG PRESS</u>
PIONEER		
VOL +	Step Increment	Continuous VOL +
VOL -	Step Decrement	Continuous VOL -
Seek Up ▲	Preset Up	N/A
Seek Down ▼	Preset Down	N/A
Source Up	Pick up Call	End Call
Source Down	Source	N/A
Prog	Activate Voice Recognition	Deactivate VR, End Call
Voice	Activate Voice Recognition	Deactivate VR

ANALOG SWC

BUICK – Century, LaCrosse, Rainier, Rendezvous, Terraza

CHEVROLET – Corvette, Impala, Monte Carlo

OLDSMOBILE – Alero, Bravada, Silhouette

PONTIAC – Aztec, Grand Am, Grand Prix, Montana, Sunfire

<u>SWC Button</u>	<u>SHORT PRESS</u>	<u>LONG PRESS</u>
ALPINE		
VOL +	Step Increment	Continuous VOL +
VOL -	Step Decrement	Continuous VOL -
Mode / Play	Source	N/A
MUTE	Attenuation	N/A
Seek Up ▲	Seek Up	N/A
Seek Down ▼	Seek Down	N/A
Type Seek / Band	Pick up Call	N/A
Preset / 1-6		End Call

<u>SWC Button</u>	<u>SHORT PRESS</u>	<u>LONG PRESS</u>
CLARION		
VOL +	Step Increment	Continuous VOL +
VOL -	Step Decrement	Continuous VOL -
Mode / Play	Source	N/A
MUTE	Mute	N/A
Seek Up ▲	Preset Up	N/A
Seek Down ▼	Preset Down	N/A
Type Seek / Band	Pick up Call	End Call
Preset / 1-6	N/A	N/A

<u>SWC Button</u>	<u>SHORT PRESS</u>	<u>LONG PRESS</u>
JVC		
VOL +	Step Increment	Continuous VOL +
VOL -	Step Decrement	Continuous VOL -
Mode / Play	Source	N/A
MUTE	Mute	N/A
Seek Up ▲	Seek Up	N/A
Seek Down ▼	Seek Down	N/A
Type Seek / Band	Pick up Call	End Call
Preset / 1-6	Activate Voice Recognition	N/A

NOTE: Say "CANCEL" to Deactivate VR

SWC Button	SHORT PRESS	LONG PRESS
KENWOOD		
VOL +	Step Increment	Continuous VOL +
VOL -	Step Decrement	Continuous VOL -
Mode / Play	Source	N/A
MUTE	Attenuation	N/A
Seek Up ▲	Seek Up	N/A
Seek Down ▼	Seek Down	N/A
Type Seek / Band	Pick up Call	End Call, Deactivate VR
Preset / 1-6	Activate Voice Recognition	N/A

SWC Button	SHORT PRESS	LONG PRESS
PIONEER		
VOL +	Step Increment	Continuous VOL +
VOL -	Step Decrement	Continuous VOL -
Mode / Play	Source	N/A
MUTE	Mute	N/A
Seek Up ▲	Preset Up	N/A
Seek Down ▼	Preset Down	N/A
Type Seek / Band	Pick up Call	End Call
Preset / 1-6	Activate Voice Recognition / Deactivate Voice Recognition	N/A

VEHICLE APPLICATIONS:

Buick		GMC	
2004-2005	Century*	2004-2011	Canyon
2005-2007	LaCrosse*	2002-2009	Envoy
2004-2007	Rainier*	2003-2007	Savana
2003-2007	Rendezvous*	2003-2006	Sierra
2005-2007	Terraza*	2007	Sierra Classic
		2003-2006	Yukon
Cadillac		Hummer	
2003-2006	Escalade	2003-2007	H2
		2005-2010	H3
Chevrolet		Oldsmobile	
2003-2006	Avalanche	2001-2004	Alero*
2000-2005	Cavalier	2002-2004	Bravada*
2004-2013	Colorado	2000-2004	Silhouette*
2005-2013	Corvette*		
2004-2007	Express	Pontiac	
2000-2005	Impala*	2001-2005	Aztec*
2001-2003	Malibu	2001-2005	Grand Am*
2000-2005	Monte Carlo*	2004-2008	Grand Prix*
2003-2004	S-10	2000-2006	Montana*
2003-2006	Silverado	2000-2005	Sunfire*
2007	Silverado Classic		
2003-2006	SSR	Saab	
2003-2006	Suburban	2005-2008	9-7X
2003-2006	Tahoe		
2002-2009	Trailblazer	Saturn	
2005-2008	Uplander	2005-2007	Relay
2003-2005	Venture		
Isuzu			
2003-2008	Ascender		

*Analog Steering Wheel Controls. See pages 5 and 6 for SWC button functions.