



IMPORTANT WARRANTY & INSTALLATION  
INSTRUCTIONS ATTACHED

*Please Forward All Attached Information to Consumer  
Warranty Not Valid Unless Returned to CORSA Performance*



**Please take time to read and understand these installation instructions.**

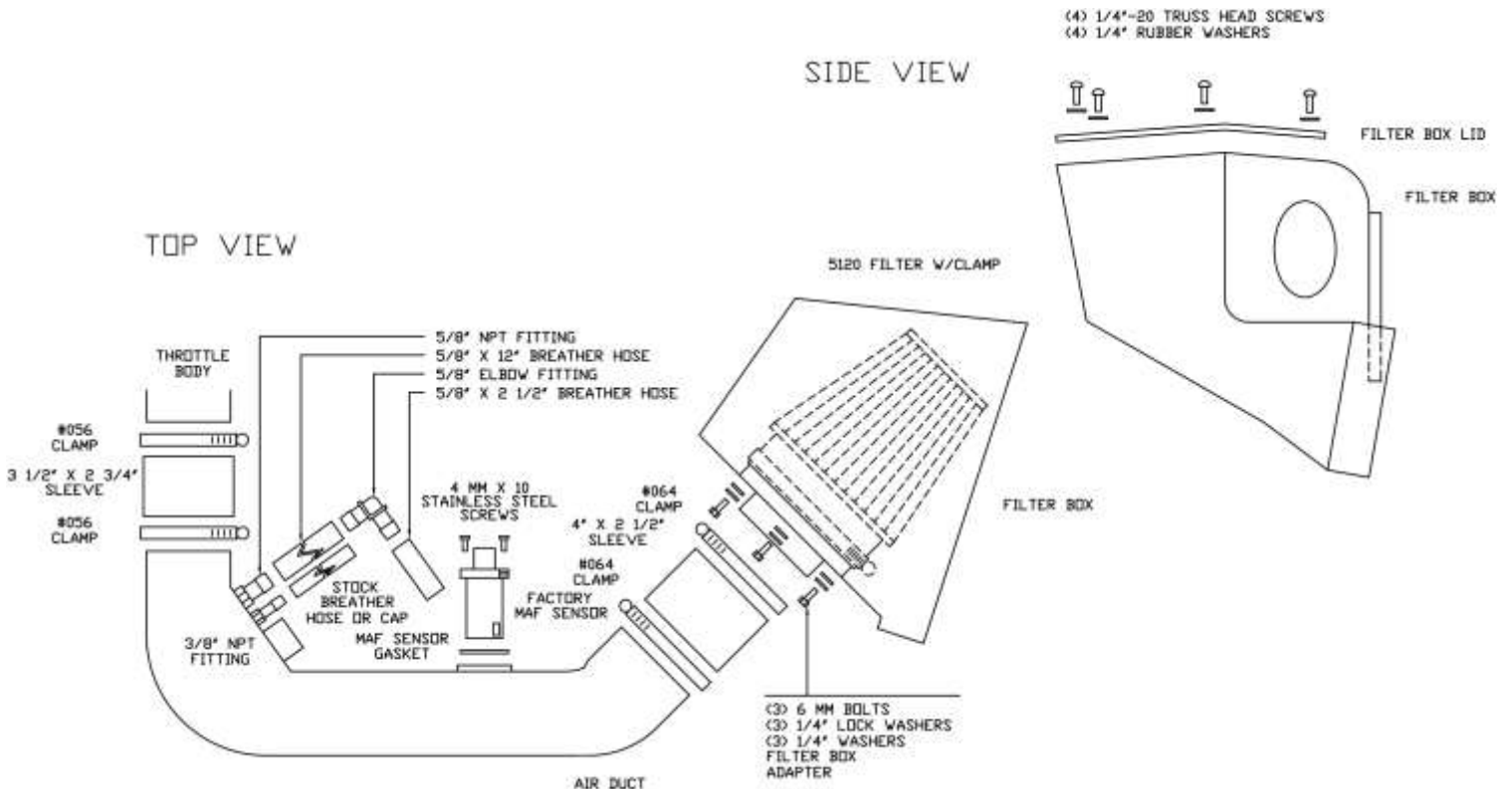
CORSA recommends that the installation of this system be performed by a qualified service center or professional installer who has the necessary equipment, tools and experienced personnel. However, if you decide to perform this install the use of an additional person may be required.

**CAUTION:** Never work on a hot engine bay. Allow time for the vehicle to cool.

### Recommended Tools:

- Flathead Screwdriver
- Assorted Socket-Set
- Ratchet
- Ratchet Extension

Bill of Materials					
1	CORSA Filter Box	2	#056 Clamps	3	1/4" Lock Washers (Preinstalled)
1	Filter Box Lid	1	3 1/2" x 2 3/4" Sleeve	4	1/4" -20 Truss Head Screws
1	CORSA Air Duct	1	4" x 3" Sleeve	4	1/4" Rubber Washers
1	Filter Box Adapter (Preinstalled)	3	6 mm Bolts (Preinstalled)	1	MAF Sensor Gasket
1	Pro-5 Filter #5120 w/Clamp	3	1/4" Washers (Preinstalled)	2	4 mm x 10 SS Screws
2	#064 Clamps	2	#056 Clamps	1	5/8" NPT Fitting (Preinstalled)



### Installation Instructions:

Locate your vehicle's battery and disconnect the negative battery cable, this resets the computer and clears old air flow data to prevent CEL errors.

1. Remove the four bolts holding the strut brace using a 13mm socket. **Save all parts for reinstallation. (Fig A)**
  2. Lift to remove the engine cover. **Save for reinstallation. (Fig B)**
  3. Using pliers, remove the large hose from the stock air duct ONLY. **Do not detach from the engine. (Fig C)**
  4. Unsnap the loop holding the large hose to the stock air box and detach. **(Fig D)**
  5. Unclip the breather hose from the engine and stock air duct. **Save in case vehicle needs to be returned to stock. (Fig E)**
  6. Carefully unplug the Mass Air Flow (MAF) sensor. **(Fig F)**
  7. Loosen the clamps, first near the stock air box then on the throttle body using an 8mm socket. **(Fig G)**
  8. Pull the stock air duct from the vehicle. **Save in case vehicle needs to be returned to stock. (Fig H)**
  9. Below the MAF sensor area, pull the retaining clip holding the wiring harness away from the stock box. **(Fig I)**
  10. Remove the stock bolt holding the stock air box to the vehicle using a 10mm socket and remove the stock air box. **Save the stock bolt for reinstallation. Save the stock air box in case the vehicle needs to be returned to stock. (Fig J)**
  11. Remove the MAF sensor from the factory unit using a T20 Torx bit. **(Fig K)**
  12. Install the MAF sensor into the CORSA air duct using the *(supplied)* gasket and screws. **(Fig L)**
- WARNING: Over tightening hardware may alter the integrity of the CORSA air intake system.**
13. Install the Pro-5 filter onto the adapter inside the CORSA air box using an 8mm socket. **(Fig M)**
  14. Using the *(supplied)* screws, attach the CORSA lid to the CORSA air box. **(Fig N)**
  15. Slide the *(supplied)* 4" straight sleeve with two *(supplied)* #64 clamps onto the CORSA air duct adapter end and attach the duct onto the CORSA air box. The angle of the CORSA air duct may need to be adjusted once inside the engine bay. **(Fig O)**
  16. Attach the *(supplied)* 3.5" straight sleeve with two *(supplied)* #56 clamps to the throttle body. **(Fig P)**

CONTINUED ON NEXT PAGE



17. Insert the CORSA air box, with the CORSA air duct attached, into the vehicle. **(Fig Q)**
18. Insert the CORSA air duct into the 3.5" straight sleeve on the throttle body. **(Fig R)**
19. Tighten the clamps using an 8mm socket, first on the throttle body then on the CORSA air box. **(Fig S)**
20. Using pliers attach the large hose to the CORSA air duct. **(Fig T)**
21. Slide the *(supplied)* cap over the small NPT plastic fitting. **(Fig U)**
22. Attach the two pieces of *(supplied)* 5/8" hose to the *(supplied)* elbow. **(Fig V)**
23. Connect the shorter end to the factory breather hose location and the longer end to the CORSA air duct. **(Fig W)**
24. Plug in the MAF sensor. **(Fig X)**
25. Reinstall the engine cover. **(Fig Y)**
26. Reinstall the strut brace using a 13mm socket. **(Fig Z)**
27. **Reconnect** the battery cable.

**\*Check that this air intake complies with your Federal, State and Local laws. We recommend saving your factory system.**

---

### **BEFORE ROAD TESTING**

1. Start engine, leaving the transmission in park and securing the parking brake.
  2. Make sure to look and listen for any unusual noises or air leaks. Repair problems if needed.
  3. Once completed it will be necessary to check periodically, after a few heat cycles, for realignment and tightening of all connections.
- 

### **CARE AND CLEANING**

Check the Pro-5 cotton reusable filter periodically and remove any excessive dirt build-up by tapping the filter on the ground and brushing off the loosened dirt. Clean the filter by using a two stage cleaning kit to thoroughly clean and re-oil the filter. Re-oil every 10,000 miles without cleaning to improve filtering in sand and dirt. Clean only when dirt is very excessive or 20,000 miles.

---

**PICTURES ON NEXT PAGE** 

### Installation Pictures



Fig. A



Fig. B



Fig. C



Fig. D



Fig. E



Fig. F

CONTINUED ON NEXT PAGE



### Installation Pictures



Fig. G



Fig. H



Fig. I



Fig. J



Fig. K



Fig. L

CONTINUED ON NEXT PAGE 

### Installation Pictures



Fig. M

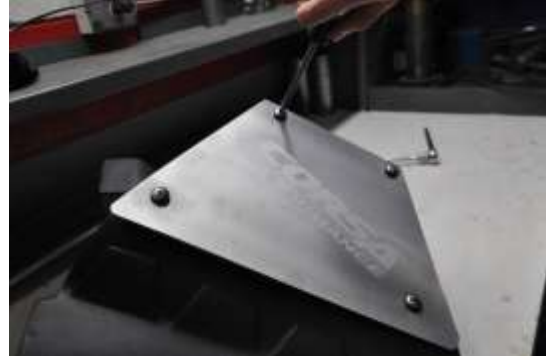


Fig. N



Fig. O



Fig. P



Fig. Q



Fig. R

CONTINUED ON NEXT PAGE 

### Installation Pictures



Fig. S



Fig. T



Fig. U



Fig. V



Fig. W



Fig. X

CONTINUED ON NEXT PAGE 



### Installation Pictures



Fig. Y



Fig. Z