

17-21 CHEVROLET CAMARO ZL1 6.2L

CORSA[®]
PERFORMANCE



IMPORTANT! INSTALLATION INSTRUCTIONS

Please Forward All Information to Consumer

Be sure to review the enclosed instructions prior to beginning the installation process.



NEVER work on a hot engine bay.
Allow time for the vehicle to cool.

INSTALL DIFFICULTY



RECOMMENDED TOOLS & SUPPLIES

- Phillips Screwdriver
- T20 Torx Screwdriver
- ¼" Drive Ratchet
- 7/16" Socket
- 8mm Socket
- 10mm Socket
- Trim Removal Tool
-

2017-2021 CHEVROLET CAMARO ZL1

Carbon Fiber Open Element Air Intake

Part #: 44005, 44005D



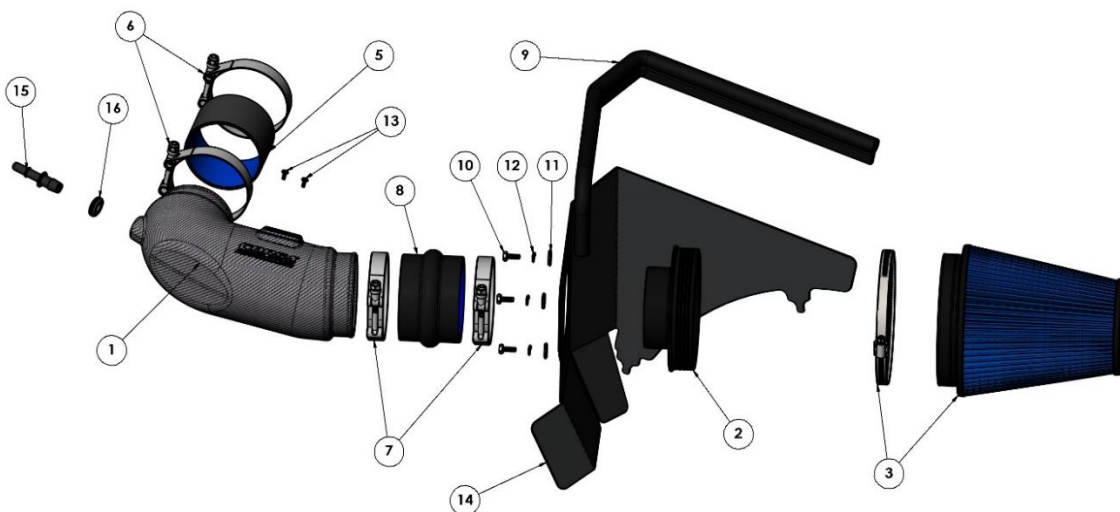
Please take time to read and understand these installation instructions.

CORSA recommends that the installation of this system be performed by a qualified service center or professional installer who has the necessary equipment, tools, and experienced personnel. However, if you decide to perform this installation yourself, the use of an additional person may be required.

WARNING: Never work on a hot engine bay. Allow time for the vehicle to cool.

Check that this air intake complies with your Federal, State, and Local laws. We recommend saving your stock system.

This warranty does not extend to damaged or defect in the finish of a product or to any product, that in the opinion of CORSA Performance, has been misused, damaged by accident or negligence, altered or modified in any way, faulty installation or installed contrary to CORSA installation instructions, or repaired by an unauthorized service facility.



PREASSEMBLED MATERIALS

1. Carbon Fiber Air Duct (441322)	1	2. Filter Adaptor (460641)	1		
3. Oiled Filter (5167NLP) Dry Filter (5167DNLP)	1	14. Aluminum Heat Shield (612044)	1		

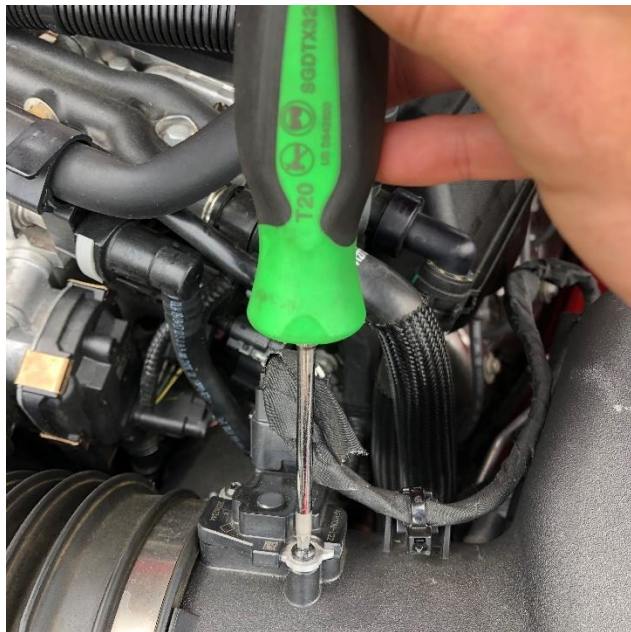
HARDWARE KIT

5. Silicone Hose (53108)	1	6. T-Bolt Clamp 4" (520400)	2	7. T-Bolt Clamp 4.375" (520438)	2
8. Silicone Hump Hose (53206)	1	9. Hood Seal Trim (56006)	1	10. Bolt M6mm-16 (59012210)	3
11. Washer 1/4" x 5/8" (59020101)	3	12. Lock Washer 1/4" (59020114)	3	13. Screw M4x8mm (59051208)	2
15. Connector Fitting 1/2" Barb 3/8" Bundy Male (652117)	1	16. Rubber Grommet 1/2" ID (652126)	1		

*Locate the vehicle's battery and disconnect the negative battery cable.
This may reset the computer and clear old air flow data to help prevent CEL errors.*

REMOVAL INSTRUCTIONS

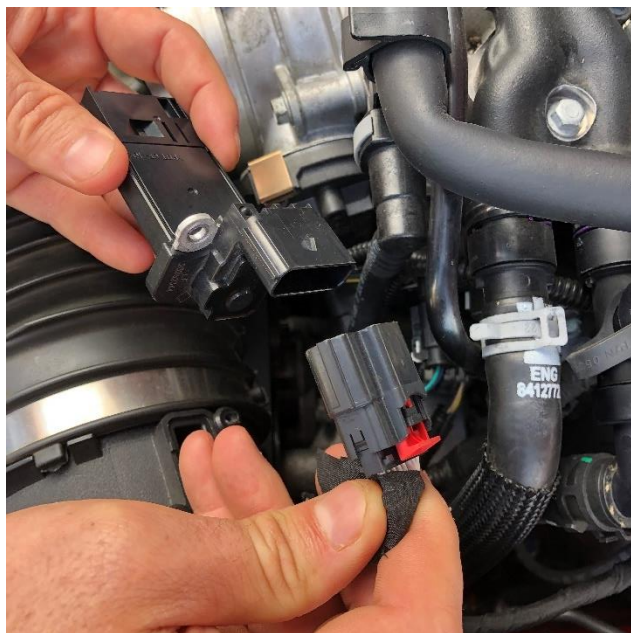
FACTORY INTAKE



- 1.** Remove MAF sensor screws using a T20 Torx bit or screwdriver.



- 2.** Pull out MAF sensor and remove clip from factory air duct.



- 3.** Unclip MAF sensor from wiring harness by pulling on the red tab. Set MAF sensor aside for installation



- 4.** Loosen clamp to remove factory air duct from throttle body by using an 8mm socket.

Continued on Next Page . . .

REMOVAL INSTRUCTIONS

FACTORY INTAKE



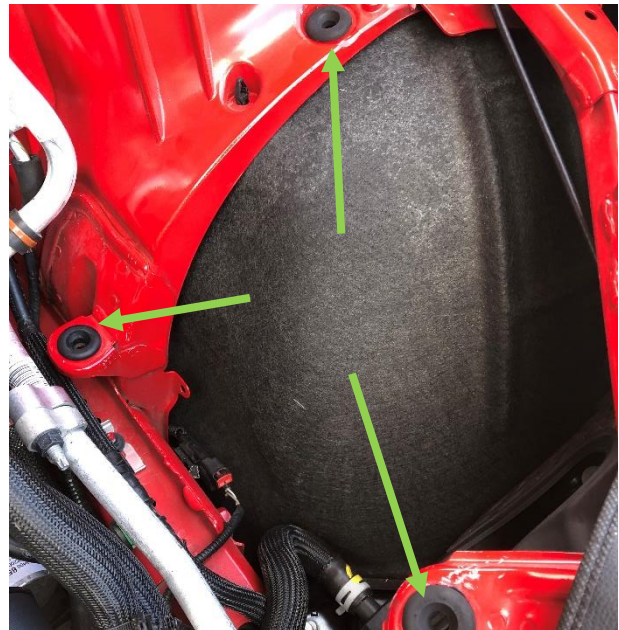
- 5.** Remove breather hose from factory air duct by pressing on the light grey tabs on the quick disconnect fitting.



- 6.** Unclip MAF sensor wiring harness from factory air box using the Trim Removal Tool.



- 7.** Use Trim Removal Tool to unclip the wiring harness retention clip located on the bottom left side of the airbox.

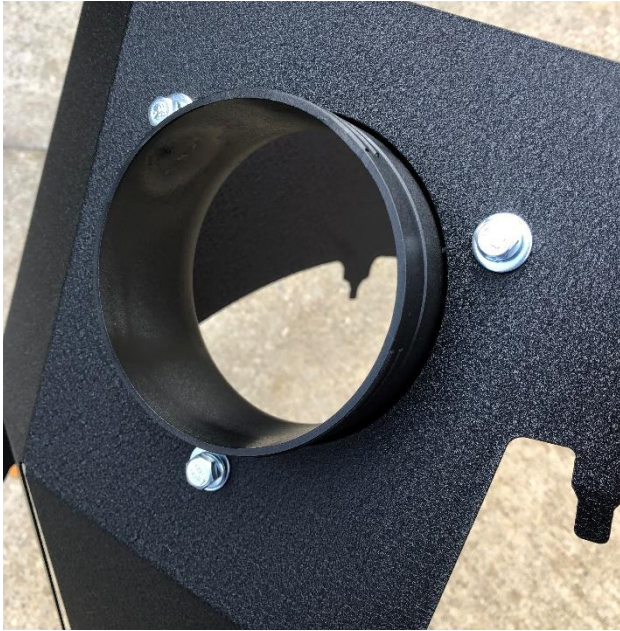


- 8.** Remove factory air intake from engine bay. Make sure the 3 rubber grommets are not removed when pulling out the intake. Grommets are used during installation.

This concludes the removal of the factory intake.

INSTALLATION INSTRUCTIONS

CORSA INTAKE



- 1.** Attach Filter Adaptor (#2) to Aluminum Heat Shield (#14) as shown using the 3 washers (#11), lock washers (#12), and bolts (#10) using the 10mm socket and ratchet.



- 2.** Attach Hood Seal Trim (#9) to top of Aluminum Heat Shield.



- 3.** Install Rubber Grommet (#16) and Connector Fitting (#15) into the opening on the Carbon Fiber Air Duct (#1).



- 4.** Install factory MAF sensor to the air duct using the 2 provided screws (#13) and a Phillips screwdriver.

Continued on Next Page ...

INSTALLATION INSTRUCTIONS

CORSA INTAKE



- 5.** Attach Silicone Hose (#5) and 4" T-Bolt Clamps (#6) to throttle body side of air duct. Attach Silicone Hump Hose (#8) and 4.375" T-Bolt Clamps (#7) to opposite end of air duct. Slide Silicone Hump Hose over the Filter Adaptor.



- 6.** You can now insert the CORSA air intake into the engine bay. Make sure the Aluminum Heat Shield sits in the 3 rubber grommets from Step 8 of removal instructions. Connect breather hose to air duct using the Connector Fitting.



- 7.** Tighten 4" T-Bolt Clamps to the air duct and throttle body using a 7/16" socket and ratchet. NOTE: Take care to not over tighten clamps.



- 8.** Tighten 4.375" T-Bolt Clamps on to the air duct and Filter Adaptor using the 7/16" socket. NOTE: Take care to not over tighten clamps.

Continued on Next Page ...

2017-2021 CHEVROLET CAMARO ZL1

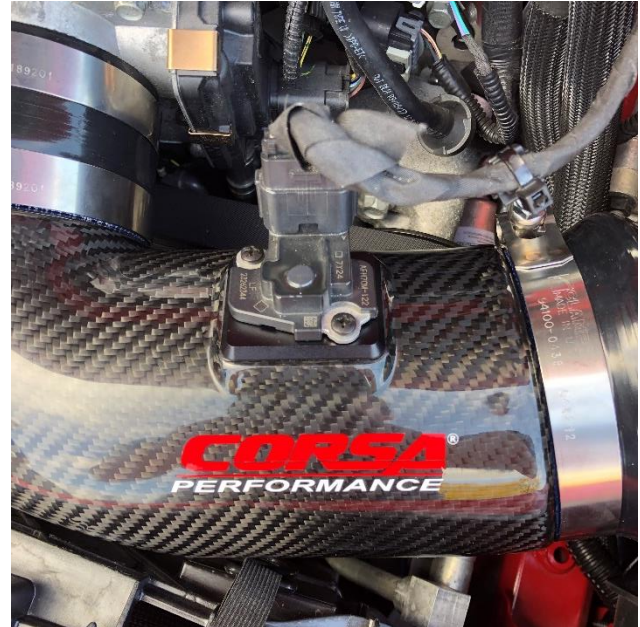
Carbon Fiber Open Element Air Intake

Part #: 44005, 44005D

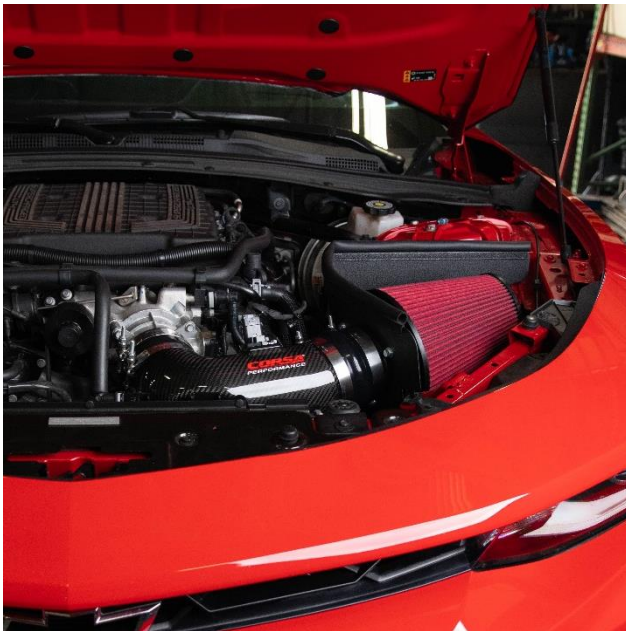
CORSA[®]
PERFORMANCE



- 9.** Attach the Air Filter (#3) to the filter adaptor so it sits inside the heat shield. Tighten the clamp using the 8mm socket as shown.



- 10.** Reattach the MAF wiring harness to the MAF sensor. There will be a click when the harness is correctly inserted into the MAF sensor.



- 11.** Installation complete.

*Check that this air intake complies with your Federal, State and Local laws.
We recommend saving your stock system.*

2017-2021 CHEVROLET CAMARO ZL1

Carbon Fiber Open Element Air Intake

Part #: 44005, 44005D



BEFORE ROAD TESTING

1. Start engine, leaving the transmission in park and securing the parking brake.
 2. Make sure to look and listen for any unusual noises or air leaks. Repair problems if needed.
 3. Once completed it will be necessary to check periodically, after a few heat cycles, for realignment and tightening of all connections.
-

MAXFLOW5 CARE AND CLEANING

Check the MAXFLOW5 cotton reusable filter periodically and remove any excessive dirt build-up by tapping the filter on the ground and brushing off the loosened dirt. Clean the filter by using a two stage cleaning kit to thoroughly clean and re-oil the filter. Re-oil every 10,000 miles without cleaning to improve filtering in sand and dirt. Clean only when dirt is very excessive or 50,000 miles.

Reference for Replacement Filters: MAXFLOW5 Filter Part # 5167 or DRYTECH 3D Filter Part # 5167D