

2021+ Ford Bronco



IMPORTANT! WARRANTY AND INSTALLATION INSTRUCTIONS

Please Forward All Information to End Consumer

Be sure to review the enclosed instructions prior to beginning the installation process. If you have any questions about the enclosed parts or instructions, or if you encounter a problem during installation:

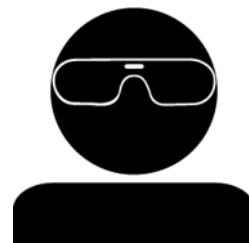
CALL TECHNICAL SUPPORT: 440.891.0999 or 800.486.0999

TO ACTIVATE YOUR WARRANTY, GO TO:
corsaperformance.com/warranty

COLOR INSTRUCTIONS ARE AVAILABLE BY PART NUMBER ON:
corsaperformance.com



NEVER work on a hot exhaust system.
Allow time for the vehicle to cool.



Always wear eye protection
when working under a vehicle.

INSTALL DIFFICULTY



Recommended Tools & Supplies

- 10mm Socket & Ratchet or Wrench
- 15mm Socket & Ratchet or Wrench
- Torque Wrench
- Ratchet Extension
- Grommet Pulling Pliers or Similar

Kit: (2.3L) 21203, 21204, 21204BPC, 21205, 21206, 21206BPC,
(2.7L) 21207, 21208, 21208BPC, 21209, 21210, 21210BPC

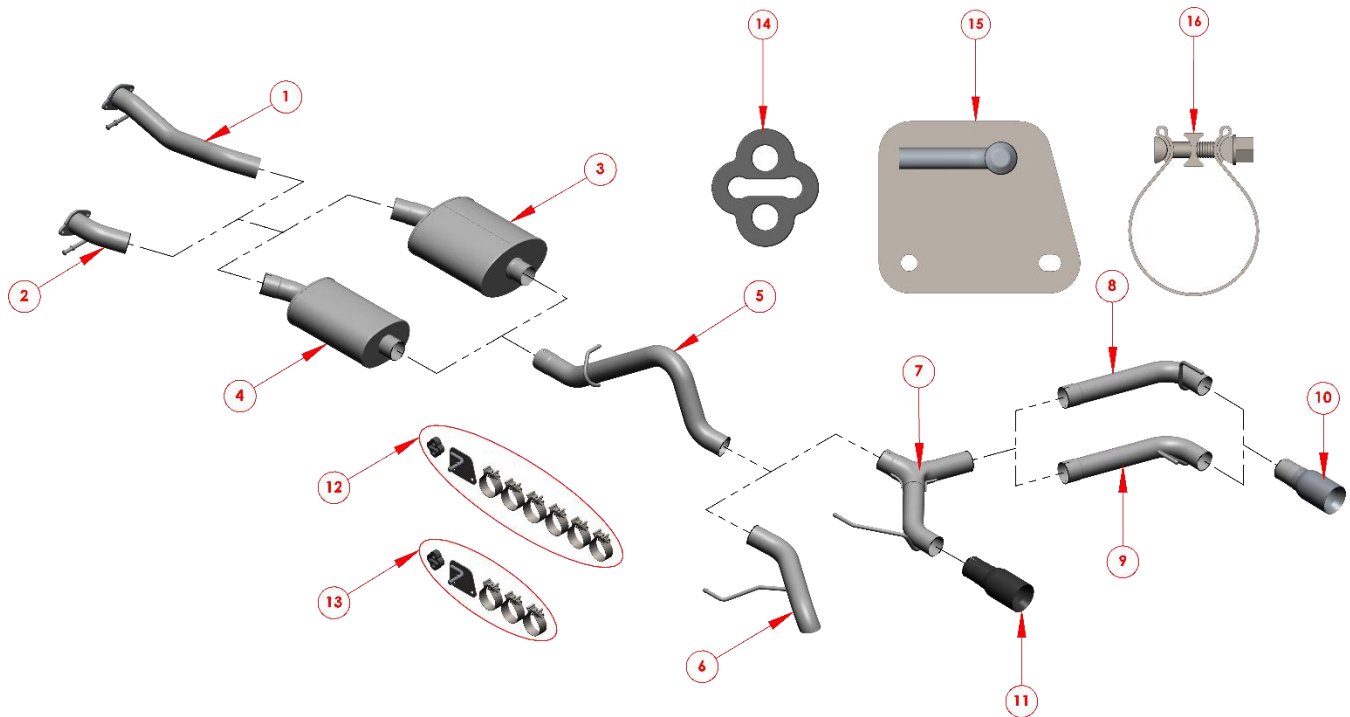
Please take time to read and understand these installation instructions.

CORSA recommends that the installation of this system be performed by a qualified service center or professional installer who has the necessary equipment, tools, and experienced personnel. However, if you decide to perform this installation yourself, the use of an additional person may be required.

WARNING: Never work on a hot exhaust system. Allow time for the vehicle to cool.
Always wear eye protection when working under a vehicle.

This warranty does not extend to damaged or defect in the finish of a product or to any product, that in the opinion of CORSA Performance, has been misused, damaged by accident or negligence, altered, or modified in any way, faulty installation or installed contrary to CORSA installation instructions, or repaired by an unauthorized service facility. Full warranty available on www.corsaperformance.com

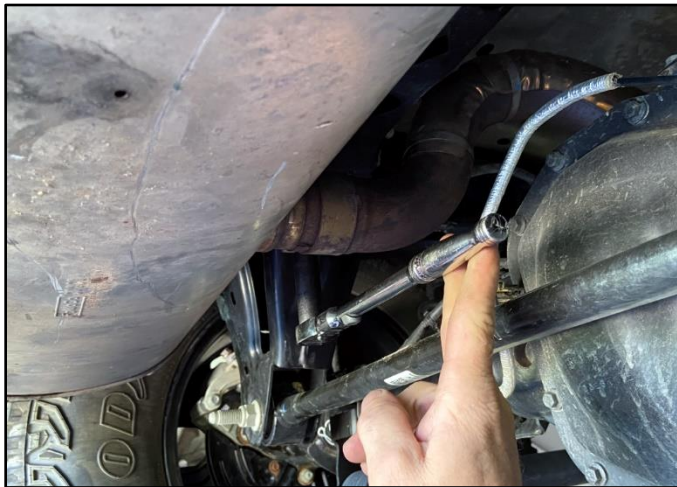
Please confirm that all parts are present according to the bill of materials before beginning the installation.



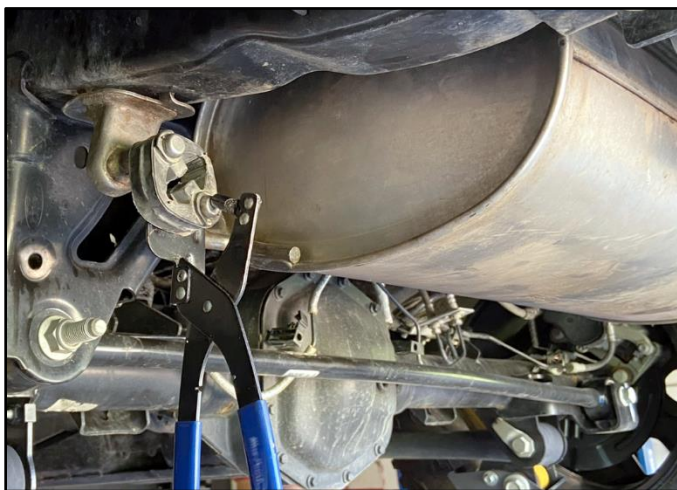
Bill of Materials

| | |
|---|---|
| 1. 4-Door Head Pipe (20BR4011) | 2. 2-Door Head Pipe (20BR4012) |
| 3. 2.7L Muffler (20BR2007) | 4. 2.3L Muffler (20BR2003) |
| 5. Mid-Pipe (20BR4013) | 6. Single Tail Pipe (20BR4014) |
| 7. Wye and Driver Tail Pipe (20BR4016) | 8. 2.7L Passenger Tail Pipe (20BR4017) |
| 9. 2.3L Passenger Tail Pipe (20BR4013) | 10. Polished Tip Assembly (28JK3002) |
| 11. Black Powder Coated Tip Assembly (28JK3002BPC) | 12. Dual Tip Hardware Kit (20BR7012) |
| 13. Single Tail Pipe Hardware Pack (20BR7011) | 14. Front Isolator (25TU7014) (In Hardware Kit) |
| 15. Frame Mounted Hanger (20BR7010) (In Hardware Kit) | 16. 2.75in Clamp (16CF7005) (In Hardware Kit) |

If something is missing, call CORSA Tech Support at 440.891.099 or Toll Free: 1.800.486.0999

Removal Instructions**Factory Exhaust**

1. Locate the Clamp on the inlet of the Factory Muffler. With a 15mm Socket & Ratchet or Wrench, loosen the clamp.



Driver Side



Passenger Side

2. Locate the Rear Hanger Grommets for the Muffler. Using Grommet Pulling Pliers or similar, remove Factory Hangers from the Grommets.

The use of a soap and water solution will aid in the removal of the hangers from the factory grommets.

3. Remove the Factory Muffler from the vehicle by wiggling and twisting it back and forth while pulling the Muffler toward the rear of the vehicle.

Continued on Next Page...

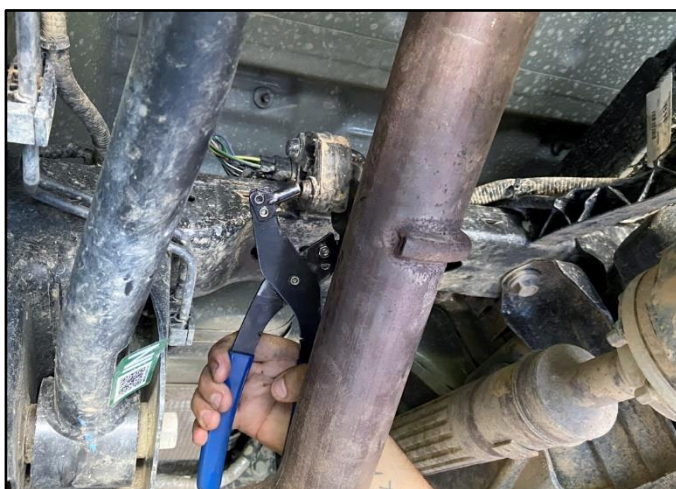
Removal Instructions

Factory Exhaust



- 4.** Use a 15mm Socket & Ratchet or Wrench to remove the nuts that attach the Factory Head Pipe Flange to the Flex Pipe Flange.

Keep the nuts in a safe place. They will be reinstalled on Installation Step 4.



- 5.** Locate the Mid-Pipe Hanger Grommet. Using Grommet Pulling Pliers or similar, remove Factory Hanger from the Grommet.

The use of a soap and water solution will aid in the removal of the hangers from the factory grommets.

- 6.** Using the soap and water mixture, lubricate the front Head Pipe Hanger Grommet.

Next, pull back and to the center of the vehicle on the Factory Exhaust to release the connection on the Head Pipe and Front Isolator. Then, remove the exhaust by pushing the Factory Exhaust forward and out from under the Vehicle. A second person may be needed to assist with this step.

Continued on Next Page...

Removal Instructions

Factory Exhaust



- Use a 10mm Socket & Ratchet or Wrench to remove the bolts that attach the frame-mounted Isolator. The Isolator will not be reused.

Keep the Bolts in a safe place. They will be reinstalled on Installation Step 1.

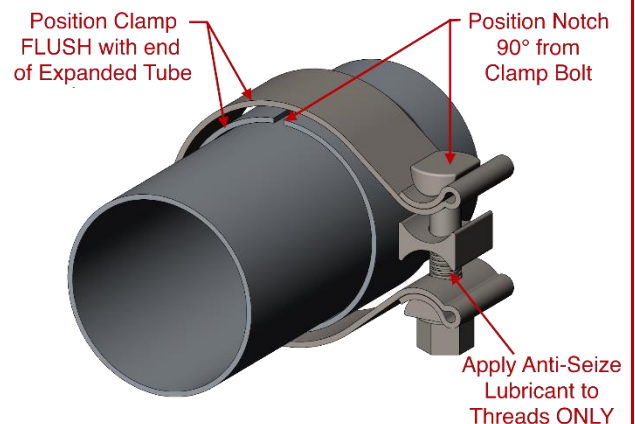
This concludes the removal of the factory exhaust.

WARNING!!**DO NOT SKIP THIS STEP****WARNING!!**

It is recommended to apply anti-seize lubricant to the threads **ONLY** of the clamps and flange bolts. Failure to follow this procedure can cause nuts to seize on clamps and potentially destroy threads.

After applying anti-seize lubricant, be sure to thoroughly clean your hands. Anti-Seize lubricant will tarnish stainless steel.

All clamps should be tightened using a properly calibrated Torque Wrench. Using an impact gun will damage the clamp and reduce its ability to effectively seal the joint. It may also cause the joint to separate, thereby causing damage to your exhaust system and to your vehicle.

**PRO TIP**

Before installing, make a line $1\frac{5}{8}$ in from the end of non-expanded side of the pipes and muffler. This is CORSA's nominal overlap for $2\frac{3}{4}$ in tubing. This will help during final adjustment. Do not be alarmed if the overlap varies slightly when the installation is complete. Any differences are caused by manufacturing variances from vehicle to vehicle and exhaust to exhaust.

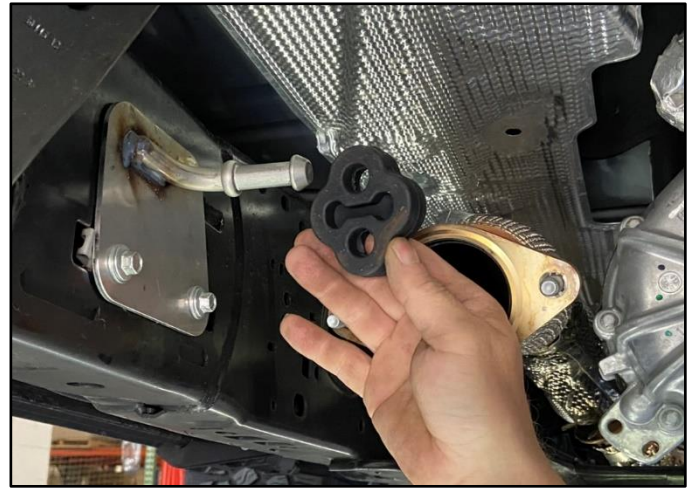
Install Instruction

CORSA Exhaust



1. Locate the Frame Mounted Hanger from the Hardware Kit and the bolts removed in Removal Step 7.

Use a 10mm Socket & Ratchet or Wrench and tighten the bolts to attach the Frame Mounted Hanger to the Frame.



2. Locate the Isolator from the Hardware Kit and slide it over the Frame Mounted Hanger.

The use of a soap and water solution will aid in the installation of the hangers and the grommets.



2-Door



4-Door

3. Locate the CORSA Head Pipe. Insert the Head Pipe Hanger into the Isolator, then slide the Head Pipe Flange over the bolts in the Flex Pipe Flange.

The use of a soap and water solution will aid in the installation of the hangers and the grommets.

4. Next, use a 15mm Socket & Ratchet or Wrench and **SNUG** the nuts removed in Removal Step 4.
DO NOT FULLY TIGHTEN at this time!

Continued on Next Page...

Install Instruction

CORSA Exhaust



5. Locate the CORSA Mid Pipe. Insert the Hanger on the Mid-Pipe into the Grommet. Allow the front of the Mid-Pipe to rotate down so the back rests on the Frame Crossmember.

Slide a supplied 2.75in Clamp over the Expanded end of the Mid-Pipe. Make sure the Nut side of the Clamp is down, and on the side toward the Drive Shaft.



6. Slide a supplied 2.75in Clamp over the CORSA Head Pipe. Then slide the Expanded end of the CORSA Muffler over the outlet of the Head Pipe.

Next, rotate the CORSA Mid-Pipe up and slide the Expanded end of the Mid-Pipe over the outlet of the Muffler. Then lift all three parts until the exhaust is close to level.

A second person may be needed to hold Muffler in place.



7. While the Mid-Pipe/Muffler/Head Pipe are being held close to level, **SNUG** both Clamps with a 15mm Socket & Ratchet or Wrench. A second person may be needed to hold Exhaust in place while the other snugs the clamps.

DO NOT FULLY TIGHTEN at this time!

Continued on Next Page...

Install Instruction

CORSA Exhaust

For Kits 21203, 21205, 21207, and 21209 (No Tips), follow Steps 9-10.

For Kits 21204(BPC), 21206(BPC), 21208(BPC), and 21210(BPC) (Dual Tips), skip ahead to Step 11.



- 8.** Insert the Hanger on the Tail Pipe into the Grommet.

The use of a soap and water solution will aid in the installation of the hangers and the grommets.

- 9.** Slide a supplied 2.75in Clamp over the Tail Pipe. Next rotate the Tail Pipe up and the Mid-Pipe down and slide the Expanded end of the Tail Pipe over the Mid-Pipe. **SNUG** the Clamp with a 15mm Socket & Ratchet or Wrench.

DO NOT FULLY TIGHTEN at this time!

- 10.** Starting at the front, verify the Hanger sections are centered in the Grommets and the Muffler are close to level and all connections are straight. Starting at the Front Clamp and using a torque wrench, tighten all clamps to 45ft-lbs. Torque the Frame Mounted Hanger and Flange Nuts to manufacturer specifications.

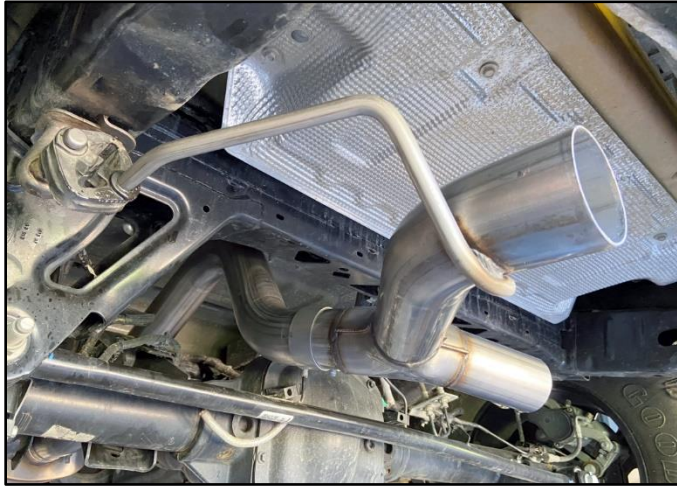
A second person may be needed to hold the components in the correct position while the clamps are being torqued.

Skip ahead to the last page for the final instructions before starting the vehicle.

Continued on Next Page...

Install Instruction

CORSA Exhaust



- 11.** Insert the Hanger on the Driver side Tail and Wye Pipe into the Grommet. Next, slide a supplied 2.75in Clamp over the Tail Pipe. Then, rotate the Tail Pipe up and the Mid-Pipe down while sliding the Expanded end of the Tail Pipe over the Mid-Pipe. **SNUG** the Clamp with a 15mm Socket & Ratchet or Wrench.

DO NOT FULLY TIGHTEN at this time!



- 12.** Insert the Hanger on the Passenger side Tail Pipe into the Grommet. Then, slide a supplied 2.75in Clamp over the Passenger side Tail Pipe. Next, slide the Expanded end of the Tail Pipe over the Wye Pipe. **SNUG** the Clamp with a 15mm Socket & Ratchet or Wrench.

DO NOT FULLY TIGHTEN at this time!



- 13.** Slide a supplied 2.75in Clamp over each Tip assembly and then slide the Expanded ends of the Tip assemblies over the Tail Pipes, with the CORSA etch on top.

SNUG the Clamps with a 15mm Socket & Ratchet or Wrench.

DO NOT FULLY TIGHTEN at this time!

Continued on Next Page...

Install Instruction**CORSA Exhaust**

- 14.** Verify the Tips are straight across and even. There should be approximately $\frac{3}{4}$ in between the top of the Tips and the Bumper. To adjust, you may need to loosen the Tail Pipe Clamps from Steps 11 and 12. A second person may be needed to hold the components in the correct position while the clamps are being snugged.
- 15.** Starting at the front, verify the Hanger sections are centered in the Grommets and the Muffler are close to level and all connections are straight. Starting at the Front Clamp and using a torque wrench, tighten all clamps to 45ft-lbs. Torque the Frame Mounted Hanger and Flange Nuts to manufacturer specifications.

A second person may be needed to hold the components in the correct position while the clamps are being torqued.

This concludes the installation of the CORSA Exhaust.

Before Road Testing

- 1.** Start engine, leaving the transmission in park and/or securing the parking brake.
- 2.** Make sure to look and listen for any unusual noises. Repair problems if needed.
- 3.** Immediately following the installation of your exhaust system, you may experience a trace of smoke after initial start-up. Do not be alarmed. The smoke is caused by the burning of a small amount of forming oil residue used in the manufacturing process.
- 4.** It is strongly suggested that the alignment of the components and all clamps be checked and re-torqued after road testing the vehicle and once the system has fully cooled.
- 5.** During cold weather start-ups, you may experience an exhaust sound that is deeper and louder in tone than usual. This is temporary and will diminish to normal levels once your engine has reached its normal operating temperature.