

19+ **DODGE**

**RAM 1500 5.7L**

**CORSA**<sup>®</sup>  
**PERFORMANCE**



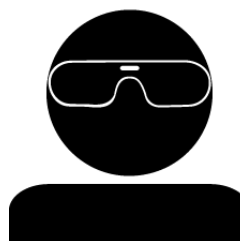
## **IMPORTANT!** **INSTALLATION INSTRUCTIONS**

*Please Forward All Information to Consumer*

Be sure to review the enclosed instructions prior to beginning the installation process.



**NEVER work on a hot exhaust system.**  
Allow time for the vehicle to cool.



Always wear eye protection  
when working under a vehicle.

### **INSTALL DIFFICULTY**



### **RECOMMENDED TOOLS & SUPPLIES**

- 13mm Socket or Wrench
- 16mm Socket or Wrench
- Grommet Pullers or Similar Device
- Penetrating Lubricant Spray
- 3/8" Drive Torque Wrench
- 15mm Socket or Wrench
- 17mm Socket or Wrench
- Soap and Water Solution
- 3/8" Drive Ratchet

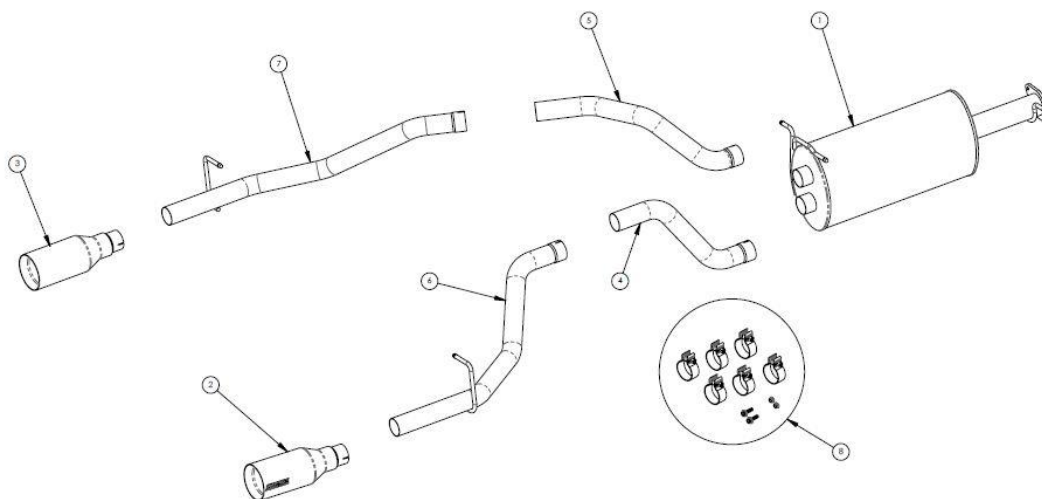
**Please take time to read and understand these installation instructions.**

CORSA recommends that the installation of this system be performed by a qualified service center or professional installer who has the necessary equipment, tools, and experienced personnel. However, if you decide to perform this installation yourself, the use of an additional person may be required.

**WARNING:** Never work on a hot exhaust system. Allow time for the vehicle to cool. Always wear eye protection when working under a vehicle.

CORSA Performance makes no representation or warranty, expressed or implied that its downpipe or header products and or components there-in comply with federal, state or local emission levels, noise levels, or safety standards or that any of their parts conform with the racing vehicles exemption, unless otherwise noted. The purchaser assumes all responsibility for such use and compliance.

This warranty does not extend to damaged or defect in the finish of a product or to any product, that in the opinion of CORSA Performance, has been misused, damaged by accident or negligence, altered or modified in any way, faulty installation or installed contrary to CORSA installation instructions, or repaired by an unauthorized service facility.



**BILL OF MATERIALS**

1.	18DR2032 (Muffler)	2.	18DR3010 (Passenger Tip)
3.	18DR3011 (Driver Tip)	4.	18DR4149 (Tailpipe Passenger Front)
5.	18DR4150 (Tailpipe Driver Front)	6.	18DR4153 (Tailpipe ASM passenger rear)
7.	18DR4154 (Tailpipe ASM Driver rear)	8.	18DR7070 (Hardware Kit)

**CAUTION:** Never work on a hot exhaust system. Allow the vehicle to cool for at least an hour and a half. Always wear eye protection when working under a vehicle. It is recommended to use cotton gloves in order to protect stainless steel surfaces from permanent grease and oil stains.

## REMOVAL INSTRUCTIONS

## FACTORY EXHAUST



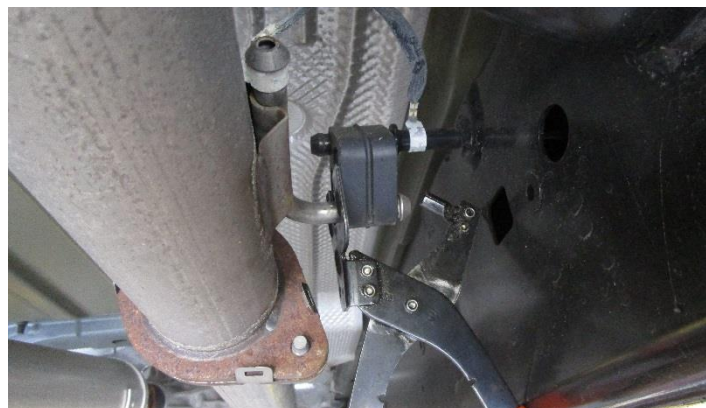
- 1.** Loosen and remove the two muffler flange bolts that secure the muffler inlet flange using a 16mm socket or wrench.



- 2.** Loosen the passenger side tailpipe clamp using a 15mm socket or wrench.



- 3.** Loosen both of the tip clamps and remove the factory tip assemblies using a 13mm socket or wrench.



- 4.** Remove hangers from the front of the muffler using grommet puller, or a similar device.

**NOTE:** The use of soap and water solution may aid in the removal and installation of hanger grommets.

Continued on Next Page . . .



## REMOVAL INSTRUCTIONS

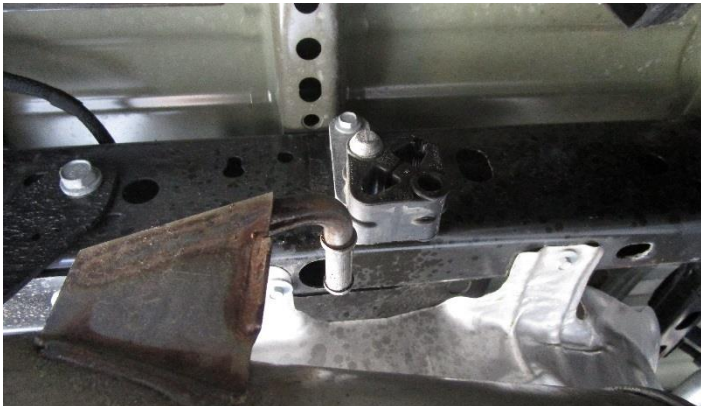
## FACTORY EXHAUST



- 5.** Remove both of the hangers from grommets at the back of the muffler using a grommet puller or similar device.



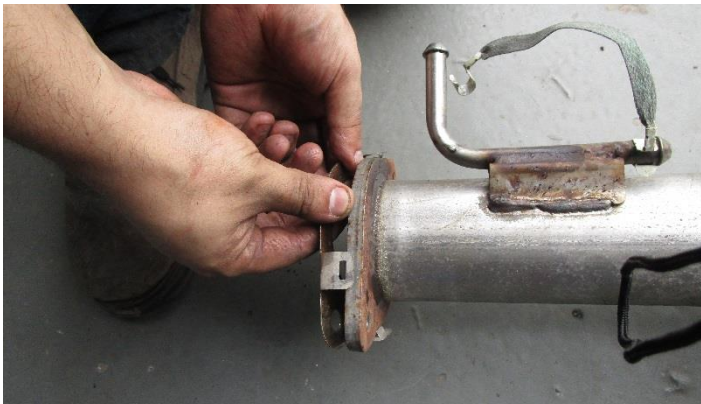
- 6.** Remove hangers on the tailpipe using a grommet puller, or similar device.



- 7.** Carefully remove the passenger side tailpipe from the grommet and remove it from the vehicle.



- 8.** Carefully guide the rest of the system towards the front of the vehicle and down to remove the system completely of the vehicle.



- 9.** Remove the factory gasket from the muffler and save it to reuse for the Corsa system.

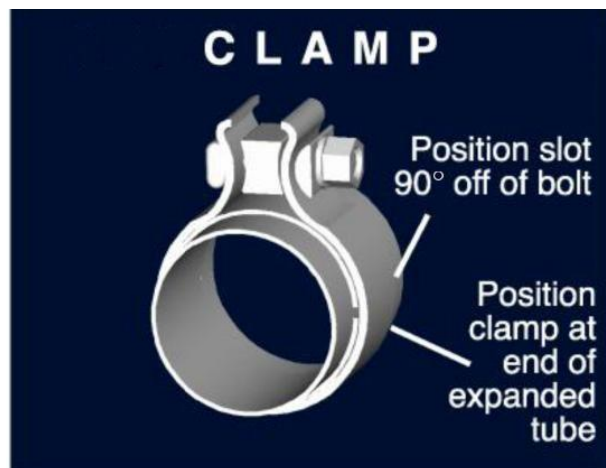
**Step 9** concludes the removal of the factory exhaust.

**WARNING! DO NOT SKIP THIS STEP!**

Apply the anti-seize lubricant (*supplied*) to the threads **ONLY** of all the clamps and flange bolts. Failure to follow this procedure can cause nuts to seize on clamps and potentially destroy threads.

After applying anti-seize lubricant, be sure to **thoroughly** clean your hands, as lubricant will tarnish stainless steel.

All clamps should be tightened using a properly calibrated Torque Wrench. Using an air impact gun will damage the clamp and reduce its ability to effectively seal the joint. It may also cause the joint to separate, thereby causing damage to your exhaust system and to your vehicle.



**NOTE:** Align all clamps so that the center of the clamp bolt is 90 degrees from the notch in the pipe.

**INSTALLATION INSTRUCTIONS**

CORSA EXHAUST



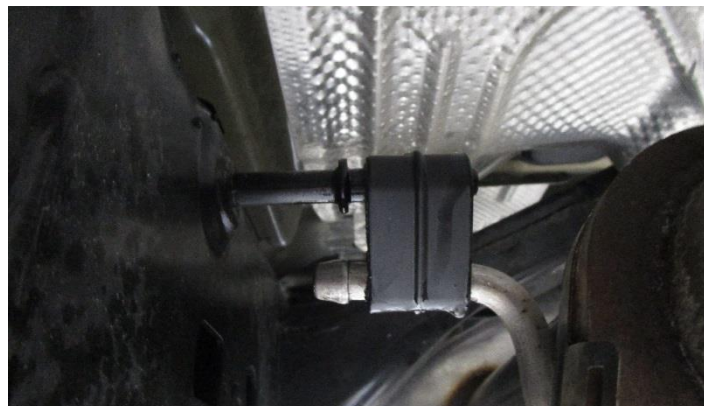
**1.** Place the gasket that was taken off from the factory exhaust system and place on the mid pipe flange.



**2.** Line up muffler as shown in the picture. Align the flange to the mating flange of the mid pipe.



**3.** Place rear muffler hangers in the factory grommets.



**4.** Place the front muffler hanger in the factory grommet.

Continued on Next Page ...

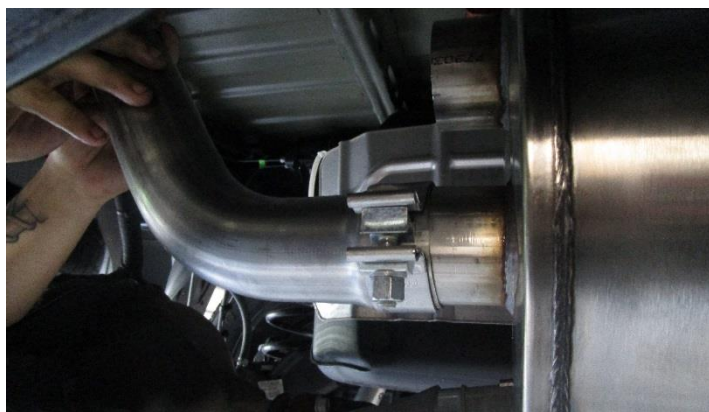


## INSTALLATION INSTRUCTIONS

CORSA EXHAUST



- 5.** Using a 17mm socket or wrench and a 15mm socket or wrench, secure the flange connection with the supplied hardware.



- 6.** Install a 2.5" clamp into the inlet of the passenger side front tailpipe as shown then insert the passenger side tailpipe on the bottom outlet of the muffler. Secure the clamp using a 15mm socket or wrench. Do not fully tighten at this time.



- 7.** Install a 2.5" clamp into the inlet of the driver's side front tailpipe then insert the driver's side front tailpipe on the top outlet of the muffler. Secure the clamp using a 15mm socket or wrench. Do not fully tighten at this time.



- 8.** Install a 2.5" clamp into the inlet of the passenger rear tailpipe and insert the passenger rear tailpipe into the passenger front tailpipe. Place the passenger side rear tailpipe hanger into the factory grommet as shown in **Step 10**. Secure the clamp using a 15mm socket or wrench. Do not fully tighten at this time.

Continued on Next Page . . .



**9.** Install a 2.5" clamp into the inlet of the driver's side rear tailpipe and insert the driver's side rear tailpipe into the driver's side front tailpipe. Place the driver's side rear tailpipe hanger into the factory grommet as shown in **Step 10**. Secure the clamp. Do not fully tighten at this time.



**10.** Placing the hangers on the driver, and passenger side rear tailpipe.

**NOTE:** The use of soap and water solution will make installing hangers on the grommets easier.



**11.** Place a 2.5" clamp into the inlet of the tips and Install tips on to both driver and passenger side of the vehicle. Adjust length and rotation to get the corsa etch on to the side of tips and to get the tip dept even between driver's and passenger side.



**12.** Using a 15mm socket or wrench, snug the tip clamps to leave room for adjustment.

**13.** Visually inspect the exhaust system for clearances, tip alignment, clamp orientation and position and make necessary adjustments at the flanges and the slip joints.

**14.** Starting at the front of the vehicle, tighten all the clamps to 45 ft/lbs and the flange hardware to 35 ft/lbs.

STEP 13 completes the installation of your Corsa Exhaust system.

# 19+ DODGE RAM 1500 5.7L HEMI

CAT-BACK EXHAUST, DUB w/ 5.0" Pro-Series Tips

Part #: 21035



**NOTE:** During cold weather start-ups, you may experience an exhaust sound that is deeper and louder in tone than usual. This is temporary and will diminish to normal levels once your engine has reached its normal operating temperature.

**NOTE:** Immediately following the installation of your exhaust system, you may experience a trace of smoke after initial start-up. DO NOT be alarmed. The smoke is caused by the burning of a small amount of forming oil residue used in the manufacturing process.

**NOTE:** It is strongly suggested that all clamps be checked and tightened after road testing the vehicle once the system has cooled.