

# 2018 JEEP WRANGLER JL



## IMPORTANT! WARRANTY AND INSTALLATION INSTRUCTIONS

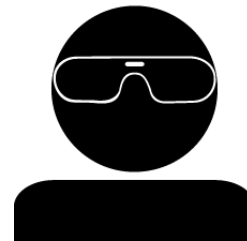


*Please Forward All Information to Consumer*

Be sure to review the enclosed instructions prior to beginning the installation process.



**NEVER** work on a hot exhaust system.  
Allow time for the vehicle to cool.



Always wear eye protection  
when working under a vehicle.

### INSTALL DIFFICULTY

The 'INSTALL DIFFICULTY' section is followed by five wrench icons: two yellow and three grey.

### RECOMMENDED TOOLS & SUPPLIES

- Safety Glasses
- Torque Wrench
- Grommet Puller
- 15mm Wrench or Deep Socket
- 13mm Wrench or Socket
- Soap and Water Solution

# 2018 JEEP WRANGLER JL

2.5" Axle-Back; Dual Rear Exit with 3.5" Tips (or Dumps)

Sport Part #: 21013 (Dumps), 21014 (Tips) Touring Part #: 21015 (Dumps), 21016 (Tips)



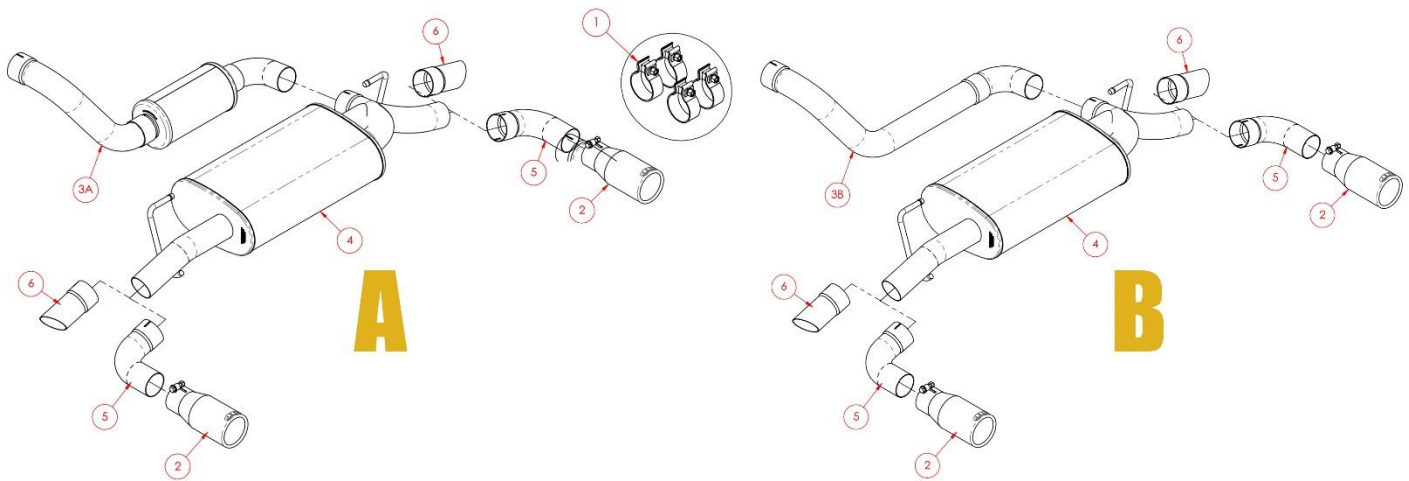
**Please take time to read and understand these installation instructions.**

dB by CORSA recommends that the installation of this system be performed by a qualified service center or professional installer who has the necessary equipment, tools, and experienced personnel. However, if you decide to perform this installation yourself, the use of an additional person may be required.

**WARNING:** Never work on a hot exhaust system. Allow time for the vehicle to cool. Always wear eye protection when working under a vehicle.

dB by CORSA Performance makes no representation or warranty, expressed or implied that its downpipe or header products and or components there-in comply with federal, state or local emission levels, noise levels, or safety standards or that any of their parts conform with the racing vehicles exemption, unless otherwise noted. The purchaser assumes all responsibility for such use and compliance.

This warranty does not extend to damaged or defect in the finish of a product or to any product, that in the opinion of dB by CORSA Performance, has been misused, damaged by accident or negligence, altered or modified in any way, faulty installation or installed contrary to dB by CORSA installation instructions, or repaired by an unauthorized service facility.



## BILL OF MATERIALS

1.	Hardware Kit (16CS7004)	2.	3.5" Tips (17CH3018) [Part #: 21014 & 21016]
3A.	Touring Front Muffler Assembly (28JL2000) [Part #: 21015 & 21016]	3B.	Sport Front Muffler Assembly (28JL4011) [Part #: 21013 & 21014]
4.	Rear Muffler Assembly (28JL2001)	5.	Tip Tube (28JL4004) [Part #: 21014 & 21016]
6.	Off Road Turn Down Dump Tip (28JL4010) [Part #: 21013 & 21015]		

# 2018 JEEP WRANGLER JL

2.5" Axle-Back; Dual Rear Exit with 3.5" Tips (or Dumps)

Sport Part #: 21013 (Dumps), 21014 (Tips) Touring Part #: 21015 (Dumps), 21016 (Tips)



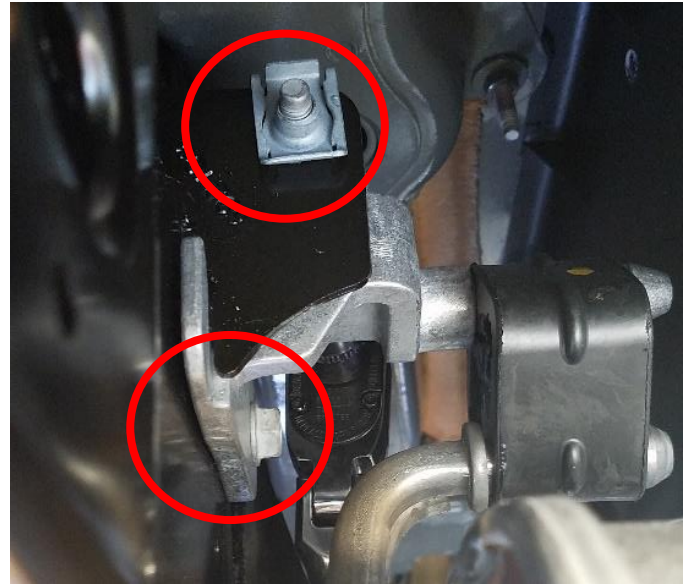
**CAUTION:** Never work on a hot exhaust system. Allow the vehicle to cool for at least an hour and a half. Always wear eye protection when working under a vehicle. It is recommended to use cotton gloves in order to protect stainless steel surfaces from permanent grease and oil stains.

## REMOVAL INSTRUCTIONS

## FACTORY EXHAUST



1. Loosen the factory clamp at the inlet end of the factory rear muffler assembly using a 15mm socket.



2. Remove the two bolts (circled) securing the hanger brackets on both sides of the muffler using a 13mm socket and wrench. Carefully remove the last bolt allowing the muffler to droop. Save the bolts for **Install Step 2**.



3. Remove the factory rear muffler from the vehicle by wiggling it back and forth while pulling. It may help to use a slight twist back and forth as well.



4. Using a grommet puller or similar device, remove both hanger grommets from the factory rear muffler assembly. Note the position and orientation of each hanger assembly before removal and save for **Install Step 2**. **NOTE:** The use of a soap and water solution may aid in removal of grommets.



# 2018 JEEP WRANGLER JL

2.5" Axle-Back; Dual Rear Exit with 3.5" Tips (or Dumps)

Sport Part #: 21013 (Dumps), 21014 (Tips) Touring Part #: 21015 (Dumps), 21016 (Tips)



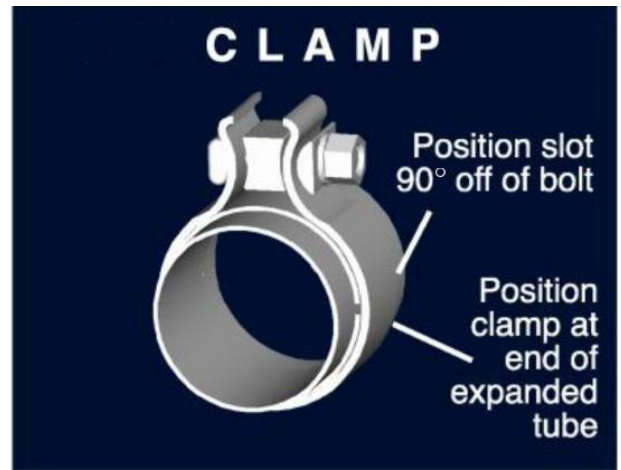
**Step 4** concludes the removal of the factory exhaust.

## WARNING! DO NOT SKIP THIS STEP!

Apply the anti-seize lubricant (*supplied*) to the threads **ONLY** of all the clamps and flange bolts. Failure to follow this procedure can cause nuts to seize on clamps and potentially destroy threads.

After applying anti-seize lubricant, be sure to **thoroughly** clean your hands, as lubricant will tarnish stainless steel.

All clamps should be tightened using a properly calibrated Torque Wrench. Using an air impact gun will damage the clamp and reduce its ability to effectively seal the joint. It may also cause the joint to separate, thereby causing damage to your exhaust system and to your vehicle.



**NOTE:** Align all clamps so that the center of the clamp bolt is 90 degrees from the notch in the pipe.

## INSTALLATION INSTRUCTIONS

dB by CORSA EXHAUST



1. Slide a clamp over the expanded end of Axle pipe assembly (Sport system) or the expanded end of the front muffler assembly (Touring system) so that the bolt is vertical with the nut towards the ground and towards the inside of the vehicle. Next slide the expanded inlet of the dB System over the factory tunnel section outlet with at least 1.25" of overlap at the connection. The notches of the pipe should be on the top and bottom of the pipe. Snug the clamp but do not tighten completely using a 15mm socket and ratchet.
2. Re-install the driver and passenger hanger assemblies back in to their respective positions. Using the hangers/grommets from **Removal Step 4** and the bolts from **Removal Step 2**.  
  
Slide a clamp onto the inlet side of the dB Rear Muffler Assembly with the hardware toward the passenger side (the Y side) and the nut on the bottom

Continued on Next Page . . .

# 2018 JEEP WRANGLER JL

2.5" Axle-Back; Dual Rear Exit with 3.5" Tips (or Dumps)

Sport Part #: 21013 (Dumps), 21014 (Tips) Touring Part #: 21015 (Dumps), 21016 (Tips)

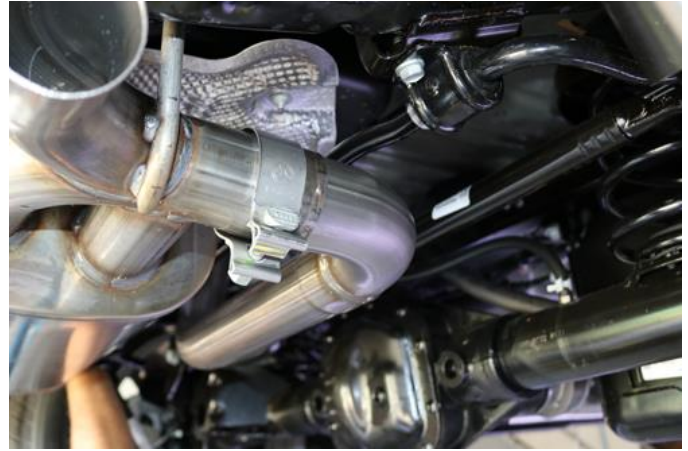


## INSTALLATION INSTRUCTIONS

dB by CORSA EXHAUST



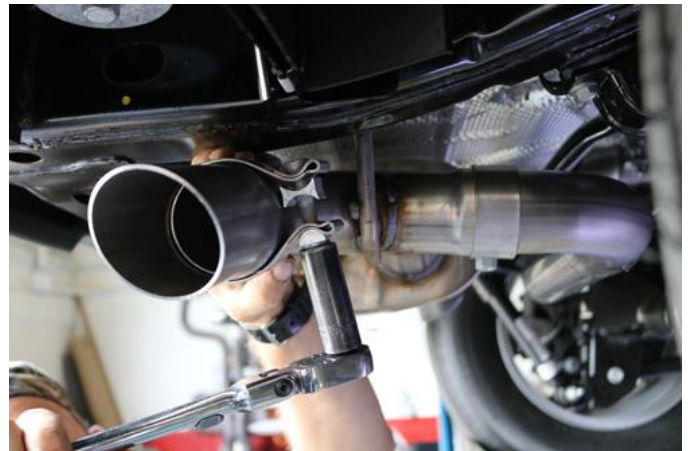
- 3.** The use of a second person is recommended. Slide the hangers into the factory grommets on both sides. Note: Use of a soap and water solution may aid in the installation of the hangers into the grommets.



- 4.** Slide the expanded inlet end of the rear muffler assembly onto the front section. Note: Make sure the clamp is on before you do this.



- 5.** Using a 15mm socket or wrench, snug the clamp before the muffler assembly, but do not tighten completely.



- 6.** If your kit uses dB 3.5" Tips, skip to step 7.

Install the dump by sliding the expanded and notched end of the dump over the outlet pipe of the muffler. Fasten with a clamp with the hardware toward the front of the vehicle with the nut facing downward. Use a 15mm socket or wrench to snug the clamp. Repeat for the other side. Skip Steps 7 and 8.

Continued on Next Page . . .



# 2018 JEEP WRANGLER JL

2.5" Axle-Back; Dual Rear Exit with 3.5" Tips (or Dumps)

Sport Part #: 21013 (Dumps), 21014 (Tips) Touring Part #: 21015 (Dumps), 21016 (Tips)



## INSTALLATION INSTRUCTIONS

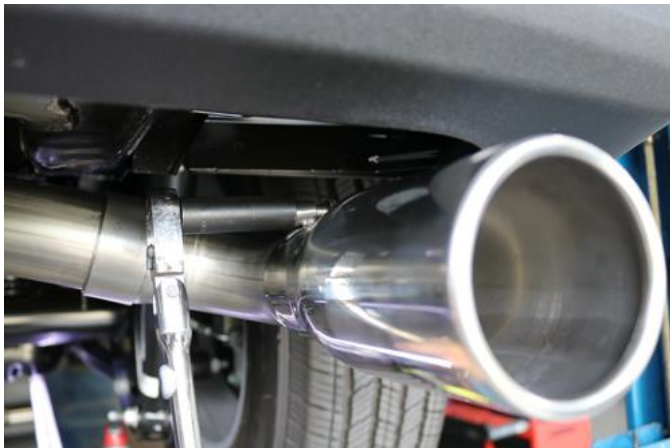
dB by CORSA EXHAUST



7. Place a clamp on the expanded end of the 90-degree elbows with the hardware toward the front of the vehicle with the nut down. Then slide that end over the outlet pipe of the muffler. Use a 15mm socket or wrench to snug the clamp. Repeat for the other side.



8. Slide the tips onto the tip elbow pipes with the etch centered on the top of each tip. Snug the bolt on the clamp using a 13mm socket or wrench.



9. Visually inspect the exhaust system position, tip alignment, clamp orientation, and exhaust pipe clearance. Make any necessary adjustments at the slip joints.

Start at the front of the system and work your way to the back of the vehicle tightening clamps using a 15mm socket and torque wrench.

Torque all clamps to 45 ft-lbs (61 N-m).

Hold the tips (if applicable) in the desired position and torque the integrated bolt clamps to 16-20 ft-lbs (61 N-m) using a 13mm socket.

**NOTE:** During cold weather start-ups, you may experience an exhaust sound that is deeper and louder in tone than usual. This is temporary and will diminish to normal levels once your engine has reached its normal operating temperature.

**NOTE:** Immediately following the installation of your exhaust system, you may experience a trace of smoke after initial start-up. DO NOT be alarmed. The smoke is caused by the burning of a small amount of forming oil residue used in the manufacturing process.

**NOTE:** It is strongly suggested that all clamps be checked and tightened after road testing the vehicle once the system has cooled.