

- 14144 Camaro Z28/Firebird Trans Am/Formula/WS6 (w/single cat) 1993-95 Dual Rear Exit w/ Twin Pro-Series 3.5" Tips
- 14146 Camaro Z28/Firebird Trans Am/Formula (w/single cat) 1993-95 Dual Rear Exit w/ Single Pro-Series 4.0" Tips
- 14145 Camaro Z28 & SS/Firebird Trans Am/Formula/WS6 (w/dual cats) 1995-97 Dual Rear Exit w/ Twin Pro-Series 3.5" Tips
- 14147 Camaro Z28 & SS/Firebird Trans Am/Formula/WS6 (w/dual cats) 1995-97 Dual Rear Exit w/ Single Pro-Series 4.0" Tips
- 14143 Camaro Z28 & SS/Firebird Trans Am/Formula/WS6 1998-02 Dual Rear Exit w/ Twin Pro-Series 3.5" Tips
- 14148 Camaro Z28 & SS/Firebird Trans Am/Formula/WS6 1998-02 Dual Rear Exit w/ Single Pro-Series 4.0" Tips

Please take time to read and understand these installation instructions.

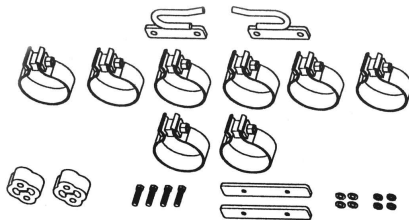
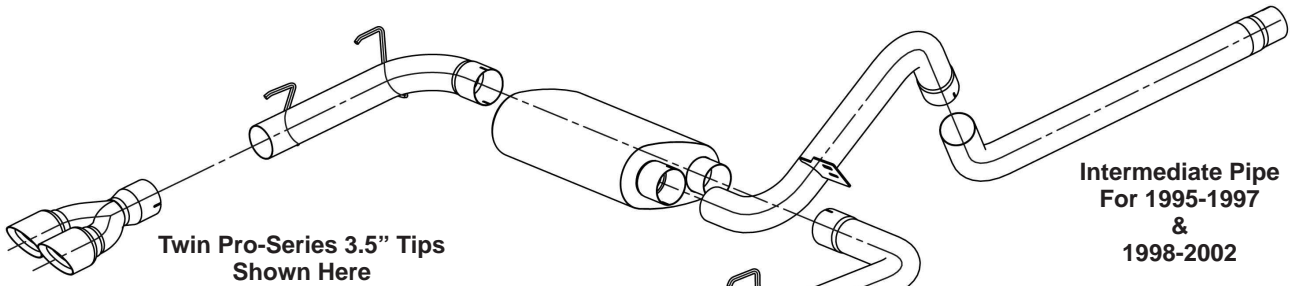
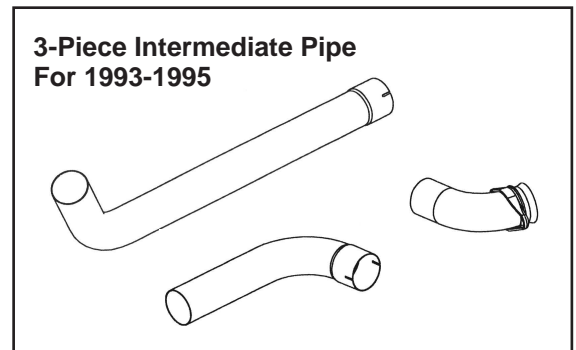
CORSA recommends that installation of this system be performed by a qualified service center or professional muffler installer who has the necessary equipment, tools and experienced personnel. However, if you decide to perform this install, the use of a hoist and an additional person will be required.

CAUTION: Never work on a hot exhaust system. Allow time for the vehicle to cool. Always wear eye protection when working under a vehicle.

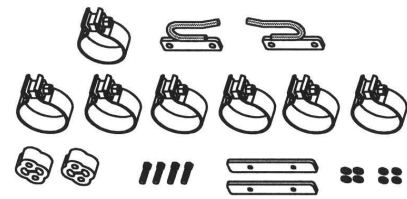
Please confirm that all parts are present before beginning the factory exhaust system removal and CORSA exhaust system installation.

Recommended Tools:

13MM deep socket, 15MM deep socket, Socket wrench extension, Saw or chain-style pipe cutter, Torque wrench



**Hardware Kit
 For 1993-1995 Models
 (Part No.'s 14144 & 14146)**



**Hardware Kit
 For 1995-2002 Models
 (Part No.'s 14143, 14145, 14147 & 14148)**

- 14144 Camaro Z28/Firebird Trans Am/Formula/WS6 (w/single cat) 1993-95 Dual Rear Exit w/ Twin Pro-Series 3.5" Tips
14146 Camaro Z28/Firebird Trans Am/Formula (w/single cat) 1993-95 Dual Rear Exit w/ Single Pro-Series 4.0" Tips
14145 Camaro Z28 & SS/Firebird Trans Am/Formula/WS6 (w/dual cats) 1995-97 Dual Rear Exit w/ Twin Pro-Series 3.5" Tips
14147 Camaro Z28 & SS/Firebird Trans Am/Formula/WS6 (w/dual cats) 1995-97 Dual Rear Exit w/ Single Pro-Series 4.0" Tips
14143 Camaro Z28 & SS/Firebird Trans Am/Formula/WS6 1998-02 Dual Rear Exit w/ Twin Pro-Series 3.5" Tips
14148 Camaro Z28 & SS/Firebird Trans Am/Formula/WS6 1998-02 Dual Rear Exit w/ Single Pro-Series 4.0" Tips

EXHAUST SYSTEM REMOVAL:

- 1) Cut the Intermediate Pipe near the axle using a saw or chain-style pipe cutter (**See Fig. A**).
- 2) Next remove the exhaust pipe to Y-Pipe clamp using a 15MM deep socket or wrench (**See Fig. B**).
- 3) Using a 13MM deep socket or wrench, unbolt the PASSENGER SIDE muffler from the hanger bracket (be sure to save the mounting bolt) (**See Fig. C**).
- 4) Remove the tailpipe from the DRIVER SIDE hanger. Be sure to keep the factory installed hanger and rubber insulator in place (**See Fig. D**).
- 4A) NOTE: On 1993-1997 models remove bolt holding DRIVER SIDE Tail Pipe to Frame hanger. Be sure to keep bolt as it will be needed for the final installation.
- 5) Now remove muffler by tilting it down in order to provide enough clearance to maneuver the still attached inlet pipe over the axle.



FIG. A



FIG. B



FIG. C



FIG. D

EXHAUST SYSTEM INSTALLATION:

INSTALLATION NOTE:

Be sure to apply the anti-seize lubricant that has been provided to all bolts, fasteners and clamps. A pouch with anti-seize lubricant is included with the hardware kit. Apply the supplied anti-seize lubricant to the threads **ONLY** of all TORCA band clamps. Failure to follow this procedure can cause the nuts to seize on clamps and potentially damage threads. **WARNING:** Be sure to thoroughly clean hands after use. Anti-seize lubricant will tarnish stainless steel parts.



14144 Camaro Z28/Firebird Trans Am/Formula/WS6 (w/single cat) 1993-95 Dual Rear Exit w/ Twin Pro-Series 3.5" Tips

14146 Camaro Z28/Firebird Trans Am/Formula (w/single cat) 1993-95 Dual Rear Exit w/ Single Pro-Series 4.0" Tips

14145 Camaro Z28 & SS/Firebird Trans Am/Formula/WS6 (w/dual cats) 1995-97 Dual Rear Exit w/ Twin Pro-Series 3.5" Tips

14147 Camaro Z28 & SS/Firebird Trans Am/Formula/WS6 (w/dual cats) 1995-97 Dual Rear Exit w/ Single Pro-Series 4.0" Tips

14143 Camaro Z28 & SS/Firebird Trans Am/Formula/WS6 1998-02 Dual Rear Exit w/ Twin Pro-Series 3.5" Tips

14148 Camaro Z28 & SS/Firebird Trans Am/Formula/WS6 1998-02 Dual Rear Exit w/ Single Pro-Series 4.0" Tips

- 1) For 1998-2002 models: Locate the Intermediate Pipe and the supplied 2-3/4" TORCA clamp (See Fig. F). Slide the clamp over the "slotted", or expanded, end of the pipe and slide the Intermediate Pipe over the Y-Pipe outlet. DO NOT TIGHTEN CLAMP.

- 1A) NOTE: For 1993-1997 models: Locate the three (3) front pipes (Front S-Pipe w/2-bolt flange, Rear S-Pipe & Intermediate Pipe). Position S-Pipe flange over Y-Pipe flange and hand tighten using factory supplied bolts.

Slide a 3-inch TORCA clamp over expanded end of Rear S-Pipe and fit over Front S-Pipe outlet and hand tighten.

Slide a 3-inch TORCA clamp over expanded end of Intermediate Pipe and fit over Rear S-Pipe outlet and hand tighten.

- 2) Locate PASSENGER SIDE Over-Axle Pipe (See Fig. G) and slip a 3-inch TORCA clamp over the expanded end of the pipe. Next, place in position over the axle housing (See Fig. H). Next slide the Intermediate Pipe into the expanded end of the Over-Axle Pipe. Snug fit the clamp but DO NOT TIGHTEN.

- 3) Position PASSENGER SIDE Over-Axle Pipe mounting bracket (welded to the pipe) to the frame hanger. Using existing bolt (nut is fixed to the hanger bracket), fasten accordingly. DO NOT TIGHTEN BOLT (See Fig. I & J).

- 4) Locate the supplied threaded Mounting Plates, bolts, nuts and lock washers, hangers and rubber insulators (See Fig. K).

NOTE: There are two holes (one larger than the other) in the bottom of the frame rail, near the bumper, on both the driver and passenger side. Located on the inside of each frame rail is a square-shaped hole.

- 5) After locating each of these frame holes, insert one of the threaded Mounting Plates in the square-shaped hole on the DRIVER SIDE and, laying it down flat inside the frame, position it so the mounting plate threaded holes are aligned and visible through the large and small frame holes (See Fig. L & M).



FIG. F



FIG. G



FIG. H



FIG. I



FIG. J



FIG. K



FIG. L



FIG. M

- 14144 Camaro Z28/Firebird Trans Am/Formula/WS6 (w/single cat) 1993-95 Dual Rear Exit w/ Twin Pro-Series 3.5" Tips
- 14146 Camaro Z28/Firebird Trans Am/Formula (w/single cat) 1993-95 Dual Rear Exit w/ Single Pro-Series 4.0" Tips
- 14145 Camaro Z28 & SS/Firebird Trans Am/Formula/WS6 (w/dual cats) 1995-97 Dual Rear Exit w/ Twin Pro-Series 3.5" Tips
- 14147 Camaro Z28 & SS/Firebird Trans Am/Formula/WS6 (w/dual cats) 1995-97 Dual Rear Exit w/ Single Pro-Series 4.0" Tips
- 14143 Camaro Z28 & SS/Firebird Trans Am/Formula/WS6 1998-02 Dual Rear Exit w/ Twin Pro-Series 3.5" Tips
- 14148 Camaro Z28 & SS/Firebird Trans Am/Formula/WS6 1998-02 Dual Rear Exit w/ Single Pro-Series 4.0" Tips

- 6) Repeat process on the other side.
- 7) Next locate the supplied Wire Loop, "U" shaped hanger, MARKED DRIVER SIDE-TOP. Position it so the "U" shape side faces inward (towards the passenger side) and the open end faces the front of the vehicle. NOTE: The angled end of each wire loop should be facing up once mounted. Use supplied bolts and lock washers and mount to the threaded Mounting Plate already positioned in the frame and hand tighten-DO NOT TIGHTEN AT THIS TIME (See Fig. N).
- 8) For PASSENGER SIDE position Wire Loop so the "U" shape side faces inward and the open end faces the front of the vehicle. Use supplied bolts and lock washers and mount to the threaded mounting plate already positioned in the frame-DO NOT TIGHTEN AT THIS TIME (See Fig. O).
- 9) Slide supplied rubber insulators on each "U" shaped hanger just installed. (See Fig. P).
- 10) Next position Muffler with muffler case WELD SEAM FACING FRONT OF VEHICLE-DRAIN HOLE FACING DOWN AND PARALLEL TO THE HEAT SHIELD (see Fig. Q). Inlet / outlet will be on passenger side. Slip a 3-inch TORCA clamp over inlet (passenger side). While holding muffler in position under car, slide the Over-Axle Pipe into muffler inlet and hand tighten. DO NOT TIGHTEN CLAMP (See Fig. R).
- 11) Locate Tail Pipe labeled DRIVERS SIDE and, with a 3-inch TORCA clamp in position over expanded end (See Fig. S-Pipe with two (2) hangers), insert the Tail Pipe hangers into respective rubber insulators (DRIVERS SIDE) (See Fig. T). Then slide Tail Pipe OVER muffler outlet. DO NOT TIGHTEN CLAMP (See Fig. U).



FIG. N



FIG. O



FIG. P

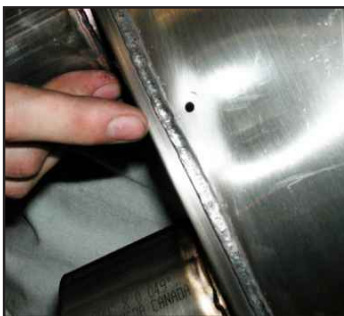


FIG. Q



FIG. R



FIG. S



FIG. T

- 14144 Camaro Z28/Firebird Trans Am/Formula/WS6 (w/single cat) 1993-95 Dual Rear Exit w/ Twin Pro-Series 3.5" Tips
- 14146 Camaro Z28/Firebird Trans Am/Formula (w/single cat) 1993-95 Dual Rear Exit w/ Single Pro-Series 4.0" Tips
- 14145 Camaro Z28 & SS/Firebird Trans Am/Formula/WS6 (w/dual cats) 1995-97 Dual Rear Exit w/ Twin Pro-Series 3.5" Tips
- 14147 Camaro Z28 & SS/Firebird Trans Am/Formula/WS6 (w/dual cats) 1995-97 Dual Rear Exit w/ Single Pro-Series 4.0" Tips
- 14143 Camaro Z28 & SS/Firebird Trans Am/Formula/WS6 1998-02 Dual Rear Exit w/ Twin Pro-Series 3.5" Tips
- 14148 Camaro Z28 & SS/Firebird Trans Am/Formula/WS6 1998-02 Dual Rear Exit w/ Single Pro-Series 4.0" Tips

11A) NOTE: For 1993-1997 models: Locate Tail Pipe labeled DRIVERS SIDE and, with a 3-inch TORCA clamp in position over expanded end, insert the tail pipe hanger into respective rubber insulator and, using factory bolt, attach Tail Pipe hanger tab to frame (see include drawing). Next, slide Tail Pipe over Muffler outlet. DO NOT TIGHTEN CLAMP (See Fig. U).



FIG. U

12) Repeat the same steps for the PASSENGER SIDE Tail Pipe (Labeled) by sliding the one Tail Pipe hanger into frame hanger rubber insulator. (See Fig. V).



FIG. V

13) At this point, check for chassis clearance especially clearance of the Over-Axle Pipe near the heat shield and panhard bar. Make adjustments as needed. Also, check PASSENGER SIDE tailpipe hanger (near bottom of spare tire well) and make sure there is at least 3/4" clearance between the wire loop tailpipe hanger and the spare tire well.

If additional clearance is required, adjust muffler laterally, towards the DRIVER SIDE, by slightly separating the Over-Axle Pipe slip joint into the muffler. Only hand-tighten TORCA clamp.

PLEASE NOTE: There is approximately 2" of 6-way system adjustment via forward, backward, left and right plus rotational up and down until system is torqued into its final position.

14) Now tighten both Wire Loop, "U" shaped hangers, Intermediate Pipe at Y-Pipe and Over-Axle Pipe to Intermediate Pipe and Muffler inlet and outlet pipe clamps-**TORQUE SETTING: 45 FT LBS.** The position of the Muffler should appear as in Fig. W.



FIG. W

15) Next, slide 3-inch TORCA clamp over each Tail Pipe (See Fig. X) with "bolt & nut" side of each clamp facing toward the center of vehicle with nut facing down. Slide Exhaust Tips over Tail Pipe on DRIVER and PASSENGER sides. Hand tighten only! (See Fig. Y-Twin Pro-Series Tip Shown).

NOTE 1: At the muffler, maintain a clearance of 1/2" between the inlet Over-Axle Pipe and the outlet Tail Pipe.

NOTE 2: The Pro-Series 3.5 feature staggered tubes for each assembly-one tube is longer than the other. The longer of the two for each assembly should be positioned toward the inside of the vehicle.

16) Check once again for clearance and make final adjustments.



FIG. X



FIG. Y

- 14144 Camaro Z28/Firebird Trans Am/Formula/WS6 (w/single cat) 1993-95 Dual Rear Exit w/ Twin Pro-Series 3.5" Tips
- 14146 Camaro Z28/Firebird Trans Am/Formula (w/single cat) 1993-95 Dual Rear Exit w/ Single Pro-Series 4.0" Tips
- 14145 Camaro Z28 & SS/Firebird Trans Am/Formula/WS6 (w/dual cats) 1995-97 Dual Rear Exit w/ Twin Pro-Series 3.5" Tips
- 14147 Camaro Z28 & SS/Firebird Trans Am/Formula/WS6 (w/dual cats) 1995-97 Dual Rear Exit w/ Single Pro-Series 4.0" Tips
- 14143 Camaro Z28 & SS/Firebird Trans Am/Formula/WS6 1998-02 Dual Rear Exit w/ Twin Pro-Series 3.5" Tips
- 14148 Camaro Z28 & SS/Firebird Trans Am/Formula/WS6 1998-02 Dual Rear Exit w/ Single Pro-Series 4.0" Tips

17) Once final adjustments have been made, tighten Tail Pipe clamps and re-check all other clamps.

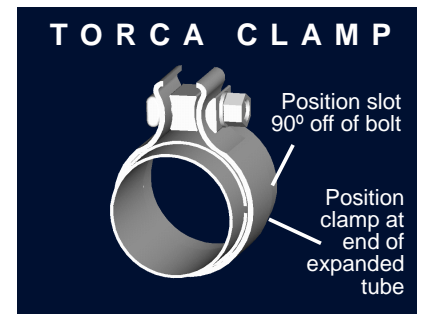
NOTE: For 1993-1997 models: Tighten Tail Pipe Hanger bolt on DRIVER SIDE. **TORQUE SETTING: 45 FT LBS.**

18) Lower car to ground and make final alignment to Muffler Tip alignment, then tighten clamps.

19) It is **STRONGLY RECOMMENDED** that all clamps be checked and tightened if necessary after road testing the vehicle and after system has cooled.

NOTE: During cold weather start-ups, you may experience an exhaust sound that is deeper and louder in tone than usual. This is temporary and will diminish to normal levels once your engine has reached its normal operating temperature.

NOTE: Immediately following the installation of your CORSA exhaust system, you may experience a trace of smoke after initial start-up. DO NOT be alarmed. The smoke is caused by the burning of a small amount of forming oil residue used in the manufacturing process.



Twin Pro-Series Tips Shown