



IMPORTANT WARRANTY & INSTALLATION
INSTRUCTIONS ATTACHED

*Please Forward All Attached Information to Consumer
Warranty Not Valid Unless Returned to CORSA Exhaust*



Please take time to read and understand these installation instructions.

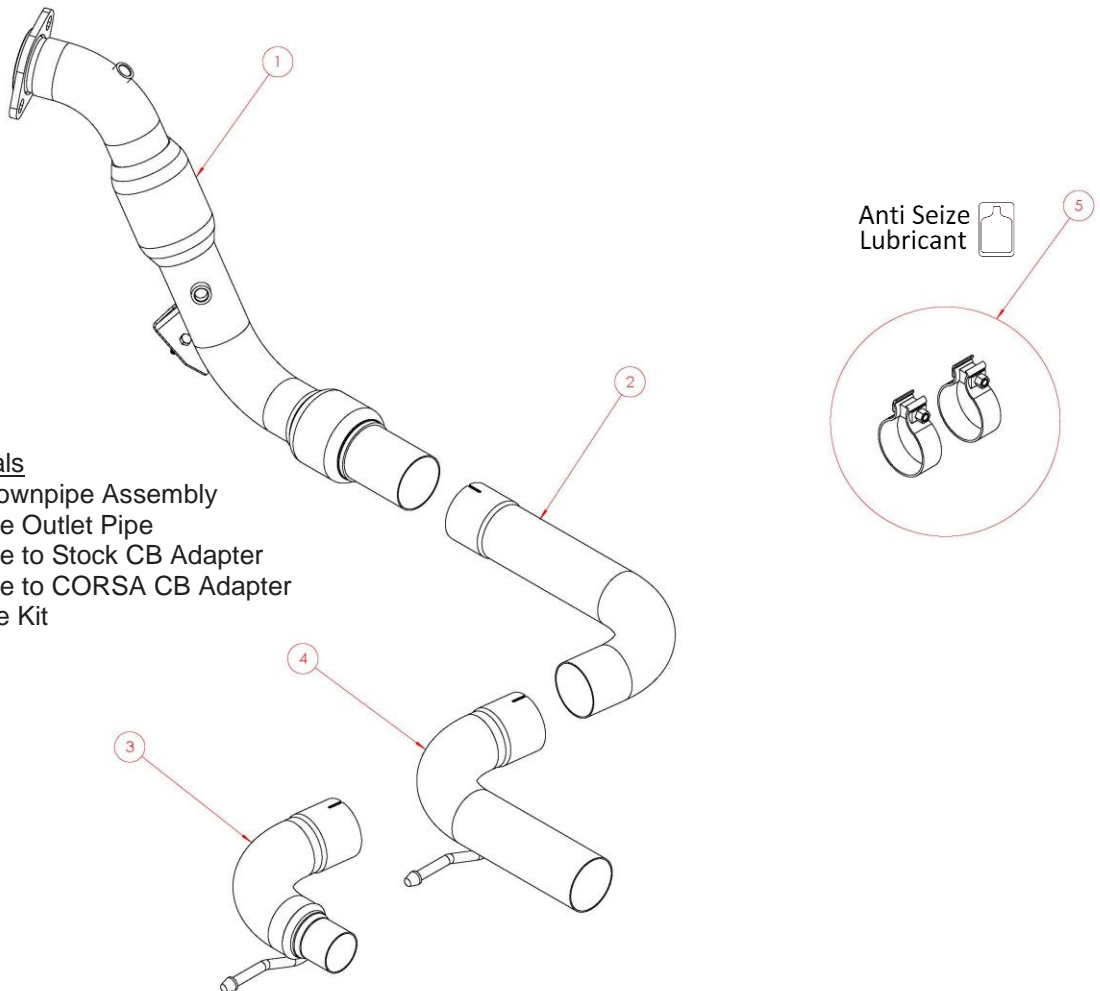
CORSA recommends that the installation of this system be performed by a qualified service center or professional muffler installer who has the necessary equipment, tools and experienced personnel. However, if you decide to perform this install, the use of a hoist and an additional person will be required.

CAUTION: Never work on a hot exhaust system. Allow time for the vehicle to cool. Always wear eye protection when working under a vehicle.

Recommended Tools:

- 3/8" drive ratchet
- 3/8" drive torque wrench
- 3/8" drive 13mm socket
- 3/8" drive 15mm deep socket
- Grommet pullers
- Soap and water solution
- 22mm O2 wrench
- Safety glasses

Please confirm that all parts are present before beginning the factory exhaust system removal and CORSA exhaust system installation.



Bill of Materials

1. 20MU4126 – Upper Downpipe Assembly
2. 20MU4130 – Downpipe Outlet Pipe
3. 20MU4132 – Downpipe to Stock CB Adapter
4. 20MU4134 – Downpipe to CORSA CB Adapter
5. 34GR7010 – Hardware Kit

Factory Downpipe Removal:

1. Open the hood, and unplug the front O2 sensor from the vehicle harness. The front O2 sensor is located just before the factory catalyst and the plug can be found by tracing the wire from the sensor. Pull down on the lower plug while pushing the release clip on the upper plug to separate. **(Fig. A)** The upper plug is mounted to a bracket and will not move unless removed separately. Using a 22mm oxygen sensor wrench, remove the front oxygen sensor and place it in a safe location as it will be reused during the CORSA Performance downpipe installation. **(Fig. B)**
2. Using a ratchet and 15mm deep socket, loosen the two nuts holding the downpipe flange to the turbo outlet. **(Fig. C)** It is easier to reach and loosen the nuts from with the engine bay rather than from below. Do not fully remove the nuts at this time.
3. From beneath the vehicle, loosen the two nuts on the cat-back sleeve clamp using a 3/8" drive ratchet and 15mm deep socket. **(Fig. D)** Using the 3/8" drive ratchet and a 13mm socket, remove the two bolts holding the front driver and passenger side grommet assemblies located at the rear of the rear suspension sub-frame. **(Fig. E)** Push up slightly on the exhaust and slide the grommet assemblies rearward. Slide the complete exhaust system rearward to free it from the cat-back sleeve clamp and place a jack stand or similar device under the exhaust inlet for support. Place the bolts in a safe location to be reused during the CORSA downpipe installation. **NOTE:** Spraying the rear hanger grommets with a soap and water solution will ease sliding the exhaust system rearward.

NOTE: For additional room during the CORSA downpipe installation, the complete exhaust system can be removed. Once the rear hanger grommet assemblies are unbolted, the complete exhaust system can be removed by sliding it rearward to free it from the cat-back sleeve clamp; then sliding the exhaust system forward to free the rear muffler hangers located above the exhaust tip outlets.

NOTE: If a CORSA Performance exhaust system is already installed on the vehicle. Follow step #4 and continue on. If a stock exhaust is installed on the vehicle, skip step #4 and continue on to step #5.

4. Loosen the clamp connecting the cat-back adapter to the tunnel muffler inlet pipe using a ratchet and 15mm deep socket. Remove the adapter as it will not be necessary to connect the CORSA Performance downpipe to the CORSA Performance cat-back system.
5. Using a 22mm oxygen sensor wrench, remove the rear oxygen sensor located directly in the center of the factory catalyst. **(Fig. F)**
6. Using a 3/8" drive ratchet and 13mm socket, remove the two bolts holding the downpipe mounting bracket to the transmission case. **(Fig. G)** Place the bolts in a safe location to be reused during the downpipe installation.
7. Using grommet pullers or a similar device remove the hanger from the hanger grommet located just before the cat-back sleeve clamp. **(Fig. H)** **NOTE:** The use of a soap and water solution may aid in the removal of hanger grommets.

8. Remove the two nuts, loosened in step #2, from the downpipe flange and slide the flange off the turbo outlet studs. The downpipe is now free from the vehicle. **(Fig. I)** Remove the factory sleeve clamp from the downpipe outlet and place in a safe location as it will be required if connecting the CORSA downpipe to a factory cat-back.

9. Using a 3/8" drive ratchet and a 13mm socket, remove the two nuts securing the downpipe mounting bracket to the factory downpipe. **(Fig. J)** Remove the oval washer, the two sleeve bushings, and the bracket; place in a safe location as these parts will be reused during the CORSA Performance downpipe installation process. **(Fig. K & L)**

Removal Pictures



Fig. A



Fig. B



Fig. C

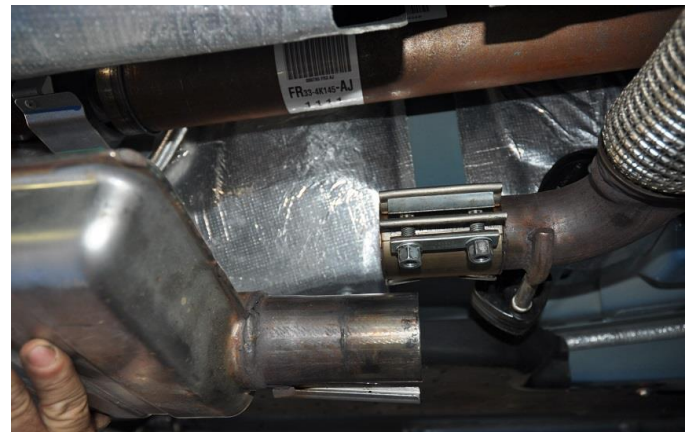


Fig. D



Fig. E



Fig. F

Removal Pictures



Fig. G



Fig. H



Fig. I



Fig. J



Fig. K

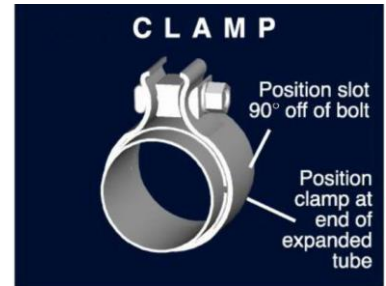


Fig. L

Installation of CORSA Exhaust System:

NOTE: Apply the anti-seize lubricant (supplied) to the threads **ONLY** of all the clamps and flange bolts. Failure to follow this procedure can cause nuts to seize on clamps and potentially destroy threads. After applying anti-seize lubricant, be sure to thoroughly clean your hands, as lubricant will tarnish stainless steel. All clamps should be tightened using a properly calibrated Torque Wrench. Using an air impact gun will damage the clamp and reduce its ability to effectively seal the joint. It may also cause the joint to separate, thereby causing damage to your exhaust system and to your vehicle.

NOTE: Align all clamps so that the center of the clamp bolt is 90 degrees from the notch in the pipe. (See Fig. CLAMP)



1. Remove all downpipe assembly components from the shipping boxes, including clamps and hardware.
2. Locate the upper downpipe assembly along with the two nuts removed from step #8 of the factory downpipe removal process. Confirm that the stock donut gasket at the turbo outlet flange is undamaged and correctly fitted within the turbo outlet. **(Fig. M)** Place the flared inlet end over the downpipe gasket and slide the downpipe flange over the two studs on the turbo outlet. Install and snug the factory nuts using a 15mm wrench. **(Fig. N)** Do not fully tighten at this step.
3. Locate the stock downpipe mounting bracket along with the hardware removed from step #9 of the stock downpipe removal process. Position the large slot on the mounting bracket around the studs on the CORSA downpipe. Bolt the mounting bracket to the transmission housing using the factory bolts, removed during step #6 of the stock downpipe removal process, a 3/8" drive ratchet, and a 13mm socket. **(Fig. O)** Install the oval washer along with the two bushings over the CORSA downpipe studs and tighten using the factory nuts, 3/8" drive ratchet, and a 13mm socket. **(Fig. P)**
4. Locate the downpipe outlet pipe and one 3" clamp. Install the clamp on the expanded inlet end of the downpipe outlet pipe so that the bolt is vertical with the nut towards the ground and the bolt towards the center of the vehicle. Slide the downpipe outlet pipe over the outlet end of the upper downpipe assembly. Position the pipe so that it is parallel with the ground and favoring the passenger side of the vehicle cavity. Tighten the clamp using the ratchet and 15mm deep socket until the pipe is snug on the upper downpipe assembly. **(Fig. Q)**

NOTE: If connecting to a stock cat-back exhaust system, use the downpipe to stock cat-back adapter (BOM #3) for this next step. If connecting the downpipe to a CORSA Performance exhaust cat-back, locate and use the downpipe to CORSA cat-back adapter (BOM #4).

5. Locate one of the downpipe adapters, as mentioned above and pertaining to your cat-back exhaust, along with one 3" clamp. Install the clamp on the expanded inlet end of the downpipe adapter so that the bolt is vertical with the nut towards the ground and the bolt towards the rear of the vehicle. Insert the hanger into the hanger grommet located on the driver side of the chassis. **(Fig. R)** Slide the expanded inlet end of the downpipe adapter over the outlet end of the downpipe outlet pipe. Tighten the clamp using the ratchet and a 15mm deep socket until the adapter is snug on the downpipe outlet pipe. **(Fig. S Stock Adapter or Fig. T CORSA Adapter)**

NOTE: The use of a soap and water solution may aid in the installation of hanger grommets.

6. Using a 22mm O2 sensor wrench, install the rear O2 sensor onto the CORSA Performance downpipe. **(Fig. U)**

NOTE: If a stock cat-back is to be installed on the vehicle follow steps 7-8. If a CORSA Performance exhaust system is already installed, follow steps 9-10.

7. Locate the factory sleeve clamp removed during step #7 of the stock downpipe removal process. Slide the sleeve clamp over the downpipe adapter outlet. **(Fig. V)** Position the sleeve clamp so that the bolt is vertical with the nut towards the ground and the bolt towards the passenger side of the vehicle.
8. Slide the stock exhaust system forward and insert the exhaust inlet pipe into the sleeve clamp. Snug both nuts on the sleeve clamp using a ratchet and 15mm deep socket. **(Fig. W)**

NOTE: If installing a CORSA Performance exhaust following the downpipe installation, the cat-back adapter will not be used as the CORSA Downpipe to CORSA cat-back adapter is designed to connect directly to the tunnel muffler inlet pipe preserving a 3" through designing throughout the entire system.

9. Locate the 3" clamp from the removal of the cat-back adapter during step #4 of the factory downpipe removal process. Install the clamp over the expanded end of the tunnel muffler inlet so that the bolt is vertical with the nut towards the ground and the bolt towards the passenger side of the vehicle. Slide the CORSA Performance exhaust system forward and insert the tunnel muffler inlet pipe over the downpipe adapter outlet. Tighten the clamp using a ratchet and 15mm deep socket so that the tunnel muffler is snug over the downpipe adapter. **(Fig. X)**
10. Locate the two bolts removed from step #3 of the factory downpipe removal process. Using a ratchet and 13mm socket, bolt the axle pipe hangers to the rear suspension sub-frame. **(Fig. Y)**

INSTALLATION INSTRUCTIONS CONTINUED ON NEXT PAGE



11. Adjust the downpipe and cat-back accordingly. The downpipe can be adjusted by loosening the two nuts at the flange, the two nuts at the downpipe mounting bracket, and the two bolts securing the downpipe mounting bracket to the transmission case. Once the downpipe is in the desired position fully tighten all the bolts. Adjust the adapter overlap on the stock sleeve clamp if applicable, the rear muffler depth and rotation, along with the tip depth and rotation, so that the tips are centered in the bumper valence. Rotate the tips so that the CORSA etch is on top with the tip rotation matching the slanted tip cut out profile of the valence. Check the position of all hangers to make sure they are properly seated within their corresponding grommets. Check clearances between the system components and chassis. At this time, tighten all clamps to 45ft-lbs using the torque wrench and 15mm socket. **(Fig. Z)**

NOTE: During cold weather start-ups, you may experience an exhaust sound that is deeper and louder in tone than usual. This is temporary and will diminish to normal levels once your engine has reached its normal operating temperature.

NOTE: Immediately following the installation of your exhaust system, you may experience a trace of smoke after initial start-up. DO NOT be alarmed. The smoke is caused by the burning of a small amount of forming oil residue used in the manufacturing process.

INSTALLATION PICTURES ON NEXT PAGE 

CORSA Installation Pictures



Fig. M



Fig. N



Fig. O

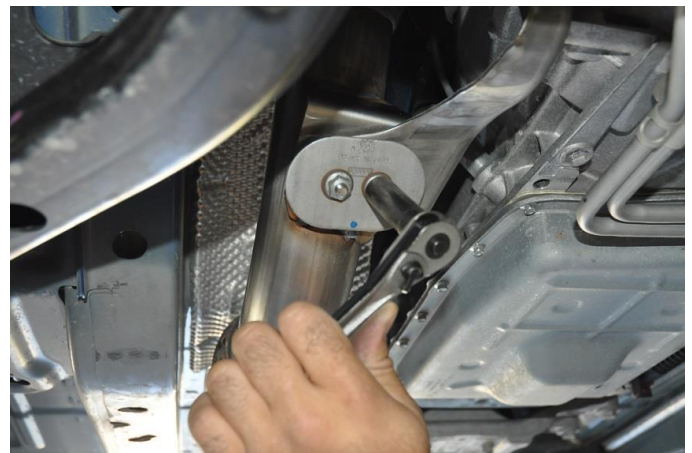


Fig. P



Fig. Q



Fig. R

CORSA Installation Pictures



Fig. S



Fig. T



Fig. U



Fig. V



Fig. W



Fig. X

CORSA Installation Pictures



Fig. Y



Fig. Z