

Continental

PURE CONTACT™

with  **ECOPLUS+**
TECHNOLOGY



The Premium Passenger Car, Minivan & CUV All-Season Tire

A skillful balance of luxury and all-season performance designed for long wear, a comfortable ride, and best-in-class wet braking.

Rim Diameter:

15" - 20"

Aspect Ratio:

40 - 65

Speed Rating:

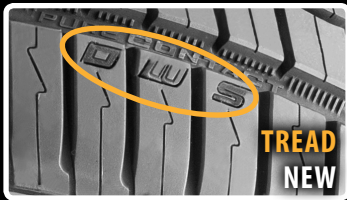
H, V

PURECONTACT

FEATURES + BENEFITS



- ▶ **EXCELLENT WET BRAKING AND LONG WEAR:**
EcoPlus Technology's +Silane provides an optimum balance of exceptional wet grip and extended tread life.
- ▶ **LOWER ROLLING RESISTANCE FOR IMPROVED FUEL ECONOMY:**
EcoPlus Technology reduces rolling resistance with Tg-F polymers, providing improved fuel efficiency and lower CO₂ emissions.
- ▶ **TUNED PERFORMANCE INDICATORS:**
Indicators disappear when tire is no longer tuned for optimal performance in either dry, wet, or light snow conditions.



- ▶ **PERFORMANCE IN DRY CONDITIONS:**
Strong outer shoulder and chamfered tread blocks maximize road contact.

UTQG	TREAD	TRACTION	TEMPERATURE
ALL SIZES	700	A	A

Total Confidence Plan

In addition to performance, the PureContact™ provides an extra measure of confidence because it is backed by the Total Confidence Plan which provides.



Learn more about car and truck tires on our website.