

Continental 
The Future in Motion



LSR1 - 16"

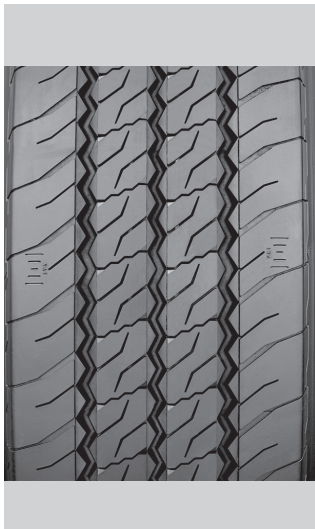
Steel Casing Regional All Position

Continental offers the right tire for every application and type of terrain. Whether you need to take the highway, regional roads, city traffic or even venture off road, our premium tires for trucks and buses are engineered to suit your specific application needs.

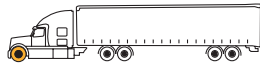
LSR1 - 16"

Mileage

All Steel



Steel Casing Regional All Position



- All steel radial designed for outstanding durability and maximum retreadability.
- Specialized compounding delivers outstanding mileage while still providing excellent fuel efficiency.
- 10 ply light truck all steel casing provides increased load carrying capacity, durability and puncture resistance.



Applications
Long and Regional haul all position.

Segment
Goods

Tire Size	Load Range	Article Number	Tread Depth (32nds)	Max Speed (MPH)#	Static Loaded Radius IN (MM)	Overall Inflated Diameter IN (MM)	Overall Inflated Width IN (MM)	Loaded Section Width IN (MM)	Approved Rim(s)	Minimum Dual Spacing IN (MM)	Revs Per Mile (KM)	Tire Weight LB (KG)	MAX. LOAD@INFLATION	
													LBS PSI (KG KPa)	LBS PSI (KG KPa)
TUBELESS TIRES ON 15 DEGREE DROP CENTER RIMS														
LT225/75R16	E	04120450000	14	93	13.9 (352)	29.7 (754)	8.9 (225)	9.5 (242)	6.00	10.0 (254)	697 (433)	52 (23)	2680 80 (1215 550)	2470 80 (1120 550)

Note - Rim listed first is the measuring rim. Minimum Dual Spacing calculated without chains. * - ECE Certified # - Exceeding the lawful speed limit is neither recommended nor endorsed. Overall widths will change 0.1 inch (2.5 mm) for each 1/4 inch change in rim width. Minimum dual spacing should be adjusted accordingly. Continental Tire the Americas, LLC reserves the right to change product specifications at any time without notice or obligations. Please consult rim manufacturers load and inflation limits. Never exceed rim manufacturers limits without permission of component manufacturer.