

Continental 
The Future in Motion

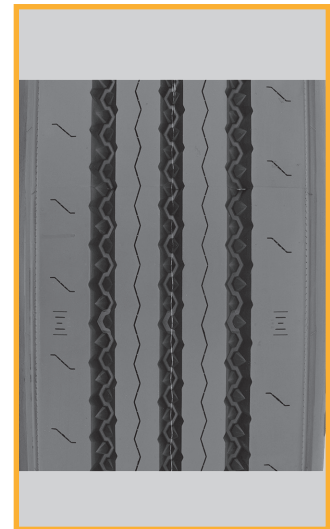
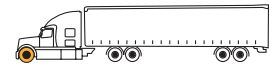


HSR

Heavy Steer Regional

Continental offers the right tire for every application and type of terrain. Whether you need to take the highway, regional roads, city traffic or even venture off road, our premium tires for trucks and buses are engineered to suit your specific application needs.

ContiTread™



Heavy Steer Regional

- Deep cut and chip resistant tread for long tread life.
- Pyramidal stone ejectors in all tread grooves to stop stone retention for long casing life.
- Robust shoulder rib for long tread life.
- Shallower cut and chip resistant tread for long tread life for 18/32".

ContiTread™

		TREAD DEPTH	
		23/32"	18/32"
TREAD WIDTH	215	185	
	225	195	
	235	215	
	245	225	
	260	235	
		245	
		260	



Applications

Regional hauling and on/off road, all-position.

Segment

- Goods
- People
- Construction

Tire Size	Load Range	Article Number	Tread Depth (32nds)	Max Speed (MPH)#	Static Loaded Radius IN (MM)	Overall Inflated Diameter IN (MM)	Overall Inflated Width IN (MM)	Loaded Section Width IN (MM)	Approved Rim(s)	Minimum Dual Spacing IN (MM)	Revs Per Mile (KM)	Tire Weight LB (KG)	MAX. LOAD@INFLATION			
													LBS	PSI	LBS	PSI
													(KG)	(KPa)	(KG)	(KPa)
TUBELESS TIRES ON 15 DEGREE DROP CENTER RIMS																
11R22.5*	H	05715100000	18	75	19.3	41.3	11.0	12.2	8.25, 7.50	12.5	502	112	6940	120	6395	120
					(489)	(1049)	(279)	(310)			(318)	312	(51)	(3150 830)	(2900 830)	

Note - Rim listed first is the measuring rim. Minimum Dual Spacing calculated without chains. * - ECE Certified # - Exceeding the lawful speed limit is neither recommended nor endorsed. Overall widths will change 0.1 inch (2.5 mm) for each 1/4 inch change in rim width. Minimum dual spacing should be adjusted accordingly. Continental Tire the Americas, LLC reserves the right to change product specifications at any time without notice or obligations. Please consult rim manufacturers load and inflation limits. Never exceed rim manufacturers limits without permission of component manufacturer.