

## Instruction # 7001



### IDLER PIVOT ASSEMBLY AND WELD IN GUSSET

**CAUTION:** Installation must be performed by a qualified mechanic. Installation by an un-qualified mechanic may result in an unsafe vehicle/ and or personal injury.

**\*\*\*Upon completion of the installation, the front end alignment must be checked in order to obtain optimal results.\*\*\***

**Note:** It is necessary to raise the vehicle to perform installation of these products. A hoist or installation bay is recommended. Always ensure the truck is properly supported before attempting installation as serious injury could occur.

#### Parts List

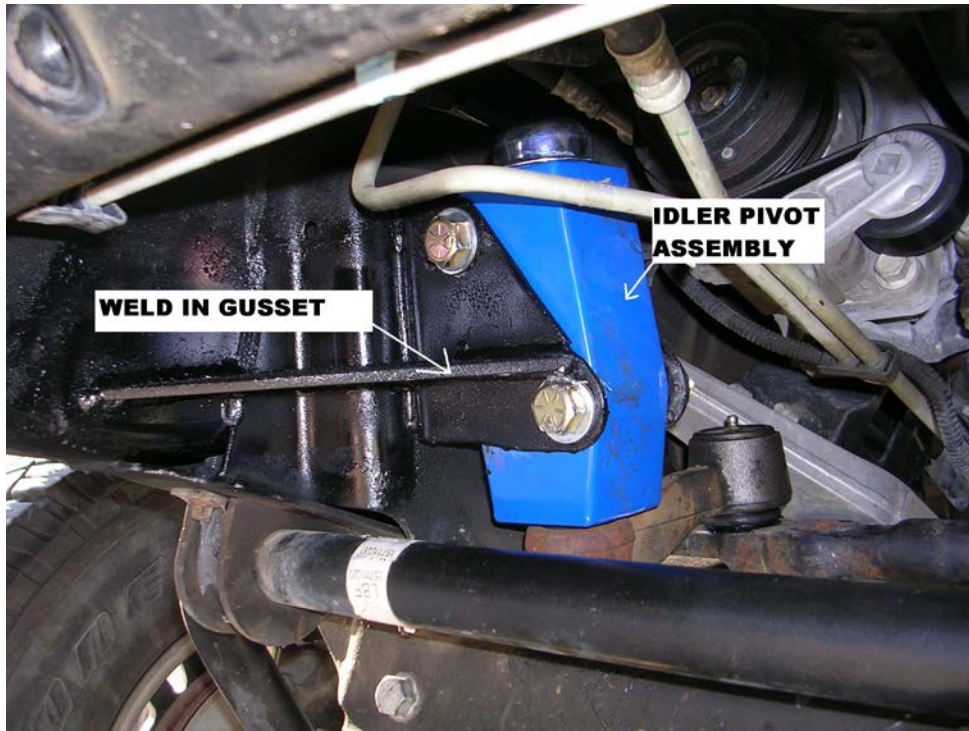
- Weld in gusset, shape depends on 6 or 8 lug chassis.
- Idler Arm Pivot Assembly
- (2) 9/16"-12x3.5" hex bolt
- (2) 9/16"-12 lock nut
- (4) 9/16" flat washer

#### **INSTRUCTIONS:**

1. If you are installing this on a Hummer H2, Please see page 3. If installing on a 1500HD, 2500HD, 3500HD Please continue with steps 2-11.
2. Remove the front shield - set it aside with the hardware
3. Disengage the idler arm by loosening the large nut at the bottom end of the OEM unit.
4. Remove the nut, lock washer and idler arm – discard the nut and lock washer. Set the idler arm to the side.
5. Remove the mounting bolts (quantity of 2), washers and locknuts and the OEM unit – discard the hardware – salvage the OEM unit.
6. Install the weld in gusset as shown in the picture (figure 1.1) A qualified welder will be needed at this point. **\*\*Do not quench welds\*\***
7. Clean and paint all raw metal surfaces after cooled
8. Install the new **Idler Pivot Assembly** (noted in figure 1.1) in the reverse manner above, using **NEW** 9/16 – 12, Grade 8 bolts, flat washers and locknuts. (Flat washers must be under the bolt head and between the nut and the frame bracket.) Torque to 100ft. lbs.
9. Reassemble the idler arm to the **Idler pivot assembly**, using the new lock washer and nut supplied.
10. Check any hoses or lines for interference with the larger pivot assembly and gusset. Tie back any lines or hoses as needed to avoid rubbing wear issues.

11. Check the alignment per the vehicle's manual.

\*\*\*\*\*Use this figure to ensure proper installation\*\*\*\*\*



**FIGURE 1.1**

## Hummer H2 Installation Guide

1. Remove the front shield. Set aside with the hardware.
2. Remove the nut at the bottom of the OEM unit which holds the idler arm in place. Disengage the idler arm from the OEM Support Assembly using a large mouth tie-rod separator.
3. Discard the nut and set the idler arm aside.
4. Remove the mounting bolts (quantity of 2), washers & lock nuts and the OEM unit – discard the hardware and the OEM unit. *(Hummer H2 specific)*(See Figure A for existing H2 brace)
5. Cut the top plate of the brace so it is flush with side braces. Cut the bottom plate 1/2" and bend it down. (See Figure B for cut brace)
6. Weld the gusset (SS125) in the center of the brace, forward to frame. (See Figure C) Gussets optional on pickups.
7. Install the SuperSteer Idler Arm Support Assembly (SS175) in the reverse manner above, using NEW 9/16-12, grade 8 bolts, flat washers and locknuts. (Flat washers must be under the bolt head and between the nut and the frame-bracket.) *Torque to 100 ft. lbs.*
8. Reassemble the idler arm to the SS175, using the new lock washer and nut supplied. *Torque to 100-125 ft. lbs.* Check the alignment per vehicle's manual.



FIGURE A – Existing Brace

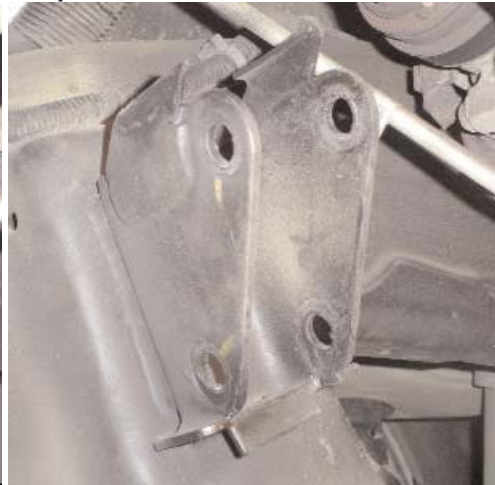


FIGURE B – Cut Brace



FIGURE C - Gusset welded in center of brace; SS175 installed.