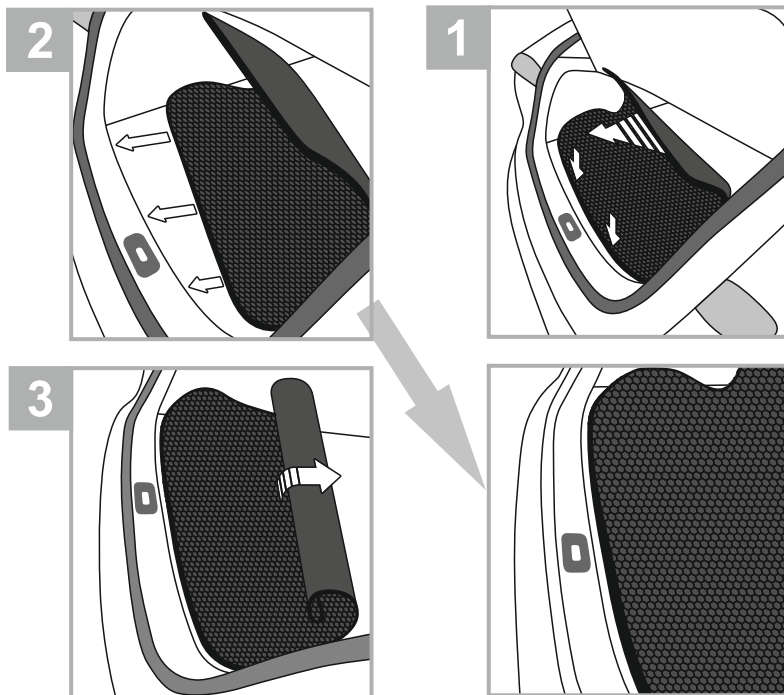


# CLIMART

## Custom fit CLIMART CARGO LINERS installation guide



## Custom fit CLIMART CARGO LINERS installation guide

Congratulations on your purchase of CLIMART custom-fit cargo liners for your vehicle!

HONEYCOMB LINERS are a new technology to protect the interior of the vehicle. It is the best solution to protect your vehicle from dirt, water, and any accidental spills. Water, dust, snow, and dirt are trapped in the cargo liner while protecting your car's interior.

CLIMART cargo liners have been specially designed to fit snugly into your vehicle.

Please keep this guide together with your car owner's manual for future reference.

### Installation instructions:

1. Make sure the vehicle's engine is off.
2. Roll out the liner. Attention! If the outdoor temperature is lower than 50 ° F, put the rolled-up liner in a warm room for 24 hours and then roll it out.
3. Remove foreign objects from the trunk.
4. Install the liner in the trunk.
  - a. To do this, pull the far end of the liner toward you and place the liner in the trunk with the anti-slip net down.
  - b. Set the closest part of the liner to you in accordance with the contours of the trunk of your car.
  - c. Spread the liner inside the trunk.
  - d. Check the correct installation of the liner - there should be a gap of no more than 0,39 in between the liner and the trunk contour, the liner should not cover the trunk sides.
  - e. Please note that some time is required for the cargo liner to completely set into the floor pan, especially in places where there are significant changes in the floor pan shape. Depending on the ambient temperature, the cargo liner will finally take the vehicle's floor pan shape within 2 to 7 days.
5. In order to raise the cargo liner, use the special loop that is sewn into the liner.
6. Please note that some time is required for the floor mat to completely set into the floor pan, especially in places where there are significant changes in the floor pan shape. Depending on the ambient temperature, the floor mat will conform to the vehicle's floor pan shape within 2 to 7 days.

### WARNING!

1. Secure the load while driving.
2. When the liner unfolds, a slight peeling of the mesh is possible, this does not reduce the consumer properties of this product.

### MAINTENANCE:

Please take out and clean your Climart floor liners regularly to remove dirt and debris.

With HONEYCOMB LINER technology, it takes just 3 seconds to clean the floor mats without using water.

For daily care, do not wash the floor mats, just remove them from the car and shake: gently remove the floor mats from the vehicle, position them vertically, and clean with one or more palm strikes on the floor mat back. With two or three firm strikes dirt, dust, and water will be removed from the cells.

Clean heavily soiled floor mats with detergents and water.

Regular cleaning (care) ensures a longer service life of the floor mats.

Use only mild detergent soap and water for cleaning. HONEYCOMB LINERS are made of a polymer, which is resistant to any harsh environment. However, it is not recommended to use aggressive chemicals or abrasive detergents for cleaning.

The back of the carpets is equipped with a special anti-slip mesh, to avoid damage to the anti-slip mesh, avoid contact of the mesh with sharp and cutting objects, sources of open fire, and also be careful when washing with high pressure water supply devices. When washing with such devices, keep a distance of at least 20 inches (50 cm) from the carpet.