

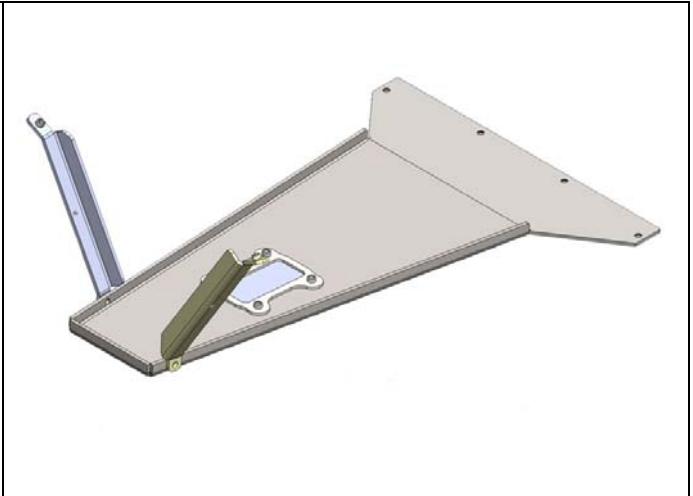
Installation Manual
JK Oil Pan Skid Plate
2007-2011 Jeep Wrangler & Unlimited
 Last Revision No.: 1/10/12
 PN – 4108900



Thank you for purchasing a Clayton Off Road suspension.

Please check to make sure you have all necessary parts before you start your install.

4108900 – JK Oil Pan Skid Plate		
1	4108901	Oil Pan Skid Plate
1	4108902	Oil Drain Cutout Bracket
1	4108903	Front Mounting Bracket – Driver Side (L)
1	4108904	Front Mounting Bracket – Pass Side (R)
8	94286	3/8"-16x1" Flat Head Socket Cap Screw
2	15103	3/8"-16 x 3/4" Grade 8 Hex Cap Screw
2	15107	3/8"-16x1 1/4" Grade 8 Hex Cap Screw
2	33815	3/8" SAE Flat Washer Yellow Zinc
4	33893	3/8" High Alloy Lock Washer
2	36406	3/8"-16 Hex Nut Grade 8



If you are missing any of the above items, or are unclear about what parts you need, please call and ask before you begin your installation process.

Note : This oil pan skid plate is designed to be used with OE motor mounts.

Note : This oil pan skid plate is designed to be used with our JK 3 piece cross member (PN 2108100) or our HD cross member (PN 2108200). It does NOT match up to the factory holes in the OE cross member.

Note : This skid plate was developed to cover the OE exhaust pipe and may NOT clear aftermarket systems.

WARNING: Suspension systems and their components are designed to enhance your vehicles off-road performance. This may cause your vehicle to handle differently, on and off-road, then it did from the factory. Always wear your seatbelts, and take extra care when driving a modified vehicle. Failure to do so can result in loss of control which may result in a rollover causing serious injury, even death to the driver and/or passengers of the vehicle. Regular maintenance and constant inspections are required to keep your modified vehicle safe and function properly.

These systems and any components should be installed by certified technicians. Attempts to install these products without proper knowledge can lead to poor performance, or possible failure, which may jeopardize the safety of the vehicle and its passengers. The installer is responsible for proper installation insuring a safe and properly functioning vehicle. Take extra care when operating a modified vehicle and thoroughly inspect your vehicle before and after every off-road use.

Please read the entire instruction manual before starting the installation.

Tool requirements

1. Normal shop tools to remove and install bolts.

Installation Manual
JK Oil Pan Skid Plate
2007-2011 Jeep Wrangler & Unlimited
Last Revision No.: 1/10/12
PN – 4108900

JK Oil Pan Skid Plate Installation:

1. Remove factory oil pan skid plate.
2. If you have already installed our long arm 3 piece cross member, remove the two outer allen head bolts.
3. Install oil pan skid plate using four allen head bolts. Do NOT fully tighten any bolts until all bolts have been installed.
4. The front brackets are labeled (L) for driver side, and (R) for passenger side. If you cannot locate the laser etched letters, the driver side is the longer of the two brackets.
5. A pem fastener has been installed in the top of the bracket. Use the short 3/8s bolt along with a washer and lock nut to mount the top of the bracket on top of the motor mount.



- 6.
7. Below is a close up shot of the upper bracket installed properly. The 1/4 bracket is inside the motor mount, using the bolt, then the lock washer, and finally a washer to clamp everything together. This is the same process on both sides.
8. Use the longer 3/8" bolt and lock washer to connect the bracket to the skid plate on both sides.
9. Check for any clearance issues between your driveshaft, or any part of the oil pan, exhaust or motor.
10. Fully tighten all bolts.



- 11.
12. Remove the 4 allen head bolts in order to change your oil.

We hope your installation went smoothly. Please let us know if you have any questions, comments or concerns.