



**Classic SportBar
2011-2015 Camaro V6 or V8**

The Classic SportBar is intended for restyling purposes only and does NOT provide roll over protection.

Read entire installation guide before starting.



Component List:

| | |
|--|---------------------|
| 1 - Classic SportBar | Part # 1143-7000-01 |
| 1 - Driver Side Mounting Bracket | Part # 1143-6001-01 |
| 1 - Passenger Side Mounting Bracket | Part # 1143-6002-01 |
| 2 - Upper Nut Plates | Part # 1143-6003-01 |
| 2 - Lower Nut Plates | Part # 1143-6004-01 |
| 4 - M6-1.0 x 22mm Bolts (8mm Head) | Part # 410109 |
| 2 - M8 – 1.25 x 25mm Bolts (13mm Head) | Part # 30008 |

Tools Required:

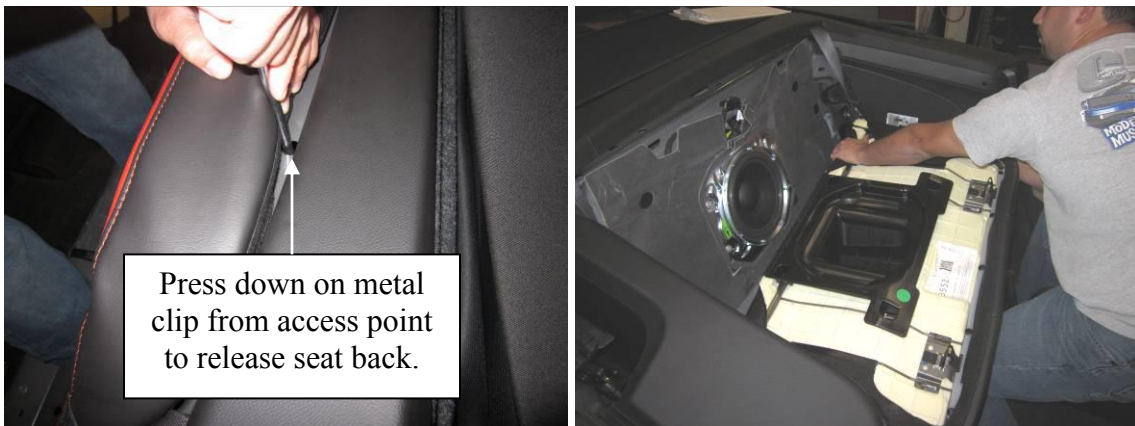
| | |
|-----------------|------------------------|
| Drill Motor | 13mm 3/8” Drive Socket |
| 1/8” Drill | 8mm 1/4” Drive Socket |
| 15/64” Drill | T-50 Torx Bit |
| 1-1/2” Hole Saw | 3/8” Drive Ratchet |
| Center Punch | Torque Wrench |
| Tape Measure | Scissors |
| Grease Pencil | 1/4” Allen Wrench |

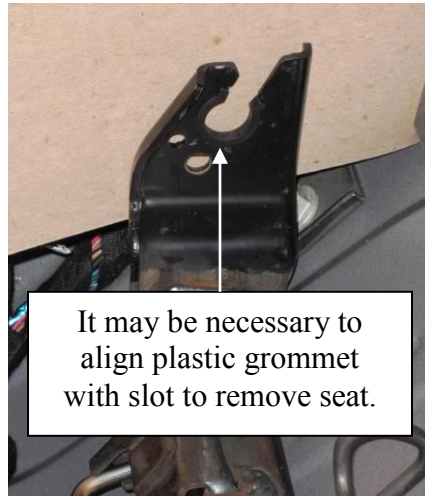
Installation:

1. Put convertible top down.
2. Move both front seats forward as much as possible to gain access to the rear of the vehicle.
3. Remove rear seat bottom. **A.)** Lift up on forward edge of cushion to release. **B.)** Dislodge rear of seat bottom cushion by pushing downward to release the hooks.



4. Remove seat back. **A.)** Refer to the picture below, use a screw driver (or similar tool) to release the metal spring clips. **B.)** Push down through the access holes and pull seat forward. Do the same for both sides. **C)** Tilt the seat down to align the slotted hinge bracket with the hinge pin of the seat. Gently pull upward to release. **Note:** There are plastic grommets in the hinge bracket that may have to be aligned to allow the hinge pin to be released.





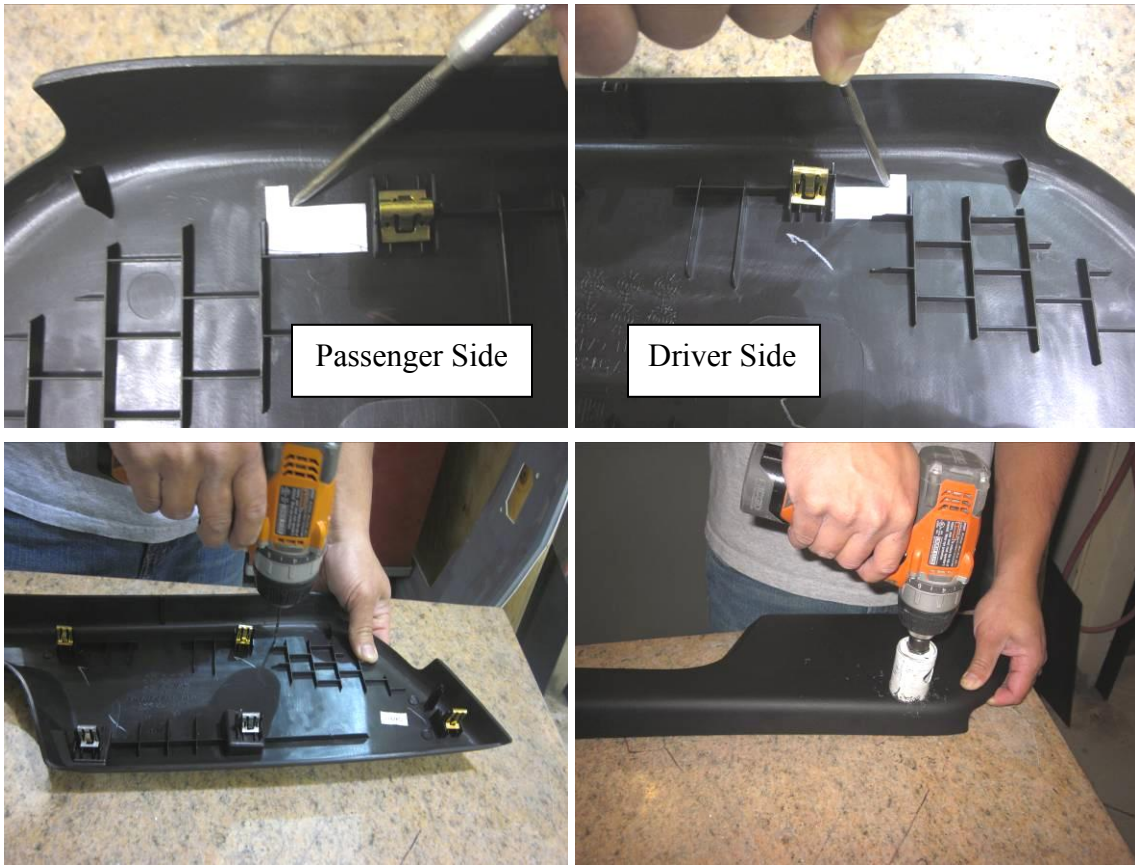
5. Remove the (4) T-50 lower seat belt bolts (front and rear).



6. Remove the upper quarter trim panels. **A.)** Remove the small triangle shaped parts beneath the shoulder belt. **B.)** Gently lift straight up to release the panels and feed the seat belt through the panel.



7. Drill 1-1/2" holes in upper quarter trim panels. **A.)** Cut out the provided paper template (the last sheet of these instructions). **B.)** Place panel upside down on a table and place the template as shown in picture. Mark the center point with a center punch or scribe. **C.)** Drill a pilot hole (1/8" or similar.). **D.)** Flip part right side up and drill the 1-1/2" hole with a hole saw. Do the same on the opposite side.



8. Temporarily reinstall the upper quarter trim panels. **Hint:** The seat belt can be sandwiched between the panels for this step, as the panel will be removed again.
9. Drill 1-1/2" hole in lower quarter trim panel. Using the upper panel as a drill guide, cautiously drill through the lower panel with the same hole saw used in Step # 7.



10. Remove sill plates.



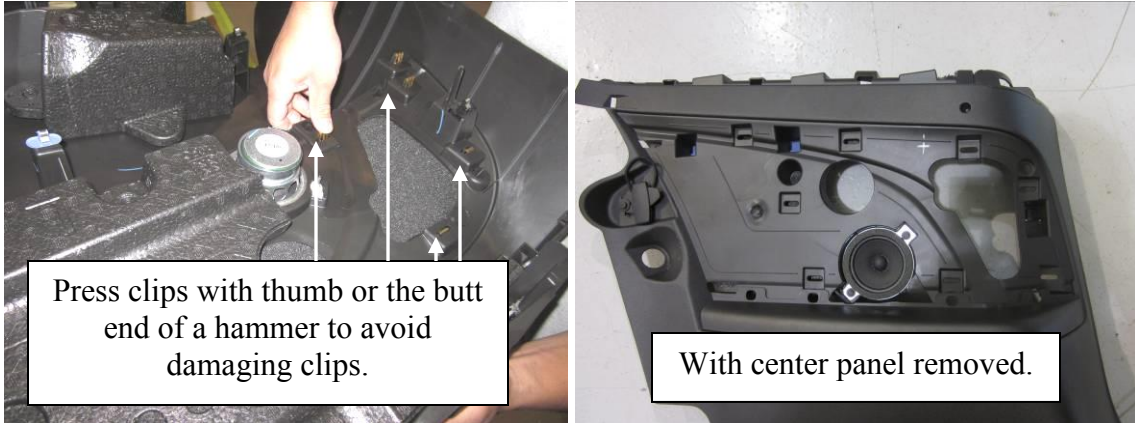
11. Remove upper and lower quarter trim panels. **A.)** Remove the upper panel the same as in Step #6. **B.)** Remove the lower panel by pulling toward the center of the vehicle to release all of the clips. **Important:** Disconnect speaker as soon as panel is released.



12. Install mounting Brackets. **Note:** Brackets are shipped with the upper and lower nut plates assembled. Disassemble at this time. **A.)** Place the lower nut plate behind the “B” pillar. **Important:** Notice that nut plate has a circle that corresponds to a hole already in the body of the car. Install the 8mm (13mm head) bolt through the mounting bracket in to the lower nut plate (Do not completely tighten at this time.) **B.)** Place mounting bracket as shown in picture below. Use a spring clamp to temporarily hold bracket. **C.)** Drill top holes. Make sure the mounting bracket is sitting flush to the sheet metal; adjust your clamp if needed. Use the bracket as a drill guide and drill the (2) holes using a 15/64” drill. **D.)** Place the upper nut plate under the mounting bracket and fasten with the 6mm (8mm head) bolts. **E.)** Torque the fasteners. M6 = 11 NM (08 lbft.) M8 = 25 NM (18) lbft. **F.)** Repeat on opposite side of car.



13. Remove center section of lower quarter trim panels. This panel is located above the armrest. Press on the clips from the back side of the part to release the panel. **Note:** We do not recommend prying from the front side as this may leave pry marks.



14. Drill Set Screw access hole in quarter trim panel. Use the image below as reference. **A.)** Measure 1-3/4" rearward from the molded fastener pocket in the photo and mark a vertical line with a grease pencil or similar. **B.)** Measure down 1" from the "butt-joint" and mark a horizontal line. **Note:** The location of the access holes are not ultra critical, as they will be covered up by the panel previously removed in Step #13. Make sure you are not drilling an area that will be exposed once the center section is reinstalled. **C.)** Drill the hole with the same 1-1/2" hole saw that was used to drill through the quarter trim panels. **D.)** Do the same to the opposite side.





15. Clean up any foreign debris from the vehicle interior.
16. Reinstall lower and upper trim panels. **Note:** Don't forget to connect the speaker.
17. Reinstall triangle shaped trim piece in top of upper trim panel.
18. Reinstall seat belt bolts. Torque rear bolts to 42.5 NM (31 lbft). Torque front bolts to 36 NM (27 lbft).
19. Reinstall rear seat back and bottom.
20. Slide SportBar in to the mounting brackets.



21. Tighten Set Screws. Gently press bar down on top of upper quarter trim panel and tighten set screw with a 1/4" Allen wrench on both sides. **Warning:** Do not force the bar down too much as this will distort the trim panels.

22. Reinstall the center sections of the lower quarter trim panels.



23. Move front seats to desired locations.

Below is the template for marking the center point for the Upper Trim Panel holes. Cut out template with scissors. Place template on back side of trim panels as shown in step #7 and mark the center points. **Note:** This side up for passenger side, and this side down for driver side. Refer to images under step #7 for further clarification.

