



Instructions for installing Extendable Replacement Mirrors for Ford HD vehicle.

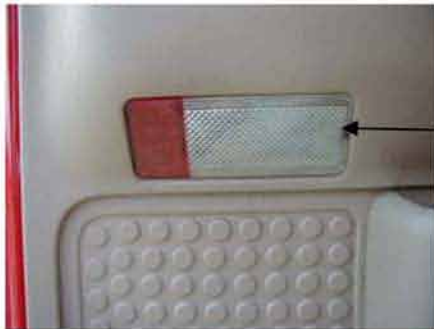
Manual –	CIPA # 82100	Right Hand	#82110	Left Hand	#82111
Electric –	CIPA # 72100		#72110		#72111
Heated / Electric –	CIPA # 72500		#72510		#72511

Manufacturer recommends this installation be carried out by a professional installer or your local dealership. PLEASE read ALL INSTRUCTIONS and warnings carefully before installing this product. These mirrors are designed only for the vehicle listed on this page. Ensure that the fitting instructions are followed exactly, as failure to do so may result in incorrect installation, or result in the driver, passenger or vehicle being placed in a hazardous condition, as well as voiding any warranty, implied or otherwise.

DRIVER SIDE – Manual, Electric & Heated/Electric

Remove electrical panel that houses mirror, window and door lock switches by pulling upward on the front of the switch panel, then forward to lift out.

1. Disconnect wiring plugs by depressing the small tab in the center of each connector.
2. Remove the light cover at the lower outer corner of the door by carefully prying the forward end of the light cover outward. The light cover should now slip out.



Carefully pry outward to remove.

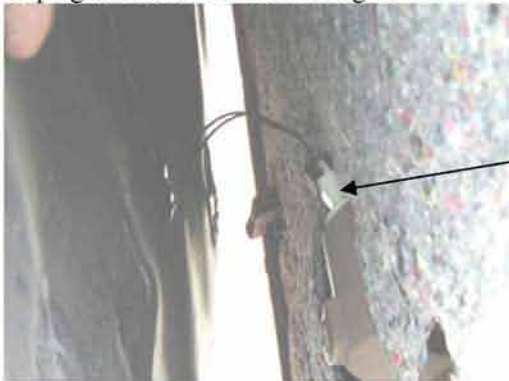
3. Remove the door panel holding screws using a 9/32" (7 mm) socket. One is located up near the electrical panel as shown in photo 1. The other is located behind the door light cover as shown in photo 2.



Photo 2
Lower door panel screw:
9/32" (7mm) socket

Photo 1
Upper door panel screw:
9/32" (7mm) socket

- 4. Carefully lift the door panel upward and out from the bottom. CAUTION: Lift the door panel high enough to clear the locating legs of the door panel (9 legs).
- 5. Unplug the socket for the door light.



Door panel light.
Twist ¼ turn and
pull out.

- 7. Remove the two rubber grommet plugs from the front of the door. Two (2) mirror studs located behind these.



Remove two (2)
grommet plugs.

Remove the trim
piece by pulling off.

- 8. Remove gray wind-seal tape strip. Two (2) mirror studs located behind this.



Remove wind-seal
tape. Peel off.

9. Remove speaker by unscrewing the 4 holding screws using a 7/32" (5.5 mm) socket.



Remove 4 speaker screws using 7/32" (5.5 mm) deep-well socket

10. Disconnect mirror plug from wiring harness by depressing the small white tab on the connector and pulling apart.



Depress latching tab and pull connection apart.

11. Using a 7/16" (11mm) deep well socket, remove the 4 nuts from the studs that hold the mirror on the door.



Remove the 4 nuts from the studs.

12. Pull the mirror and wire harness out from the door.

Wiring of the mirror to match the vehicle – DRIVER SIDE

If the extendable towing mirrors purchased do not have a connector attached, follow these instructions:

Manual	N/A
Electric wires are	Yellow, Blue and Red.
Heated/Electric wires are:	Yellow, Blue, Red, Black and Black.

1. Determine which factory connector is used on your existing DRIVER SIDE mirror:

Electric Version – 4 pin, white connector.



Verify the factory mirror wire colors are as follows: (driver side mirror)

- Black
- Blue
- Red

Black & Blue activate Up/Down on mirror.

Black & Red activate In/Out of mirror.

Heated / Electric Version – 4 pin & 2 pin connector. (driver side)



Verify the factory mirror wire colors are as follows:

- Blue (4-pin connector)
- Yellow (4-pin connector)
- Red (4-pin connector)
- Black (2-pin connector)
- Black (2-pin connector)

Blue & Yellow activate Up/Down on the mirror

Red & Yellow activate In/Out of the mirror

Black & Black activate the heater

Heated / Electric Version – 10 pin, black connector. (driver side)



Verify the factory mirror wire colors are as follows: (driver side mirror)

- Black w/ White stripe
- Black
- Green
- Blue
- Yellow (2)
- Red
- Brown

Blue & Yellow activate Up/Down on the mirror

Red & Yellow activate IN/Out of mirror

Black & Black w/white stripe activate heater

NOTE: If vehicle harness has a second, 3-pin connector, disregard it. This is for the turn signal option, which is not available on the Extendable Replacement Mirrors at this time.

2. Cut the factory connector off the mirror leaving approximately 4" (100 mm) of wire attached to the connector. This 4" (100 mm) will be used for attaching the "butt style" plugs (**Not Included**) to each of the wires.
3. Cut back about ¼" (6 mm) of the insulation on each wire. Crimp one end of the "butt plugs" to each of the connector wires.
4. Crimp the mating end of the "butt plugs" to the 3 wires of the extendable towing mirror.
5. Plug the "butt plugs" from the connector to the mirror as follows: (DRIVER SIDE)

<i>Electric Only</i>	<i>Heated / Electric</i>
Yellow to Black	Yellow to Blue
Blue to Blue	Yellow to Red
Red to Red	Black to Black - heater wires
	Black to Black (w/white stripe) - heater wires
6. It is not necessary, but you may wish to apply black electrical tape to each of the "butt plug" connections.

Installing the Extendable Replacement Mirror into the door – DRIVER SIDE - *Electric & Heated/Electric*

1. Remove the 4 nuts from the mirror using a 10 mm deep well socket.
2. Carefully slide the wiring harness on the mirror through the square hole in the door.
3. Carefully slide the 4 studs into the corresponding holes in the door.
4. Having someone assist you at this point may make installation easier. Have someone hold the mirror in place while attaching the 4 nuts to the mirror studs using the 10 mm socket.
5. Tighten the nuts down snug / secure. DO NOT over-tighten.
6. On the inside of the door, plug the mirror connector back into the wiring harness.
7. Plug the electrical connector on the electrical panel for the mirrors back into the wiring harness. This will be the most forward switch on the panel.
8. Turn the ignition key to the "ON" position and test the function of the mirror. (UP/down/in/out) using the switch on the door panel. If the mirror moves correctly, unplug the connector from the door panel and put the door back together. If not, check the "butt plug" connections.
9. Turn the key off and re-install the door panel.
10. Re-install the speaker using the four (4) screws.
11. Re-install the door lamp by inserting it back into the hole in the door panel and twisting ¼ turn.
12. Align the locating legs on the back of the panel with the holes in the door.
13. Slide the door panel down, assuring all nine (9) locating legs.
14. Re-install the two (2) screws, one near the door lamp, one, just above the electrical panel.
15. Snap the door lamp cover back into place.
16. Reconnect the mirror, window, and door lock switches to the electrical panel
17. Snap the electrical panel back into place
18. Replace the trim panel by the front of the window. Replace the two (2) grommets.

Installing the Extendable Replacement Mirror into the door – DRIVER SIDE – *Manual*

Follow steps 1, 3, 4, 5, and 18

PASSENGER SIDE – Manual, Electric and Heated/Electric

Follow the same instructions as DRIVER SIDE to remove factory mirror from door.

Wiring of the mirror to match the vehicle – PASSENGER SIDE

1. Verify the factory mirror wire colors are as follows: (PASSENGER SIDE)



Electric Only



Heated / Electric



Heated / Electric

Electric Only

Black
Purple
Green

Heated / Electric

Yellow to Purple
Yellow to Green
Black to Black
Black to Black

Black & Purple activate Up/Down on mirror
Black & Green activate In/Out on mirror

Yellow to Purple activate Up/Down on the mirror
Yellow to Green activate In/Out on the mirror
Black to Black activate heater
Black to black activate heater

2. Cut the factory connector off the mirror leaving approximately 4" (100 mm) of wire attached to the connector. This 4" (100 mm) will be used for attaching the "butt style" plugs (**Not Included**) to each of the wires.
3. Cut back about 1/4" (6 mm) of the insulation on each wire. Crimp one end of the "butt plugs" to each of the connector wires.
4. Crimp the mating end of the "butt plugs" to the 3 wires of the extendable towing mirror.
5. Plug the "butt plugs" into the connector to the mirror as follows: (PASSENGER SIDE)

Electric Only

- Yellow to Black
- Blue to Purple
- Red to Green

Heated / Electric

Yellow to Purple
Yellow to Green
Black to Black
Black to Black

6. It is not necessary, but you may wish to apply black electrical tape to each of the "butt plug" connections.

Installing the Extendable Replacement Mirrors into the door – PASSENGER SIDE – *Manual, Electric and Heated/Electric*

Steps same as driver side.