



**Chicago
Pneumatic**

Operator's Manual

CP80015

CP80020 - CP80021

CP80030 - CP80031

Trolley Jack



WARNING

To reduce risk of injury, everyone using, installing, repairing, maintaining, changing accessories on, or working near this tool must read and understand these instructions, as well as separately provided safety instructions part number 8940170883, before performing any such task.

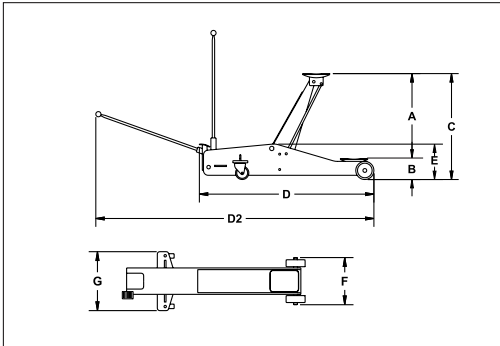


Fig. 01

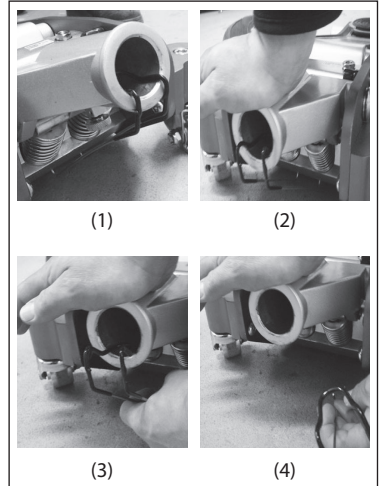


Fig. 02

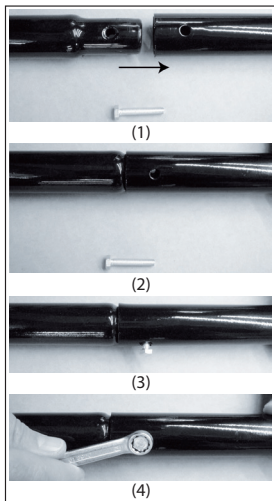


Fig. 03

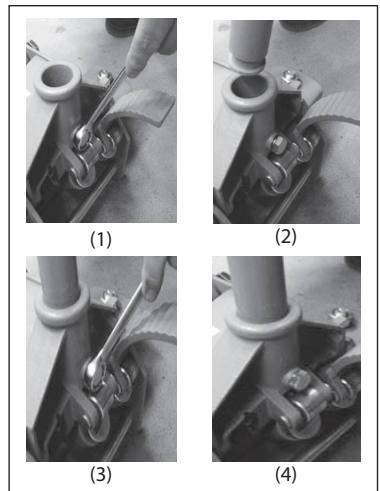


Fig. 04

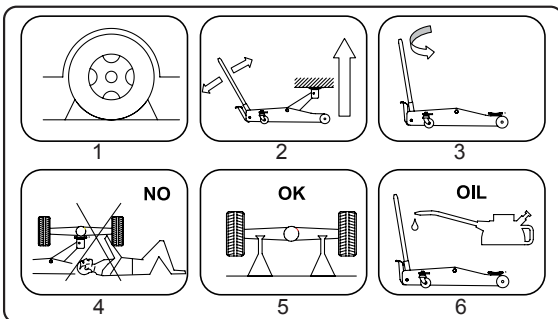


Fig. 05

1. Technical Data (See figure 1.)

Technical Data	Weight	Lifting capacity	Hydraulic oil Quantity	A	B	C	D	D2	E	F	G
Unit	[kg]	[kg]	[l]	[mm]	[mm]	[mm]	[mm]	[mm]	[mm]	[mm]	[mm]
CP80015	50.5	1500	0.21	530	70	600	920	2140	153	282	382
CP80020	39.4	2000	0.29	430	75	505	750	1960	150	270	375
CP80021	39.8	2000	0.29	430	75	505	760	1965	145	277	380
CP80030	45	3000	0.22	455	95	550	860	2050	160	257	375
CP80031	46	3000	0.22	455	95	550	860	2050	160	257	375

All values are current as of the date of this publication.

2. Machine type(s)

- A Trolley jack is a device to lift a vehicle up to for accessibility during repair and maintenance.
- A Jack is only a lifting device and should never be used for transporting and/or loading a vehicle. Lifting a vehicle with person inside is prohibited. Moving the jack with load is prohibited. No other use permitted. For professional use only.
- Please read the instructions carefully before starting the machine.

3. Mounting instruction

⚠ WARNING Make sure every parts are fixed and tightened.

- Remove the transportation lock on the lever support. (Fig.02). Push the lever support down (1/2) and remove the transport lock (3/4).
- At first remove the hexagon screw SW10 (Fig.03(1)) at the side of the lower lever rod and put the upper and lower lever rod together before securing the connection with the hexagon screw (Fig.03(2/3/4)).
- Now attach the lever rod to the lifting device. For this purpose remove the hexagonal screw SW17 at the support of the lifting device (Fig.04(1)) and place the lever rod into the support (Fig.04(2)). Fasten the screw again (Fig.04(3/4)).
- Before using the trolley jack it is necessary to de-aerate the hydraulic circuit (see section 6).

⚠ Caution Working area of 1 m must be kept free both in front of and behind the machine while it is in operation so that it is always easily accessible.

Purge air from the hydraulic system:

- Open the discharge valve by turning the lever rod anticlockwise whilst simultaneously pumping with the lever (5-6 times).
- Afterwards, pump the jack up to its maximal height before lowering it again. The hydraulic system is de-aerated.

4. Operation

⚠ Caution Please position the trolley jack underneath the lifting points of the vehicle.

- Make sure that no person stays in the car that will be lifted. Turn off the engine and put on the handbrakes of the car. Use wedges to prevent the car from moving (Fig.05(1)). Do not get into the car and do not turn the engine on.
- Always position the lifting jack in such a way that it cannot be operated from underneath the car (Fig.05(4)).
- Always make use of the car manual in order to identify the correct lifting points of the vehicle.
- Use the lever rod or the foot pedal to bring the lifting device to the desired height (Fig.05 (2)). Make sure that the hydraulic valve is closed. For this purpose it is necessary to fasten the lever rod clockwise. Please note, that the foot pedal is mainly used to bridge the no-load stroke.
- The lifting devices are provided with an overload valve, which has been adjusted by the manufacturer. This valve must never be readjusted.
- In order to lower the load turn the lever rod slowly anticlockwise (Fig.05(3)).
- It is necessary that the operator can watch the lifting device and the load during all movements.

⚠ WARNING Never use the lifting jack in order to move the car or to leave it lifted. Always use chassis stands (Fig.05(5)).

⚠ WARNING When not using the trolley jack the piston / lifting arm must be pulled in.

⚠ WARNING It is not allowed to work under the raised load until it is secured by suitable means.

⚠ WARNING The operator shall be provided with all necessary information about training and about pumping and translating forces.

5. Maintenance instruction

⚠ Caution Do not use damaged/deformed product. If abnormal noise or vibration occurs, stop use immediately, then inspect and ask manufacturer for help. It is recommended that this inspection be made by a manufacturer's or supplier's authorized repair facility.

⚠ Caution The greatest single cause of failure in hydraulic units is dirt.

- Keep the service jack clean and well lubricated to prevent foreign matter from entering the system. If the jack has been exposed to rain, snow, sand, or grit, it must be cleaned before it is used.
- Store the jack, with pistons completely retracted, in a well-protected area where it will not be exposed to corrosive vapors, abrasive dust, or any other harmful elements.
- Periodically check the condition of the product.
- Store the product in dry and non-corrosion environment.
- Owners and/or operators should be aware that repair of this equipment may require specialized knowledge and facilities. It is recommended that an annual inspection of the product be made by a manufacturer's or supplier's authorized repair facility and that any defective parts, decals, or safety labels or signs be replaced with manufacturer's or supplier's specified parts. A list of authorized repair facilities is available from the manufacturer or supplier, please call them for help.
- Any product that appears to be damaged in any way, is found to be worn, or operates abnormally SHALL BE REMOVED FROM SERVICE UNTIL REPAIRED. It is recommended that necessary repairs be made by a manufacturer's or supplier's authorized repair facility if repairs are permitted by the manufacturer or supplier.
- Only attachments and/or adapters supplied by the manufacturer shall be used.

6. Trouble Shooting

Fault	Cause	Remedy
Trolley Jack does not lift the load	1) The descent valve was not closed properly	please close the valve by turning the pump rod clockwise
	2) Not enough oil	Low the saddle entirely and top up the hydraulic oil until 4 mm under rim of the oil plug on the cylinder
	3) Too much oil in the reservoir	Please lower the lifting arm entirely and check the oil level. If the oil level is higher than 4mm underneath the oil plug, please remove some oil from tank. The oil level should not be higher than 4mm underneath the rim of the oil plug.
Trolley Jack does not hold the load	4) Same reason like in 1)	Please proceed as described in 1)
	5) The hydraulic oil is contaminated with particles or dirt	As a quick cure, please turn the pump rod clockwise and step on the front wheel, pull up the lifting arm on the saddle entirely, release the saddle and lower the lifting arm entirely by turning the pump rod anti-clockwise. Close the descent valve again by turning the pump rod clockwise and try to use the tool again
Trolley Jack does not lift the load up to the indicated maximum height	6) Same reason like in 2)	Please proceed as described in 2)
	7) are air bubbles in the hydraulic system for instance from transport	Please proceed as described in 5)
Saddle can not be lowered entirely	8) Same reason like in 5)	Please proceed as described in 5)
	9) The spring /spring position 2 is /are not attached properly or worn out	Clean and lubricate all moving part regular and exchange all damaged and worn part with new original parts
Trolley Jack lifts with difficulties	10) Same reason like in 7)	Please proceed as described in 5)
	11) Same reason like in 3)	Please proceed as described in 3)

CP80021/CP80030/CP80031: The design has been validated according: ASME PALD-2009

7. Declaration of conformity

We : **CHICAGO PNEUMATIC Tool Co.**
 Declare that the product(s): **CP80015/CP80020/CP80021/CP80030/CP80031** **Serial Number: From 00001 to 99999**
 Machine type(s): Trolley jack Origin of the product: China
 is in conformity with the requirements of the council Directives on the approximation of the laws of the Member States relating : to
 "Machinery" **2006/42/EC (17/05/2006)**
 applicable harmonised standard(s) : **EN 1494:2000 + A1:2008**

Name and position of issuer: **Nicolas Lebreton (R&D Manager)**

Place & Date: **Saint-Herblain,**



Technical file available from EU headquarter.

Original Instructions are in English. Other languages are a translation of the original instructions.

Copyright 2014, Chicago Pneumatic Tool Co. LLC

All rights reserved. Any unauthorized use or copying of the contents or part thereof is prohibited. This applies in particular to trademarks, model denominations, part numbers and drawings. Use only authorized parts. Any damage or malfunction caused by the use of unauthorized parts is not covered by Warranty or Product Liability.