



Also available from **CFR Performance**

HZ-6405
Small Block Chevy
Alternator Bracket Set



HZ-6407
Small Block Chevy Type II
Power Steering Pump Bracket Set
Installation Guide



**Chevy Small Block Type II
Power Steering Pump Bracket Set
HZ-6407**

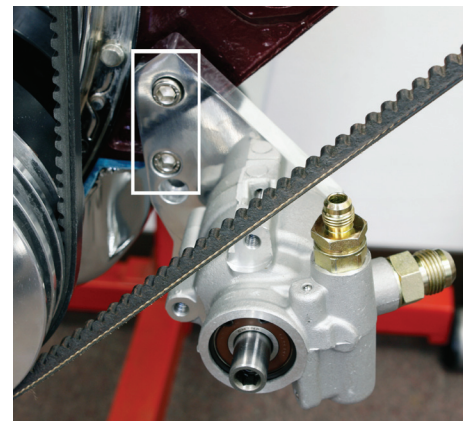
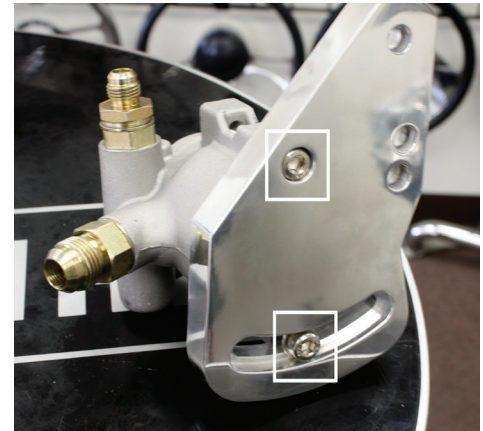
- 1 x Main Bracket (5 Holes)
- 2 x 3/4" A Bolt(s) - 5/16"
- 2 x 3/4" B Bolt(s) - 7/32"
- 1 x 5/8" Diameter Washer



Installation Instructions

step 1

Attach Bracket to Type II
Power Steering Pump using B Bolts. Use
washer with lower bolt location for adjusting.



step 2

Use A Bolts to attach bracket and pump
configuration to the engine block.

Learn more about performance steering parts we have.