



Chevy Small Block Type II Power Steering Pump Bracket Set **HZ-6407**

- 1 x Main Bracket (5 Holes)
- 2 x 3/4" A Bolt(s) - 5/16"
- 2 x 3/4" B Bolt(s) - 7/32"
- 1 x 5/8" Diameter Washer

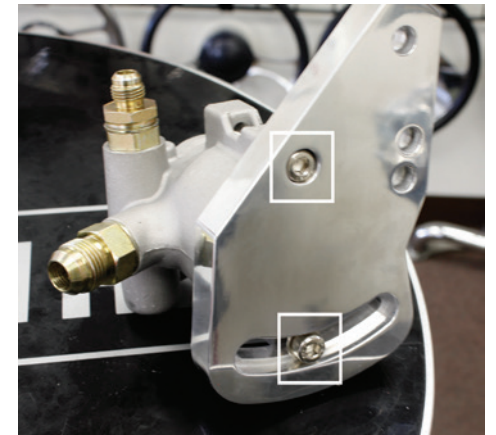


HZ-6407 Small Block Chevy Type II Power Steering Pump Bracket Set Installation Guide

Installation Instructions

step 1

Attach Bracket to Type II
Power Steering Pump using B Bolts. Use
washer with lower bolt location for adjusting.



step 2

Use A Bolts to attach bracket and pump
configuration to the engine block.

