



Installation Instructions

PART NUMBERS: 76015, 84015, CQT76015

Applications:

Years	Make	Models
2016-Current*	Mercedes	Metris Cargo/Passenger

Installation Time: **20 min**

The time listed above is the average time for professional installers. If you do not feel comfortable performing this installation on your own or are in need of assistance, please contact a professional installer.



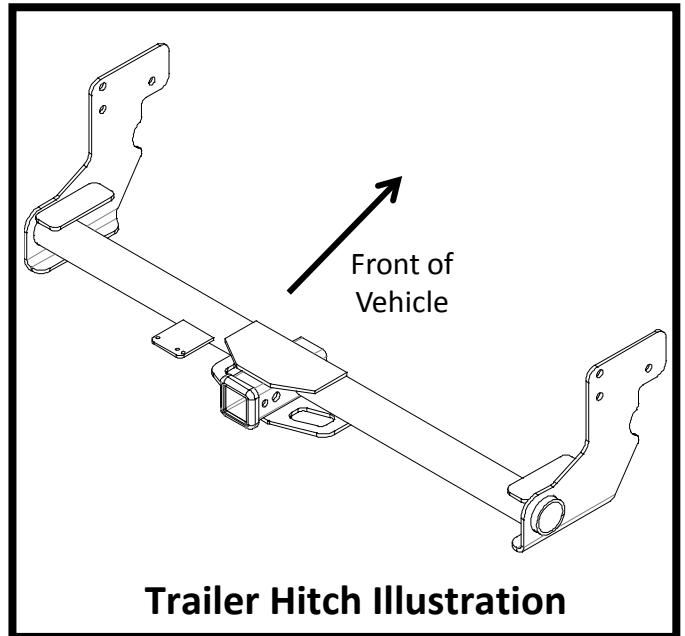
Representative Vehicle Photo

Equipment Required:

Safety Glasses	Ratchet	16 mm 18 mm Sockets	6" Socket Extension	Torque Wrench

**DO NOT EXCEED LOWER OF TOWING VEHICLE
MANUFACTURER'S RATING OR:**

Hitch Type	Max Gross Trailer Weight	Max Tongue Weight
Weight Carrying	5000 lb. (2270 kg)	750 lb. (340 kg)
Weight Distributing	6000 lb. (2724 kg)	750 lb. (340 kg)



Trailer Hitch Illustration



Always wear SAFETY GLASSES when installing hitch

Installation Instructions

PART NUMBERS: 76015, 84015, CQT76015

Fastener Kit: 76015F

①	Qty. (6)	Bolt M12 1.75x110, CL10.9	
②	Qty. (6)	Block .375 X 1.50 X 2.00	
③	Qty. (6)	Conical washer 1/2"	
④	Qty. (6)	Hex nut M12x1.75, CL10	

Fasteners
typical
both sides

Conical washer
teeth side
against hitch



Figure 2a

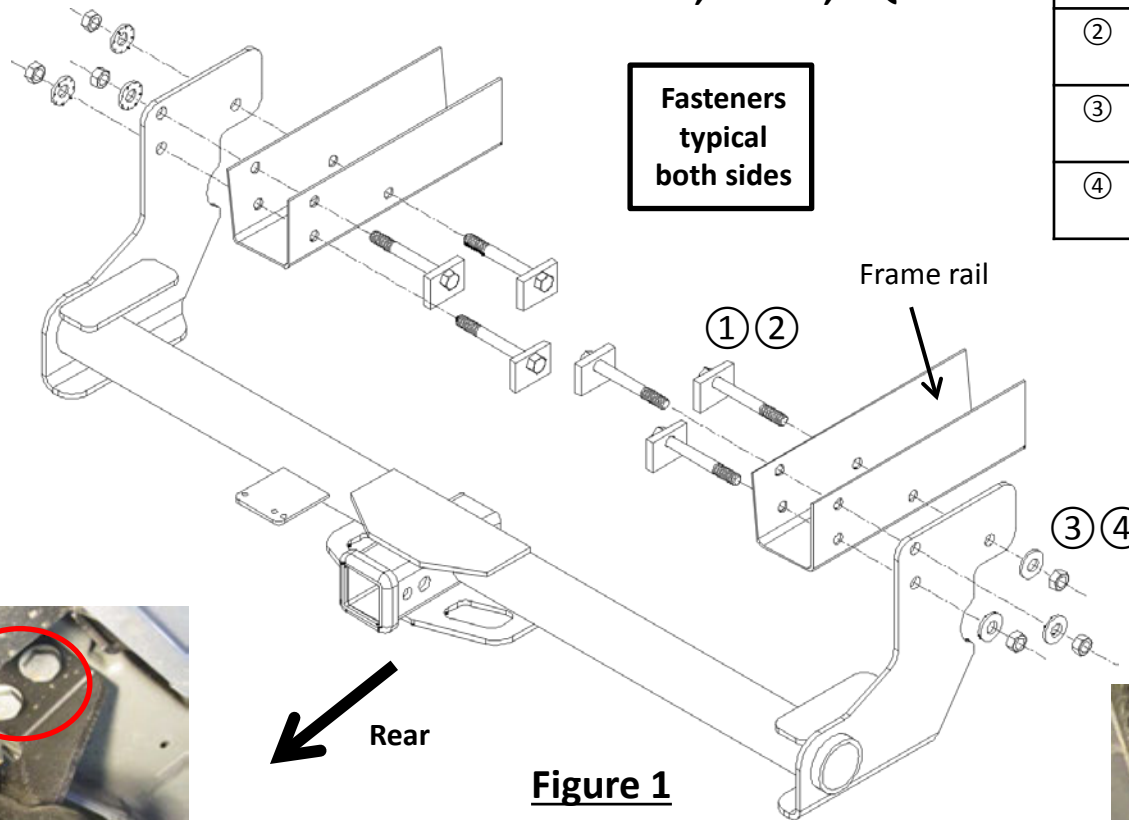


Figure 1

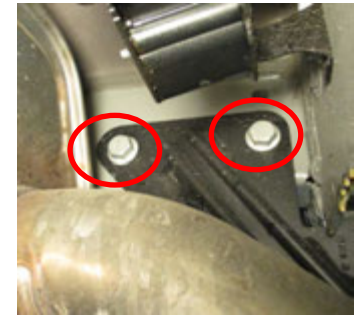


Figure 2b



Figure 2c

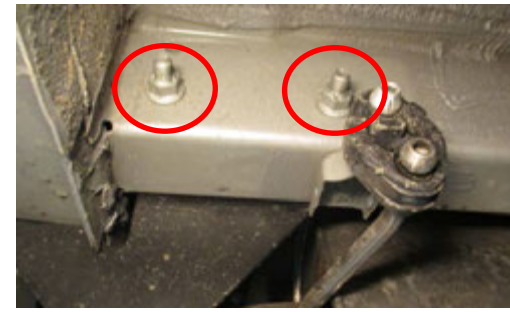
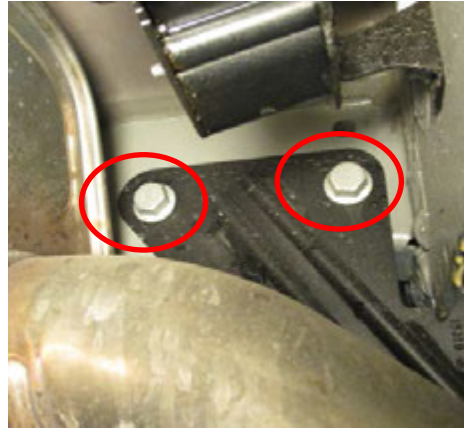
- Tow hook removal** - use 16mm and 18 mm socket to remove (2) short bolts, (2) long bolts, and (2) flange nuts from tow hook on passenger side, see **Figure 2a, 2b, 2c**. Return fasteners and tow hook to vehicle owner.
- Hitch installation** - raise the hitch into position and align bracket holes to outside frame rail holes. Inset bolt ① and block ② from inside of frame rail holes to the bracket holes, and loosely secure conical washer ③ and nut ④ to the hitch, see **Figure 1**.
- Tighten all M12 fasteners with torque wrench to 68 Lb.-Ft. (92 N*M).**

⚠ Proper torque is needed to keep the hitch secure to the vehicle when towing.

Note: check hitch frequently, making sure all fasteners and ball are properly tightened. If hitch is removed, plug all holes in trunk pan or other body panels to prevent entry of water and exhaust fumes. A hitch or ball which has been damaged should be removed and replaced. Observe safety precautions when working beneath a vehicle and wear eye protection. Do not cut access or attachment holes with a torch.

This product complies with safety specifications and requirements for connecting devices and towing systems of the state of New York, V.E.S.C. Regulation V-5 and SAE J684.

1. Tow hook removal - use 16mm and 18 mm socket to remove (2) short bolts, (2) long bolts, and (2) flange nuts from tow hook on passenger side, see **Figure 2a, 2b, 2c**. Return fasteners and tow hook to vehicle owner.



2. Hitch installation - raise the hitch into position and align bracket holes to outside frame rail holes. Inset bolt ① and block ② from inside of frame rail holes to the bracket holes, and loosely secure conical washer ③ and nut ④ to the hitch, see **Figure 1**.

3. Tighten all M12 fasteners with torque wrench to 68 Lb.-Ft. (92 N*M).

▲ Proper torque is needed to keep the hitch secure to the vehicle when towing.

