



Installation Instructions

PART NUMBERS: 65071, CQT65071

Applications:

Years	Make	Models
2015-Current*	Chevrolet	Colorado
2015-Current*	GMC	Canyon

Installation Time: **30 min**

The time listed above is the average time for professional installers. If you do not feel comfortable performing this installation on your own or are in need of assistance, please contact a professional installer.



Representative Vehicle Photo

Equipment Required:

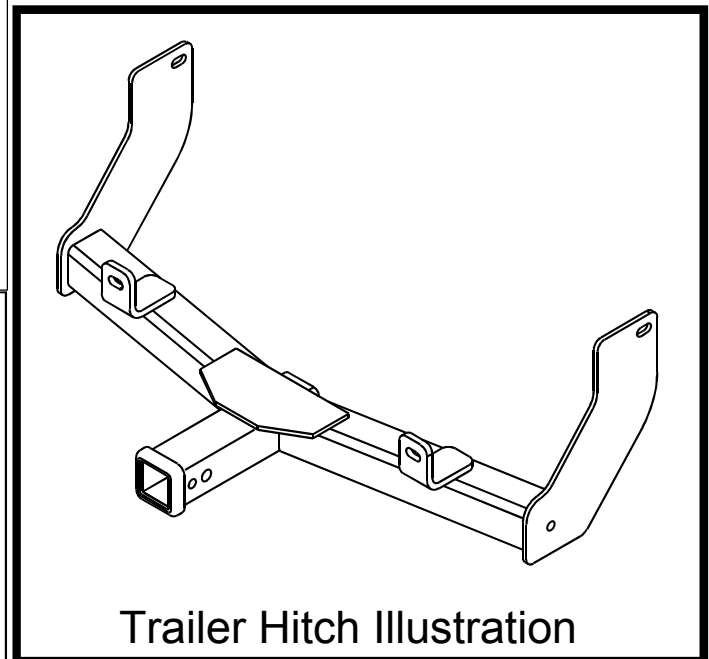
Safety Glasses	Ratchet	15 mm 11/16" 3 / 4 " Sockets	11/16" Wrench	Torque Wrench
Utility Knife	Marker	Tape Measure		

**DO NOT EXCEED LOWER OF TOWING VEHICLE
MANUFACTURER'S RATING OR:**

CARGO CAPACITY – Do not exceed
500 LB. (227 Kg) or Truck Front
Gross Axle Weight Rating, (GAWR).

9,000 lb.
(4086 Kg)

MAXIMUM WINCH LINE PULL



Trailer Hitch Illustration

Installation Instructions

PART NUMBERS: 65071, CQT65071

Fastener Kit: 65071F

Qty.	Part Description	Image
① Qty. (2)	Carriage bolt ½-13 x 1.75 GR5	
② Qty. (2)	Spacer Block .250 x 1.0 x 3.0	
③ Qty. (2)	Conical washer ½"	
④ Qty. (2)	½-13 Hex nut	
⑤ Qty. (2)	Carriage bolt 7/16-14 X 1.50 GR5	
⑥ Qty. (2)	Special Washer .109" x .88 x 2.0	
⑦ Qty. (2)	Conical washer 7/16"	
⑧ Qty. (2)	7/16-14 Hex nut	

Fasteners
typical
both sides

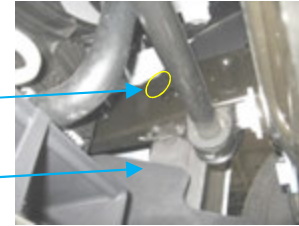
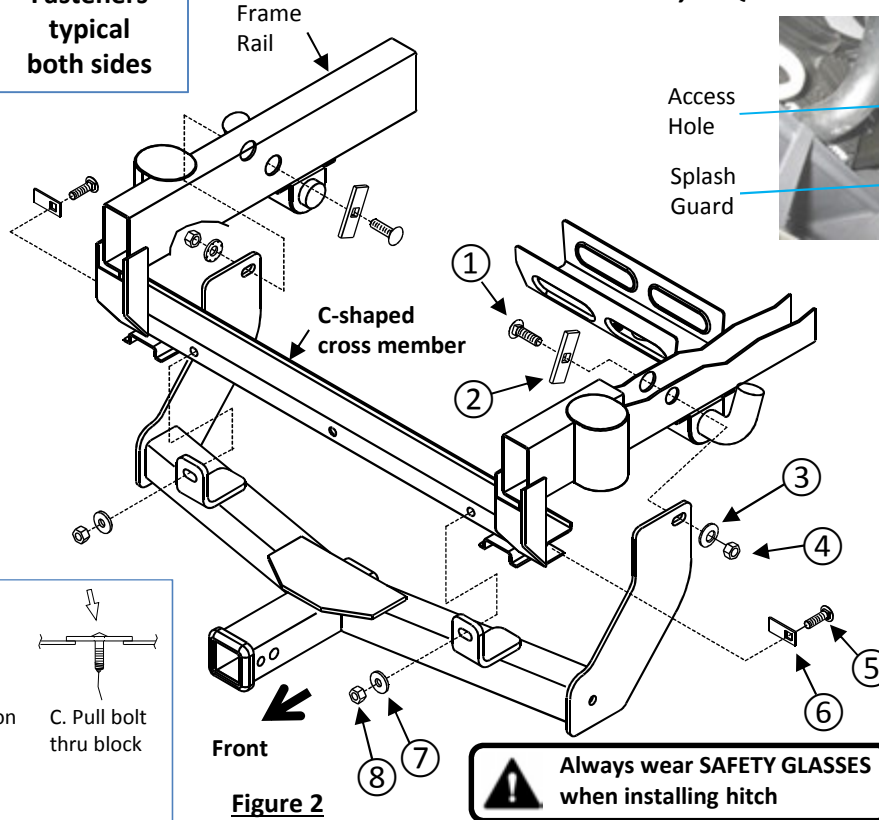


Figure 4

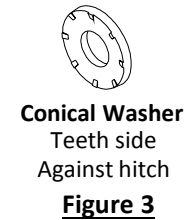


Figure 3



Figure 2a

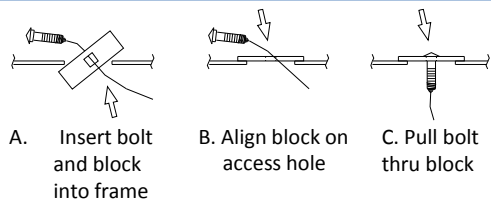


Figure 2b

Always wear SAFETY GLASSES when installing hitch

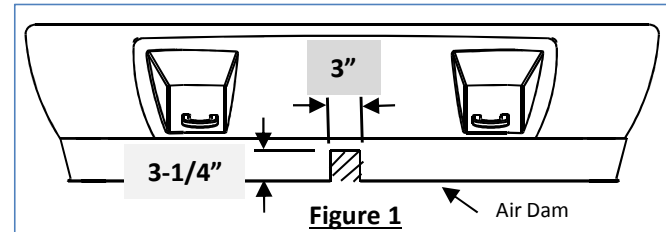


Figure 1

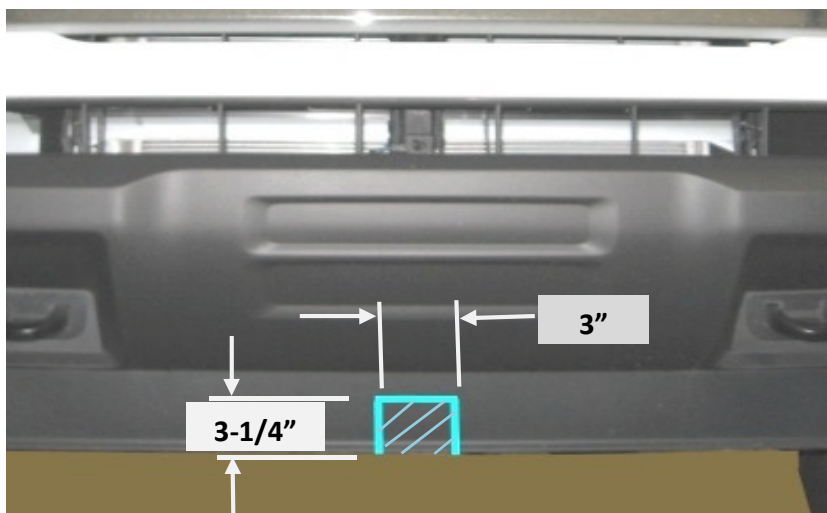
- IMPORTANT NOTE!** The lower part of the bumper air dam requires trimming to install hitch. Consult with vehicle owner before proceeding with installation.
- Trim Air Dam** - Mark a 3" wide x 3-1/4" tall area in the center of lower air dam. See figure 1. Using a utility knife, carefully trim the air dam.
 - Loosen Splash Guard** - Remove the (2) rearmost M10 bolts from plastic splash guard. Do not remove the (2) forward bolts.
 - Install fasteners into C-shaped Cross Member** - Using the 7/16 pull wire provided, install the 7/16 carriage bolts & special washers into the existing holes in the cross member. Leave pull wires attached temporarily.
 - Install hitch forward attachments** - Raise hitch into position, feed the pull wires through the slots in hitch, pull the carriage bolts through holes in cross member and hitch. See figures 2, 2a and 2b. While holding the thread of carriage bolt, remove the pull wire and loosely install the 7/16" conical washer and hex nut on the carriage bolt, both sides.
 - Lower the Splash Guard** - Carefully pull the splash guard down to allow access to the existing access hole on the inside of vehicle frame. See figure 4.
 - Install fasteners into Frame Rail** - Using the ½ pull wires provided, install the ½" carriage bolt and 1" x 3" spacer block into the access hole and through the hole on the outside of the frame. Leave pull wire attached temporarily.
 - Install hitch rear attachments** - Rotate the hitch into position and feed the pull wire through the outer hole in frame and slot in hitch, both sides. While holding the thread of carriage bolt, remove the pull wire and loosely install the 1/2" conical washer and hex nut on the carriage bolt, both sides.
 - Tighten all 7/16-14 Gr5 fasteners with torque wrench to 50 Lb.-Ft. (68 N*M)**
 - Tighten all ½-13 Gr5 fasteners with torque wrench to 75 Lb.-Ft. (102 N*M)**
- Proper torque is needed to keep the hitch secure to the vehicle when towing.**
- Reinstall the splash guard using the two (2) factory M10 bolts.

Note: check hitch frequently, making sure all fasteners and ball are properly tightened. If hitch is removed, plug all holes in trunk pan or other body panels to prevent entry of water and exhaust fumes. A hitch or ball which has been damaged should be removed and replaced. Observe safety precautions when working beneath a vehicle and wear eye protection. Do not cut access or attachment holes with a torch.

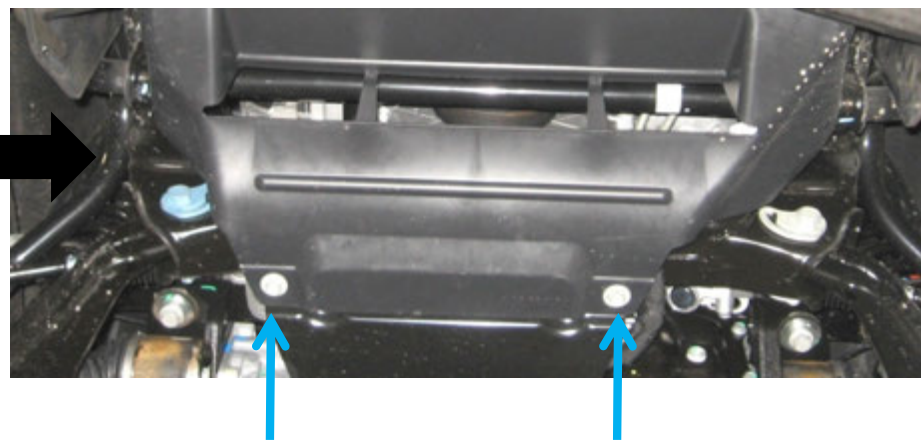
This product complies with safety specifications and requirements for connecting devices and towing systems of the state of New York, V.E.S.C. Regulation V-5 and SAE J684.

IMPORTANT NOTE! The lower part of the bumper air dam requires trimming to install hitch. Consult with vehicle owner before proceeding with installation.

- 1. Trim Air Dam** - Mark a 3" wide x 3-1/4" tall area in the center of lower air dam. Using a utility knife, carefully trim the air dam.



- 2. Loosen Splash Guard** - Remove the (2) rearmost M10 bolts from plastic splash guard. Do not remove the (2) forward bolts.



- 3. Install fasteners into C-shaped Cross Member** - Using the 7/16 pull wire provided, install the 7/16 carriage bolts & special washers into the existing holes in the cross member. Leave pull wires attached temporarily.



- 4. Install hitch forward attachments** - Raise hitch into position, feed the pull wires through the slots in hitch, pull the carriage bolts through holes in cross member and hitch. While holding the thread of carriage bolt, remove the pull wire and loosely install the 7/16" conical washer and hex nut on the carriage bolt, both sides.



5. **Lower the Splash Guard** - Carefully pull the splash guard down to allow access to the existing access hole on the inside of vehicle frame.



6. **Install fasteners into Frame Rail** - Using the ½ pull wires provided, install the ½" carriage bolt and 1" x 3" spacer block into the access hole and through the hole on the outside of the frame. Leave pull wire attached temporarily.



7. **Install hitch rear attachments** - Rotate the hitch into position and feed the pull wire through the outer hole in frame and slot in hitch, both sides. While holding the thread of carriage bolt, remove the pull wire and loosely install the 1/2" conical washer and hex nut on the carriage bolt, both sides.



8. **Tighten all 7/16-14 Gr5 fasteners with torque wrench to 50 Lb.-Ft. (68 N*M)**
9. **Tighten all ½-13 Gr5 fasteners with torque wrench to 75 Lb.-Ft. (102 N*M)**
10. Reinstall the splash guard using the two (2) factory M10 bolts.

