



Installation Instructions

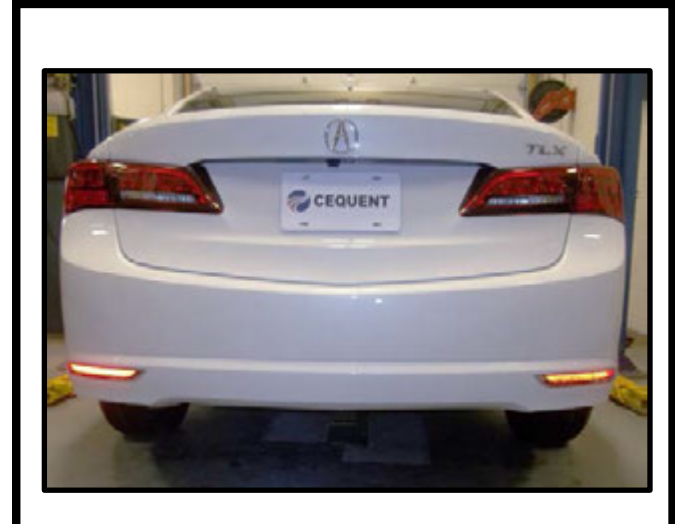
PART NUMBERS: 24942, 77329, CQT24942

Applications:

Years	Make	Models
2016-Current*	Acura	TLX

Installation Time: **60 Min.**

The time listed above is the average time for professional installers. If you do not feel comfortable performing this installation on your own or are in need of assistance, please contact a professional installer.



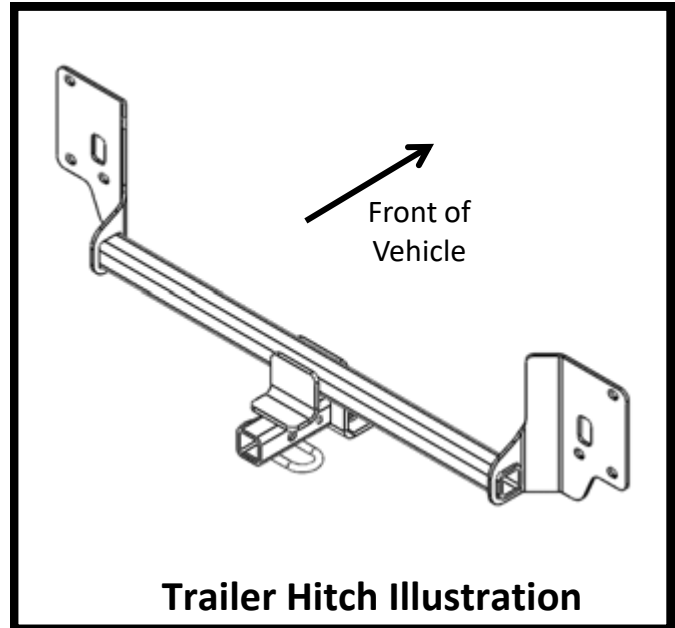
Representative Vehicle Photo

Equipment Required:

 Safety Glasses	 Ratchet	 10 mm 12mm 11/16" Sockets	 Torque Wrench	 Utility Knife	 Pliers
 Short Philip Screwdriver	 Small Head Screw Driver	 3-6" Socket Extension	 Tape Measure	 Tape or Marker	 Marker

DO NOT EXCEED LOWER OF TOWING VEHICLE MANUFACTURER'S RATING OR:

Hitch Type	Max Gross Trailer Weight	Max Tongue Weight
Weight Carrying	2000 lb. (908 kg)	200 lb. (90 kg)
Weight Distributing	X	X



Trailer Hitch Illustration



Always wear **SAFETY GLASSES** when installing hitch

Installation Instructions

PART NUMBERS: 24942, 77329, CQT24942




(Sold Separately)

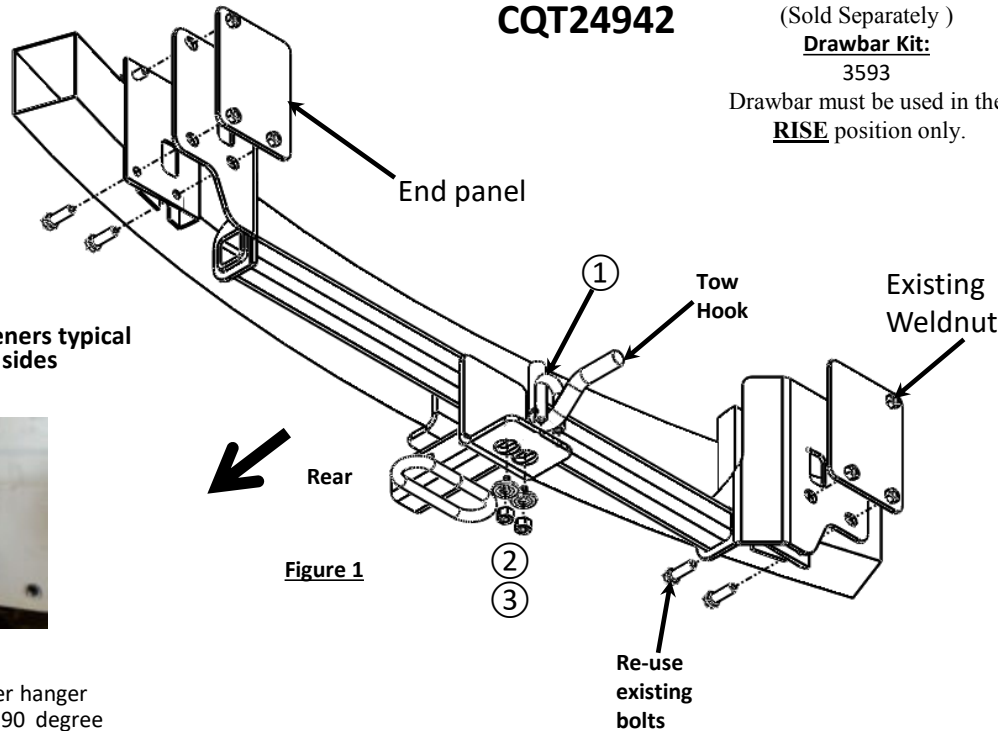
Drawbar Kit:

3593

Drawbar must be used in the **RISE** position only.

Fastener Kit : 24942F

①	Qty. (1)	U-BOLT 3/8-16 GR5	
②	Qty. (2)	Conical washer 3/8"	
③	Qty. (2)	Hex nut 3/8-16	



Teeth side against hitch

Note: Fasteners typical both sides



Figure 2

Using pliers bend bumper hanger support to approximately 90 degree for clearance.

Figure 1

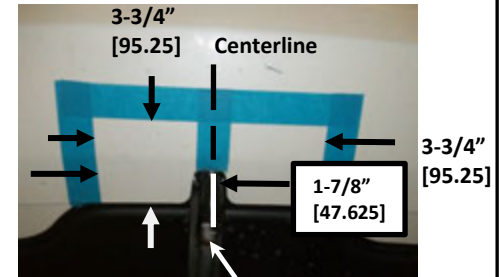



Figure 3

Fascia trimming

1. Remove plastic rivet – Remove the (2) plastic rivets that fasten the fascia tabs to the vehicle and trunk pan. Note: Remove the center of the rivet with a flat screwdriver. Keep for re-installation.
2. Open trunk remove tail lights and gasket – remove the plastic cover disc covering the screw on the tail light and fascia attachment to trunk with small screwdriver (3) each side. Remove the fasteners with 10mm socket. Remove lower trunk gasket. To remove tail light gently push rearward on tail lights at the back of the light while gently pulling outward from the forward end. Disconnect the wiring. Set aside.
3. Remove lower rear fascia – remove (2) philip screws in wheel well. Both sides. Remove (1) philip screw each side, located inside fascia at the lower attaching points between rear fascia and rear side panel of vehicle. Both sides. Gently separate the lower fascia trim from the rear side panel pulling the trim upward (if necessary apply minimum pressure to tabs located on the inside of the rear fascia. At the tail lights apply gentle pressure to support bracket tabs. Continue to gently pull on fascia while lifting upward from the bottom of the fascia. Carefully set the rear fascia aside.
4. Remove bumper - remove bumper using 12mm socket (6) bolts. Carefully set the bumper aside. Using pliers bend bumper hanger support to approximately 90 degree for clearance. See Figure 2
5. **Hitch installation** – Hang the U-bolt on the tow hook. Raise the hitch and hang it on the bumper support on the end panel. Raise the bumper to sandwich the hitch, align the holes and reinstall the original bolts removed in step 4. Tighten to hold hitch in place. Install remaining fastener for the tow hook.
6. **Tighten all M8 fasteners with torque wrench to 20 Lb.-Ft. (27 N*M) and all 3/8 GR 5 fasteners with torque wrench to 30 Lb.-Ft. (41 N*M)**
 -  Proper torque is needed to keep the hitch secure to the vehicle when towing.
7. Trim fascia- locate the center of bottom panel (tow hook) and trim 3-3/4" x 3-3/4" wide area, see Figure 3. Recommend radius in corners.
8. Re-install fascia - Reinstall all fasteners , fascia and taillights removed in Step 1 - 3.

Note: check hitch frequently, making sure all fasteners and ball are properly tightened. If hitch is removed, plug all holes in trunk pan or other body panels to prevent entry of water and exhaust fumes. A hitch or ball which has been damaged should be removed and replaced. Observe safety precautions when working beneath a vehicle and wear eye protection. Do not cut access or attachment holes with a torch.

This product complies with safety specifications and requirements for connecting devices and towing systems of the state of New York, V.E.S.C. Regulation V-5 and SAE J684.

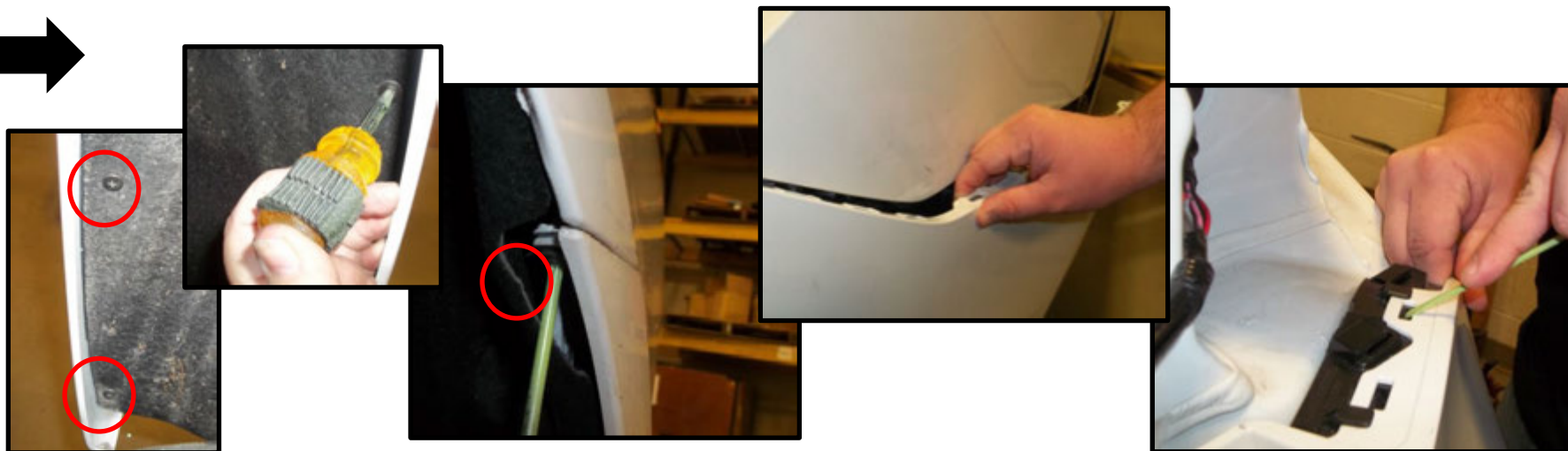
1. Remove plastic rivet – Remove the (2) plastic rivets that fasten the fascia tabs to the vehicle and trunk pan. Note: Remove the center of the rivet with a flat screwdriver. Keep for re-installation.



2. Open trunk remove tail lights and gasket – remove the plastic cover disc covering the screw on the tail light and fascia attachment to trunk with small screwdriver (3) each side. Remove the fasteners with 10mm socket. Remove lower trunk gasket. To remove tail light gently push rearward on tail lights at the back of the light while gently pulling outward from the forward end. Disconnect the wiring. Set aside.



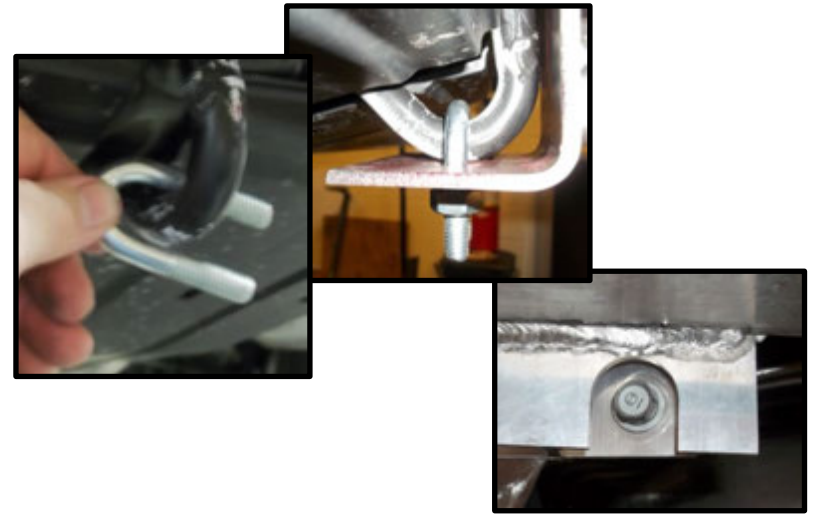
3. Remove lower rear fascia – remove (2) philip screws in wheel well. Both sides. Remove (1) philip screw each side, located inside fascia at the lower attaching points between rear fascia and rear side panel of vehicle. Both sides. Gently separate the lower fascia trim from the rear side panel pulling the trim upward (if necessary apply minimum pressure to tabs located on the inside of the rear fascia). At the tail lights apply gentle pressure to support bracket tabs. Continue to gently pull on fascia while lifting upward from the bottom of the fascia. Carefully set the rear fascia aside.



4. Remove bumper - remove bumper using 12mm socket (6) bolts. Carefully set the bumper aside. Using pliers bend bumper hanger support to approximately 90 degree for clearance.



5. Hitch installation – Hang the U-bolt on the tow hook. Raise the hitch and hang it on the bumper support on the end panel. Raise the bumper to sandwich the hitch, align the holes and reinstall the original bolts removed in step 4. Tighten to hold hitch in place. Install remaining fastener for the tow hook.

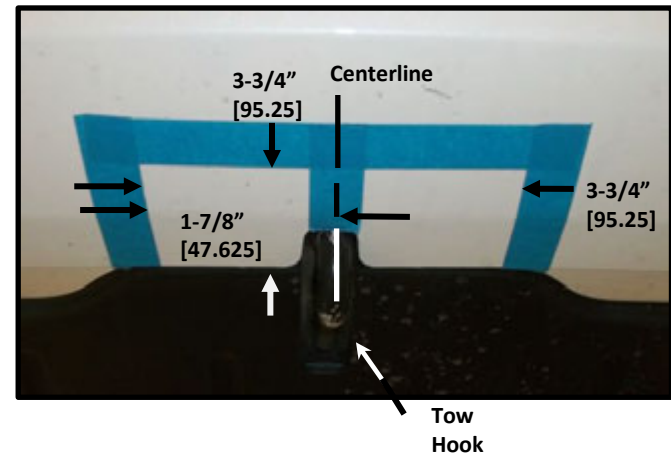


6. Tighten all M8 CL8 fasteners with torque wrench to 20 Lb.-Ft. (27 N*M) and all 3/8 GR 5 fasteners with torque wrench to 30 Lb.-Ft. (41 N*M)

⚠ Proper torque is needed to keep the hitch secure to the vehicle when towing.



7. Trim fascia- locate the center of bottom panel (tow hook) and trim 3-3/4" x 3-3/4" wide area, see Figure 3. Recommend radius in corners.



8. Re-install fascia - Reinstall all fasteners , fascia and tail light S removed in Step 1 - 3.