



25,000 lb Square Jack

Read, Understand, Follow and Save These Instructions

- Read, understand and follow all instructions before installing and using this product. Never allow anyone unfamiliar with the operating instructions to use this product.
- Read, understand and follow all instructions provided by the manufacturer of the product(s) that this product will be installed on.
- Installation of this product must conform to the following mounting instructions only.
- Save these instructions for use as a reference in the future.



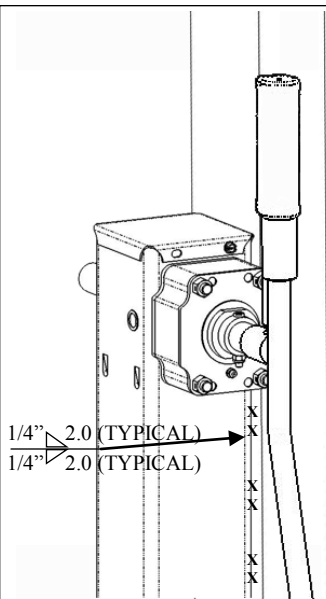
WARNING

Failure to follow these warnings and instructions may result in property damage, serious bodily injury, and/or death.

- Purchaser/owner must ensure that product is installed according to these instructions. Purchaser/owner must not alter or modify product.
- Operator and bystanders should never position any part of body under any portion of this product or the load being supported.
- Fully retract and/or rotate jack before towing.
- When using the drop leg, make certain the drop leg pin is fully inserted before using the jack.
- Do not allow children to play on or around this product or the load being supported.
- Secure the load, vehicle and trailer from rolling (by blocking wheels) when operating jack or coupling trailer.
- Jack capacity is limited to the lesser of the jack, footplate, or caster wheel capacity.
- Never exceed maximum rated capacity. Refer to stamped markings or decals on product to obtain rated capacity.
- These jacks are designed for vertical loading. Excessive side forces may cause jack failure and must be avoided.
- If this product has a pivot tube mount, make certain the pivot pin is fully inserted through both sides on the pivot tube and the pivot mount.
- If this product has a drop leg, never attempt to adjust the drop leg when the jack is under load.
- These jacks are designed for mounting to flat surfaces only.
- Keep clear of pinch point at drop leg pin. The drop leg will naturally drop or retract very quickly depending on model.
- All welding must be performed by an AWS certified welder. Always replace bent, broken, or worn parts before using this product.

Installation Instructions

Before mounting the jack confirm that there will be no interference from the tow vehicle, tongue, ground, and any other mounted accessories while stationary or in motion. Before installing, check for interference in all positions including handle swing (in both gears, if applicable) and swivel positions if applicable. Check for interference again after installation is complete.



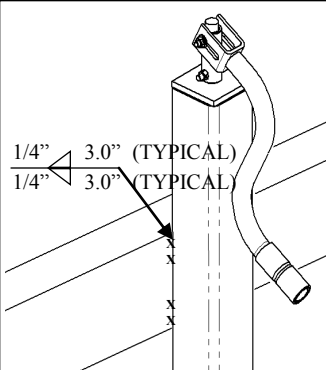
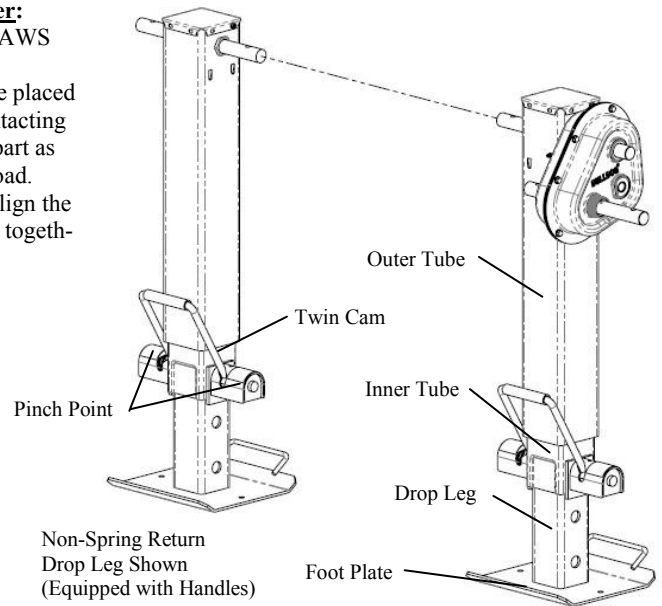
Direct Mount to Load-Bearing Member:

- 1) All welding must be performed by an AWS certified welder.
- 2) Three 2" long 1/4" fillet welds must be placed on both sides of the jack along the contacting surface. The welds should be as far apart as possible to maximize strength under load.
- 3) If mounting in a tandem application, align the jacks carefully so they raise and lower together and share the load equally.

2-Speed Shift Pattern:

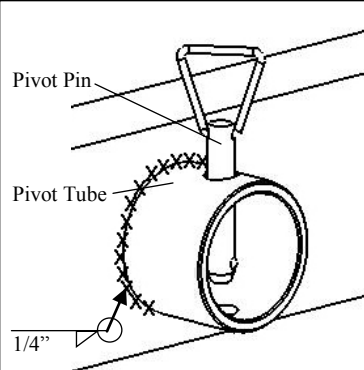
The jack handle moves 5/8"-3/4" while shifting. This clearance must be accounted for during installation.

- High gear is engaged when the shaft is pushed in.
- Low gear is engaged when the shaft is pulled out.



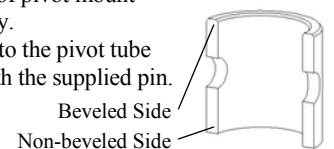
Direct-Mount:

- 1) All welding must be performed by an AWS certified welder.
- 2) Place the jack at the desired location. Weld 3" in 2 locations on both sides of the jack using a 1/4" fillet weld.



Weld-on Pivot Tube Mounting Instructions:

- 1) All welding must be performed by an AWS certified welder.
- 2) The non-beveled side of the pivot tube is welded to the tongue.
- 3) Place the weld-on pivot tube against the tongue and weld all around with a 1/4" fillet weld. Align one set of pivot mount holes vertically.
- 4) Mate the jack to the pivot tube and secure with the supplied pin.



Drop Leg Operation Instructions

NEVER ATTEMPT TO MOVE DROP LEG HANDLE WHEN THERE IS ANY LOAD ON THE JACK. DOING SO COULD CAUSE THE TRAILER TO MOVE SUDDENLY.

SPRING RETURN DROP LEG WILL NATURALLY RETRACT VERY QUICKLY.

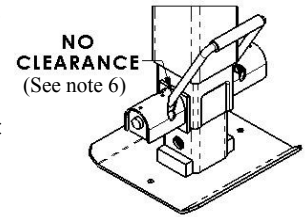
NON-SPRING RETURN DROP LEG WILL NATURALLY FALL. KEEP CLEAR OF MOVING DROP LEG.

SPRING RETURN DROP LEG OPERATION:

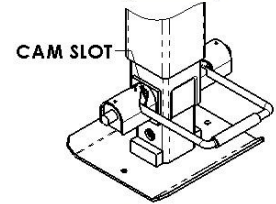
- 1) Verify that the jack is not supporting any load.
- 2) If extended, place your foot on foot plate to control the return of the drop leg.
- 3) Disengage drop leg pins by rotating handle to the disengaged position.
- 4) Carefully move the drop leg to the desired position using your foot.
- 5) Engage drop leg pins by rotating handle to the engaged position and into the desired adjustment holes.
- 6) Verify that the drop leg pins are fully inserted into the jack by checking for no clearance between the handle and the cam slot of the housing. If you see clearance, you must adjust the drop leg to fully seat the pins into the hole locations. If you are unable to fully engage the handle, DO NOT USE.

NON-SPRING RETURN DROP LEG OPERATION:

- 1) Verify that the jack is not supporting any load.
- 2) If retracted, grasp the handle of foot plate to control the fall of the drop leg.
- 3) Disengage drop leg pins by rotating handle to the disengaged position.
- 4) Carefully move the drop leg to the desired position using your hand.
- 5) Engage drop leg pins by rotating handle to the engaged position and into the desired adjustment holes.
- 6) Verify that the drop leg pins are fully inserted into the jack by checking for no clearance between the handle and the cam slot of the housing. If you see clearance, you must adjust the drop leg to fully seat the pins into the hole locations. If you are unable to fully engage the handle, DO NOT USE.



DROP LEG HANDLE ENGAGED (CLOSED)



DROP LEG HANDLE DISENGAGED (OPEN)

Maintenance Instructions

The following procedures should be performed at least annually unless noted otherwise: Gears, bushings, and screw of the jack must be kept lubricated. For side-wind models; apply a small amount of automotive EP2 grease with a grease gun at lubrication points found on the side of jack near the input shaft. Rotate jack handle to distribute the grease evenly. A lightweight oil must be applied to the input shaft bushings at sides of the jack or gearbox. For top-wind models; the screw-stem should be lubricated with a light-weight oil. The twin cam mechanism must be kept clean and lubricated at least monthly. Apply a lightweight oil at all oil points and apply automotive EP2 grease at cam slots.

