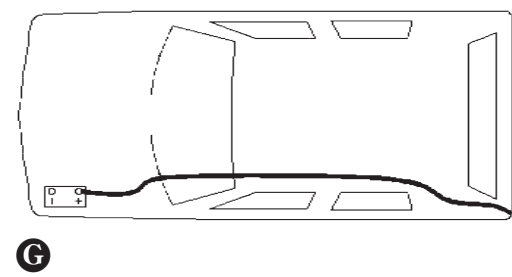
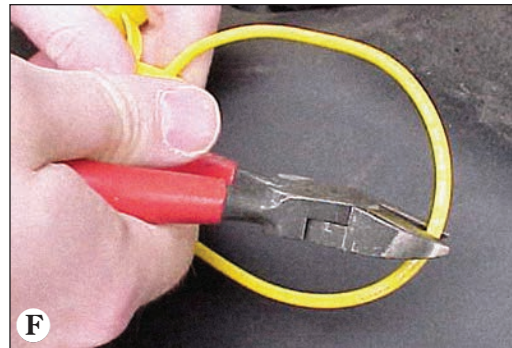
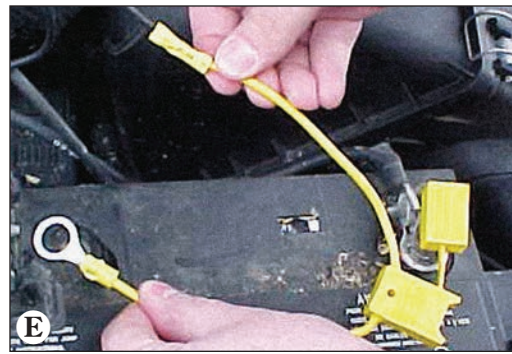
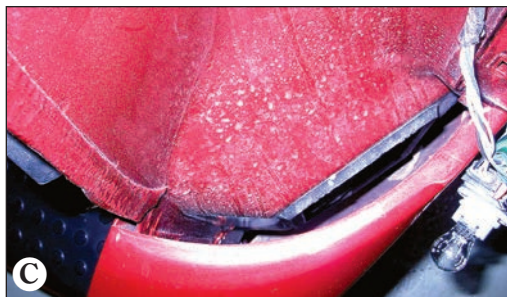


Installation Instructions

T-Connector



TOOLS NEEDED:

Trim Trim Panel Remover, Drill (3/32" Drill Bit), Philips Head Screwdriver, Test-probe, Wire Crimpers, Wire Cutters, Torx-30

1. Dodge Grand Caravan / Chrysler Town & Country / Dodge Durango

Open the rear tailgate to access the screws that hold the taillights in place. Remove the T-30 Torx screws and carefully pry the taillight housings rearward away from the vehicle, being careful not to break the alignment tabs **A**.

Jeep Patriot / Dodge Caliber

Open the tailgate and remove the vehicle's right side taillight assembly by removing the two clips holding the taillight in place. Carefully pry the housings away from the vehicle, being careful not to break the alignment tabs. Repeat for the vehicle's left side taillight assembly **B**.

2. Disconnect the vehicle wiring harness from both taillight sockets. Plug the T-Connector end with the **yellow** wire in-between the mating plugs on the driver's side taillight socket and vehicle wiring harness. All connector surfaces should be clean and free of dirt. Ensure that the connectors are fully inserted with locking tabs in place. Repeat step 4 for T-Connector end with the **green** wire.

3. On the driver's side, route the T-Connector end with the green wire and the wire with the 4-Flat connector down through the opening between the vehicle bumper and body **C**. Route the T-Connector end with green wire to the passenger's side and route the 4-Flat underneath the bumper. Route T-Connector end with green wire up through the opening on the passenger

- side, being careful to avoid any hot pipes, heat shields, the fuel tank or any other points that may pinch or brake the wire **D**. Repeat step 2 for T-Connector end with the **green** wire.
4. Locate a suitable grounding point near the connector. (Do not drill into vehicle floor or bed.) Clean dirt and rustproofing from area. Drill a 3/32" hole and secure white wire using eyelet and screw provided.
- CAUTION**
Verify what is behind any surface prior to drilling to avoid damage to the vehicle and/or personal injury. Do not drill into any exposed surfaces.
5. Disconnect the vehicle's Negative (-) battery cable. If not removed, remove the fuse from the yellow fuse holder (provided). After cutting the fuse holder wire **E**, attach the ring terminal and secure to the vehicle's Positive (+) battery cable **F**. Connect the other end of the fuse holder to the black 12 ga. wire, using the yellow butt connector (provided).
- WARNING**
Read and follow all warnings and cautions printed on the tow vehicle's battery.
6. Beginning from the front of the vehicle, route the **black** 12 ga. wire rearward along the frame rail **G**.
- WARNING**
Route the wire being careful to avoid any hot pipes, heat shields, the fuel tank or any other points that may pinch or break the wire.
7. Route the **black** 12 ga. wire to the rear driver's side. Locate the opening between the vehicle rear bumper and body allowing entry to the rear driver's side taillight area. Route the wire up through this hole and attach the black 12 ga.

- wire to the red wire from the T-Connector black box with the supplied yellow butt connector.
8. Reconnect the vehicle's Negative (-) battery cable and install the 10 amp fuse into the fuse holder from step 5.
- WARNING**
All connections must be complete for the T-Connector to function properly. Test and verify installation with a test light or trailer once installed.
9. Mount the T-Connector black box using double-sided tape provided.
- WARNING**
Make sure module is mounted so that the epoxy side of the module is pointed towards the ground to prevent any water buildup.
10. Reinstall the taillight housing assemblies, positioning the vehicle wiring harness between the housing and the vehicle body. Secure the remainder of the T-Connector harness under the bumper with cable ties provided, being careful to avoid any areas that would cut or pinch the wire.
- NOTE**
Mount 4-Flat in a suitable location under the vehicle. Bracket not included.
- WARNING**
Overloading circuit can cause fires. DO NOT exceed lower of towing manufacturer rating or:
- Max. stop/turn light: 2 per side (4.2 amps)
 - Max. tail lights: (7.5 amps)
- Read vehicle's owners manual & instruction sheet for additional information.