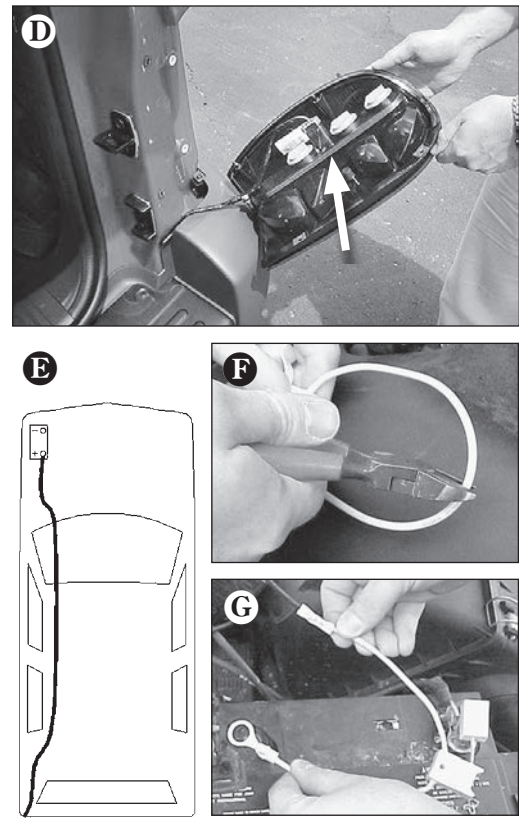
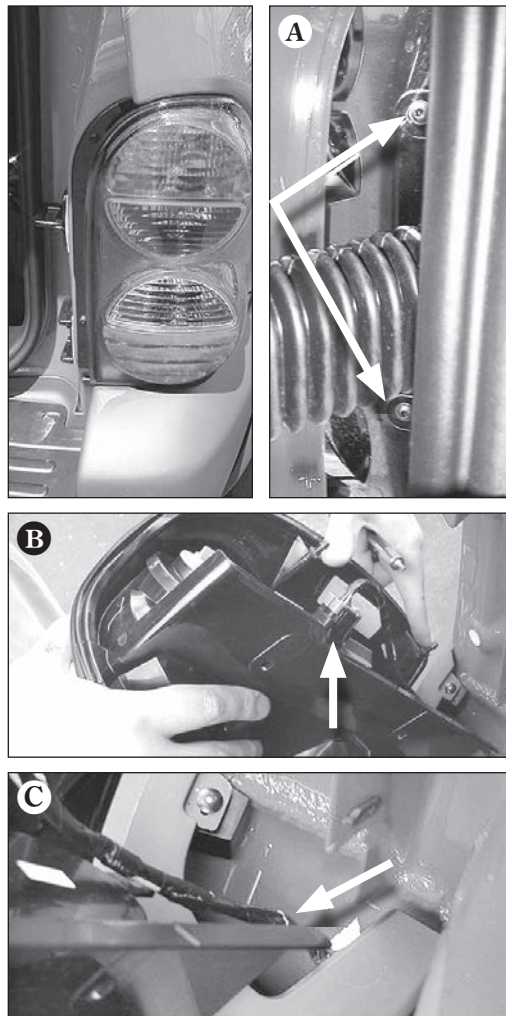


Installation Instructions

T-Connector



Jeep Liberty



TOOLS REQUIRED:

Trim Panel Remover, 10mm Socket & Ratchet or 10mm Wrench, Drill (3/32" Drill Bit), 1/4" socket, Wire Crimpers, Wire Cutters, Phillips Head, Screwdriver, Test-probe, T20 Torx

1. Open the rear glass gate and tailgate to access the screws that hold the taillights in place. The driver's side T-20 Torx screws can be located near the tailgate hinge on the side of the taillight. **A** Remove the screws and carefully pry the taillight housings rearward away from the vehicle, being careful not to break the alignment tabs.
2. Access the black housings that match the housings on the T-Connector. **B** Slide the red locking tab on the harness connector to the unlocked position and disconnect the wire harness from both taillight sockets.
3. Beginning on the driver's side, plug the T-Connector harness containing the **yellow** wire in between the vehicle's mating connectors, and slide the red locking tab into the locked position.
4. Route the harness containing the **green** wire and the 4-flat down the opening behind the taillight on the driver's side. **C** Route the 4-flat harness to the center of the vehicle. Route harness containing the **green** wire underneath the vehicle up through the opening behind the passenger's side taillight.
5. Repeat step 4 for the passenger's side using the T-Connector harness end with the **green** wire. **D**
6. Locate a suitable grounding point near the adapter such as the vehicle frame or crossmember. (Do not drill into vehicle floor or bed.) Clean dirt

and rustproofing from area. Drill a 3/32" hole and secure **white** wire using eyelet and screw provided.

⚠ CAUTION

Verify what is behind any surface prior to drilling to avoid damage to the vehicle and/or personal injury. Do not drill into any exposed surfaces.

7. On the driver's side, locate the **red** 12 ga. Power wire from the T-Connector box. Attach the **black** 12 ga. wire provided. Route the remaining wire through the opening in the taillight socket, behind the bumper. Route the **black** wire along the exterior frame or follow the existing wiring along the thresholds into the engine compartment up to the battery avoiding areas that may pinch, break or melt the wire. **E**
8. Disconnect the vehicle's Negative (-) battery cable. If not removed, remove the fuse from the yellow fuse holder (provided). After cutting the fuse holder wire, attach the ring terminal and secure to the vehicle's Positive (+) battery cable. Connect the other end of the fuse holder to the **black** 12 ga. wire, using the yellow butt connector (provided). **F** **G**
9. Reconnect the vehicle's Negative (-) battery cable and install the 15 amp fuse into the fuse holder from step 8.

⚠ WARNING

Read and follow all warnings and cautions printed on the tow vehicle's battery.

All connections must be complete for the T-Connector to function properly. Test and verify installation with a test light or trailer once installed. For initial test, reset vehicle electrical system by temporarily removing the key from the ignition. Re-insert key and turn key to the proper position.

10. Behind the taillight assembly on the Driver's side, clean a flat area using a mixture of rubbing alcohol and water.

Mount the T-Connector black box using cable ties or double-sided tape provided.

⚠ WARNING

Make sure module is mounted so that the epoxy side of the module is pointed towards the ground to prevent any water buildup. Ensure that the module is not mounted underneath the vehicle or in an area directly exposed to the elements. Damage to the module or vehicle could occur.

⚠ WARNING

Make sure that the tail light assembly can be reinstalled before mounting black box.

11. Reinstall taillight assemblies and other items removed during installation, being careful not to pinch or cut the wires.
12. Secure the remainder of the T-Connector harness with the cable ties provided, to prevent damage or rattling and being careful to avoid any areas that would pinch, cut or melt the wire.

NOTE

Mount 4-Flat in a suitable location under the vehicle.

🔥 ⚠ WARNING

Overloading circuit can cause fires. DO NOT exceed lower of vehicle manufacturer rating or:

- Max. stop/turn light: 2 per side (4.2 amps)
- Max. tail lights: (7.5 amps)

Read vehicle's owners manual & instruction sheet for additional information.