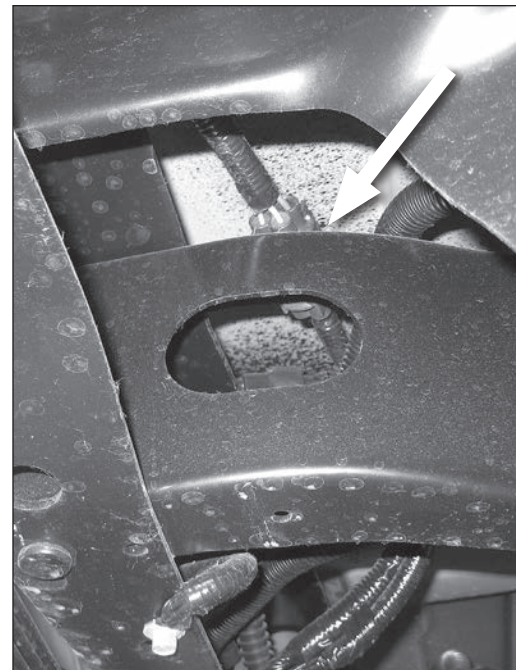
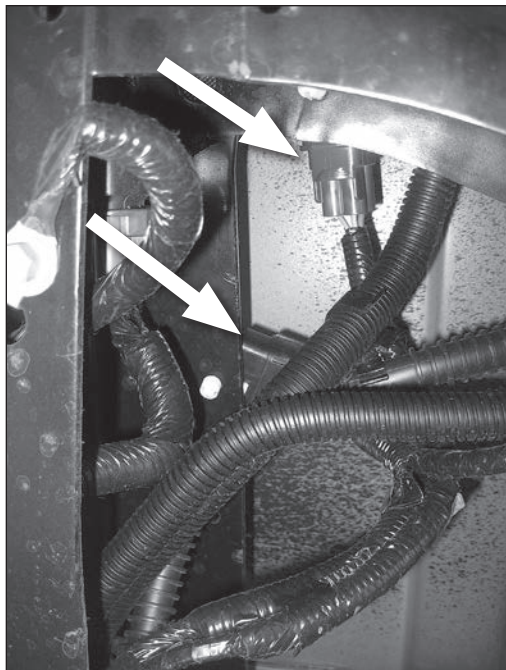


Installation Instructions

T-Connector



Ford E-150



TOOLS REQUIRED:

Test-probe

1. Locate the vehicle's wiring harness 16-Pin and 4-Pin plugs located in the rear, underneath the vehicle, inside the driver's side frame rail. This harness will have connectors that will mate to the end of the tow plugs.

NOTE

If only the 16-Pin housing is present, discontinue installation. Consult application guide for the Class I wiring harness.

2. Remove factory tow harness protective caps and check to see if the mating surface is clean and free of dirt, clean if necessary.
3. Insert the tow plugs into the connectors. Be careful not to damage the locking tabs and be sure that connectors are fully inserted with locking tabs in place.
4. Open the vehicle's hood and locate the fuse/relay box on the Driver's side near the firewall. Consulting your owner's manual, locate the Trailer Tow Battery Charge Relay location and insert the relay (provided).
5. Route the T-Connector harness along the inside of bumper toward the center of vehicle.

⚠ WARNING

Route the wire being careful to avoid any hot pipes, heat shields, the fuel tank or any other points that may pinch or break the wire.

6. Plug the 7-way socket (provided) into the Trailer Tow Harness.

⚠ WARNING

Secure all loose wires and mount the Trailer Tow Harness in an accessible location with a bracket or electrical box (not included).

⚠ WARNING

All connections must be complete for the T-Connector to function properly. Test and verify installation with a test light or trailer once installed.



⚠ WARNING

Overloading circuit can cause fires. DO NOT exceed manufacturer's fuse rating. Read vehicle's owners manual & instruction sheet for additional information.