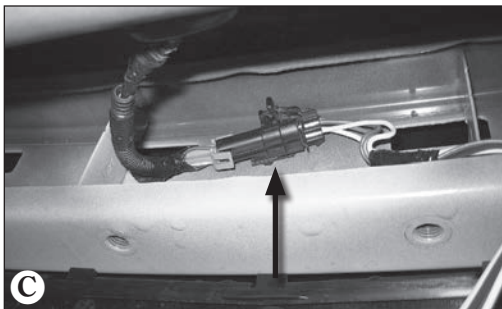
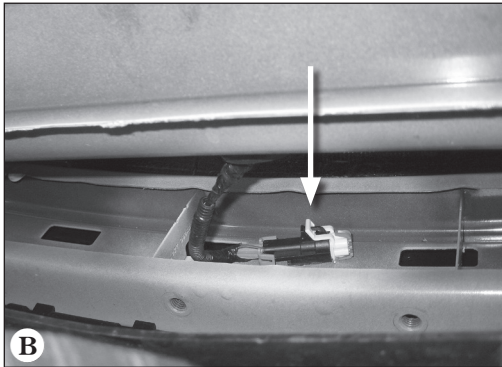


## Installation Instructions

### T-Connector



Cadillac SRX w/ Tow Package ONLY



#### TOOLS REQUIRED:

Test-probe

1. Locate the vehicle's factory tow harness connector behind the bumper **B**. This harness will have a connector that will mate to the end of the tow plug.
2. Remove factory tow harness protective cap and check to see if the mating surface is clean and free of dirt, clean if necessary **B**. Insert the tow plug into the connector. Be sure that the connectors are fully inserted **C**.

#### **⚠ WARNING**

All connections must be complete for the T-Connector to function properly. Test and verify installation with a test light or trailer once installed.

3. Secure all loose wires with cable tie provided.



#### **⚠ WARNING**

Overloading circuit can cause fires. DO NOT exceed lower of vehicle manufacturer rating or:

- Max. stop/turn light: (7.5 amps)
- Max. tail lights: (7.5 amps)

Read vehicle's owners manual & instruction sheet for additional information.