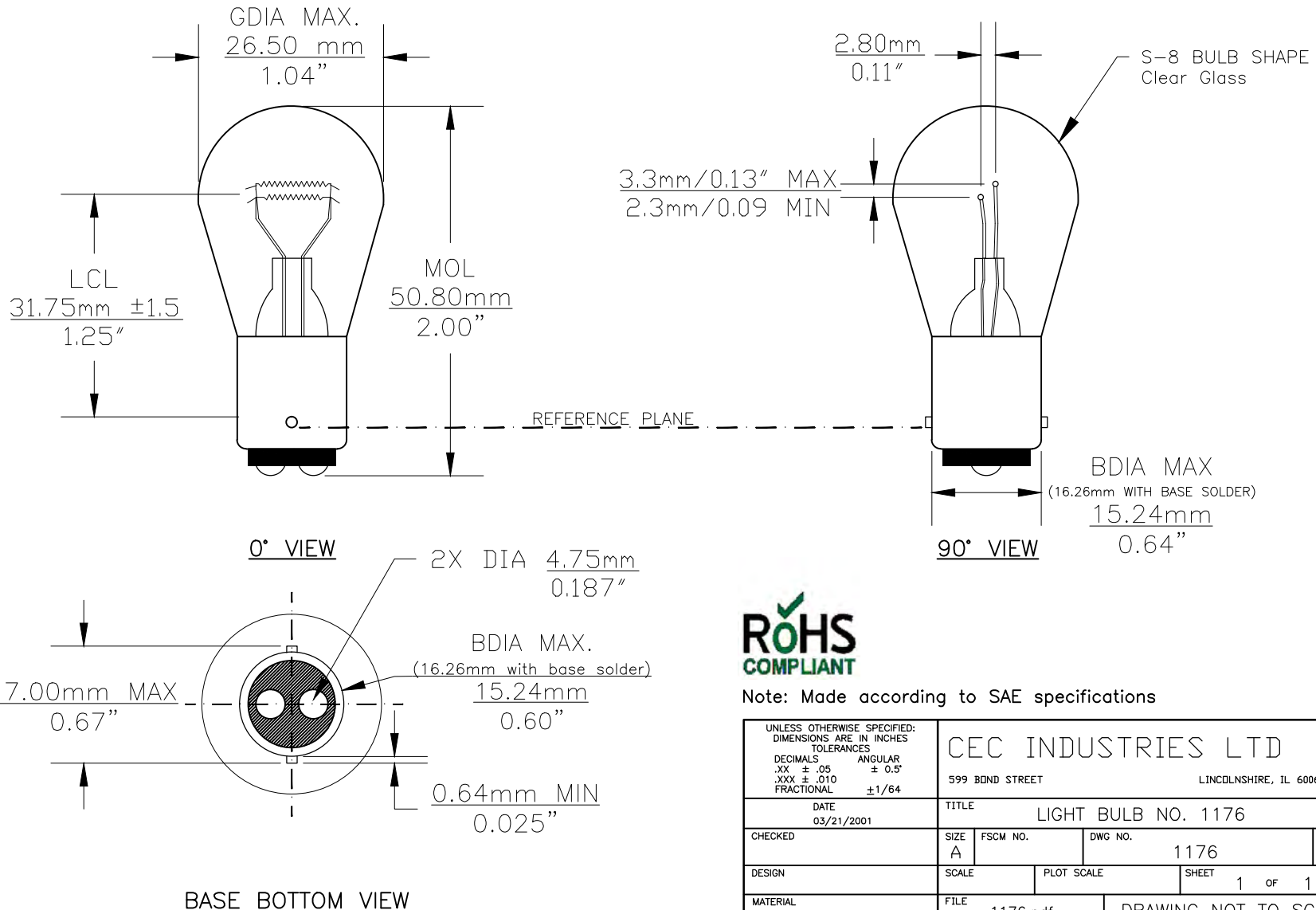




PART NO.	BASE TYPE	DESIGN VOLTS	DESIGN AMPS	MSCD	FILAMENT TYPE	AVERAGE LIFE HOURS	REVISIONS			
							REV #	DESCRIPTION	DATE	APPROVED
1176	D.C. BAYONET (BA15d)	12.8V 14.0V	1.34±10% 0.59±10%	21±15% 6±15%	C-6 C-6	300 1500	1	ISSUED	03/21/2001	E.S.
							2	SPECIFICATION UPDATES	04/15/2013	D.C.
							3	REDRAWN FOR ADDITIONAL VIEWS	10/24/2014	R.M.



Note: Made according to SAE specifications

UNLESS OTHERWISE SPECIFIED: DIMENSIONS ARE IN INCHES TOLERANCES		CEC INDUSTRIES LTD	
DECIMALS .XX ± .05	ANGULAR .XXX ± .010	599 BOND STREET	LINCOLNSHIRE, IL 60069
FRACTIONAL ±1/64		TITLE LIGHT BULB NO. 1176	
DATE 03/21/2001	CHECKED	SIZE A	FSCM NO. 1176 DWG NO. 1176 REV 3
DESIGN	SCALE	PLOT SCALE	SHEET 1 OF 1
MATERIAL	FILE 1176.pdf	DRAWING NOT TO SCALE	

Cec Industries provides the best in car bulbs equipment.