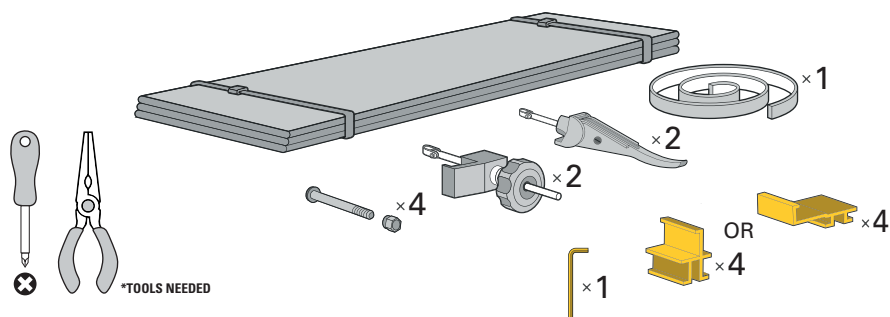


# INSTALLATION SHEET

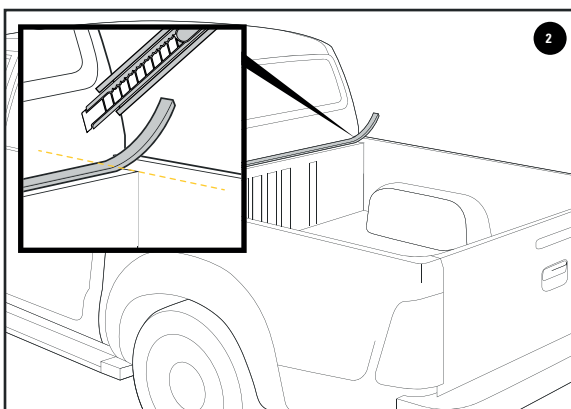
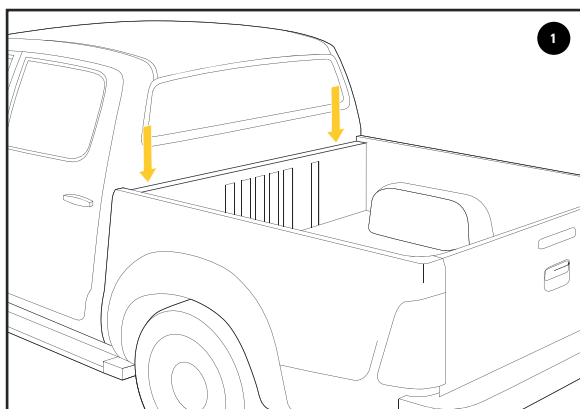
SOFT VINYL, THREE PANEL COVER



Ensure all contents are in package and not damaged prior to installation. Report any damage or missing components to customer service:

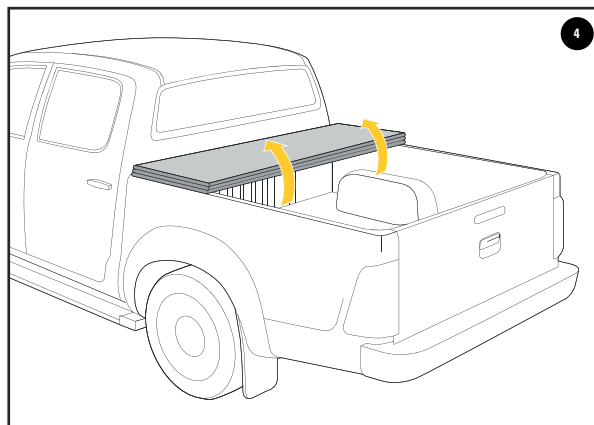
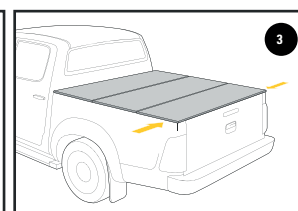
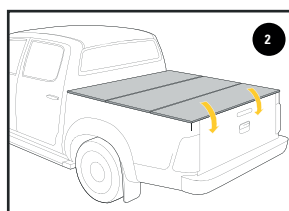
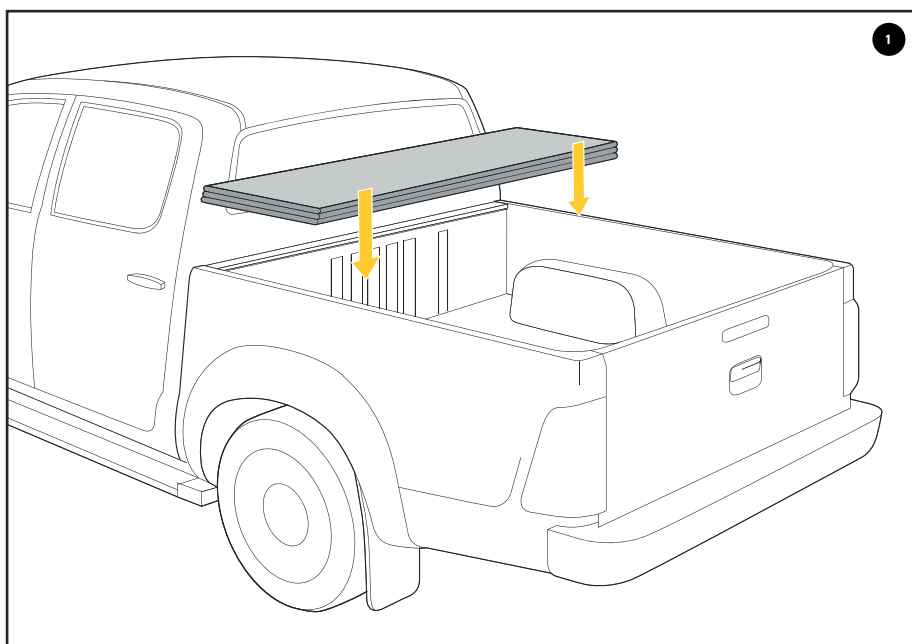


\* Items in yellow are for select vehicles only and are not included with every product. Only one type of bracket is included with select products.



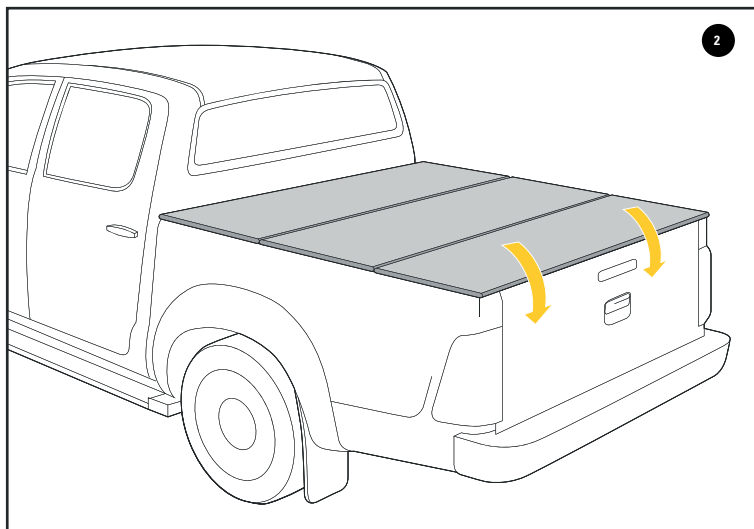
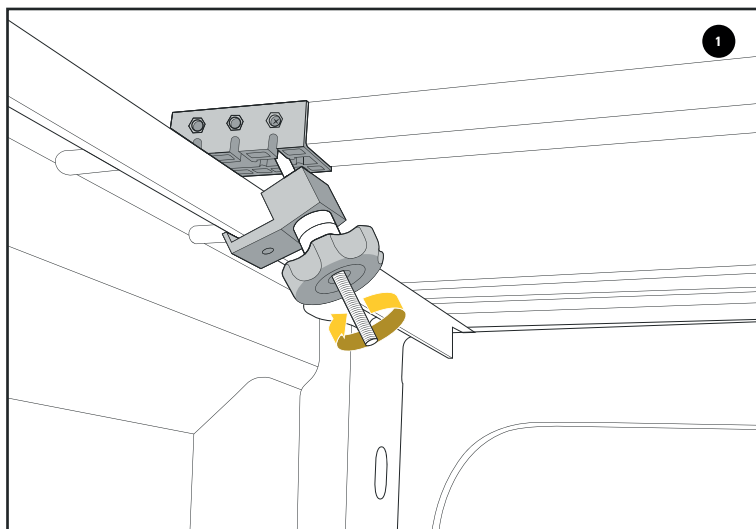
1. If the trucks front bed wall is lower then side rails, use supplied foam tape.

2. Clean & dry the area, peel adhesive backer. Install between bed rails. Cut excess.

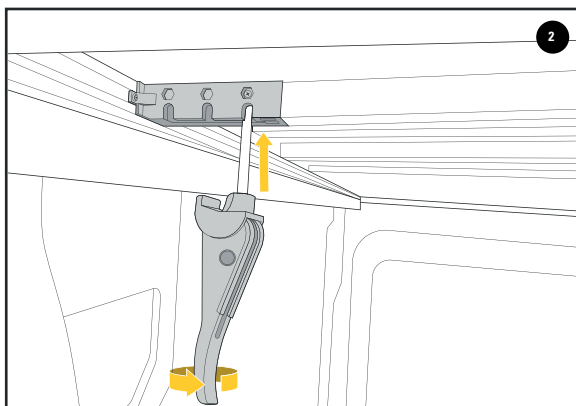
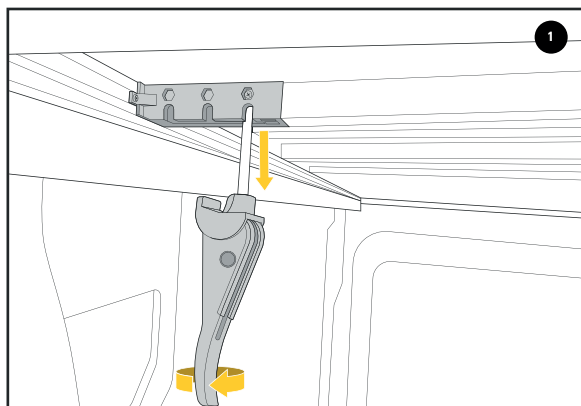


1. Place cover on bed & ensure that it is square & even on all sides.
2. Unfold the cover.
3. Make sure the cover is square & even at the tailgate.
4. Completely fold up cover again.



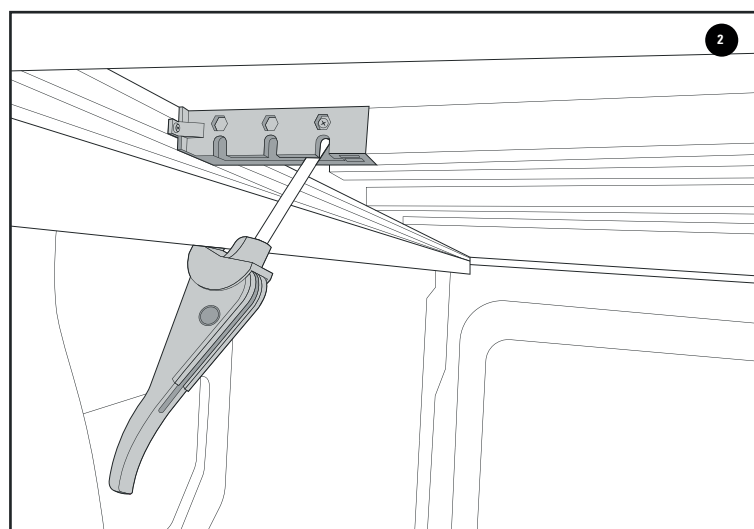
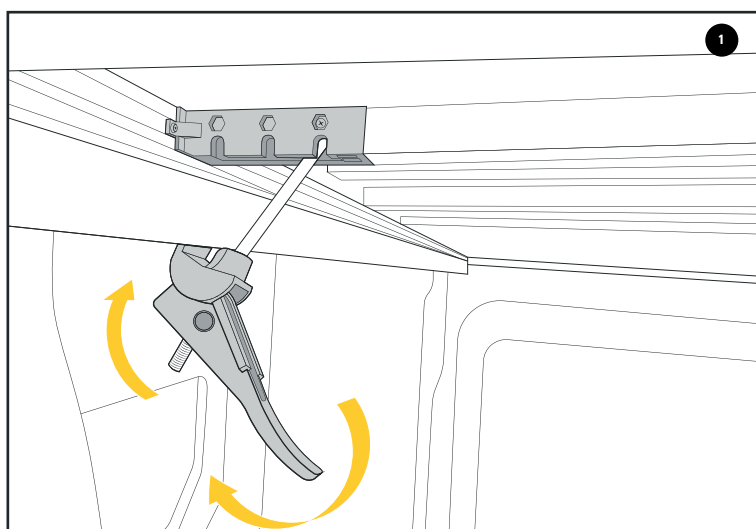


1. Place clamp jaw under bed rail lip and tighten until snug. Repeat on both sides of the tonneau cover. Check tightness frequently. 2. Completely unfold the cover.



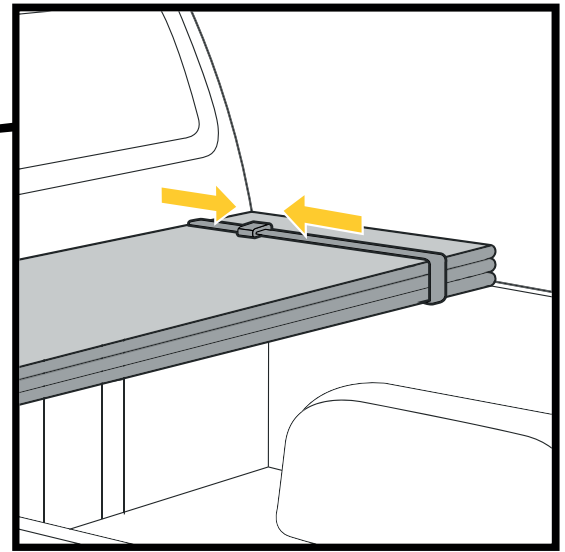
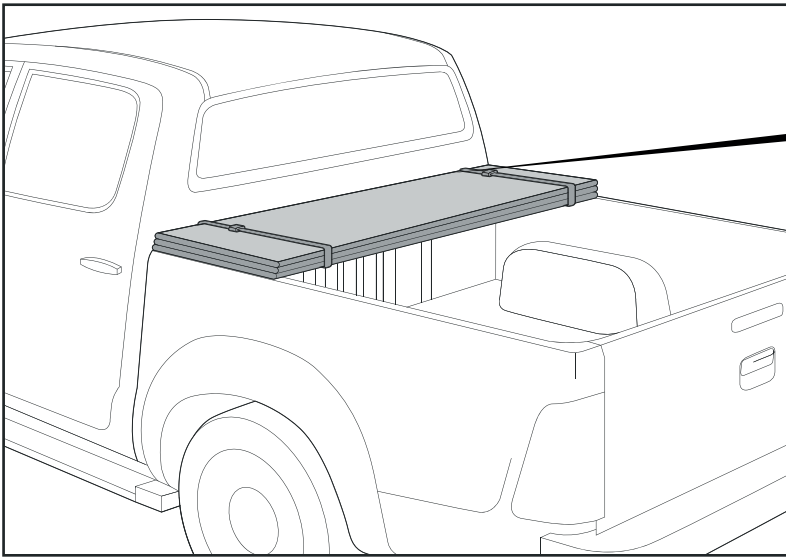
1. Rotate the latch to increase tension.
2. Rotate the latch in the opposite direction to decrease tension.

**NOTE:** *Clamp should only be snug when engaging, do not over tighten.*



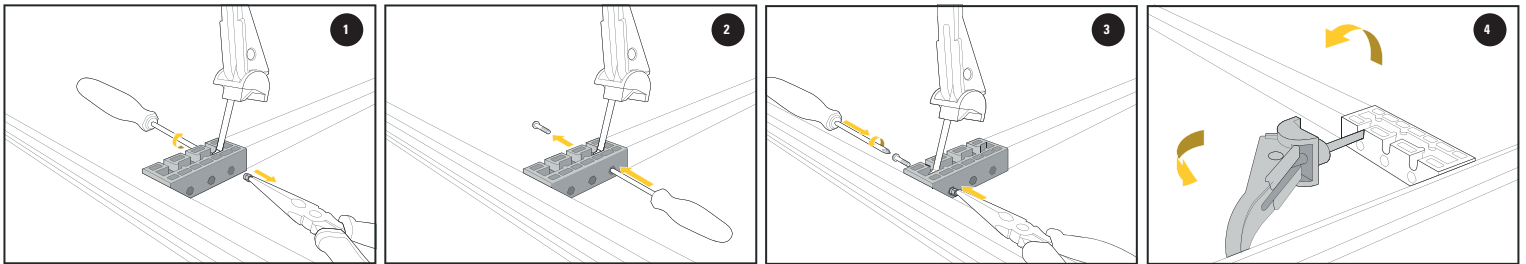
1. Place jaw under bed rail clip. 2. Rotate latch handle downward. Make sure the latch is tight and secured.

# SECURE & TIGHTEN BUCKLE



\*When folded, secure buckle, and tighten safety straps\*

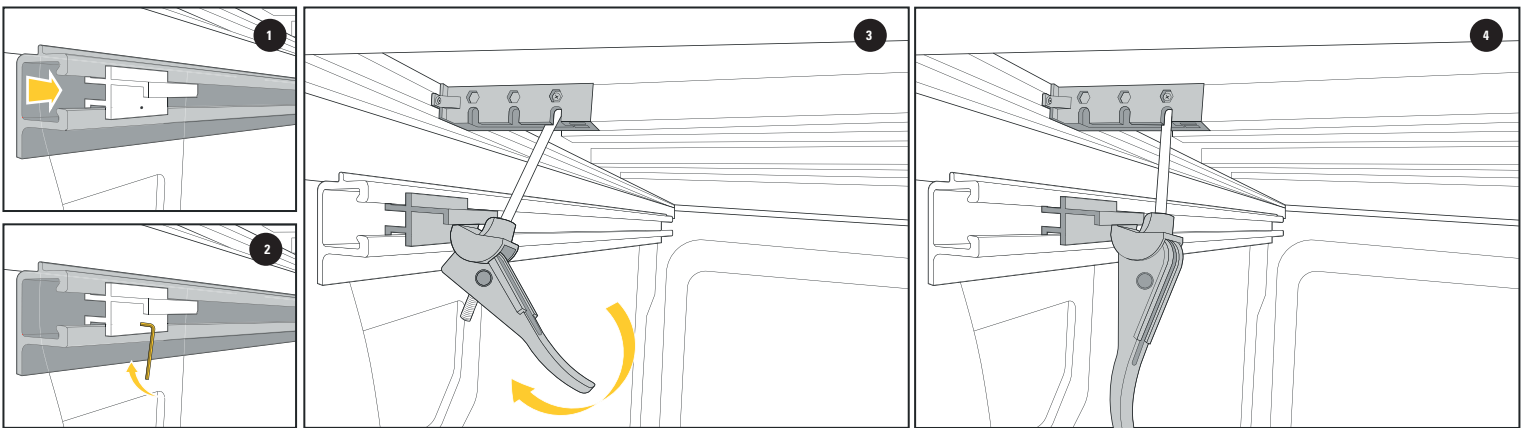
# LATCH POSITION CHANGE



1. Remove using a #2 Phillips screw driver and needle nose pliers to pull out nut.
2. Push screw out with the tip of the screw driver.
3. Move latch to new position. Place screw & nut in new positions holes. Make sure the screw is holding latch in place and tighten.
4. Before folding place latch in secured nested position. Failure to do so may result in damage to the tarp.

# RAIL MOUNT BRACKET

\*Use if your vehicle has a utility track.



1. Insert bracket into utility track
2. Tighten set screw with supplied Allen hex once the bracket is in the correct position.
3. Rotate latch handle downward to engage latch.
4. Make sure the latch is tight and secured.



Our website offers you a wide variety of tonneau covers at affordable prices.