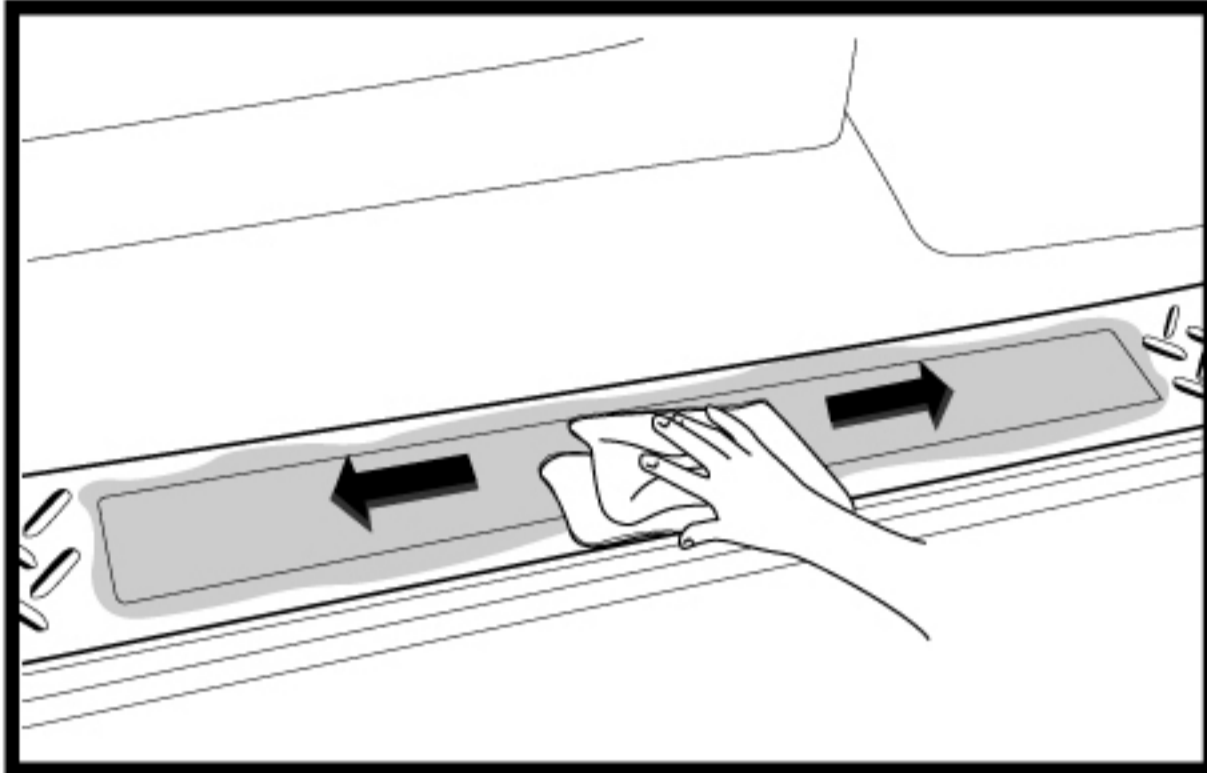
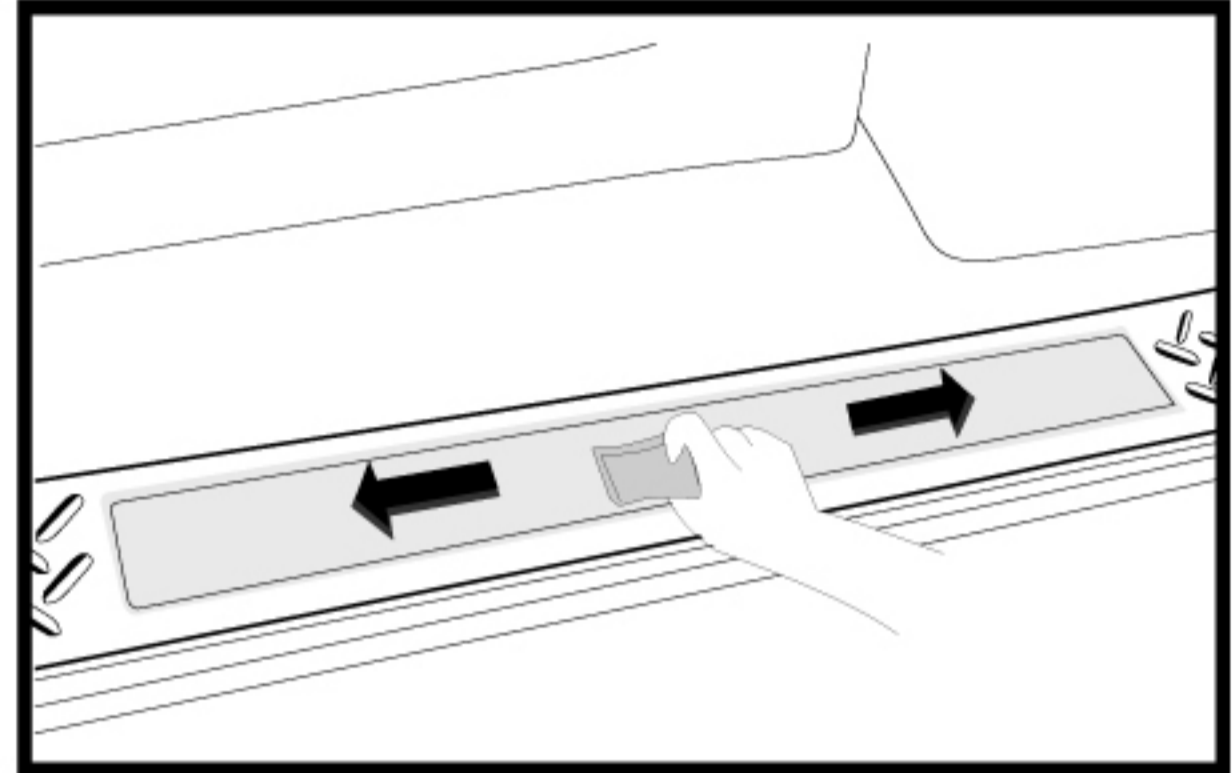


Door Sill Plate Installation Manual

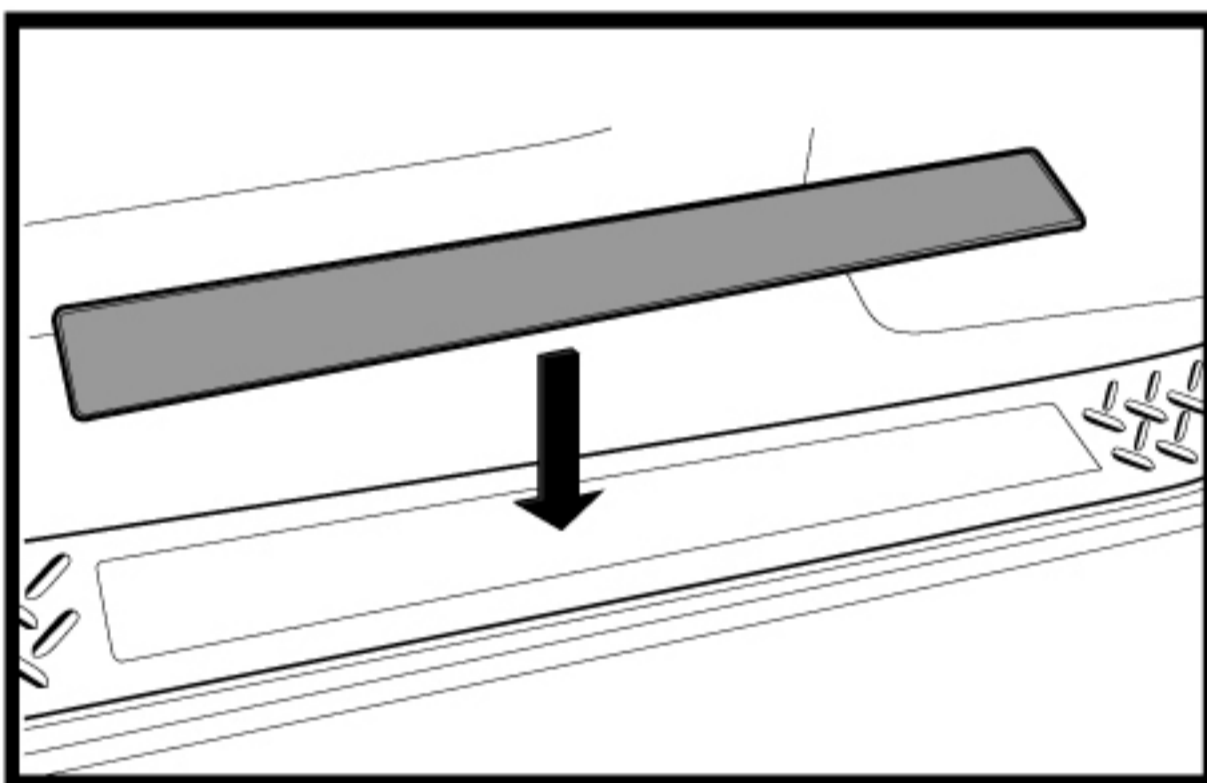
Installation of Door Sill Plate



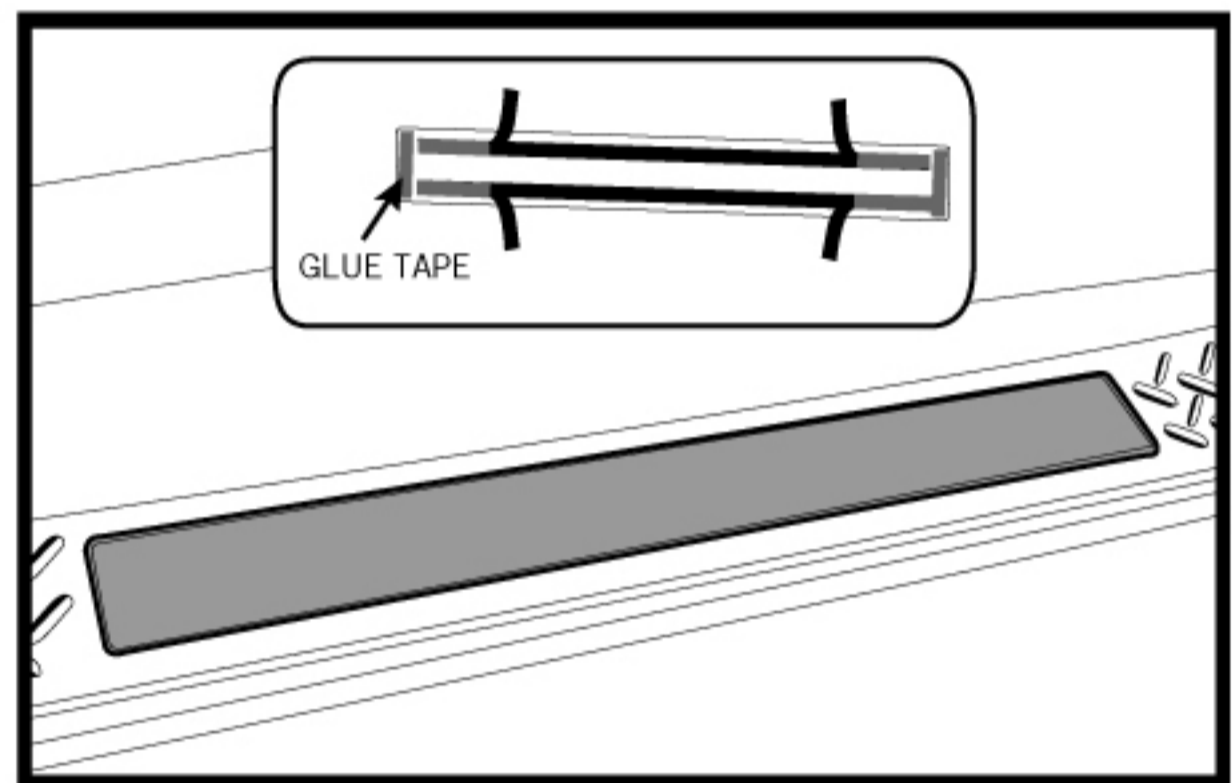
1. Clean the affixing area by using soft cleaning cloth or sponge with mild detergent and water solution.



2. Apply the primer for the last cleaning process.



3. Accurately measure the sill plate position prior application. Repositioning of the double-sided tape can deteriorate their adhesive property.



4. Remove the release paper of the double-sided tape by pulling it, and securely install the Front Plate and the Rear Plate. Press the sill plate firmly to tighten the application.

CAUTIONS UPON INSTALLATION

The cautions mentioned hereunder are very important to install this product to prevent damage

1. Do NOT install or use this product in any others ways except usage in vehicle specified.
2. Please thoroughly read installation instruction before attempting.
3. This product must be installed as specified in the manual. Failure to do so may result in improper fit which can cause damage or complete loss of the product, and will void the warranty.
4. For installation under temperature 15 degree Celsius or lower, it is strongly advised to use dryer to warm double-side tape to ensure proper adhesion.
5. After installation, make sure to allow a minimum of 24 hours before operating vehicle, or contact to water.

MAINTENANCE :

1. To clean stain on the product, use soft cloth or sponge with mild detergent and water solution.
2. Avoid using chemicals or any abrasive-type cleanser to clean as they can cause damage to the product.
3. It is advised to wash vehicle often, if vehicles are used in the area where snow melting agent is frequently used or see breeze blow,