



# 2014-15 GMC Sierra 1500

## 4pc Bolt Over

After



PART# 47241 (Brushed) 47242 - (Polished) 47243 - (Black) Upper

### Hardware

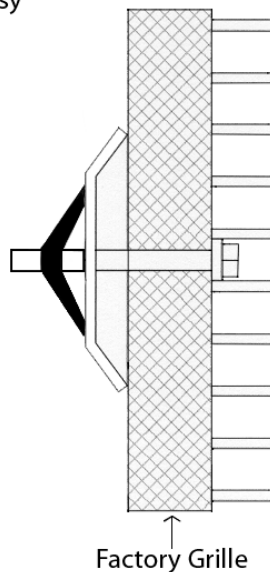
- 10 - Toggle Bolt Assemblies
- 10 - Brackets 4302-1

**1** Center [billet grille](#) in opening. Use supplied hardware and attach per illustration below. Start by placing the supplied 10-24 x 1 1/4" phillips head bolts through the mounting tabs in billet grille. Now place bracket then attach the wing portion to the bolt.

**2** Place billet grille into opening and center. Push the toggle bolt wing through the stock plastic grille. Loosely Tighten bolts, make any necessary adjustments and fully tighten without over tightening bolts. Repeat process for remaining grilles. A drop of loctite will insure the bolts wont back out due to road vibration.

Toggle Bolt Assy

Billet Grille



Completed Installation

For installation of billet grilles that require cutting of the stock shell, proper tools, knowledge and skill are needed. Carriage Works is not responsible for care & accuracy of the installation, only for Fit & Finish of its products. Use a qualified installer or contact original vendor for references to complete all instructions.

NOTE: Please adjust horizontal blades if irregular. This is the result of shipping and handling outside of Carriage Works control. Also Carriage Works Recommends applying a high quality automotive wax to maintain the original appearance.