



# 2007 Toyota Tundra [Bolt Over](#)

**PART# 43851 (Brushed) 43852 - (Polished) 43853 - (Black) Upper**

After

Shown with optional Upper Machined Grille Part#43752



Shown with optional Bumper Part#4374

Hardware

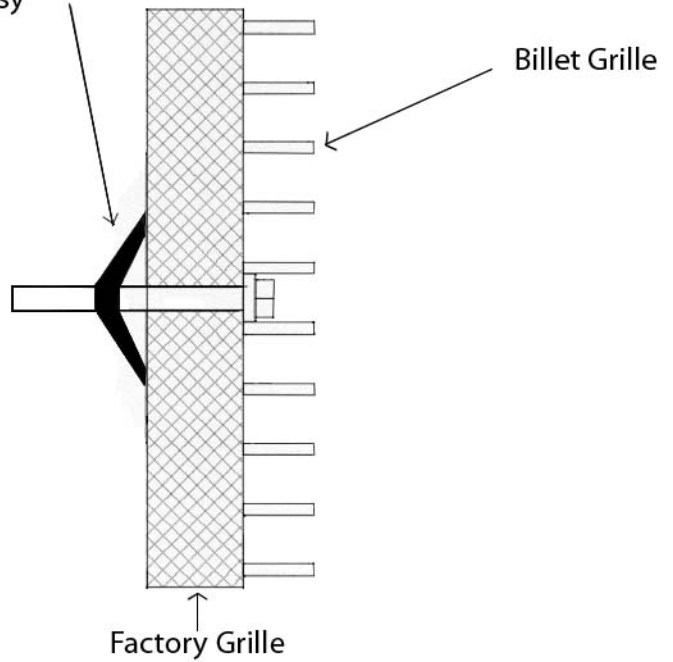
4 - Toggle Bolt Assemblies



Place billet grille into opening and center. Attach billet grille by using the supplied Toggle bolt assemblies. Place bolt thru mounting tabs in billet grille then attach wing portion of toggle on bolt and tighten, without over tightening. (See Diagram)

## Diagram

Toggle Bolt Assy



Completed Installation

For installation of billet grilles that require cutting of the stock shell, proper tools, knowledge and skill are needed. Carriage Works is not responsible for care & accuracy of the installation, only for Fit & Finish of its products. Use a qualified installer or contact original vendor for references to complete all instructions.

NOTE: Please adjust horizontal blades if irregular. This is the result of shipping and handling outside of Carriage Works control. Also Carriage Works Recommends applying a high quality automotive wax to maintain the original appearance.