

# Factory Step Installation Instructions

Part No's: 451001, 451007



## Vehicle Application:

**FORD**

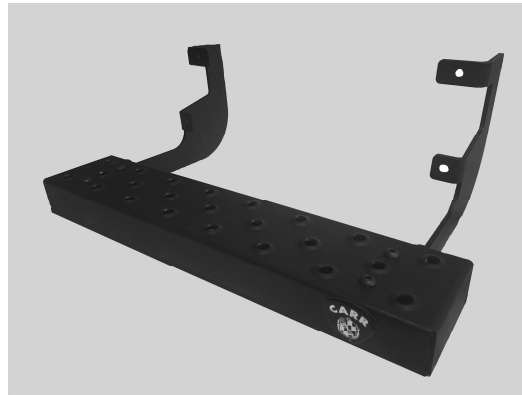
'15-'20 Transit all configurations Including AWD  
**(WILL NOT FIT TRANSIT CONNECT)**

## **MATERIAL NEEDED:**

Drill Motor, 5/16" drill bit, 1/8" drill bit, center punch, 1/2" socket, 3/8" socket, Flat head screw driver, ratchet, impact wrench (if available) 3/16" Allen wrench, marker.

## **MATERIAL FURNISHED:**

2 -Steel Factory steps, 4 – Mounting brackets (2 - right, 2 - left), 1 – Hardware pack, 1 – Instruction.

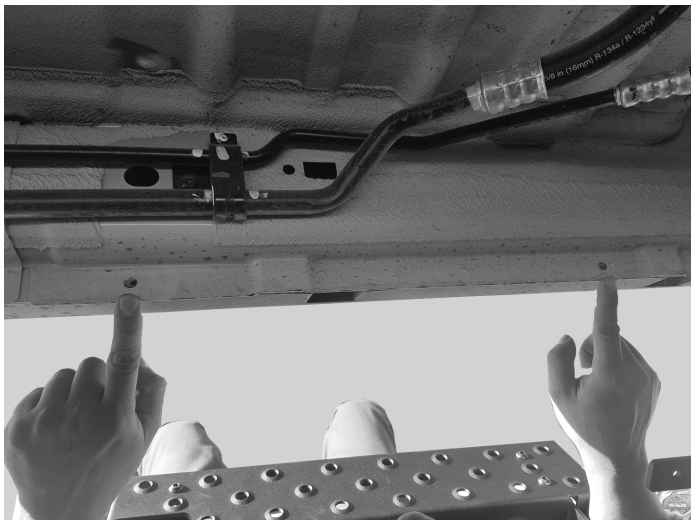


1. Assemble step as shown by using a left and a right bracket with tabs facing inwards. Use 5/16" x1" socket button head screws with washers and nylon locks nuts. Securely tighten step Do not fully tighten.



2. With step assembled, place step in the desired location avoiding any A/C lines as shown (Passenger vans only) Avoid any bumps or indents to allow both brackets to be parallel to each other. With a marker mark both holes for the 5/16" mounting hardware; top holes do not need to be marked.

**NOTE: Passenger van with A/C lines shown.**



3. With both holes marked, center punch both marks and drill out with the 1/8" drill bit followed by the 5/16" drill bit. Try to clean out burrs as best as possible. Be careful not to drill into plastic trim. The step and brackets will need to be disassembled for the next step.



4. With both holes drilled out use a flat head screwdriver to pry on plastic trim and slide in the U-nuts.



## Factory Step Installation Instructions

Part No's: 451001, 451007

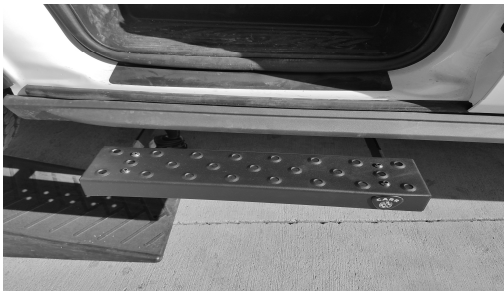


### WARNINGS!

- ✓ Do not over tighten the nuts and bolts or damage to the castings and or stripping of the threads could result.
- ✓ FOR SAFE AND PROPER USAGE OF THIS PRODUCT, THE MOUNTING INSTRUCTIONS MUST BE FOLLOWED CAREFULLY AND COMPLETELY.
- ✓ The manufacturer and distributor of this product are in no way responsible for the consumer's failure to adhere to the warnings and directions of these instructions in the event of damage to the consumer's vehicle, other properties and or personal injury.



5. With both U-nuts in place use the 5/16" bolts and washers to secure both brackets to the rocker panel. **Do not fully tighten.**



6. Re-install your step and with the 3/16" Allen wrench and 1/2" socket fully tighten all four button head screws.



7. Fully tighten both 5/16" bolts to U-nuts. Finally with a 3/8" socket install the #14 self-tapping screws to both brackets and be careful not to over tighten them. Your step is now fully installed follow the same procedure for other side.