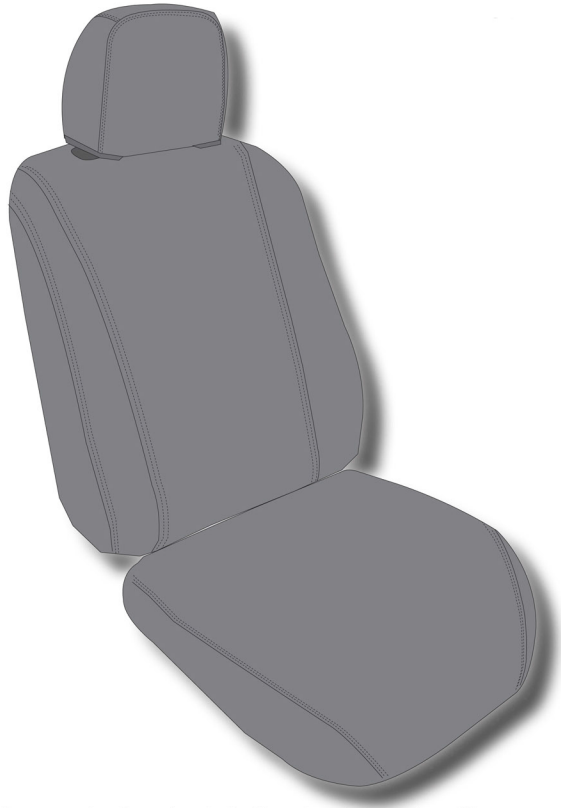




### About Your Covercraft Product

Congratulations on your purchasing decision! Covercraft Industries designed your SeatSaver® to be the very best available. With proper care, your SeatSaver® will provide years of stylish looks and maximum protection.



Thoroughly inspect each of your SeatSavers before installation to determine if any or all of the following special features apply to your specific seat style. Some of the information presented in this instruction sheet may not apply to your specific installation. Please be sure to use the applicable information for your installation.

### SPECIAL POINTS TO WATCH FOR & CONSIDER:

- 1 - Contour of seat back and cushions, including separate headrest and/or armrest covers. Some sets **may** have additional headrest covers to accommodate optional-sized headrests.
- 2 - Cutouts for seat adjustment levers and buttons, shoulder harness retaining brackets and stationary seat belt harnesses.
- 3 - Hook & loop attachments on elastic straps sewn onto the underside of the bottom cushion.
- 4 - Hook & loop attachments along the bottom outside edge near the crevice area between the seat back and the bottom cushion.
- 5 - Cloth-type belt with hook & loop attachments. Large cloth loop.
- 6 - Side release buckles with webbing straps.
- 7 - Be sure that no hook & loop attachments are connected to other pieces prior to starting the installation.

### INSTALLATION INSTRUCTIONS

If your vehicle is equipped with brackets on the outboard side of the backrest, check the covers to determine if an opening has been provided for them. If not, they must be removed before installation of the SeatSavers. If your covers have a belt loop sewn at the bottom, make sure it slips over the backrest while installing the SeatSaver.

# Installing the Headrest

\*Movement/ adjustment of the seats may assist in cover installation.



## Step 1

Remove headrests, if applicable (see Figure 1). If headrests are not removable, locate the hook and loop openings in the seatcover that will allow for the headrests to pass through (see Figure 2).

Figure 1

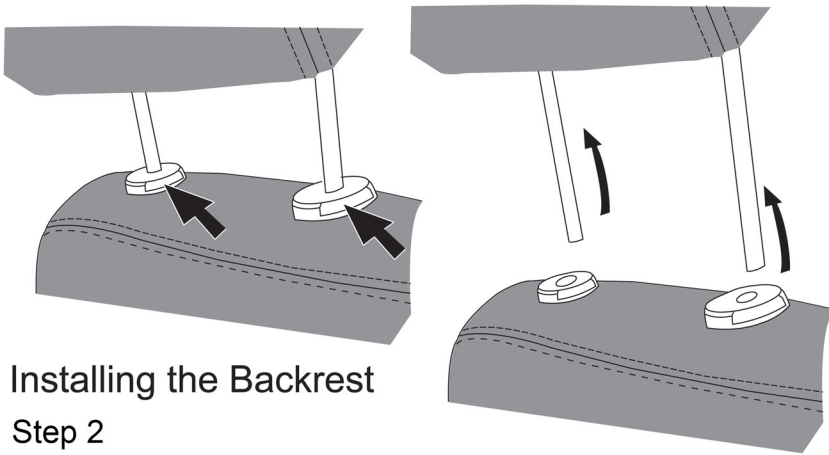
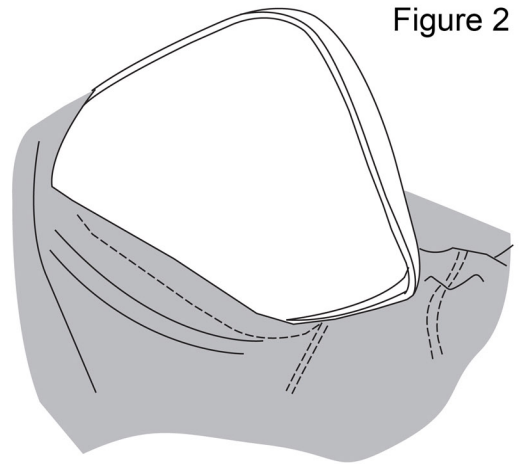


Figure 2



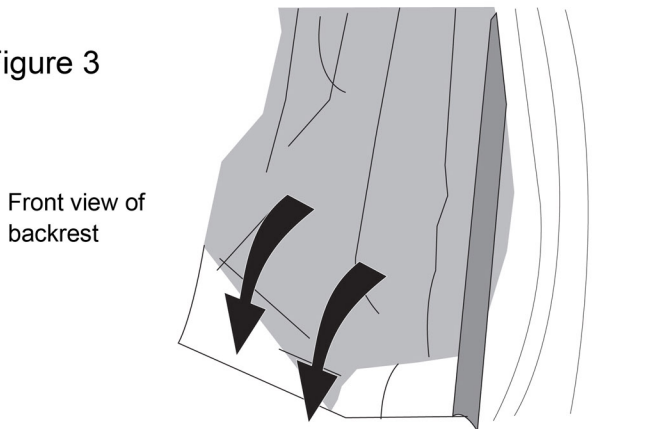
# Installing the Backrest

## Step 2

Place backrest on first (see Figure 3) noting any seat details or features that have a corresponding opening or cutout on the cover (seatbelt, armrest, removable headrests, etc.).

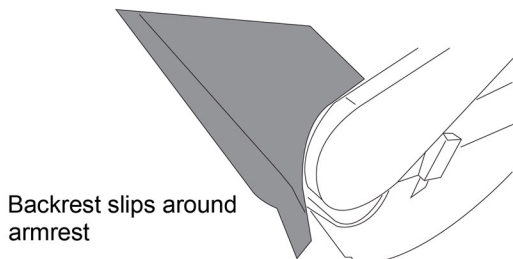
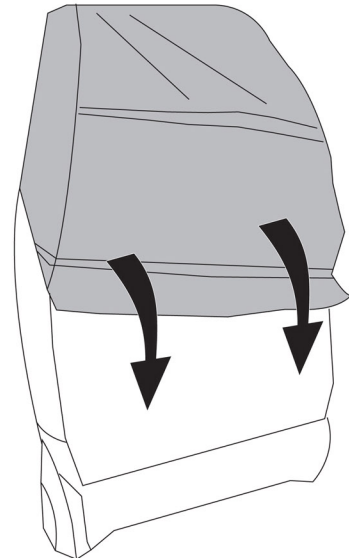
*Note: Fold flat seats commonly have a separate top and bottom piece.*

Figure 3

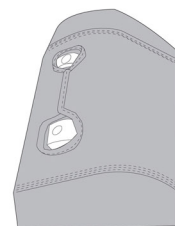


Front view of backrest

Back view of backrest

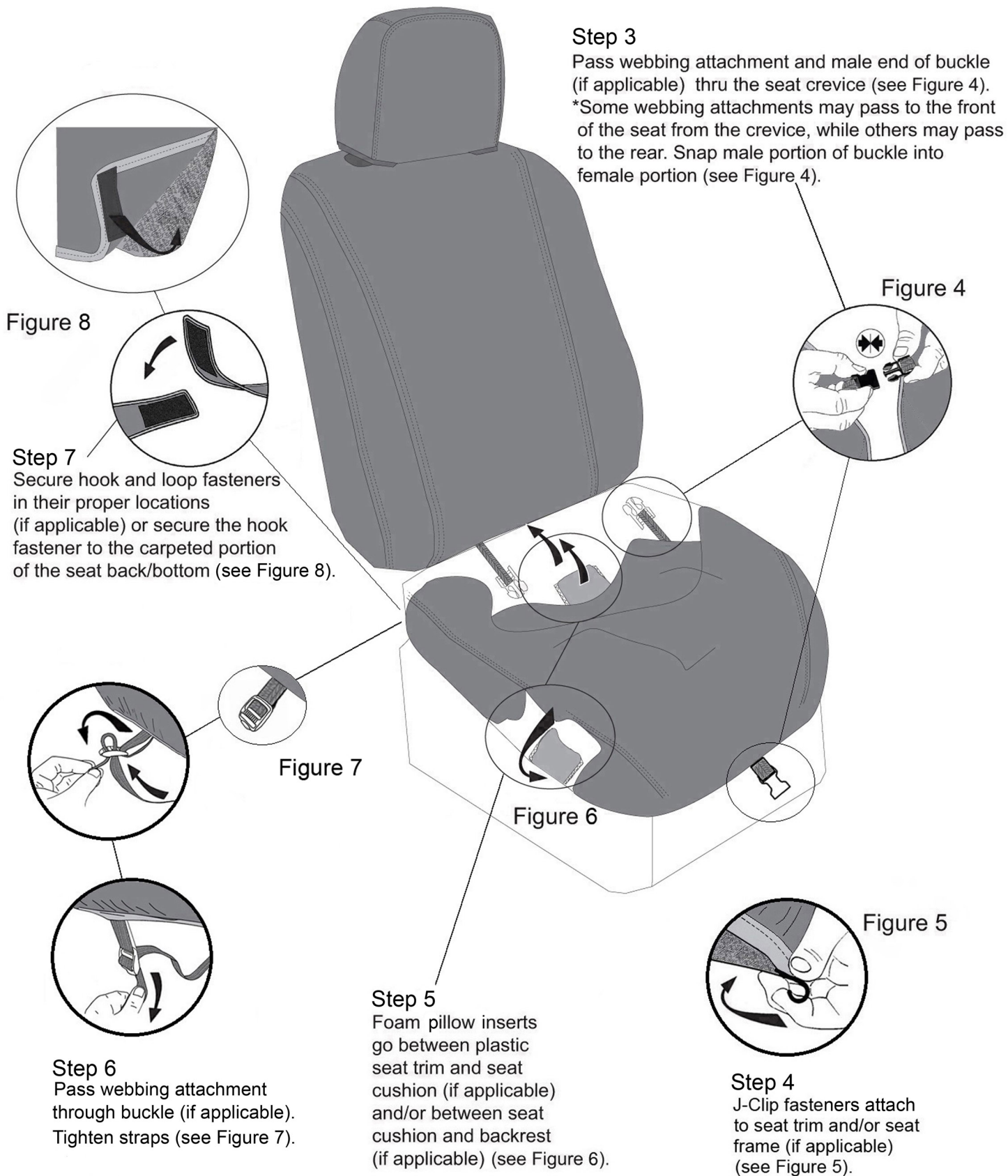


Backrest slips around armrest



Corresponding openings for removable headrests

# Installing the Seat Cushion



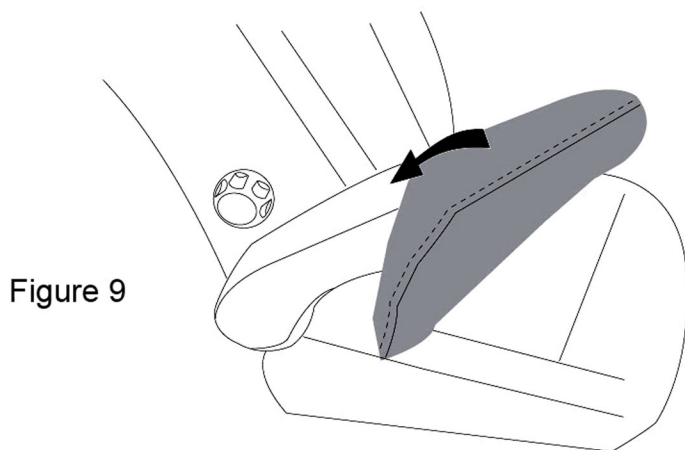
## Step 8

If your vehicle has a center seat console, with or without headrests, please refer to Steps 1 through 7 and install the corresponding center console covers on your seats.

## Installing the Armrest

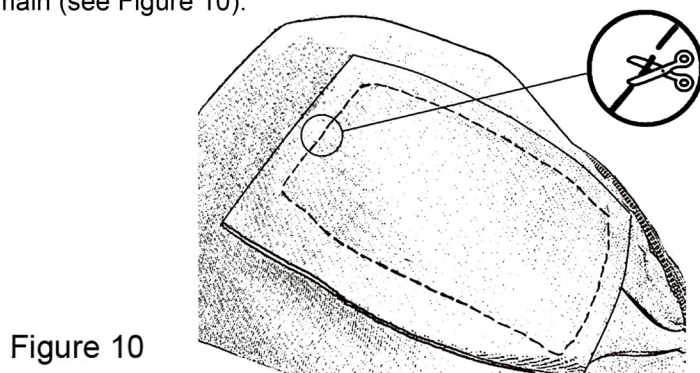
### Step 9

Determine the correct cover for each armrest by matching the contour/shape of the cover with the contour/shape of the armrest. Pull the cover completely over the armrest, securing it over the rear edge (see Figure 9). Adjust as needed.



### Step 10

If the seats are equipped with options such as additional levers or controls, an optional patch must be removed for access. From the inside of the cover only, cut the stitches holding the patch in place. Remove the patch and any loose threads that may remain (see Figure 10).





# Installing the Rear Seats

## Step 11

Remove headrests, if applicable, as shown in Figure 1 of the front seat installation. If headrests are not removable, locate the hook and loop openings in the seat cover that will allow for the headrests to pass through (see Figure 2 of the front seat installation).

Place cover(s) over their respective part(s) (60/ 40) noting any seat details or features that have a corresponding opening or cutout on the cover (seatbelt, armrest, headrest, etc.) (see Figure 11).

*\*In certain applications, the backrest cover will pass under the center seatbelt.*

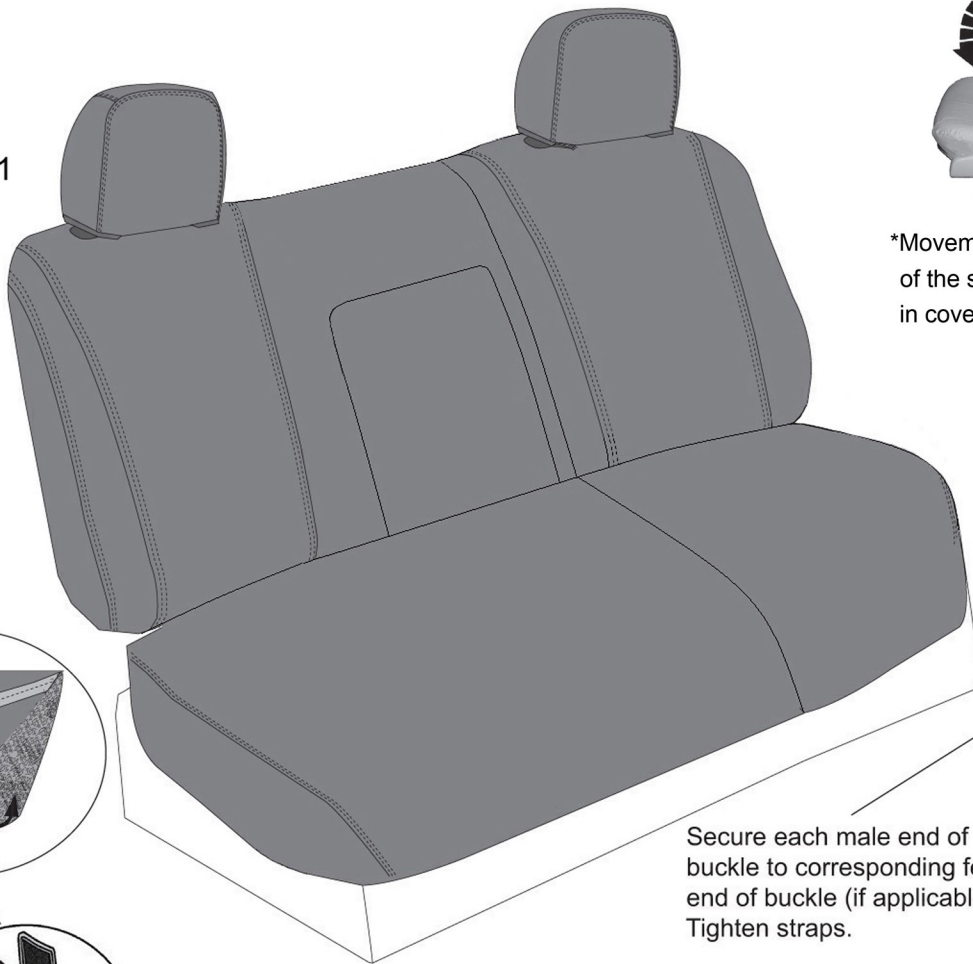
*\*In certain applications, the backrest cover will have a hook and loop closure in front or in the back to accommodate the center seatbelt.*

*\*In certain applications, the backrest cover will have a hook and loop closure in back to accommodate the center seatbelt.*



\*Movement/ adjustment of the seats may assist in cover installation.

Figure 11



Secure each male end of buckle to corresponding female end of buckle (if applicable). Tighten straps.

Figure 12

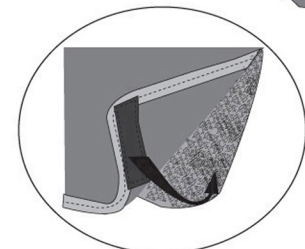


Figure 14

Secure hook and loop fasteners in their proper locations (if applicable) or secure the hook fastener to the carpeted portion of the seat back/bottom.

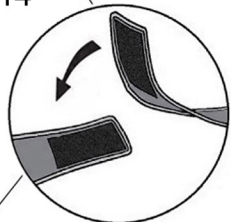
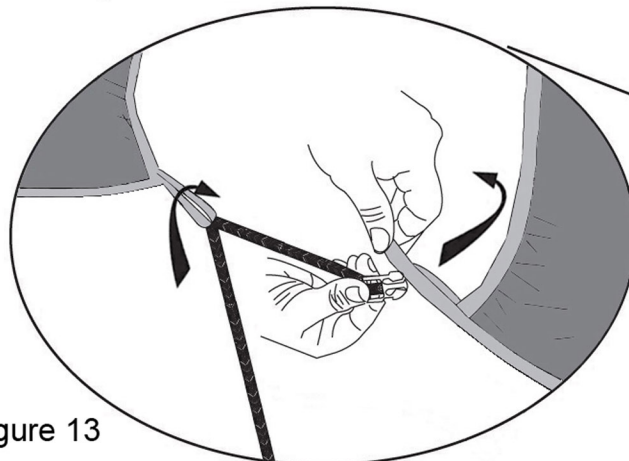


Figure 13



In certain applications, the webbing(s) on the bottom seat portion will pass through a loop on the cover, creating an additional anchor point before securing to its corresponding buckle.

# Installing the Rearseat Armrest/Console

Determine the correct orientation for the cover by matching the contour/shape of the cover with the contour/shape of the armrest/console.

## Step 12

Pull the cover over the armrest/console, making sure to pull the release strap through the cutout (if applicable).

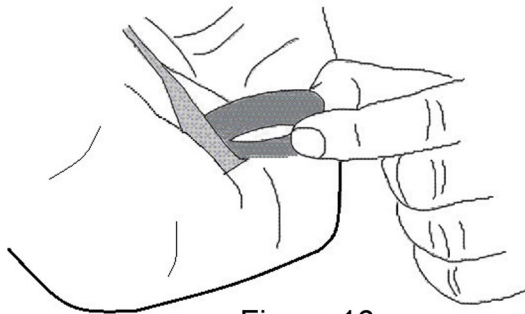


Figure 16

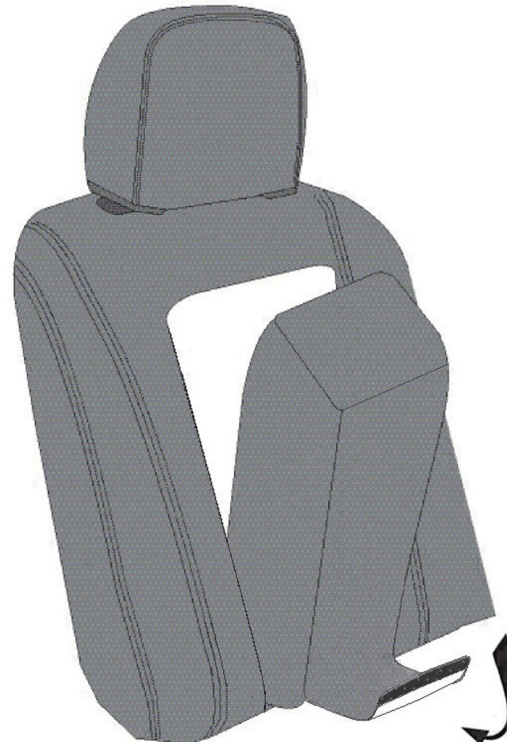


Figure 15

## Step 13

With the armrest/console tilted, insert the rear attachment through the space between the seat back and rear edge of the armrest/console.

## Step 14

With the armrest/console folded down, secure the hook and loop fastener at the rear edge. Adjust as needed.

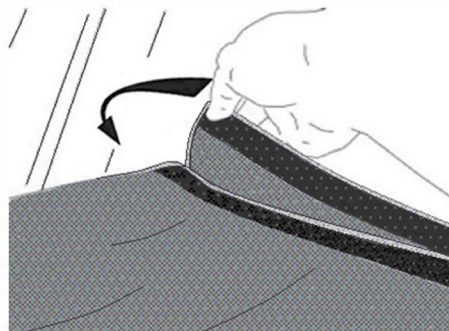


Figure 17

## CARE AND CLEANING INSTRUCTIONS

Wash your SeatSavers in a conventional washing machine, using cold water, a low-sudsing detergent and a gentle cycle setting. DO NOT use bleach or fabric softener.

Dry covers using the "air" or "low heat" setting on a standard tumble dryer. They may also be line dried, weather conditions and temperature permitting. DO NOT IRON.