

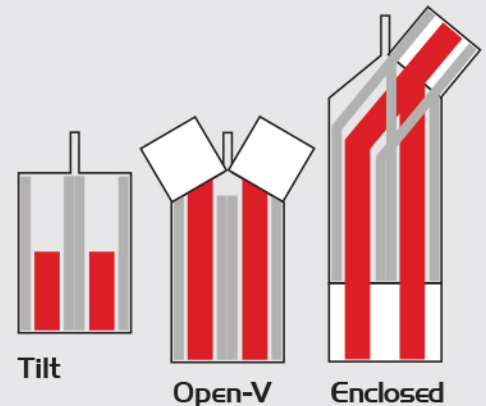
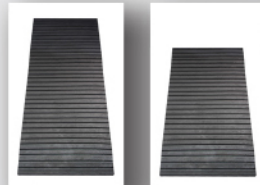
- Unique bottom groove design allows moisture to dissipate



Superior Airflow Prevents against deck rot

- Provides traction and braking control when loading
- GREAT FOR STUDS

AVAILABLE IN 72"
& 54" LENGTHS



SPECS:

16" wide x 54" or 72" long x 3/8" thick
 Can be purchased in 54" or 72" lengths
 Stainless steel mounting hardware included