



# Caliber™

POWERSPORTS ACCESSORIES

 **SNOW**    **MARINE**    **OFF-ROAD**



# LOADING RAMPS



## 1,500 lbs. LOAD RATING

The Industry's most innovative ramp designed for ATVs, UTVs, Snowmobiles & Golf Carts!

13527 |

### ULTIMATE TRACTION AND GLIDE



### INTEGRATED FINGERS



### INTEGRATED FEET



RAMP BRIDGE (SOLD SEPARATELY)  
13574 (90°) |



DIRT BIKE



GOLF CART



ATV

ULTIMATE LUG TRACTION FOR ATVS AND SAFE WALKING EVEN WHEN WET!



SNOWMOBILE

11.5" LOWPRO GRIPGLIDE ACCOMMODATES SNOWMOBILE SKI STANCES DOWN TO 30"



SELF-RETRACTING RATCHET STRAP INCLUDED!

RAMP GRIPS (SOLD SEPARATELY)  
13204 |



TRACTION LADDER (SOLD SEPARATELY)  
13550 |





## 3,000 lbs. LOAD RATING

VERSATILITY: REDEFINED ramp designed for UTVs, ATVs, Snowmobiles, Snowbikes, Dirt bikes, Motorcycles & Golf Carts!

13528 |

### ULTIMATE TRACTION AND GLIDE



### INTEGRATED FINGERS



### INTEGRATED FEET



REMOVABLE CENTER SECTION FOR USE WITH SNOW BIKES AND DIRT BIKES

### DIRT BIKE



### GOLF CART



ULTIMATE LUG TRACTION FOR ATVS AND SAFE WALKING EVEN WHEN WET!

### ATV



### SNOW BIKE



RAMP GRIPS (SOLD SEPARATELY) 13204

### SNOWMOBILE



### UTV



SELF-RETRACTING RATCHET STRAP INCLUDED!

ADDITIONAL STRAP REQUIRED FOR SPLIT USE (SOLD SEPARATELY) 13548 |

# Moto Ramp Pro™

Patent Pending

## THE MOST VERSATILE RAMP ON THE MARKET FOR ALL OF YOUR TOYS!

*A safe and effective universal loading solution!*

13561 |

ULTIMATE TRACTION AND GLIDE



INTEGRATED FINGERS



INTEGRATED FEET



ATV



DIRT BIKE



SNOW BIKE

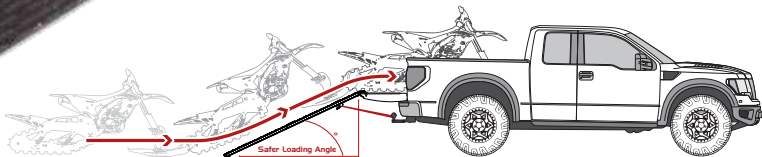


SELF-RETRACTING STRAP INCLUDED



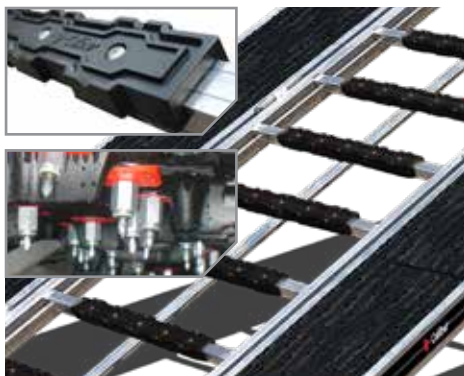
RETRAX ACC. STRAP | 13548 |

TRACTION BAR | 13562 |



**7.5' = SAFER LOADING ANGLE**

# RAMP ACCESSORIES

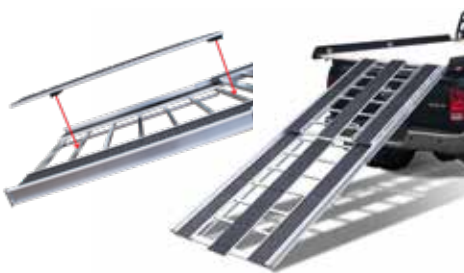


## ◆ Ramp Grips *Patent Pending*

- The perfect accessory for your Ramp Pro
- Excellent traction and braking control while loading/unloading
- Gives superior protection from stud penetration
- Wraps around 1" bars on any ramp
- 15" length protects ramp from most track widths
- Flexible, strong and guaranteed to last

**13204 |**

Hardware included.



## ◆ Ramp Bridge *Patent Pending*

- Quickly add Ramp Bridge for instant ease of loading/unloading of your snow bike
- Comes with 2 ramp grips per kit that can be located on the ends of the ramp bridge
- Ramp Grips can be cut to fit cross bars over 1"
- Easily cut Ramp Bridge length according to the length of your ramp

**13574 |**

Hardware included.



## ◆ Retrax

- Self retracting power spring strap
- Installs in 15 seconds!
- Large 2" hook with integrated spring clip
- High strength 1500 lb strength with 500 lb working load rating

No hardware or assembly necessary.



## ◆ Traction Ladder *Patent Pending*

- Innovative roll out design provides superior ground traction for icy/packed surfaces
- Compact design is easy to store when product is not in use
- Two large 1" hooks makes attachment a snap

**13550 |**

Includes Five - 15" Traction Grips with Two - 1" hooks.  
No hardware or assembly necessary.



# TRAILER *ACCESSORIES*



# GLIDE ACCESSORIES

## **LowPro Glides™**

Patent # 5.609.110

★ BEST SELLER

### EFFORTLESS LOADING OF YOUR SNOWMOBILES

- Reduced friction and wear from carbides to make loading and unloading easier, and more efficient
- Low-profile design allows trailers to be used for multiple purposes
- The best glide option for single, double, and triple-carbide runners
- Our updated design provides an increased working surface
- Additional mounting locations provide increased versatility
- LowPro Glides offer a wide variety of ski stance variances
- Caliber's Lifetime warranty guarantees product to never chip, crack, break or wear out

#### **NARROW (6")**

- 13370 Extension Set - 4pc.
- 13371 Single Set - 8pc.
- 13372 Double Set - 16pc.

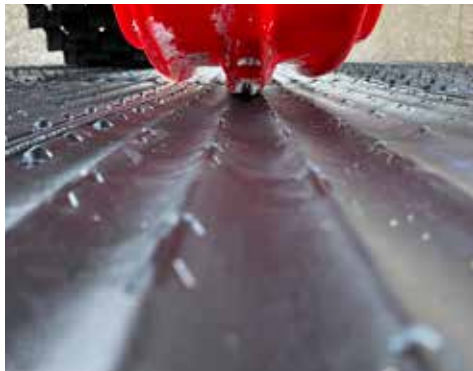
#### **STANDARD (9")**

- 13373 Extension Set - 4pc.
- 13374 Single Set - 8pc.
- 13375 Double Set - 16pc.

#### **WIDE (11.5")**

- 13376 Extension Set - 4pc.
- 13377 Single Set - 8pc.
- 13378 Double Set - 16pc.

Hardware included.





# GLIDE ACCESSORIES

## LowPro Grip Glides™ ★ BEST SELLER

Patent # 5.609.110

### GLIDE WITH EASE & LOW PROFILE DESIGN OFFER FLEXIBILITY

- Reduced friction and wear from carbides to make loading and unloading easier, and more efficient
- Adds elements of safety and ease of use while loading and unloading your powersports vehicles
- The best glide option for multi-purpose use – Snowmobile, ATV, UTV, Snowbike, Dirtbike, Motorcycles, Golf Carts – great for any enclosed trailer door, or open/exposed trailer and deck surfaces
- Lower channel depth provides a higher profile for engagement points – increased traction
- Additional mounting locations provide increased versatility

#### NARROW (6")

- 13379 Extension Set - 4pc.
- 13380 Single Set - 8pc.
- 13381 Double Set - 16pc.

#### WIDE (11.5")

- 13385 Extension Set - 4pc.
- 13386 Single Set - 8pc.
- 13387 Double Set - 16pc.

Hardware included.

#### STANDARD (9")

- 13382 Extension Set - 4pc.
- 13383 Single Set - 8pc.
- 13384 Double Set - 16pc.



NARROW



WIDE



### Multi Glides™ Patent # 5.609.110

- Deep channel suspends all types of carbide runners
- Wide design accommodates all dual runner skis
- Eliminates damage to trailer decking caused by carbide ski wear rods
- Guaranteed not to crack, chip, break or fade

- 13305 Single Set - 8pc.
- 13306 Wide Single Set - 8pc.
- 13310 Double Set - 16pc.
- 13311 Wide Double Set - 16pc.

Double Sets, Extension kits and Single 5' sections available. Additional sets Available. See website for more details. Hardware included.



TRAILER DECKING



TRAILER RAMPS



### Grip Glides™

- Grips for ATV tires
- Glides for snowmobile carbide or wear bars

- 13350 (Trailer Deck Set of 22)
- 13351 (Trailer Door Set of 32)
- 13352 (Ramp Set OF 16)

Hardware included.

# TRACTION ACCESSORIES



## Trax Grabber ★ BEST SELLER

Patent # 9.809.932

- Effortless loading of your snowmobile
- Innovative lug pattern provides interlocking grip
- Strategic lug placement engages 2.5", 2.86" and 3.0" pitch tracks
- Great for all track types
- 16" width accommodates most tracks
- Guaranteed not to crack, chip or break

**23060 (2pc. kit)**

Hardware included.



## Trax Saver

- Helps prevent paddle damage during transport, by raising them off deck surface
- Easily tucks underneath skid, once loaded
- Designed to work with Trax Grabber
- Made from highly durable, proprietary rubber blend

**23062 |**

No hardware included or assembly required.



## Trax Mat

- Excellent traction when loading & unloading
- Protect trailer decking from studded tracks
- Unique bottom groove design allows moisture to dissipate
- Made from highly durable, proprietary rubber blend

**13210 (54")**

**13211 (72") |**

18" width. Hardware included.



## Grips

- Excellent traction and braking control while loading or unloading
- Prevent the track from freezing to your trailer
- Provides superior performance compared to bare trailer decks
- Provided stainless flathead screws mount straight through grip flange

**13200 |**

Includes 6 - 15" pieces. Hardware included.

# ADDITIONAL ACCESSORIES



## ◆ EdgeGlides 2.0®

Patent # 9.988.177

- Easily transition onto trailer door and across door gaps
- Saves door edges damage from ski carbides
- Modified high density polymer is guaranteed not to crack

13390 (48" - 2pc.) | 13391 (72" - 3pc.) | 13392 (96" - 4pc.)

**NIFTY**  
**50**  
POWERSPORTS



## ◆ EdgeGuards®

- Innovative containment system providing additional safety for loading & unloading
- New design combines our Flex Glide High & LowPro Grip Glide into one great product
- Protects trailer door cables from being caught by snowmobile skis
- Interlocking design makes installation a breeze

**13388 |**

Includes 12 Edge Guard pieces. Hardware included.

## ◆ EdgeGlide TiltSet®

13362 (4pc. w/o Hinges) Hardware included.



## ◆ V-Front Ramp Shield®

- Universal design fits most open trailers
- Aerodynamic design to help with gas mileage
- Our LowPro Grip Glides are installed on the ramp to make unloading simple
- Molded Grips down the center to give your snowmobile track traction

**13404 |**

Hardware included. Assembly required.



## ◆ Poly Shield III®

- 25.5" high and fits trailers from 95" to 102" without modification
- Removes in seconds with included Quick-Detach kit
- Will not shatter, crack, split or dent
- Shield is not affected by extreme cold

**13401 |**

Hardware included. Assembly required.



# ADDITIONAL **ACCESSORIES**



## ◆ **Trailer Lift**

- High-strength steel ends
- New rust-proof shock shaft
- Easy loading & unloading operation
- Operates smoothly in extreme temperature
- Works with enclosed tilt trailers

**13511 |**

Hardware included.



## ◆ **D-Ring Anchor**

- Each pack includes 2 D-Rings
- Rated to 5,000 lbs.
- Flush mount so it doesn't interfere with cargo
- Galvanized backer plates included

**ZINC | 13520 |**

**STAINLESS | 13521 |**

Easy-to-follow installation template and instructions.  
Hardware included.



## ◆ **Universal Trailer Handle**

- Easily lift your trailer onto the hitch
- Keeps hands free of pinch points
- Avoid touching the freezing cold raw metal

**13522 |**

Hardware included.

## ◆ **BarrLock**

- Precision formed from high-strength steel
- Tough black powder coating protects against rust and corrosion
- Fits virtually all popular style draw bars, including vinyl coated bars



**13501 |**



**LOW**



**HIGH**



## ◆ **Flex Glide**

- Flex-Glides Low and High can be combined to complete enclosed V-Front trailers
- Designed to adjust to fit any V-Front trailer
- Protect your trailer and skis from damage
- Made of high quality HDPE plastic for durability

**13342 (Low Profile) |**

**13343 (High Profile) |**

Includes 8 pieces - 44" in length when connected.  
Hardware included.

# ALUMINUM ACCESSORIES



ONLY THE BEST  
ALUMINUM CLEANER!

## ◆ Alumi-Etch

- Removes years of streaks, stains and oxidation from all types of aluminum
- No scrubbing, just spray and rinse off
- Will not harm carpet, bunks, wiring, rubber, paint or vinyl decals
- Apply at full strength or dilute up to 10:1 to achieve desired results
- Removes years of build-up in just minutes
- Uniform off white finish

13572 (32 oz) |

Read all instructions before using Alumi-Etch. Made in the USA.

BEFORE AFTER



**WARNING  
HIGHLY  
CORROSIVE**



ONLY THE BEST  
METAL PROTECTION!

## ◆ Alumi-Skin

- Clear protective coating for all types of metals including Aluminum, Cast Iron, Copper, Brass, Bronze, Steel and Stainless
- Preserves and protects against stains, oxidation, rust, streaks, weathering and salt spray
- Alumi-Skin™ will never peel, chip, crack, flake or yellow. A single application can last several years • High corrosion resistance / restores appearance

13570 (32 oz) |

13573 (8 oz) |

CAUTION – FLAMMABLE LIQUID. Read all instructions before using Alumi-Skin. Made in the USA.



32 oz



8 oz

UNTREATED TREATED



**WARNING**

Reproductive Harm

**Sled Wheels**™ Patent # 10.486.729

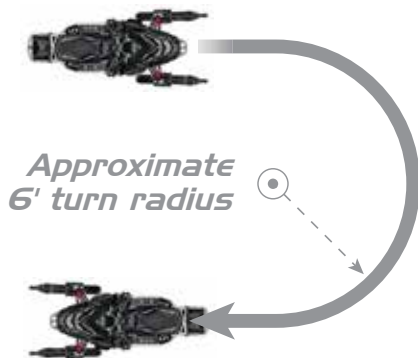
## SNOWMOBILE TRANSPORT KIT

*Feel the freedom!*

13585 (Snowmobile Transport Kit - Pair) |

13578 (Replacement Wheels - 4) |

13577 (Replacement Finger Bushings - 6pc.) |



1.



2.



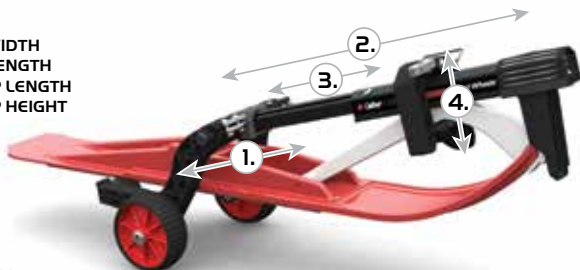
3.

### A SAFE AND EFFECTIVE MOBILE SOLUTION!

- Updated material provides 2x increase in strength, durability, and responsiveness
- Provides unmatched mobility for snowmobiles on hard surfaces – speeds up to 12mph
- Multi-point adjust-ability provides a secure fit and accommodates most makes and models
- Lifts skis to reduce or minimize excessive carbide wear
- Innovative design provides fast engagement and disengagement
- Helps protect floors and surfaces by eliminating contact
- Easy to place and remove

### ADJUSTABILITY AND COMPONENTS

1. SKI WIDTH
2. SKI LENGTH
3. LOOP LENGTH
4. LOOP HEIGHT



1 Pair Wheel Kit with Hardware.  
Assembly required.

Made in the USA. Lifetime warranty.



## FEATURES AND BENEFITS

**ANODIZED ALUMINUM FRAME**

**MOLDED BUMPERS PROTECT SPINDLES**

**ADJUSTABLE FOR MOST SKI WIDTHS**

**OVER MOLDED WHEELS FOR GRIP AND EASY STEERING**

**ADJUSTABLE HOOK WITH RUBBER SEAT**

**SPRING LOADED FOR QUICK ATTACHMENT**

**SAFETY PIN INCLUDED FOR EXTRA SECURITY**

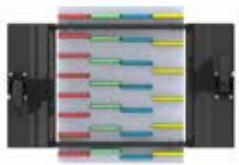
**MOLDED FINGER COVERS ADD PROTECTION FROM CARBIDES**



### Trax Wheels 2.0<sup>®</sup> NEW

- Tapered sides allow track to easily drop in place
- Specifically designed to accommodate all track pitches - 2.52", 2.86", 3.00" and 3.50"
- Powder-coated aluminum for long-lasting durability
- Over-sized 5" casters make moving a breeze
- Works with snowmobiles and snowbikes - up to 3.25" lug depth
- 500 LB. Load Rating

**13395 |**  
Assembly required.



### OVER-SIZED 5" CASTERS TO CONQUER DIFFICULT TERRAIN



# MARINE ACCESSORIES



## SAY GOODBYE TO CARPET!

Replace your old ripped carpeted bunks with a smooth permanent solution!



MIDNIGHT BLACK



COOL GREY



**2"x6"**  
Black-or-Grey  
16' or 24' roll

**2"x4"**  
Black-or-Grey  
16' or 24' roll



### 2"x4"

- 23050 | 2x4 Gray 16' Roll w/4 Endcaps & Stainless Hardware
- BK | 2x4 Black 16' Roll w/4 Endcaps & Stainless Hardware
- 23054 | 2x4 Gray 24' Roll w/4 Endcaps & Stainless Hardware
- 23054-BK | 2x4 Black 24' Roll w/4 Endcaps & Stainless Hardware

### 2"x6"

- 23052 | 2x6 Gray 16' Roll w/4 Endcaps & Stainless Hardware
- 23052-BK | 2x6 Black 16' Roll w/4 Endcaps & Stainless Hardware |
- 23056 | 2x6 Gray 24' Roll w/4 Endcaps & Stainless Hardware |
- 23056-BK | 2x6 Black 24' Roll w/4 Endcaps & Stainless Hardware |





### ◆ Marine Slides

- The new unique profile provides extra cushioning between the boat and trailer bunks
- Safer unloading and loading because of reduced friction and stress by 400% on the trailer cranking mechanisms, ropes and hull bow hooks
- Excellent for use on work stations, lifts, boat and watercraft dollies.

**BLACK | 23010 (3" 10pk.)**

**WHITE | 23011 (3" 10pk.)**

**YELLOW | 23013 (3" 10pk.) |**

1.5" ALSO AVAILABLE. Made in the USA. Lifetime warranty. Additional info available on-line.



### ◆ Rubber Boat Rollers

- Tough UV-resistant black rubber
- Cut resistant and shock absorbent
- No marring or scratching to your watercraft
- Aluminum shaft that won't rust or corrode

**23141 | 4" Bow (1/2") Roller**

**23143 | 4" Bow (5/8") Roller**

Other sizes & Components available. Made in the USA. Lifetime warranty. Additional info available on-line.



### ◆ PVC Boat Rollers

- Tough UV-resistant poly vinyl
- Cut resistant and shock absorbent
- No marring or scratching to your watercraft
- Aluminum shaft that won't rust or corrode

**25208 (8" Yellow) |**

**25208- Blue (8" Blue)**

Other sizes & Components available. Made in the USA. Lifetime warranty. Additional info available on-line.



### ◆ Slydz-On

- Spray-on lubricant for carpeted bunk trailers
- Easy loading of your boat or watercraft. Reduces cranking torque required by as much as 275%
- Safer unloading and loading by dramatically reducing stress on the trailer crank mechanisms, ropes and hull bow hooks
- Excellent for use on work stations, lifts, boat and watercraft dollies.

**23200 | 16 Fl. Oz. Bottle**

Made in the USA. Lifetime warranty.

# IN-HOUSE **MANUFACTURING**

18

*Caliber takes pride and ownership by manufacturing in-house to control quality and offer you the best value possible.*



# CUSTOMIZE **YOUR TRAILER** WITH CALIBER'S CONFIGURATOR

Fully customize your trailer using Caliber's on-line configurator. Select from the full range of Caliber products and when finished, print a detailed parts list based on your selections.



"Caliber's Online Trailer configurator makes customizing your trailer a snap! Instant options appear based on your needs. Print your parts list and bring it directly to your local dealership."

Learn more about trailer hitches and towing we have.