

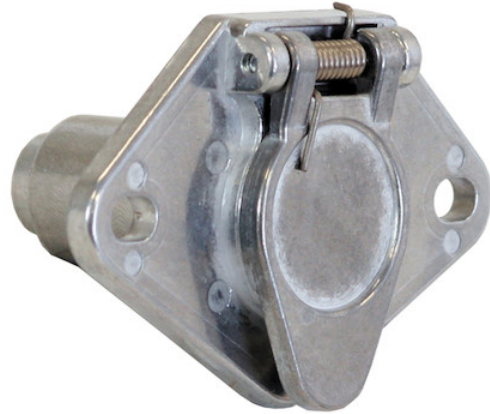


## 4-Way Die-Cast Metal Trailer Connector -Truck Side

Buyers Part Number: TC1004

Buyers Products 4-Way Die-Cast Zinc Trailer Connector is a round terminal pin, truck-side connector.

- Provides a secure electrical connection between your vehicle and trailer.
- Durable die-cast zinc construction.
- Built-in safety latch assures a secure connection.
- Spring-loaded door protects terminals when not in use.
- Available in either horizontal or vertical terminal pin configurations.



## Specifications

End Way (Number of Pins)	4	Mount (Horizontal/Vertical/Round/Flat)	Round
Start Way (Number of Pins)	4	Truck Side/Trailer Side	Truck Side
Shipping Weight	0.33 lb		