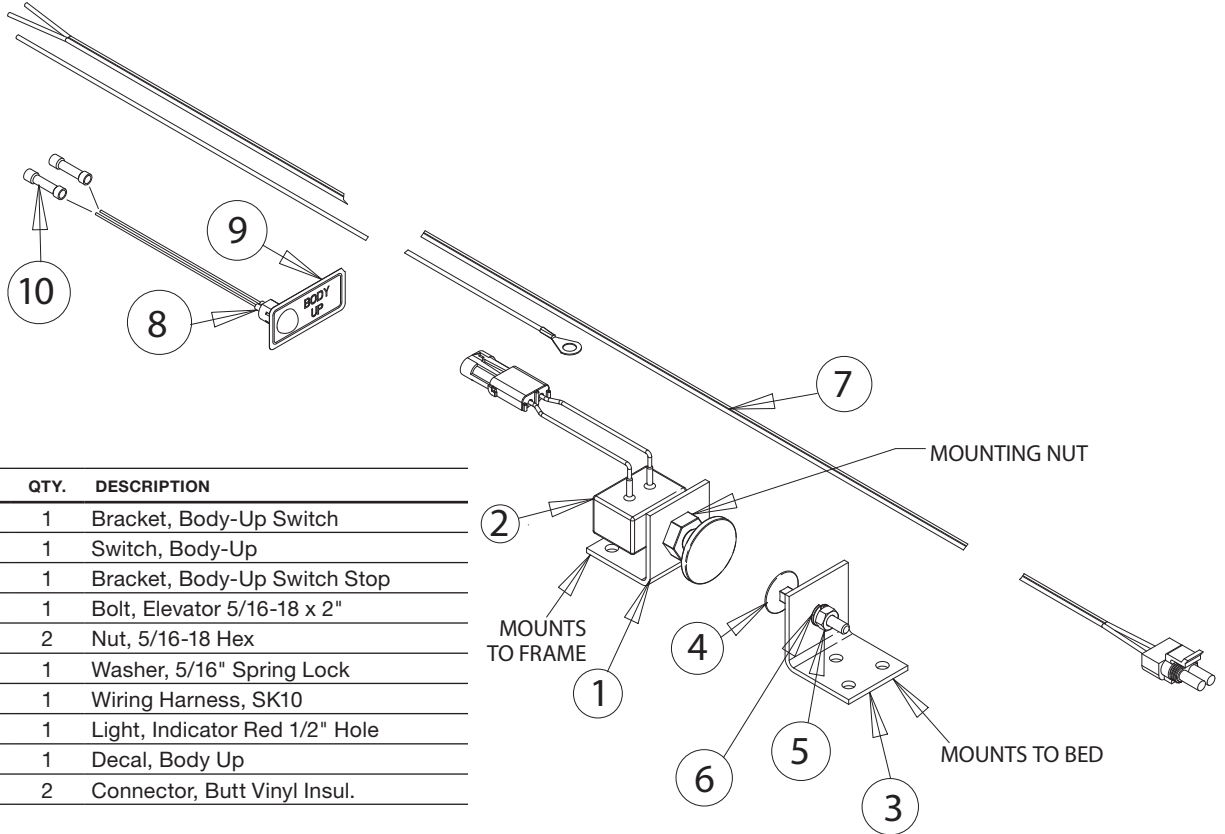


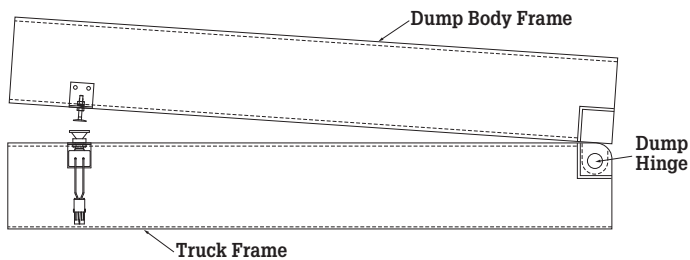
Installation Instructions

SK10

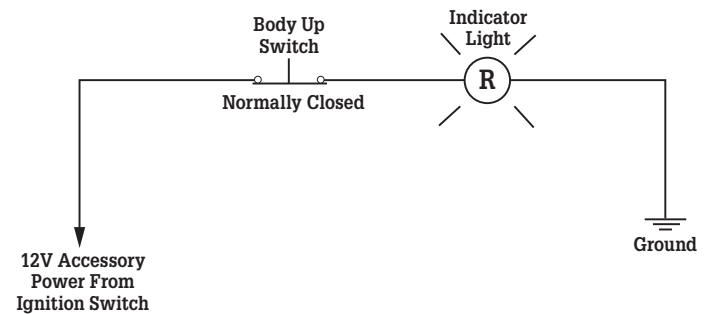


Bill of Materials

ITEM	PART NO.	QTY.	DESCRIPTION
1	3000089	1	Bracket, Body-Up Switch
2	B90	1	Switch, Body-Up
3	3000088	1	Bracket, Body-Up Switch Stop
4	B22806	1	Bolt, Elevator 5/16-18 x 2"
5	FNH031018025	2	Nut, 5/16-18 Hex
6	FWL031058008	1	Washer, 5/16" Spring Lock
7	SK101	1	Wiring Harness, SK10
8	B272332	1	Light, Indicator Red 1/2" Hole
9	SK102	1	Decal, Body Up
10	E421005	2	Connector, Butt Vinyl Insul.



1. Select an area along truck frame no more than one foot from front where both the truck frame and the bump body frame are free of obstructions.
2. Clean both surfaces.
3. Mount the bracket (3000089) to the truck frame. The top of the bracket should be 1" below the top of the frame.
4. Mount bracket (3000088) to dump body frame approximately 1" from bottom of frame.
5. Install the switch (B90) into the mounting bracket (3000089).
Caution: When assembling the plunger portion of the switch do not over tighten the mounting nut (see illustration). Fasten the nut securely to seal the switch, and use the lock-nut on the switch side of the mounting bracket to tighten assembly firmly in place.
6. Install the elevator bolt using a nut on each side of bracket.



- Adjust so that when body is down, the elevator bolt depresses the switch plunger about 3/16".
7. Select an area on dash to mount warning light and decal. The location must be visible to driver while seated in the driver's seat. The light requires a 1/2" dia. Hole. Before drilling, make sure there is nothing behind the area where the hole will be drilled.
 8. Inspect the cab to see if an existing grommeted hole can be used to run wires into cab. If none is available, drill hole to run wires into cab.
 9. Install rubber grommet to prevent wire damage.
 10. Install wire from switch plug to inside of cab. Connect brown & black wire to light. Connect red wire to hot side of ignition.

Installer please forward this instruction sheet to vehicle owner/operator.

General Information:

These instructions are for your safety and the safety of the end user. Read them carefully until you understand them.

General Safety Information:

To prevent injury to yourself and/or damage to the equipment:

1. Read carefully all owners' manuals, service manuals, and/or other instructions.
2. Always follow proper procedures, and use proper tools and safety equipment.
3. Be sure to receive proper training.
4. Never work alone while under a vehicle or while repairing or maintaining equipment.
5. Always use proper components in applications for which they are approved.
6. Be sure to assemble components properly.
7. Never use worn-out or damaged components.
8. Always block any raised or moving device that may injure a person working on or under a vehicle.
9. When installing a Hydraulic Reservoir, always wear protective clothing and safety glasses.
10. Owner/Operator should periodically inspect reservoir, mounting brackets, and hardware as a routine maintenance

Rotating Auxiliary Driveshafts

WARNING

- Rotating auxiliary driveshafts are dangerous. You can snag clothes, skin, hair, hands, etc.
- This can cause serious injury or death.
- Do not go under the vehicle when the engine is running.
- Do not work on or near an exposed shaft when the engine is running.
- Shut off the engine before working on the Power Take-Off or driven equipment.
- Exposed rotating driveshafts must be guarded.

Guarding Auxiliary Driveshafts

WARNING

We strongly recommend that a Power Take-Off and a directly mounted pump be used to eliminate the auxiliary driveshaft whenever possible. If an auxiliary driveshaft is used and remains exposed after installation, it is the responsibility of the vehicle designer and P.T.O. installer to install a guard.

 This symbol warns of possible personal injury

Using Set Screws

WARNING

Auxiliary driveshafts may be installed with either recessed or protruding set screws. If you choose a square head set screw, you should be aware that it will protrude above the hub of the yoke and may be a point where clothes, skin, hair, hands, etc. could be snagged. A socket head set screw, which may not protrude above the hub of the yoke, does not permit the same amount of torquing as does a square head set screw. Also a square head set screw, if used with a lock wire, will prevent loosening of the screw caused by vibration. Regardless of the choice made with respect to a set screw, an exposed rotating auxiliary driveshaft must be guarded.

Pump Installation Precalculations

WARNING

Use a bracket to support the pump to the transmission if:

- The pump weighs 40 pounds or more.
- The combined length of the P.T.O. and pump is 18 inches or more from the P.T.O. centerline to the end of the pump.

Increased torsional vibrations found in high torque low R.P.M. engines can lead to premature wear of the mating shafts and is accelerated if the shafts are not lubricated. Each Chelsea P.T.O. that features a female pump shaft will include a packet of lubricant. Apply this to the male end of the pump shaft before installing the pump to the P.T.O.