

# Installation Instructions

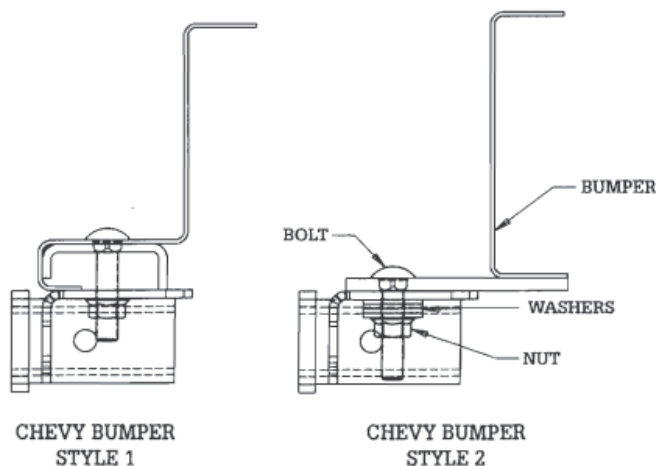
## SBH2 Step Bumper Hitch

### Tools Required:

- 15/16" Socket
- 13/16" Drill
- 1/4" Drill
- Torque Wrench

### Included Hardware:

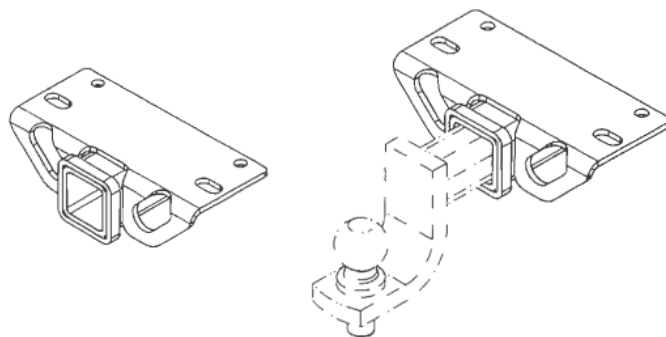
- 2 Carriage Bolts, 5/8-11 x 3.00 GR5 ZN
- 2 Serrated Flange Nuts, 5/8-11 ZN
- 8 Flat Washers, 5/8 USS ZN



Torque all nuts to 85 ft./lb.

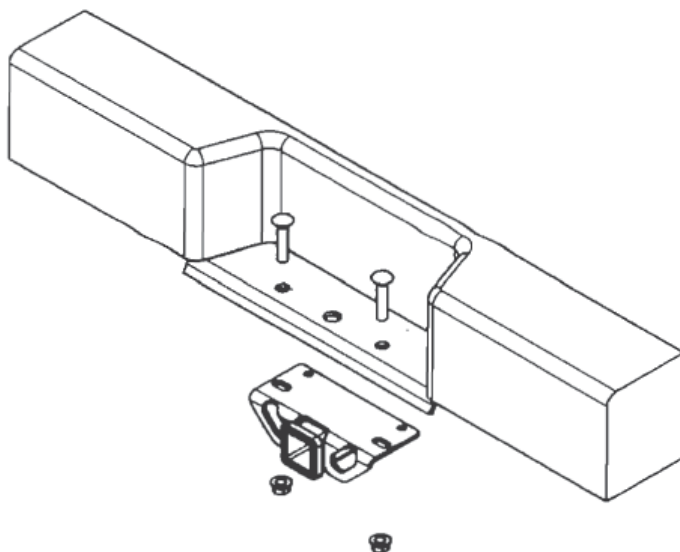
### WARNING

Do not drill or weld to this hitch.



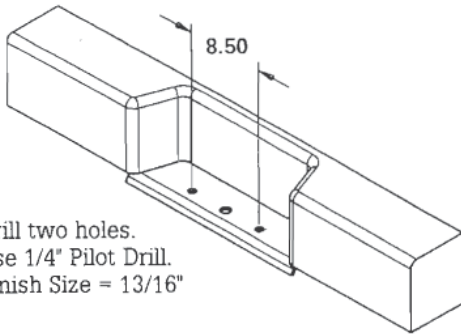
### WARNING

Do not lubricate threads. Bolt failure may occur due to over tightening.

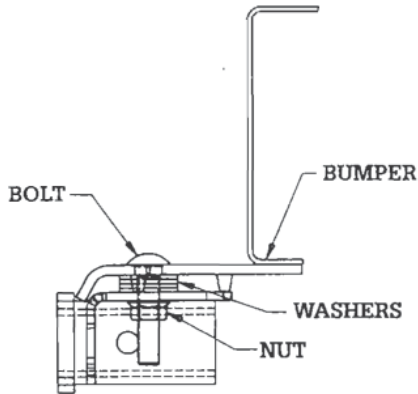
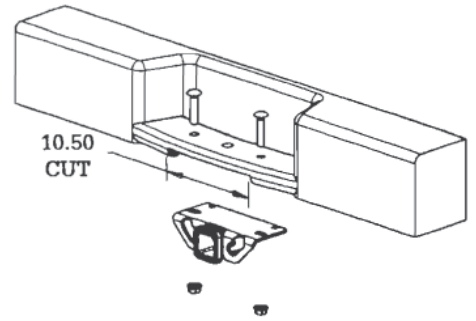
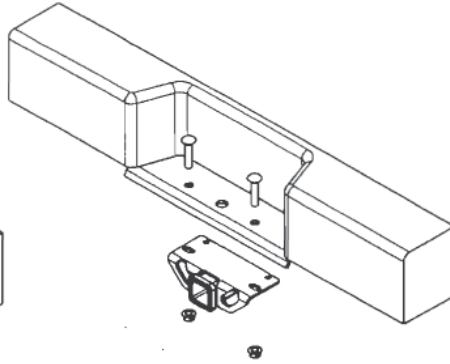


### WARRANTY

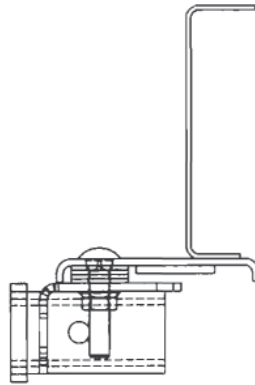
Buyers Products Co. warrants all truck/trailer hardware manufactured or distributed by it, to be free from defects in material and workmanship for a period of one year from date of shipment. Parts must be properly installed and used under normal conditions. Any product which has been altered, including modification, misuse, accident or lack of maintenance will not be considered under warranty. Normal wear is excluded. The sole responsibility of Buyers Products Co. under this warranty is limited to repairing or replacing any part or parts which are returned, prepaid, and are found to be defective by Buyers Products Co. Authorization from Buyers Products Co. must be obtained before returning any part. No charges for transportation or labor performed on Buyers' products will be allowed under this warranty.



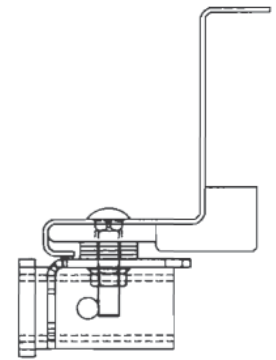
Drill two holes.  
Use 1/4" Pilot Drill.  
Finish Size = 13/16"



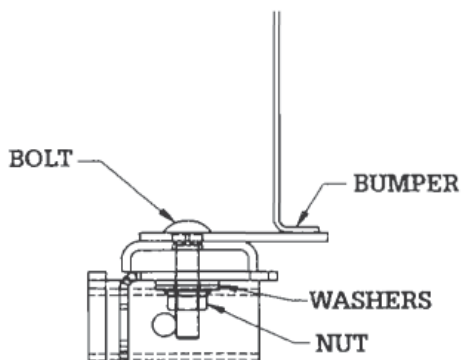
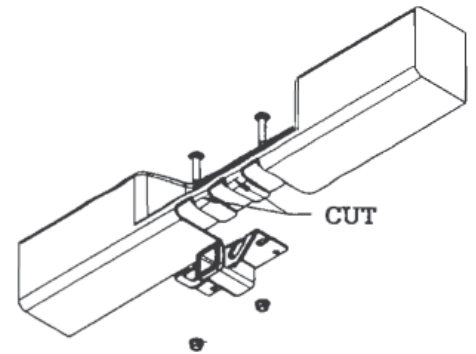
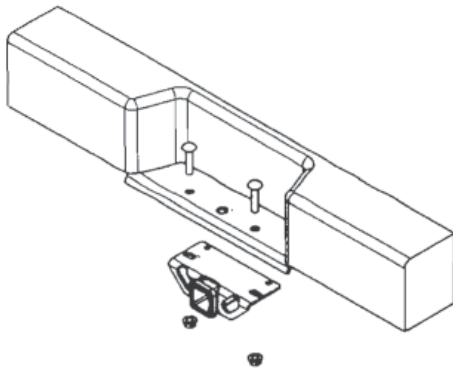
**FORD BUMPER  
STYLE 1**



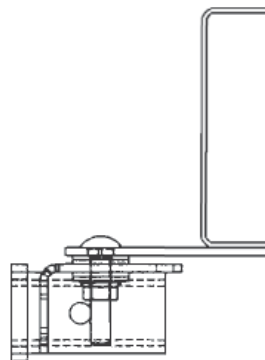
**FORD BUMPER  
STYLE 2**



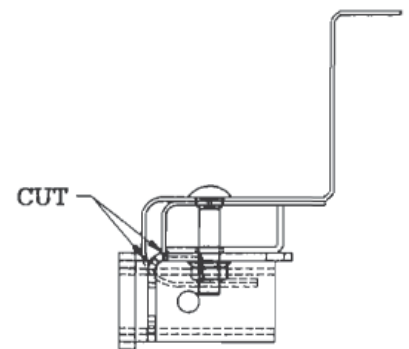
**FORD BUMPER  
STYLE 3**



**DODGE BUMPER  
STYLE 1**



**DODGE BUMPER  
STYLE 2**



**DODGE BUMPER  
STYLE 3**