

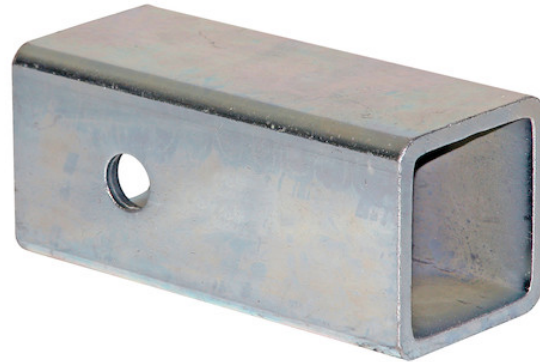


2-1/2 to 2 Inch Receiver Tube Adapter

Buyers Part Number: RTA252

Buyers Products 2-1/2 Inch to 2 Inch Receiver Tube Adapter converts hitch applications.

- Convert from 2-1/2 inch to 2 inch hitch applications.
- Corrosion-resistant zinc plating.
- Will not change towing capacity requirements.
- 5/8 inch hitch pin hole.



Specifications

Color	None	Extension/Length	0.00"
Finish	Zinc Plated Clear	Material	Carbon Steel
Mount Type	Receiver Adapter	Mounting Hole Size	0.656"
Receiver Adapter Converting-to Size	2.00"	Receiver Adapter Starting Size	2.50"
Receiver Size	2.50"	Shipping Weight	3.25 lb