

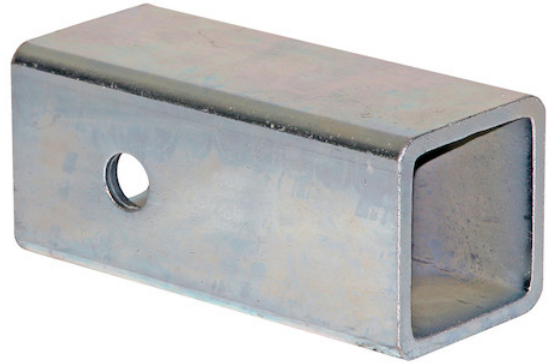


## 2-1/2 to 2 Inch Receiver Tube Adapter

Buyers Part Number: RTA252

Buyers Products 2-1/2 Inch to 2 Inch Receiver Tube Adapter converts hitch applications.

- Convert from 2-1/2 inch to 2 inch hitch applications.
- Corrosion-resistant zinc plating.
- Will not change towing capacity requirements.
- 5/8 inch hitch pin hole.



### Specifications

<b>Color</b>	None	<b>Extension/Length</b>	0.00"
<b>Finish</b>	Zinc Plated Clear	<b>Material</b>	Carbon Steel
<b>Mount Type</b>	Receiver Adapter	<b>Mounting Hole Size</b>	0.656"
<b>Receiver Adapter Converting-to Size</b>	2.00"	<b>Receiver Adapter Starting Size</b>	2.50"
<b>Receiver Size</b>	2.50"	<b>Shipping Weight</b>	3.25 lb