

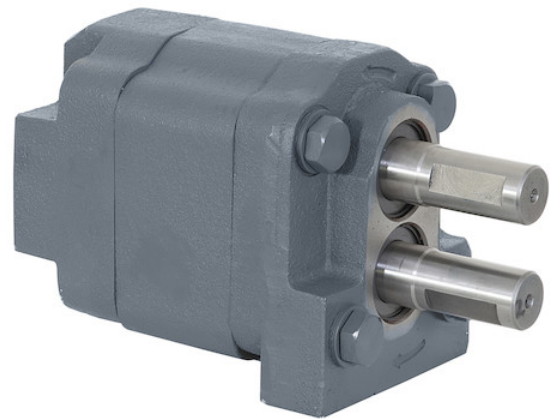


## Dual Shaft Hydraulic Pump With 2 Inch Diameter Gear

**Buyers Part Number:** HDS36205

**Buyers Products Dual Shaft Hydraulic Pump is excellent for powering continuous duty operations such as refuse collection.**

- Dual shaft design is ideal for powering refuse truck operations.
- Tough cast iron construction.
- Can handle continuous-duty maximum operating pressure of 2500 PSI.



### Specifications

<b>Direct Mount/Remote Mount</b>	Pad Mount	<b>Direct or Remote Mount</b>	Remote Mount
<b>Displacement</b>	22 GPM	<b>Displacement</b>	5 in. <sup>3</sup> /r
<b>Flow at 1000 RPM</b>	22.3 GPM	<b>Flow at 1200 RPM</b>	24.0 GPM
<b>Flow at 1500 RPM</b>	30.5 GPM	<b>Flow at 1800 RPM</b>	37.0 GPM
<b>Gear Size</b>	2.000"	<b>Gear Width</b>	2.000"
<b>Inlet Port Size</b>	1 1/4 NPT	<b>Input Mount Type</b>	Integral Bracket
<b>Material</b>	Cast Iron	<b>Maximum Pressure</b>	2500 PSI
<b>Mount Type</b>	Frame Mount	<b>Outlet Port Size</b>	3/4 SAE ORB (-12)
<b>Ports (rear/side)</b>	Rear	<b>Rear Port Size</b>	3/4 SAE ORB (-12)
<b>Rotation</b>	Clockwise or Counterclockwise	<b>Shaft Size</b>	1.125

## Specifications continued:

<b>Shaft Type</b>	Round/Keyed	<b>Suction Port Size</b>	1 1/2 NPT
<b>Shipping Weight</b>	47 lb		