

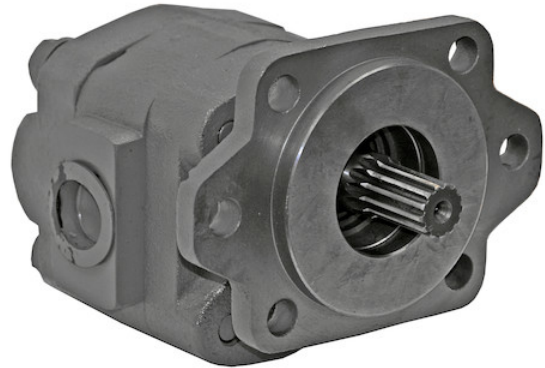


Hydraulic Gear Pump With 7/8-13 Spline Shaft And 2-1/2 Inch Diameter Gear

Buyers Part Number: H5036251

Buyers Products H50 Series Hydraulic Gear Pump With Spline Shaft is a sturdy, heavy duty bi-rotational pump that can be 2- or 4-bolt mounted.

- Built tough of cast iron with teflon-coated bronze thrustplates.
- Structural integrity supported by four internal dowels and a shaft bearing.
- High-pressure rated.



Specifications

Direct Mount/Remote Mount	2/4 Bolt SAE B	Direct or Remote Mount	Direct Mount
Displacement	27 GPM	Displacement	6 in. ³ /r
Flow at 1000 RPM	27 GPM	Flow at 1200 RPM	32.4 GPM
Flow at 1500 RPM	40.50 GPM	Flow at 1800 RPM	48.60 GPM
Flow at 2100 RPM	56.70 GPM	Flow at 600 RPM	16.20 GPM
Flow at 900 RPM	24.30 GPM	Gear Size	2.50"
Gear Width	2.500"	Inlet Port Size	1 1/2 NPT
Input Mount Type	Integral Bracket	Material	Cast Iron
Maximum Pressure	2500 PSI	Mount Type	SAE B 2/4 Bolt
Outlet Port Size	1 1/4 NPT	Pilot Diameter	4.00"
Ports (rear/side)	Rear/Side	Rear Port Size	1 1/4 NPT
Rotation	Bi-Directional	Shaft Size	7/8-13
Shaft Type	Splined	Shipping Weight	53.37 lb