

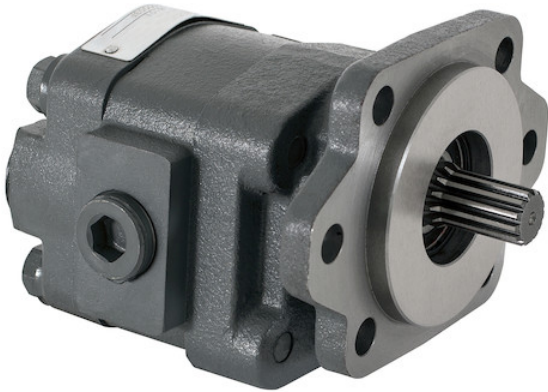


Hydraulic Gear Pump With 7/8-13 Spline Shaft And 1 Inch Diameter Gear

Buyers Part Number: H2136101

Buyers Products H21 Series Hydraulic Gear Pump with Spine Shaft is a sturdy, durable bi-rotational pump that can be 2- or 4-bolt mounted.

- Built tough of cast iron with teflon-coated bronze thrustplates.
- Structural integrity supported by four internal dowels and a shaft bearing.
- High-pressure rated -- can take a maximum 2500 or 3000 PSI.



Specifications

Direct Mount/Remote Mount	2/4 Bolt SAE B	Direct or Remote Mount	Direct Mount
Displacement	2 in. ³ /r	Displacement	6 GPM
Flow at 1000 RPM	6.8 GPM	Flow at 1200 RPM	8.16 GPM
Flow at 1500 RPM	10.2 GPM	Flow at 1800 RPM	12.24 GPM
Flow at 2100 RPM	14.28 GPM	Flow at 600 RPM	4.08 GPM
Flow at 900 RPM	6.12 GPM	Gear Size	1.00"
Gear Width	1.000"	Input Mount Type	Integral Bracket
Material	Cast Iron	Maximum Pressure	3000 PSI
Maximum Rotations Per Minute (RPM)	2000 RPM	Mount Type	SAE B 2/4 Bolt
Outlet Port Size	1 NPT	Pilot Diameter	4.00"
Ports (rear/side)	Rear/Side	Rear Port Size	1 NPT

Specifications continued:

Rotation	Bi-Directional	Shaft Size	7/8-13
Shaft Type	Splined	Suction Port Size	1 NPT
Shipping Weight	29.92 lb		